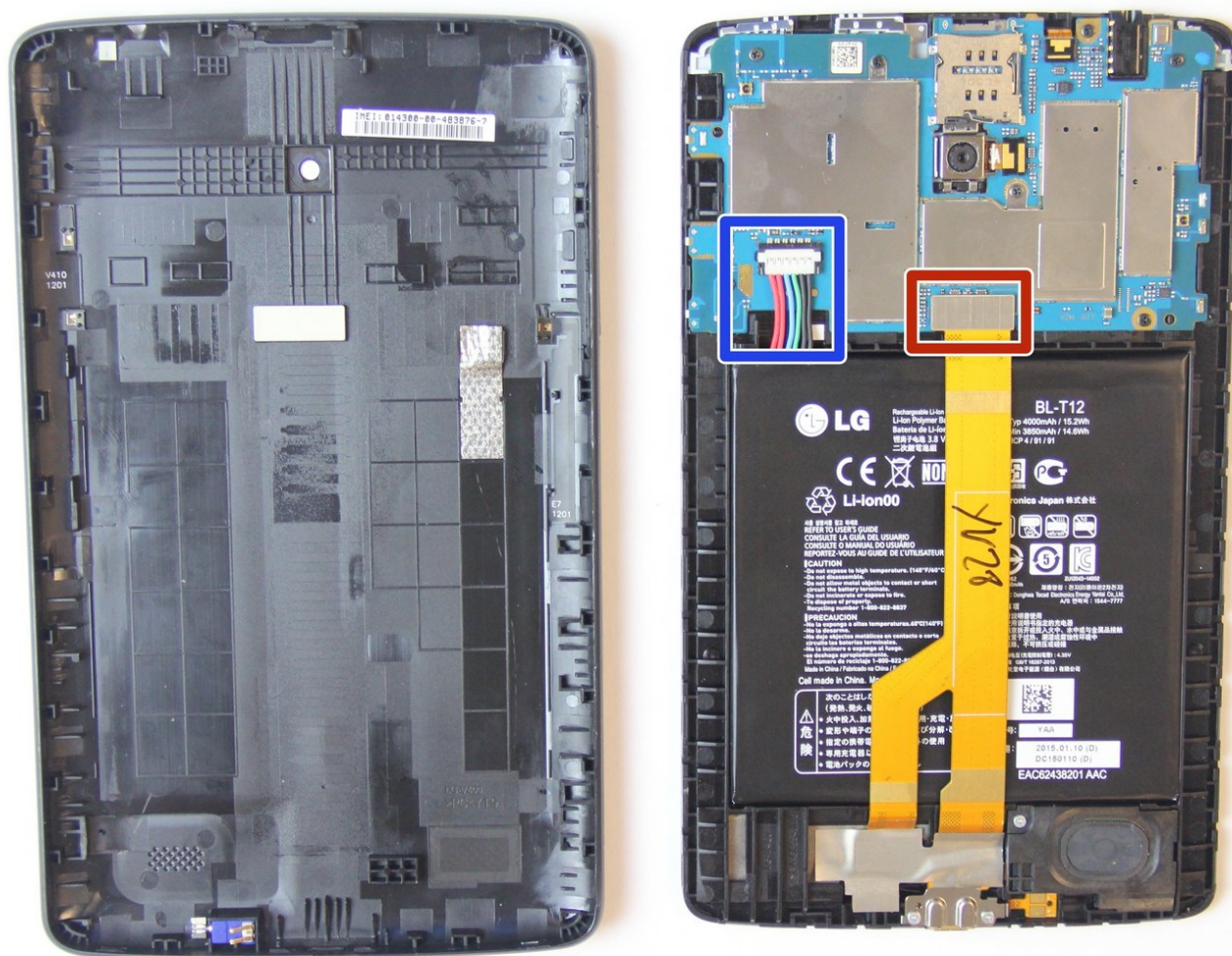




# LG G Pad 7.0 LTE Battery Replacement

This guide will help you replace the battery on your LG G Pad 7.0 for both the LTE and non-LTE versions.

Written By: Fadi Bitar



# INTRODUCTION

In cases where the battery is not charging or the device isn't powering on, this guide will help you replace the battery to fix these issues.

---


## TOOLS:

- [Phillips PH000 Screwdriver](#) (1)
  - [iFixit Opening Tools](#) (1)
  - [Tweezers](#) (1)
  - [Anti-Static Wrist Strap](#) (1)
-

## Step 1 — Removing the Back Cover






- Power off your device before beginning the battery replacement (hold the button with the red marker until the device prompts you to power it off, then tap "Power Off").

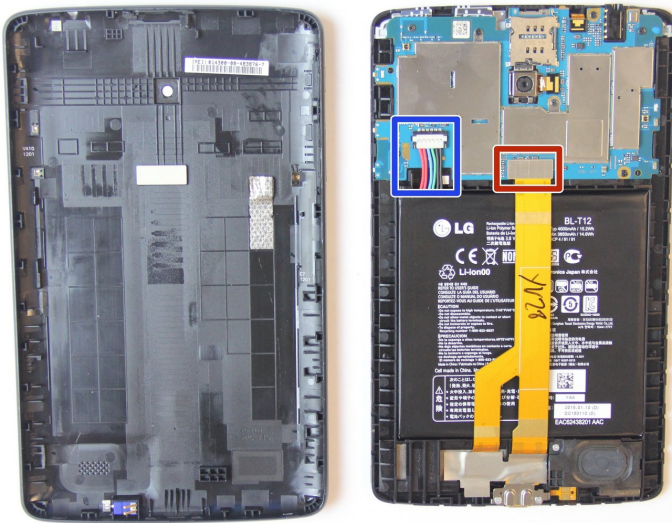
 Be wary of the front screen and SIM Card while tearing down the device.

## Step 2



-  Put on an Anti-Static Wrist Strap to prevent damage to sensitive electrical components (optional).
  - To separate the frame from the cover, pry between the screen and the cover using a plastic prying tool.
-  Begin at the top left of the device to avoid damaging the motherboard and work your way around the perimeter of the screen.
-  When you pry your device open, be wary of the volume rockers, motherboard, and camera. These components are delicate and can be sensitive to static electricity.

## Step 3 — Battery



- Disconnect the battery connector by prying it upwards (blue marker).
  - Remove the ribbon cable by prying it upwards (red marker).
- ⚠ Do not bend the cable or connector as they are fragile.

## Step 4



- There is a light adhesive holding the battery in the frame of the device. Gently pry the bottom the battery using a plastic pry tool.
- ⚠ Be careful not to bend the battery as this may damage it.

To reassemble your device, follow these instructions in reverse order.