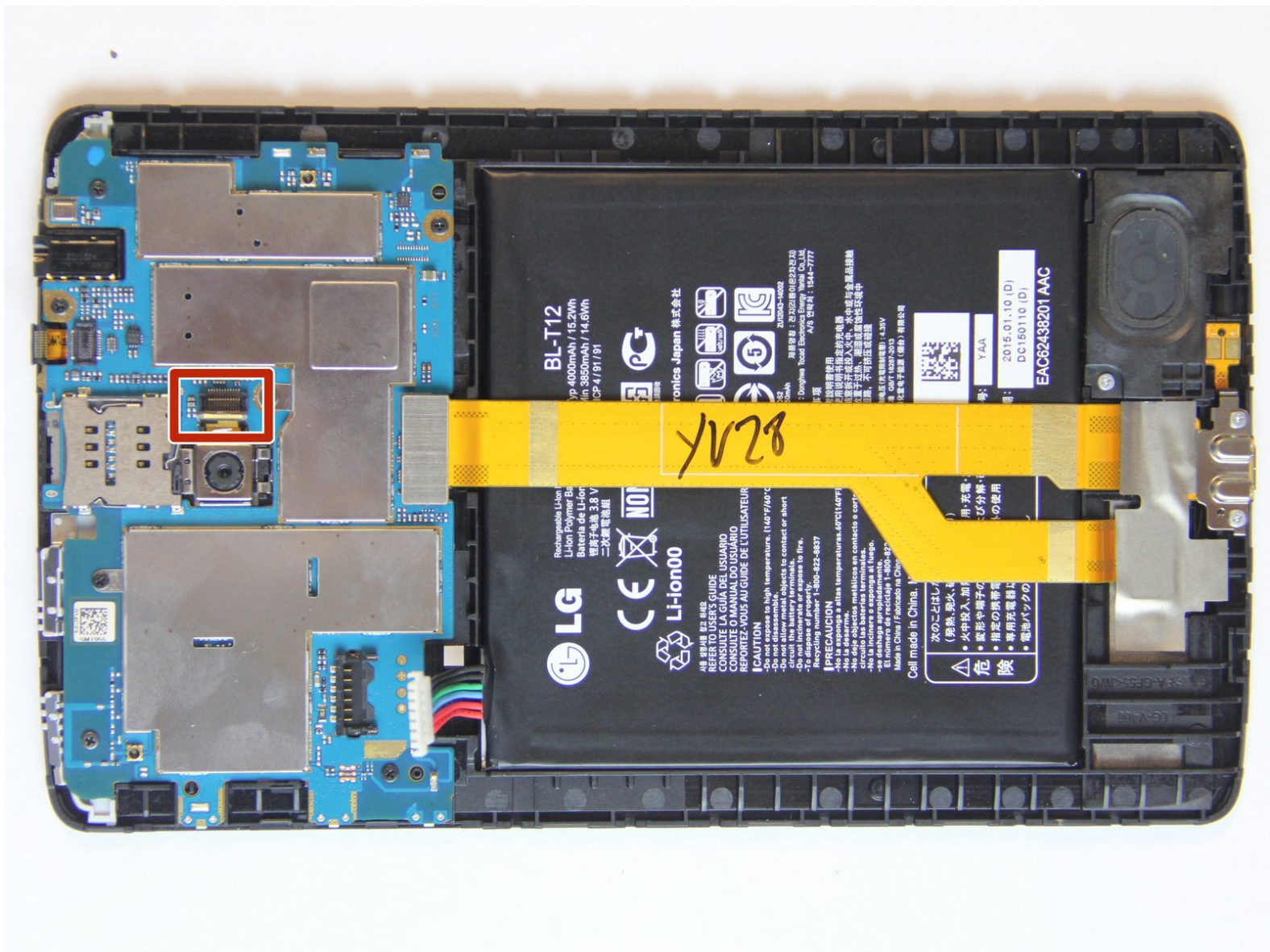




LG G Pad 7.0 LTE Camera Replacement

This guide will help you replace the Camera on your LG G Pad 7.0 for both the LTE and non-LTE versions.

Written By: Fadi Bitar






TOOLS:

- [Phillips PH000 Screwdriver](#) (1)
 - [iFixit Opening Tools](#) (1)
 - [Tweezers](#) (1)
 - [Anti-Static Wrist Strap](#) (1)
-

Step 1 — Removing the Back Cover




- Power off your device before beginning the battery replacement (hold the button with the red marker until the device prompts you to power it off, then tap "Power Off").


 Be wary of the front screen and SIM Card while tearing down the device.


Step 2



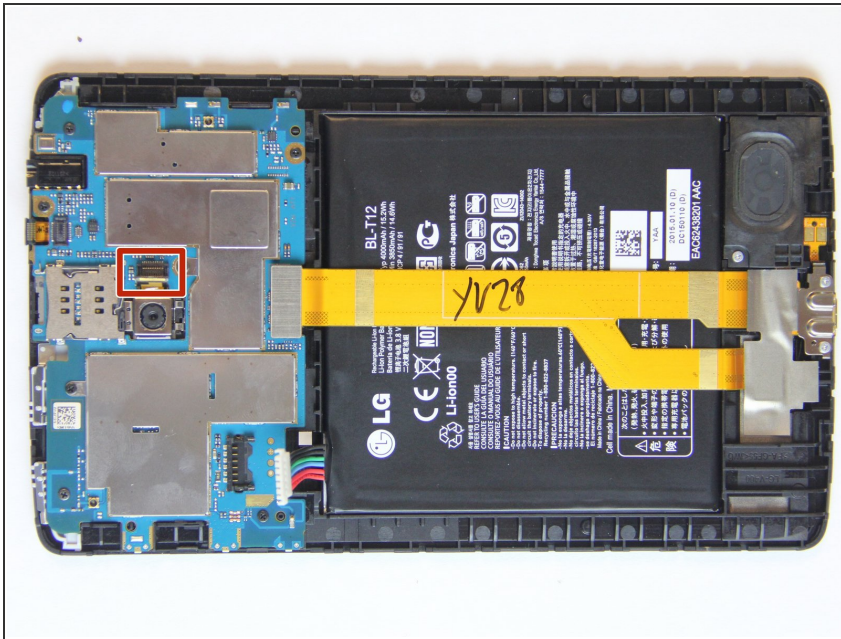
 Put on an Anti-Static Wrist Strap to prevent damage to sensitive electrical components (optional).

- To separate the frame from the cover, pry between the screen and the cover using a plastic prying tool.

 Begin at the top left of the device to avoid damaging the motherboard and work your way around the perimeter of the screen.

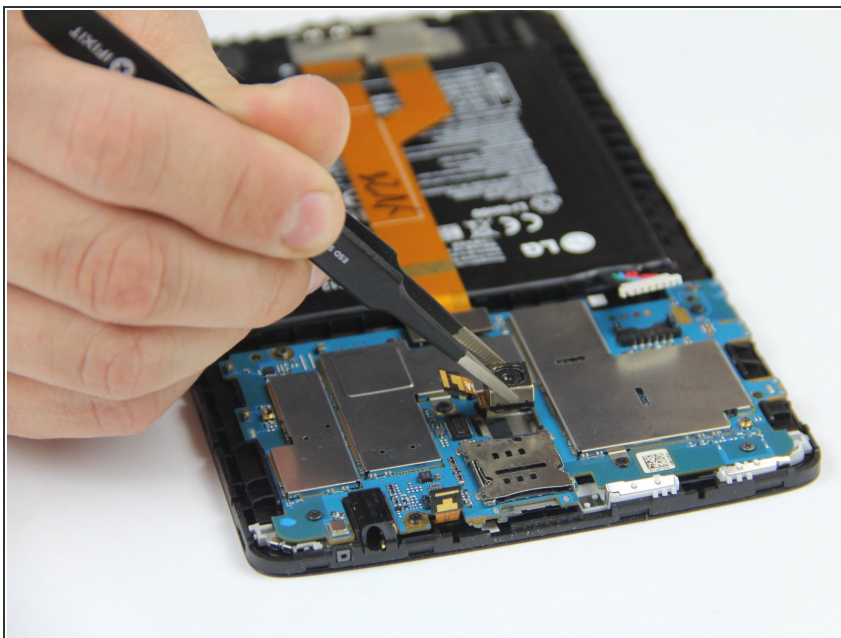
 When you pry your device open, be wary of the volume rockers, motherboard, and camera. These components are delicate and can be sensitive to static electricity.

Step 3 — Camera



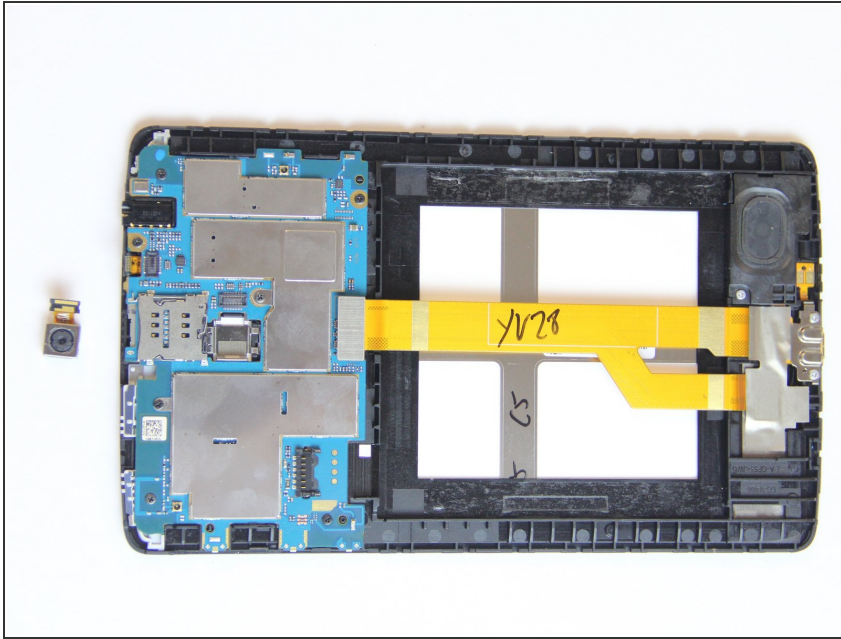
- Disconnect camera ribbon cable by prying up on it with a plastic pry tool.

Step 4



- ⚠ There is a light adhesive holding the camera in the device.
- Using tweezers or a small plastic pry tool gently pull or pry the camera out of the device (red marker).

Step 5



- Install the new camera into device by gently placing it in its corresponding place until it pops in.

To reassemble your device, follow these instructions in reverse order.