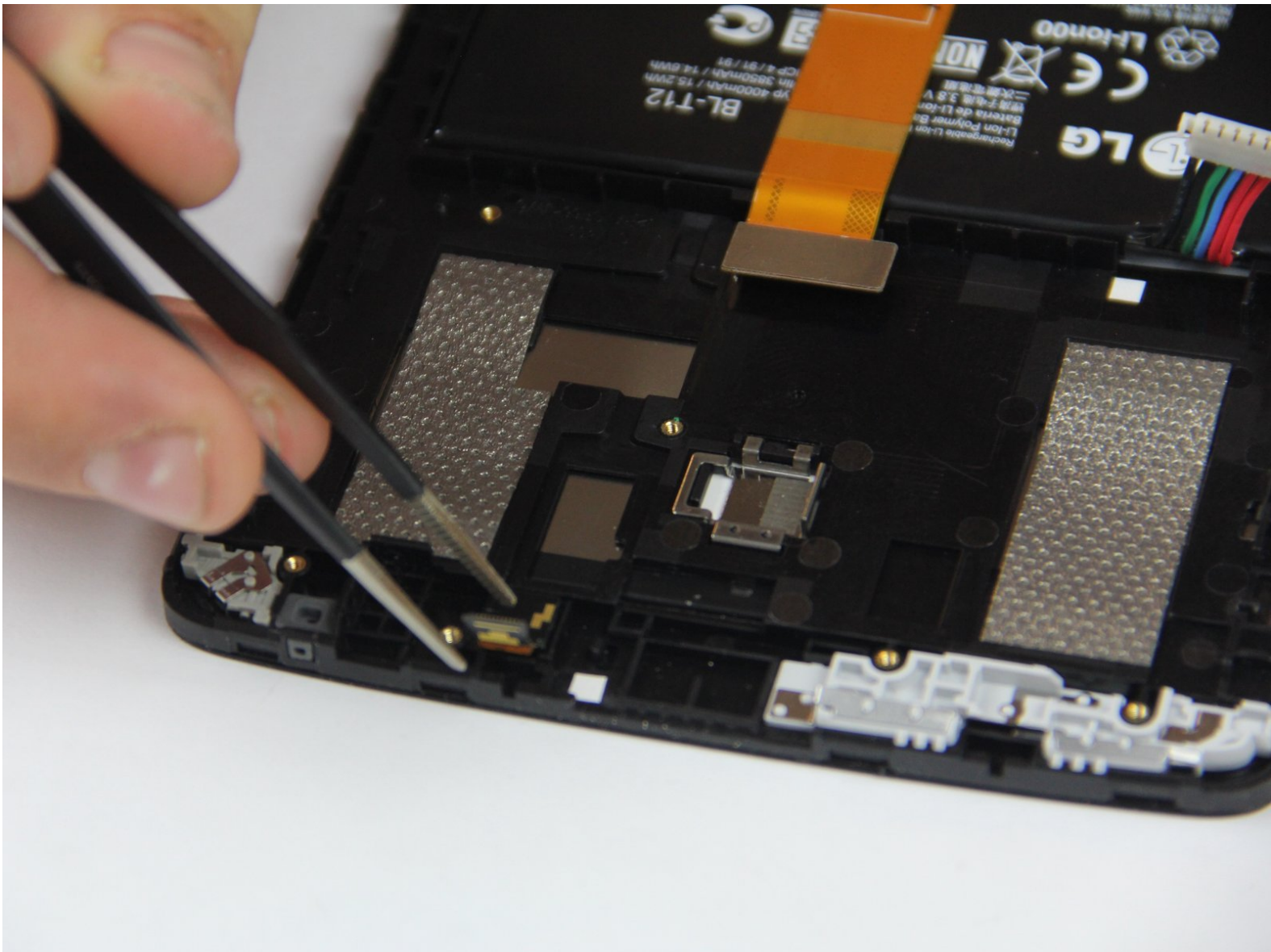




LG G Pad 7.0 LTE Front Facing Camera Replacement

This guide will help you replace the front facing camera on your device for both the LTE and non-LTE versions.

Written By: Fadi Bitar



INTRODUCTION

In cases where the front facing camera is not responding or isn't powering on, this guide will help you replace the camera to fix these issues.


TOOLS:

- [Phillips PH000 Screwdriver](#) (1)
 - [iFixit Opening Tools](#) (1)
 - [Tweezers](#) (1)
 - [Anti-Static Wrist Strap](#) (1)
-

Step 1 — Removing the Back Cover




- Power off your device before beginning the battery replacement (hold the button with the red marker until the device prompts you to power it off, then tap "Power Off").


 Be wary of the front screen and SIM Card while tearing down the device.


Step 2



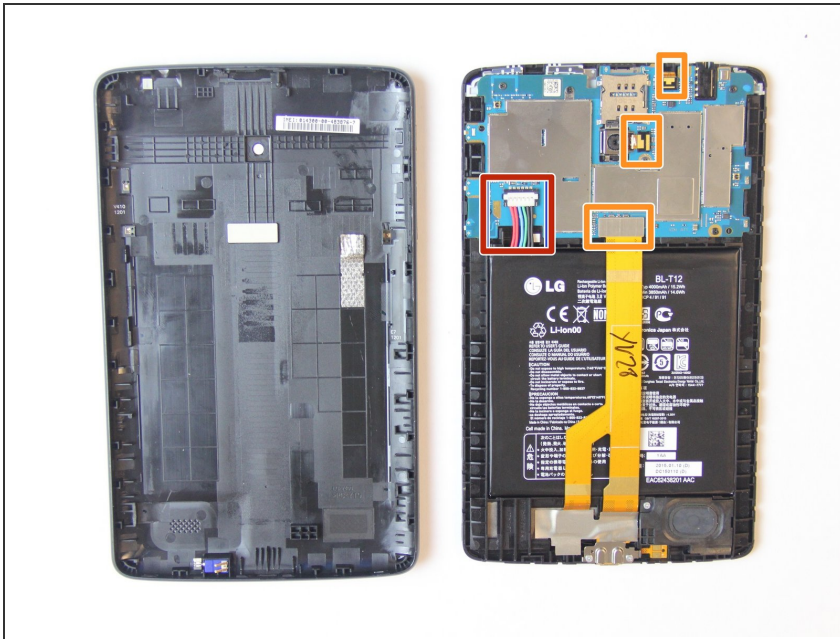
 Put on an Anti-Static Wrist Strap to prevent damage to sensitive electrical components (optional).

- To separate the frame from the cover, pry between the screen and the cover using a plastic prying tool.

 Begin at the top left of the device to avoid damaging the motherboard and work your way around the perimeter of the screen.

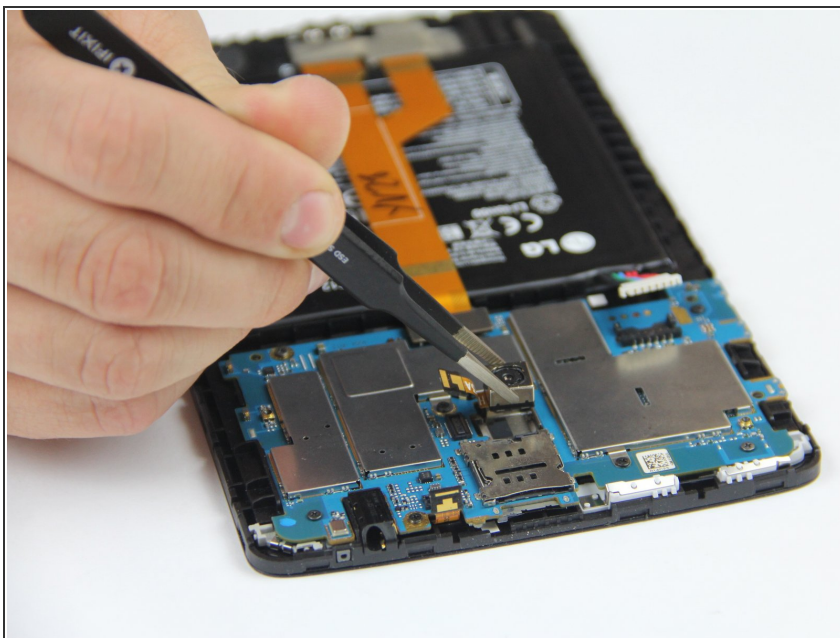
 When you pry your device open, be wary of the volume rockers, motherboard, and camera. These components are delicate and can be sensitive to static electricity.

Step 3 — Motherboard



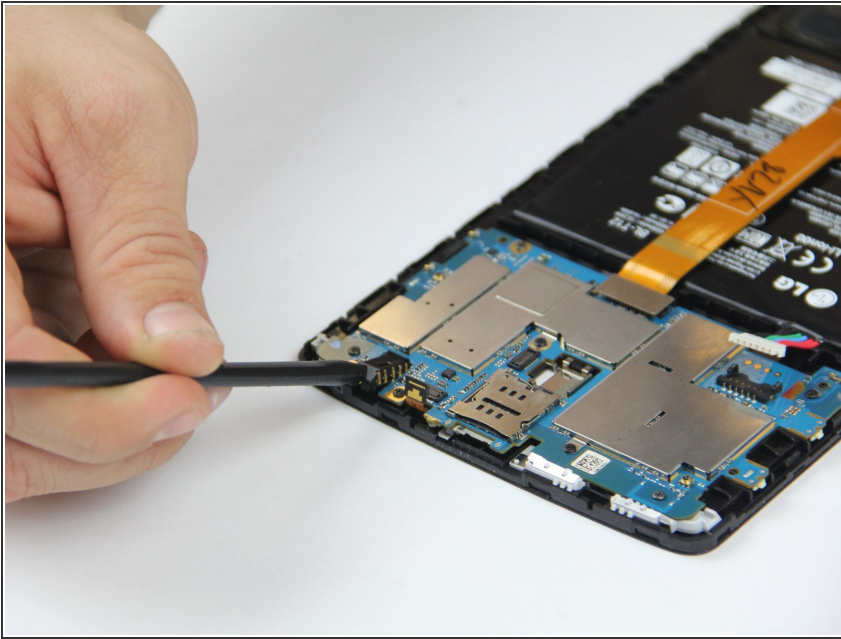
- Disconnect the battery connector by prying it upwards (red marker).
- ⚠ Be careful not to damage it while doing so.
- Remove the ribbon cables by prying them upwards with a plastic pry tool).
- ⚠ Do not bend the cable or connector as they are fragile.

Step 4



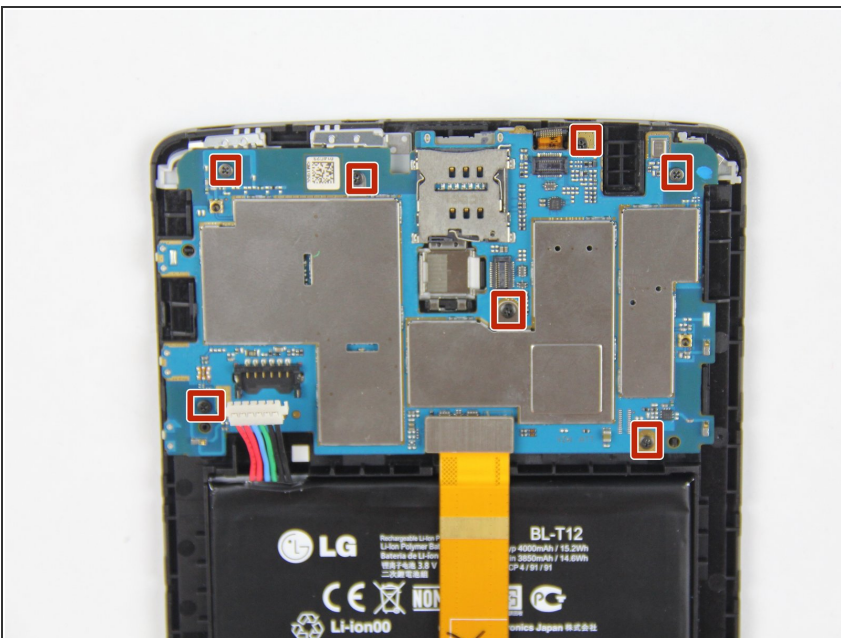
- ⚠ There is a light adhesive holding the camera in the device.
- Using tweezers or a small plastic pry tool gently pull or pry the camera out of the device.

Step 5



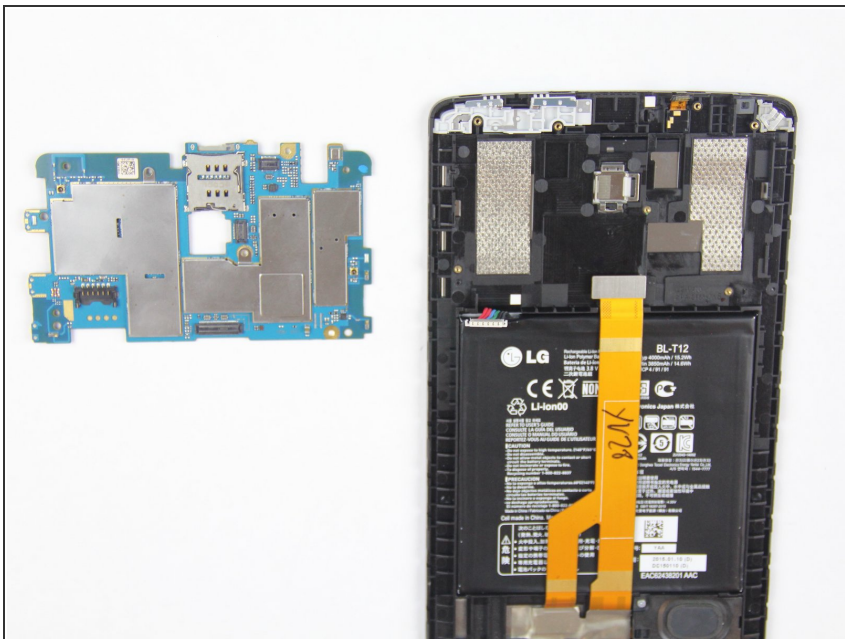
- Pry the audio jack from the device using a spudger.

Step 6



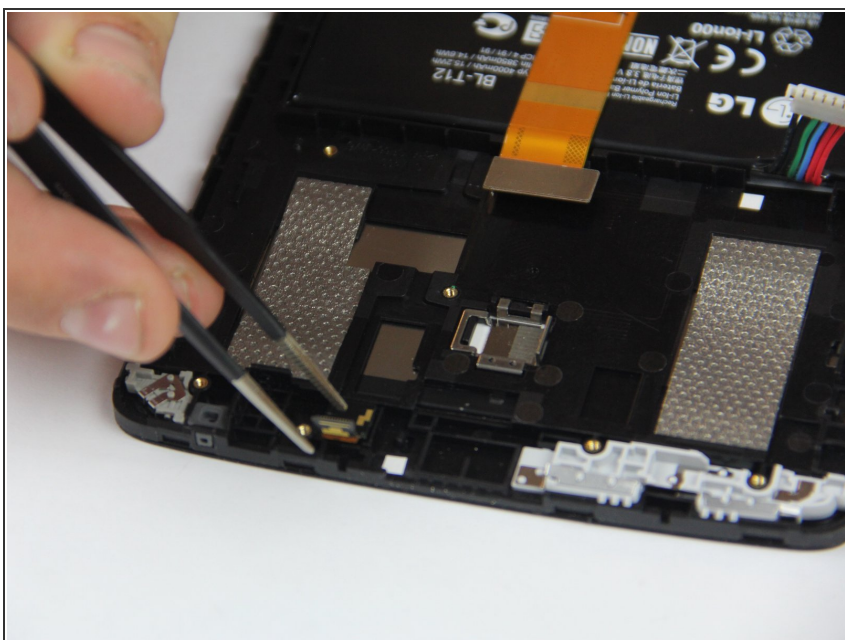
- Remove the 7 Black 3mm PH0 screws from the motherboard (red markers).

Step 7



- Remove the Motherboard.

Step 8 — Front Facing Camera



- Gently pull up on the camera to remove it.
- ⚠ There is a light adhesive holding the camera in the device

To reassemble your device, follow these instructions in reverse order.