



LG G Pad 8.3 4G Battery Replacement

How to replace a LG G Pad 8.3 4G battery.

Written By: Charlie Castorena






TOOLS:

- [Spudger](#) (1)
-

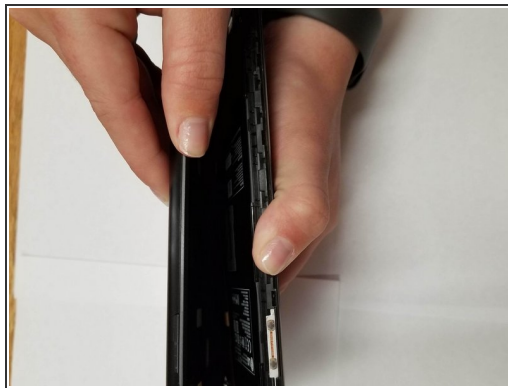
Step 1 — Back Panel




- With the screen faced up, insert the metal spudger into the crevice so that it is sticking out between the side panel and the screen.

 Be gentle when popping the panel off.

Step 2



- Take the spudger and slide it around the perimeter of the device.
- Pull gently on the edges to get the panel to pop up.

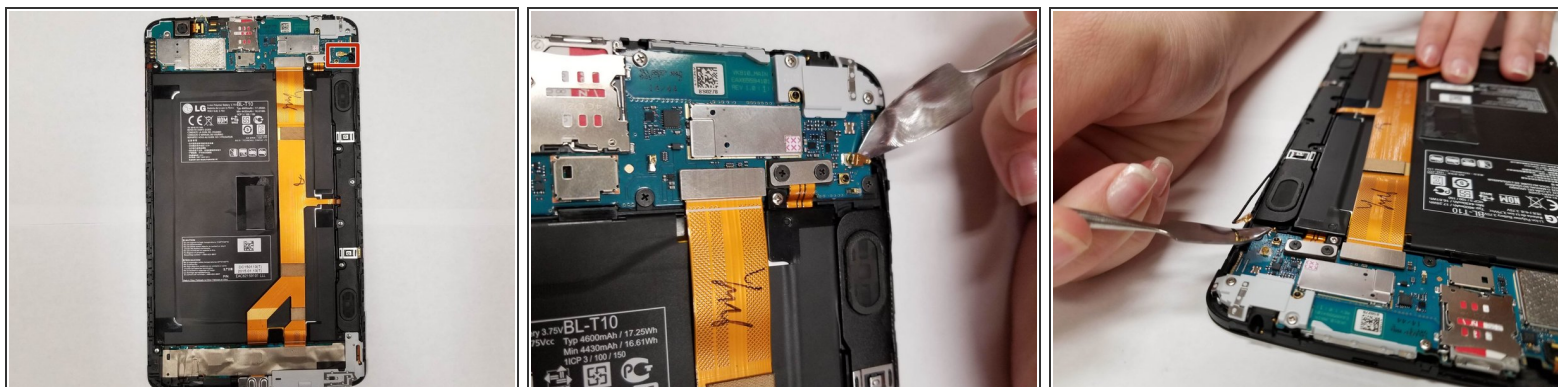
 If the panel does not budge, be aware that there is adhesive on the back of the battery holding the back shut. Make sure to just move around the perimeter of the back panel until the panel is able to lift forward.

Step 3 — Speakers



- Remove the 4 1.5 mm screws holding the speakers in place.

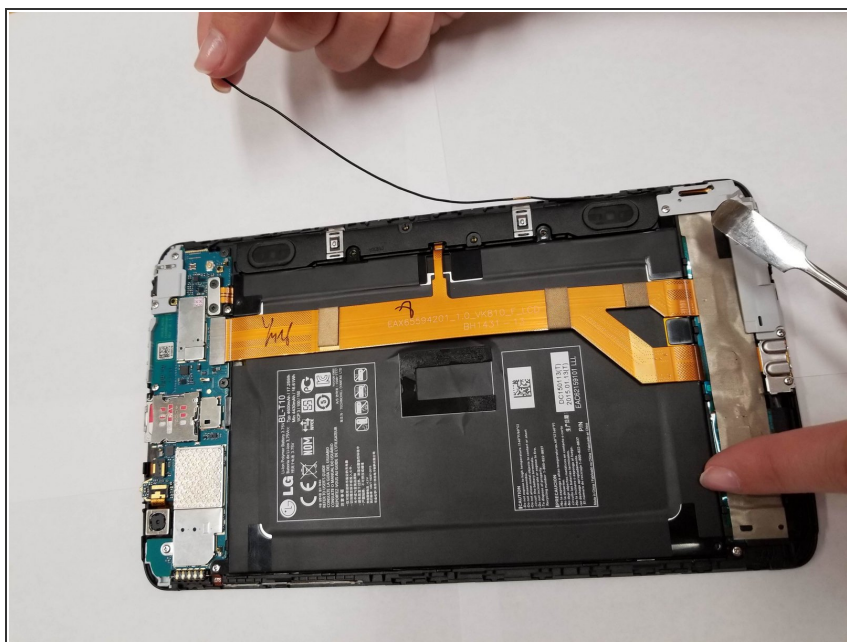
Step 4



- Put the spudger underneath the gold cap of the cable and lift to disconnect from device.

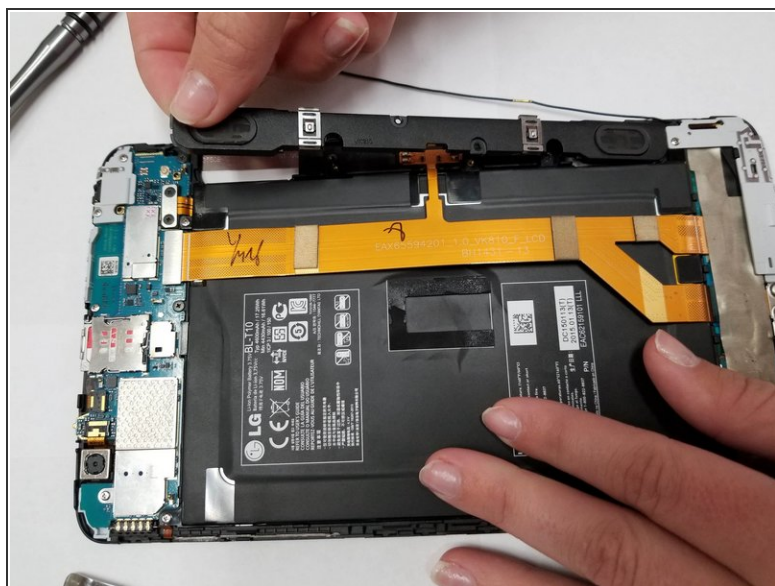
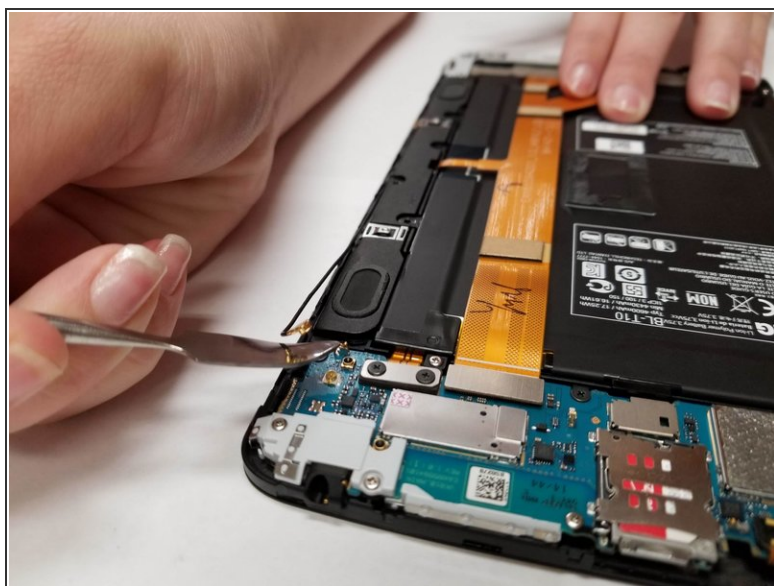
⚠ This cable can be damaged easily.

Step 5



- Pull the cable back and out of the way of the speaker.

Step 6



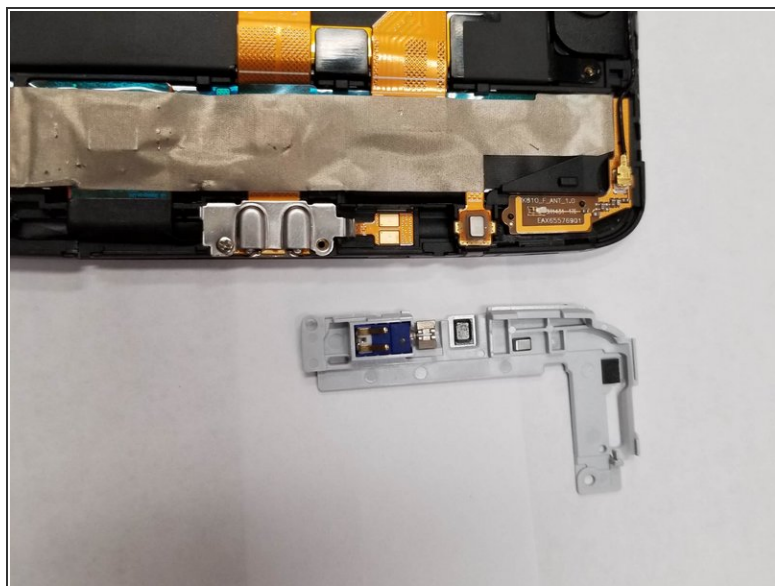
- Place the spudger in between the speaker and the device to pop the speaker out of place.
- Pull the speaker out of the device.

Step 7 — Vibrator



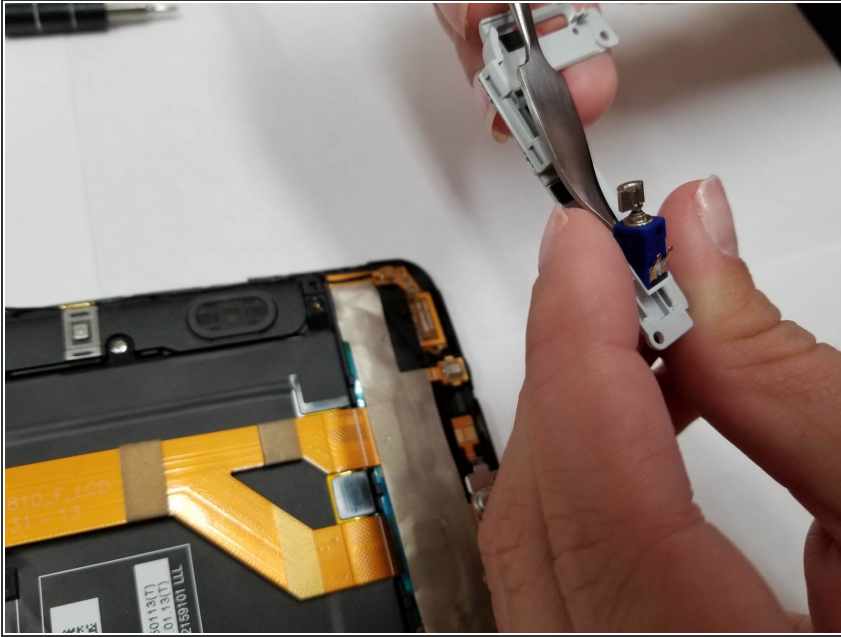
- Remove the two screws on the white panel on the bottom right side.

Step 8



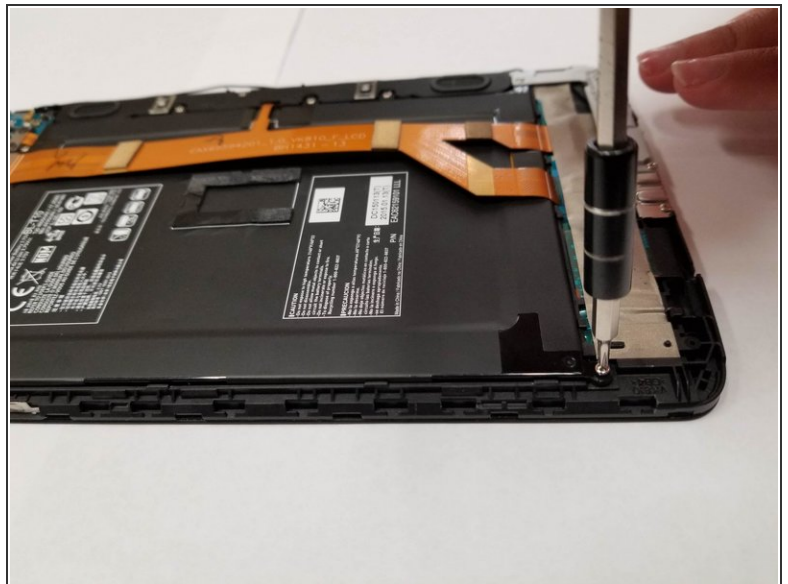
- Remove the white panel.

Step 9



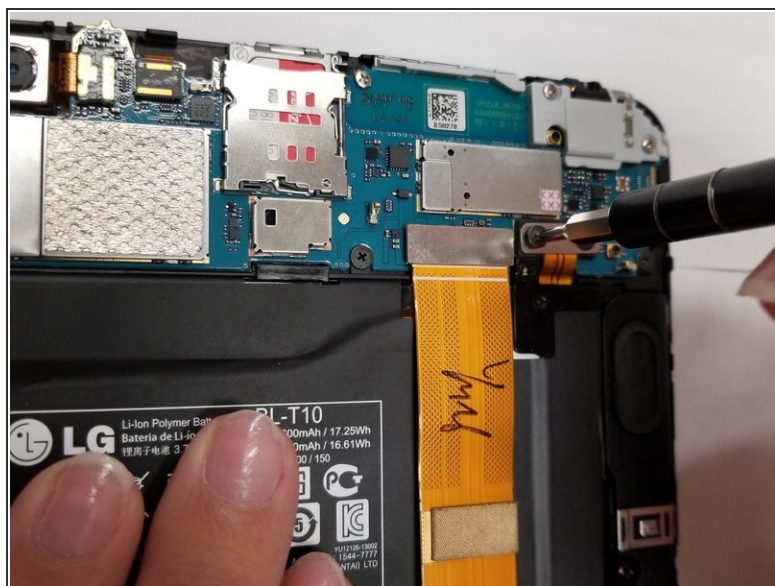
- Remove the vibrator from the underside of the white panel.

Step 10 — Battery



- Remove the 3 silver 1.5 mm screws that remain.

Step 11



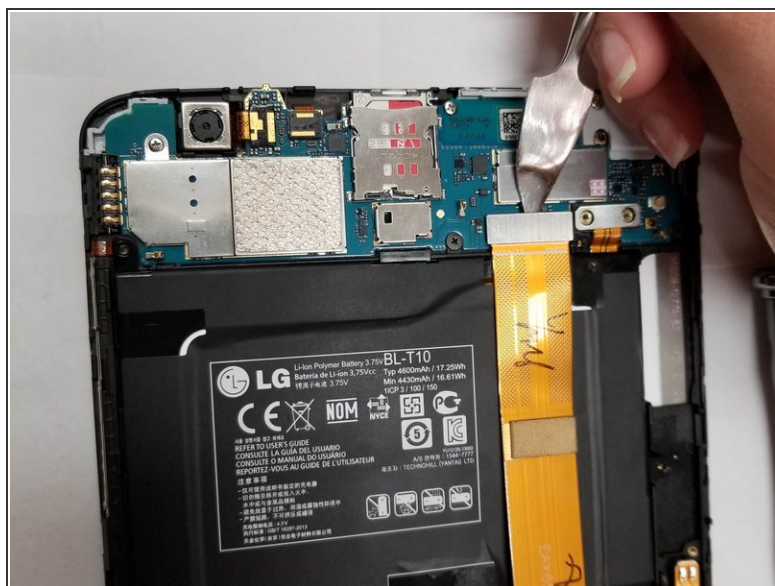
- Remove the 2 black 1.5 mm screws.

Step 12



- Insert metal spudger under the side of the gold strip and pull.

Step 13



- Place spudger under the top of the gold bar and gently pry up.

Step 14



- Pull on top of the silver block until gold bar lifts.

Step 15



- Place spudger under the battery and run it around the edge to loosen it.

Step 16



- Pull the battery out.

To reassemble your device, follow these instructions in reverse order.