



# LG G Pad 8.3 Back Panel Replacement

This guide will teach you how to remove the LG G Pad 8.3 back panel.

Written By: Raenicia Haworth



## INTRODUCTION

If you need to replace a component inside the LG G Pad 8.3, you will need to remove the back panel. This guide will teach you how to remove the back panel.

---

### TOOLS:

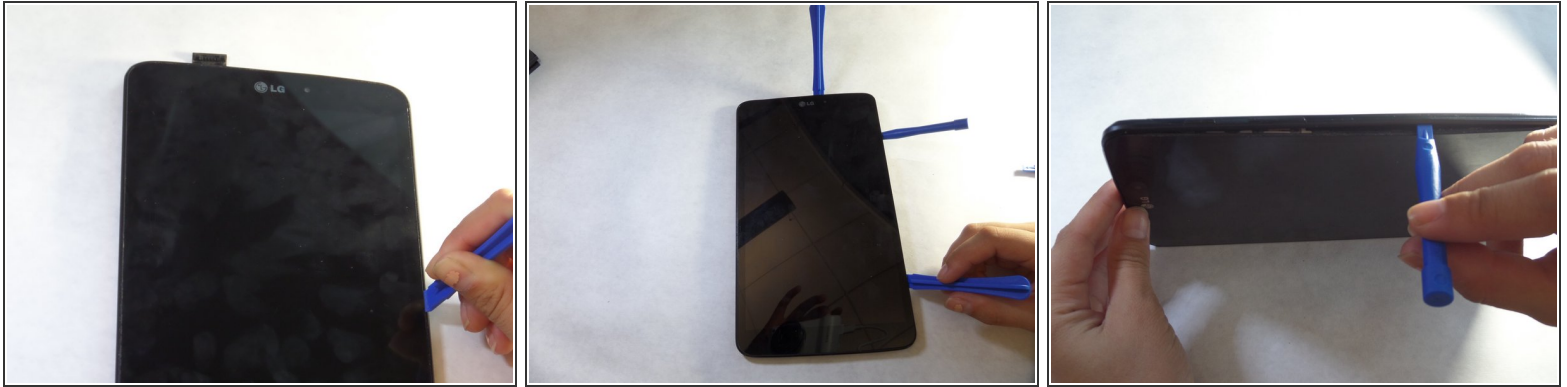
- [iFixit Opening Tools](#) (1)
  - [Phillips #000 Screwdriver](#) (1)
  - [iOpener Kit](#) (1)
-

## Step 1 — Back Panel



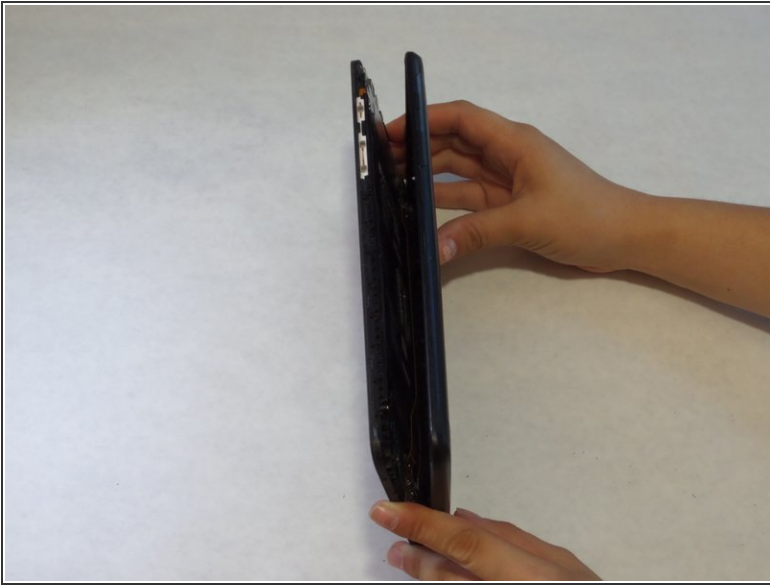
- With the tablet face down, pull the SD card slot cover out.
- Using a Phillips #000 screwdriver, remove the 3mm screw located in the SD card slot.

## Step 2



- Insert a plastic opening tool in the small crevasse between the screen and the back panel.
  - Pry the screen away from the back panel.
  - Repeat this on each edge of the device.
- i** We found it helpful to leave multiple plastic opening tools wedged in the crevasse to prevent it from closing.
- i** This requires heavy force. The back of the device is attached with an adhesive. If the back panel is too hard to remove, use the [iOpener](#).

## Step 3



- After using the plastic opening tools, pry the device open with your hands.
- Remove the back panel from the screen.

To reassemble your device, follow these instructions in reverse order.