



# LG G Pad 8.3 Front Facing Camera Replacement

This guide will show you how to replace the front facing camera.

Written By: Mario Salguero



---

## INTRODUCTION

If your front facing camera is not working properly, it may be time to replace it. This guide will show you how to replace the front facing camera.

---

### TOOLS:

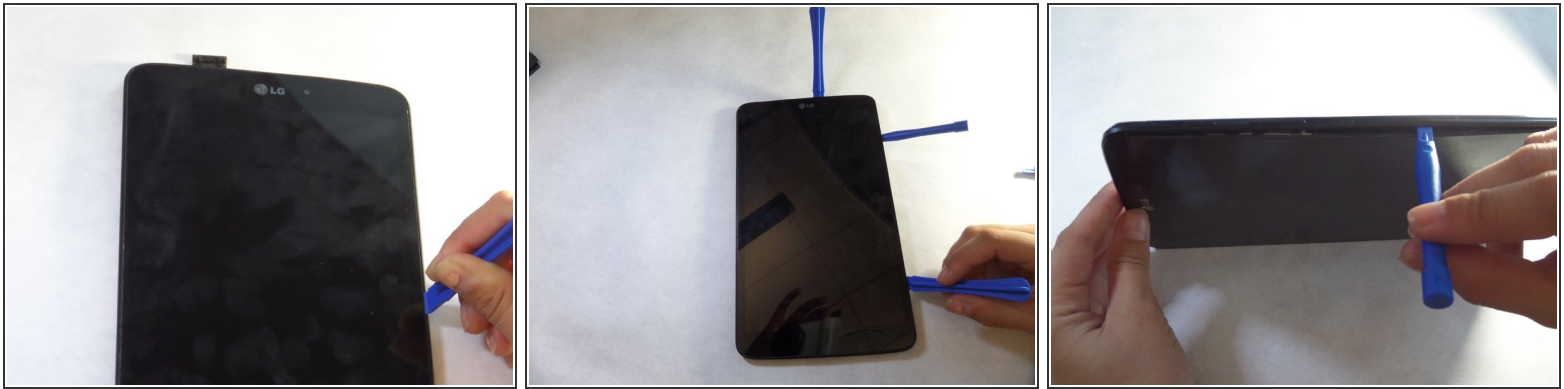
- [iFixit Opening Tools](#) (1)
  - [Phillips #000 Screwdriver](#) (1)
  - [Spudger](#) (1)
-

## Step 1 — Back Panel



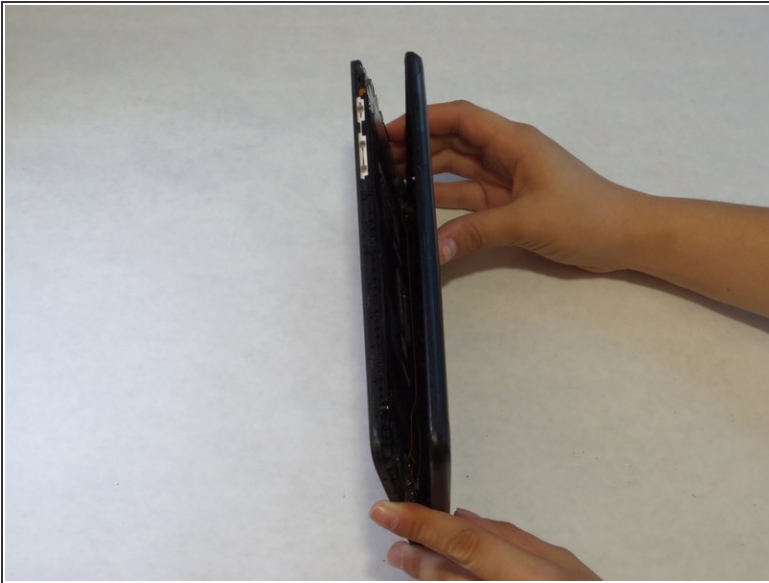
- With the tablet face down, pull the SD card slot cover out.
- Using a Phillips #000 screwdriver, remove the 3mm screw located in the SD card slot.

## Step 2



- Insert a plastic opening tool in the small crevasse between the screen and the back panel.
  - Pry the screen away from the back panel.
  - Repeat this on each edge of the device.
- i** We found it helpful to leave multiple plastic opening tools wedged in the crevasse to prevent it from closing.
- i** This requires heavy force. The back of the device is attached with an adhesive. If the back panel is too hard to remove, use the [iOpener](#).

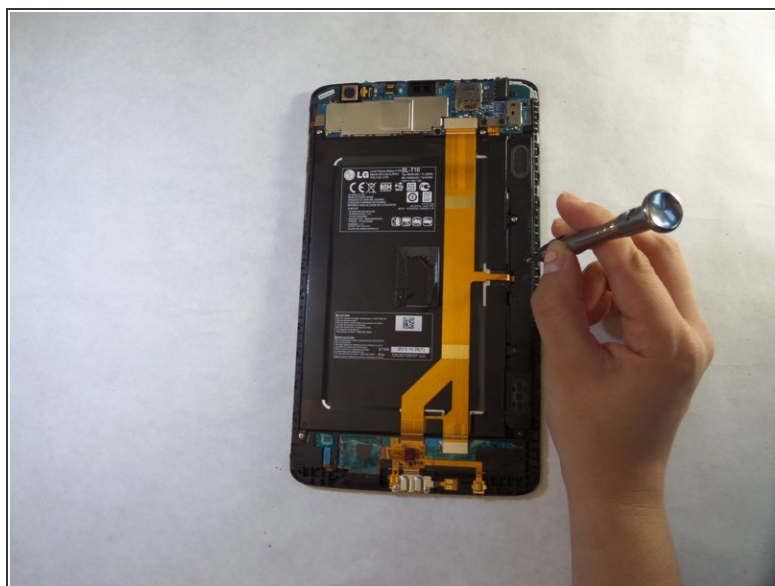
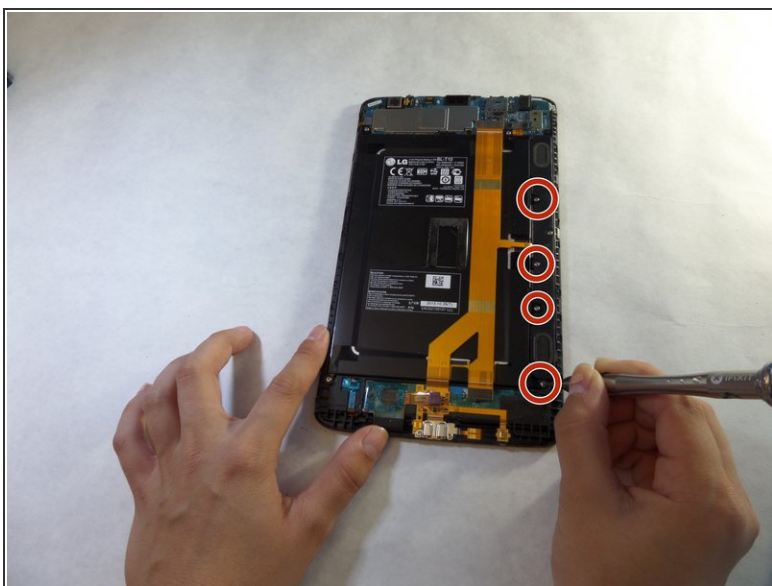
## Step 3



- After using the plastic opening tools, pry the device open with your hands.
- Remove the back panel from the screen.



## Step 4 — Speaker



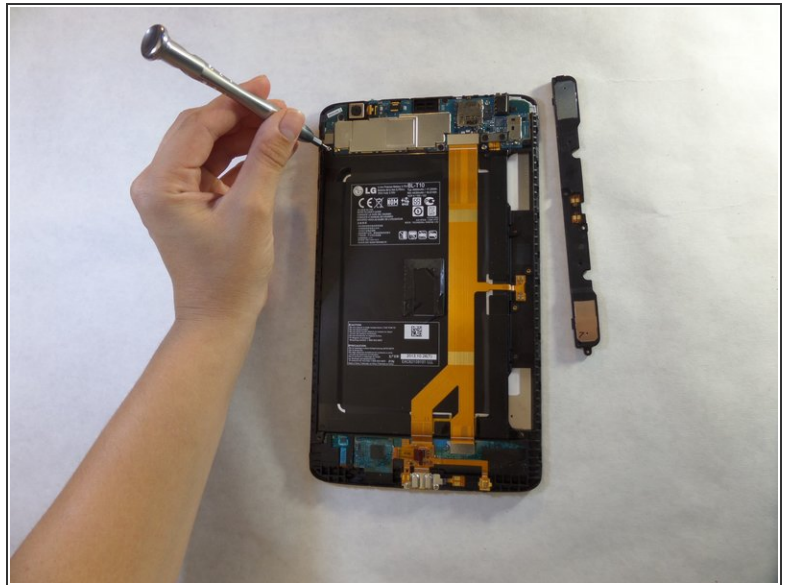
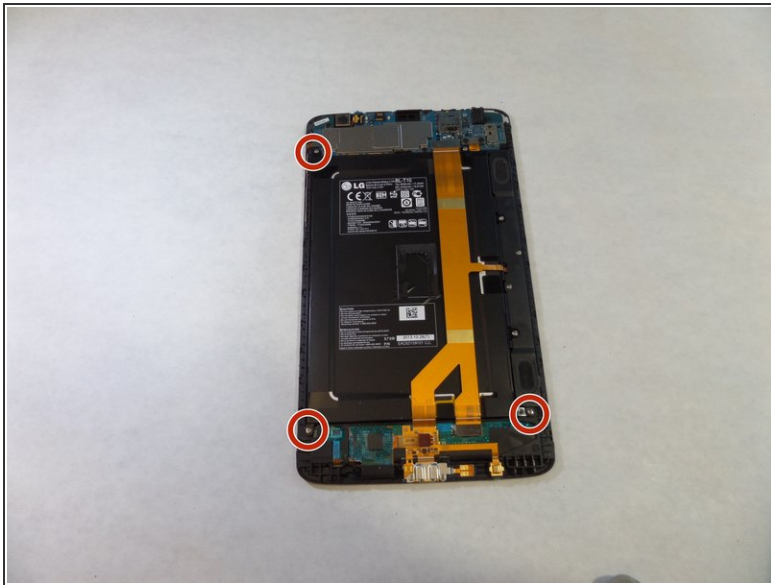
- Remove the four 3 mm Phillips #000 screws that are attached to the speaker.
- ⓘ These screws are very small so make sure to keep track of them. You can use iFixit's [Pro Magnetic Project Mat](#) to help.

## Step 5



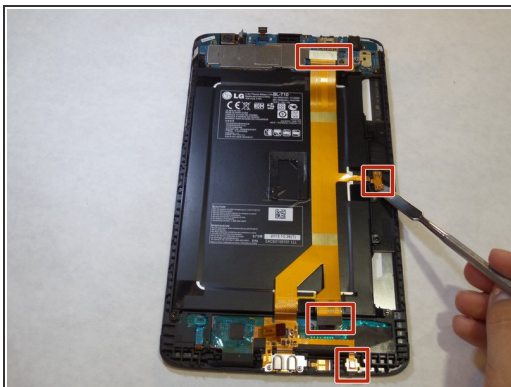
- Use your fingers to remove the speaker.

## Step 6 — Battery





- Remove the 3mm Phillips #000 screws from the corners of the battery.

## Step 7



- Using a spudger or a plastic opening tool, disconnect the ribbon cable from the right side of the device.

 The cable is attached with an adhesive.

 These images use a metal spudger, which has the potential to damage the device. Use a plastic opening tool or standard spudger instead.



## Step 8



- Using the Phillips #000 screwdriver, remove the two 3mm screws located at the bottom of the ribbon cable.
- Remove the ribbon cable from the device.

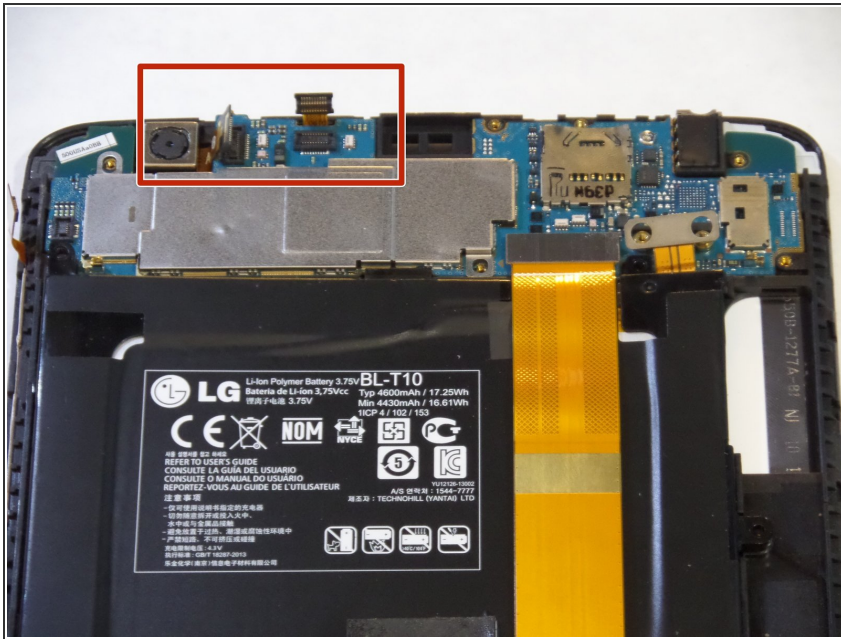
## Step 9



- Unhook the battery from the top of the device.



## Step 10 — Motherboard



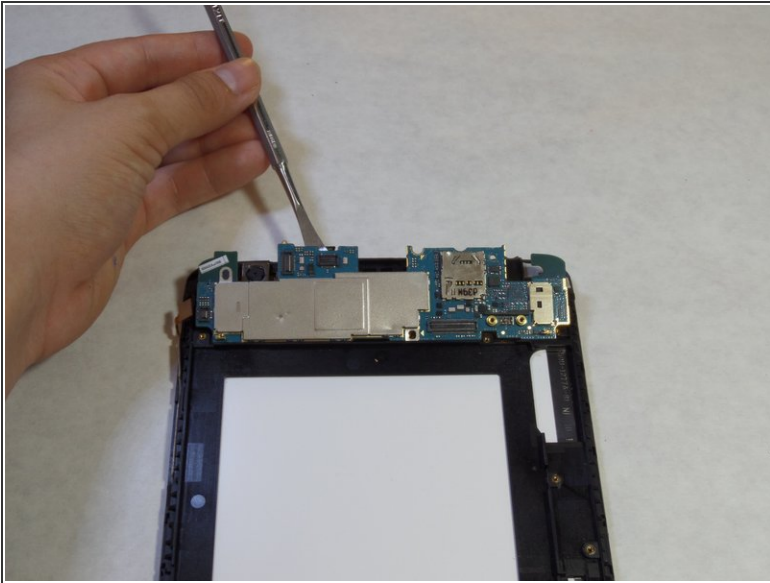
- Unhook the small yellow ribbon on top of the motherboard.

## Step 11



- Remove all the 3mm silver screws and the 2mm black screws on the motherboard and carefully lift it out of the device.

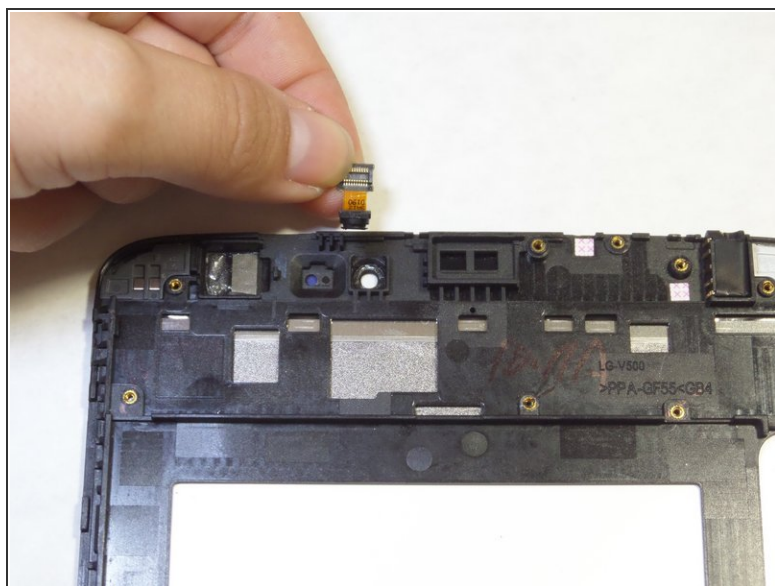
## Step 12



- Use a plastic opening tool to lift the motherboard out of the device.

⚠ These images use a metal spudger, which has the potential to damage the device. Use a plastic opening tool or standard spudger instead.

## Step 13 — Front Facing Camera



- Use a plastic opening tool to lift the front facing camera out of the device.

⚠ These images use a metal spudger, which has the potential to damage the device. Use a plastic opening tool or standard spudger instead.

To reassemble your device, follow these instructions in reverse order.