



# LG G Pad F 7.0 Battery Replacement

This guide covers the replacement of a battery for the LG G Pad F 7.0.

Written By: Matt Kloos





## TOOLS:

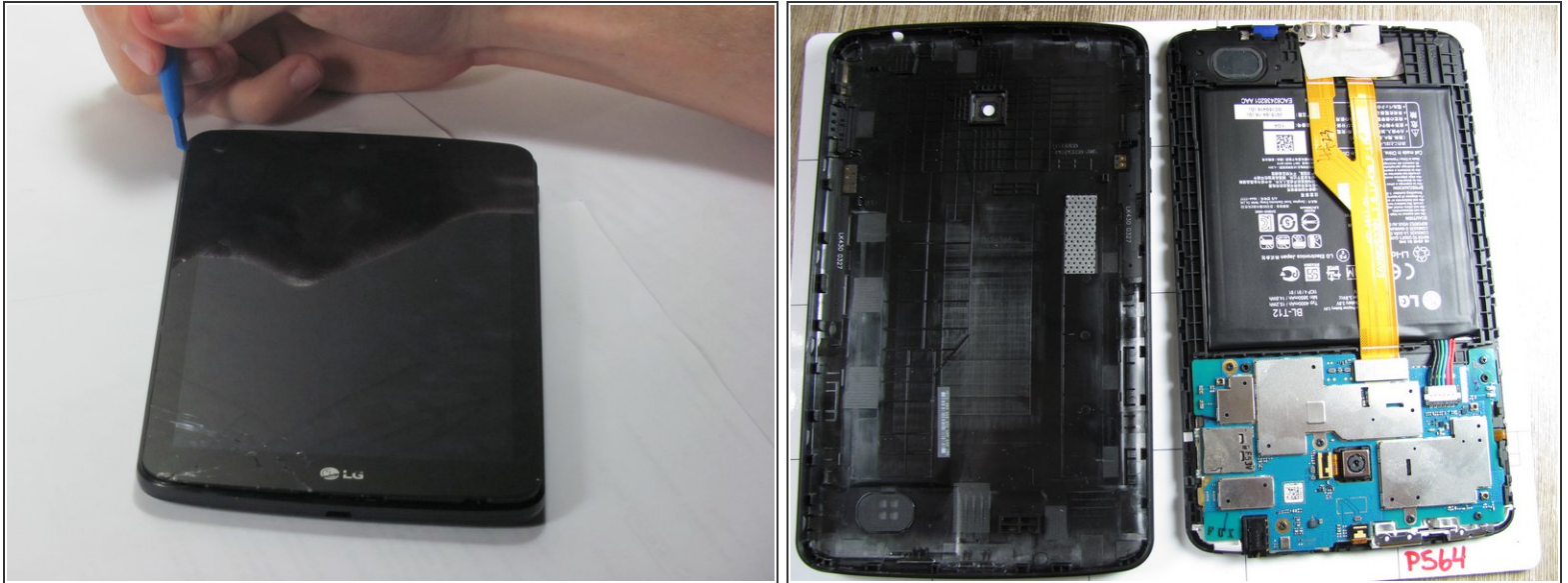
- [iFixit Opening Tools](#) (1)
-

## Step 1 — Battery



- Open up the SIM port, on the top right corner (screen face down).
- Press the SIM card (white plastic) to pop it out.
- Remove SIM card and set aside.

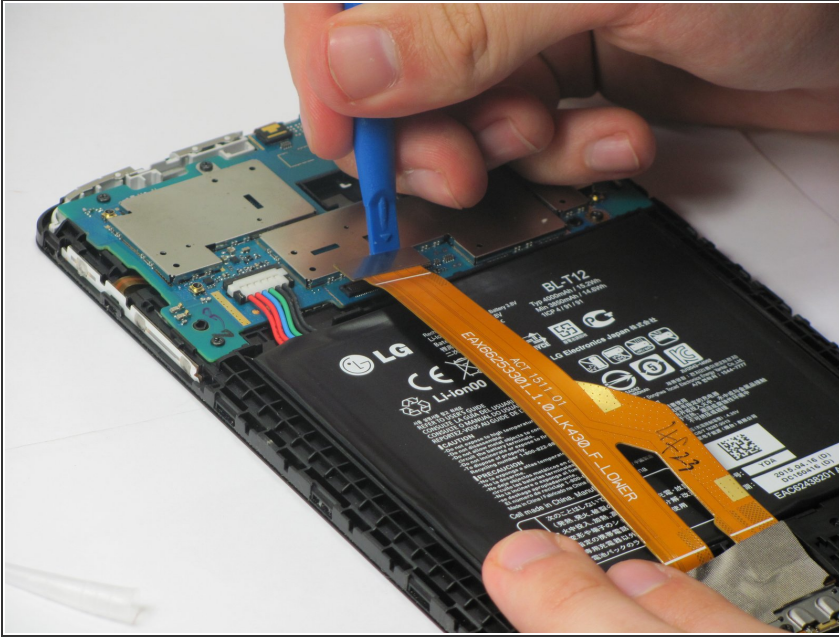
## Step 2



- Use the plastic opening tool to pry the plastic backing off of the internal block. Start at the location with the SIM port to avoid damage to internal components.
- Do this by finding the seam between the edge of the screen and the plastic backing, and prying between the two.
- Work your way all the way around the edge of the screen, and remove the plastic backing when it is loose.

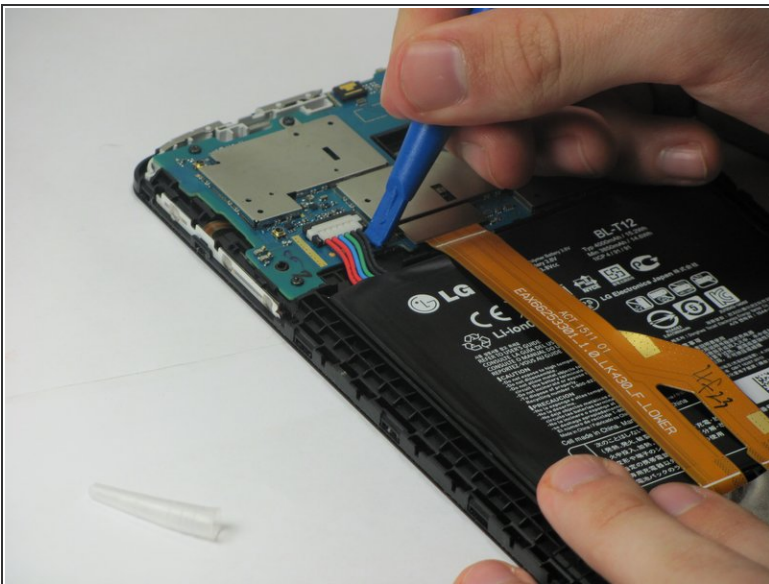


### Step 3



- Locate the large orange ribbon cable, pry off the side shown in the image.

### Step 4



- Use the plastic opening tool to pry the multicolor wire cables off, applying force up away from the tablet.
- Use the plastic opening tool to pry up the battery. There is adhesive underneath the battery, so use a small amount of force. Work your way around the edge of the battery to pry it off.

To reassemble your device, follow these instructions in reverse order.