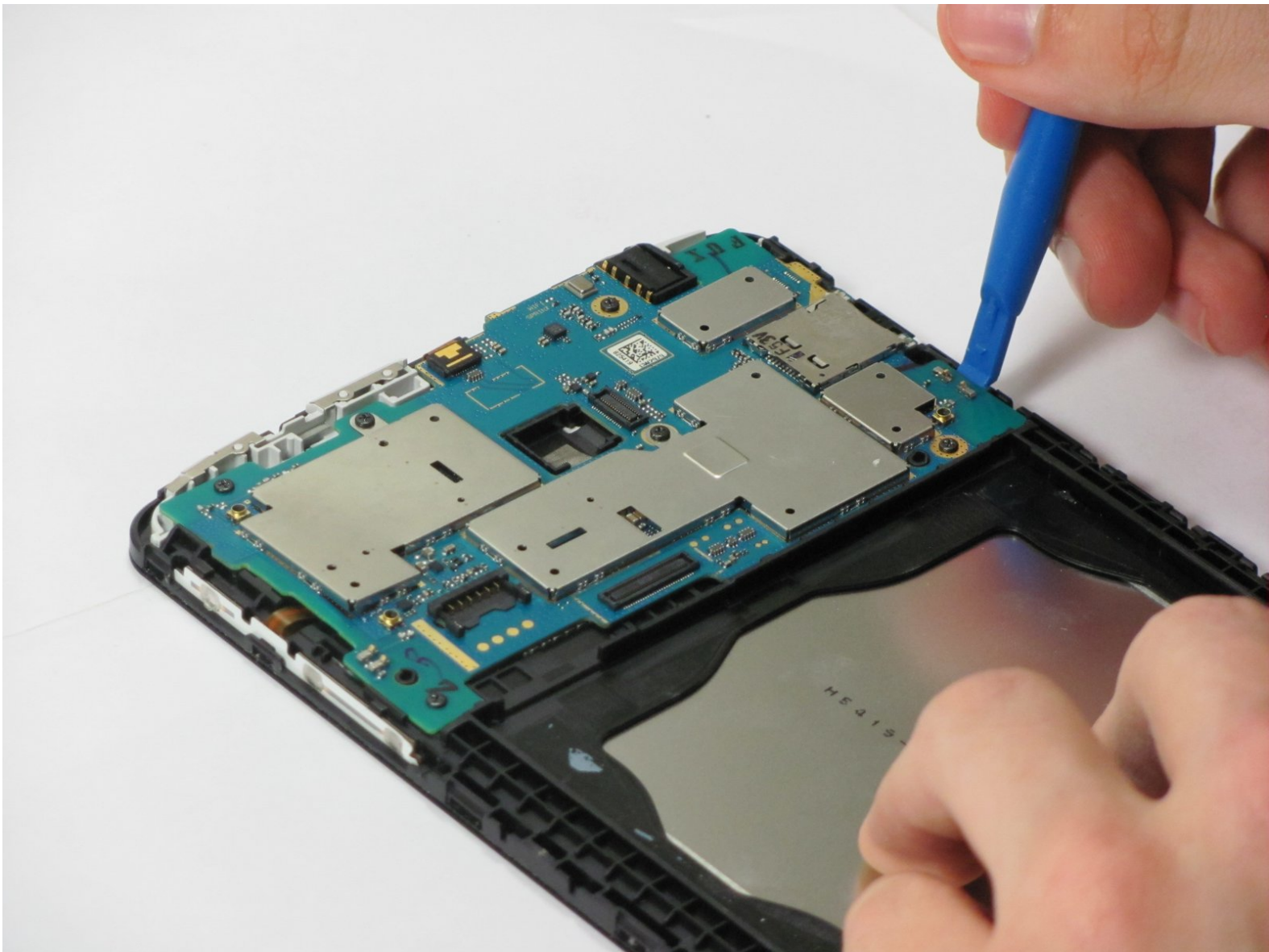




# LG G Pad F 7.0 Motherboard Replacement

Replacement for LG G Pad F 7.0 Motherboard

Written By: Jose Hurtado



# INTRODUCTION

This guide will cover how to replace the motherboard on the LG G Pad F 7.0



## TOOLS:

- [iFixit Opening Tools](#) (1)
- [Tweezers](#) (1)
- [Phillips #0 Screwdriver](#) (1)



## PARTS:

- [LG G Pad F 7.0 Replacement Motherboard](#) (1)

## Step 1 — Rear Camera



- Open up the SIM port, on the top right corner (screen face down).
- Press the SIM card (white plastic) to pop it out
- Remove SIM card and set aside

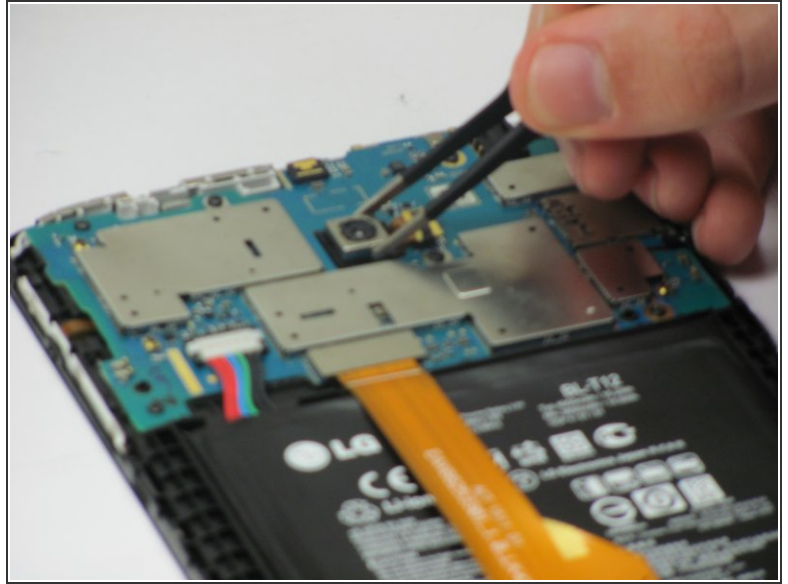
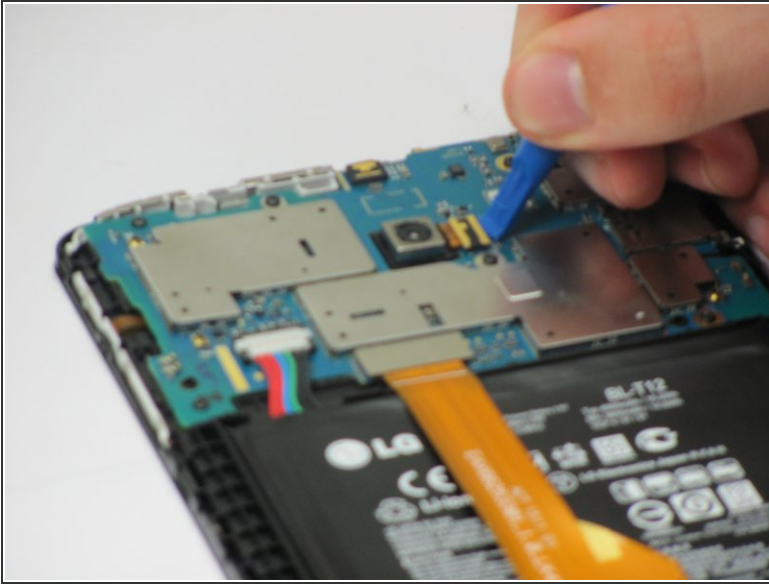
## Step 2



- Use the plastic opening tool to pry the plastic backing off of the internal block. Start at the location with the SIM port to avoid damage to internal components.
- Do this by finding the seam between the edge of the screen and the plastic backing, and prying between the two.

- Work your way all the way around the edge of the screen, and remove the plastic backing when it is loose.

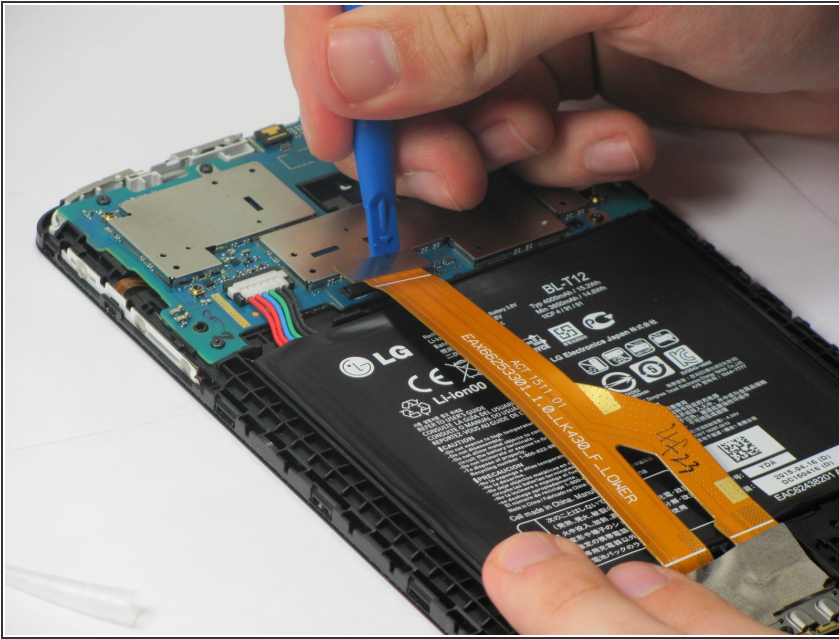
### Step 3



- Use the plastic opening tool to pry up the ribbon cable connecting to the camera unit.
- Once the ribbon cable has been detached, use the tweezers to pull up the camera. It is attached with adhesive so pull up gently to remove it.
- Once the old camera unit is removed, replace with new unit and reassemble in reverse order of guide.

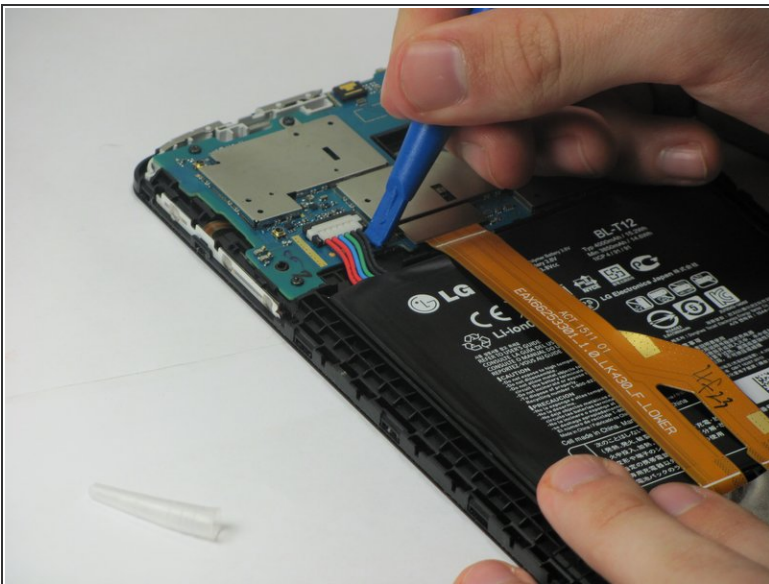


## Step 4 — Motherboard



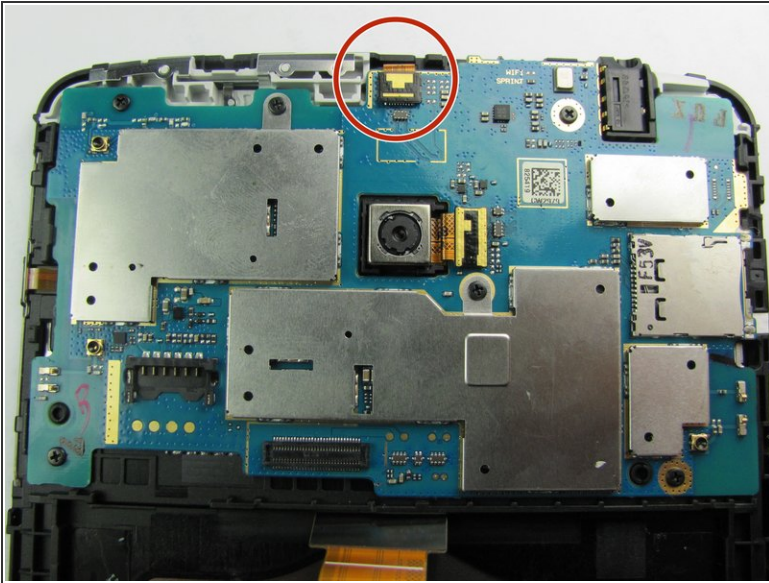
- Locate the large orange ribbon cable, pry off the side shown in the image.

## Step 5



- Use the plastic opening tool to pry the multicolor wire cables off, applying force up away from the tablet.
- Use the plastic opening tool to pry up the battery. There is adhesive underneath the battery, so use a small amount of force. Work your way around the edge of the battery to pry it off.

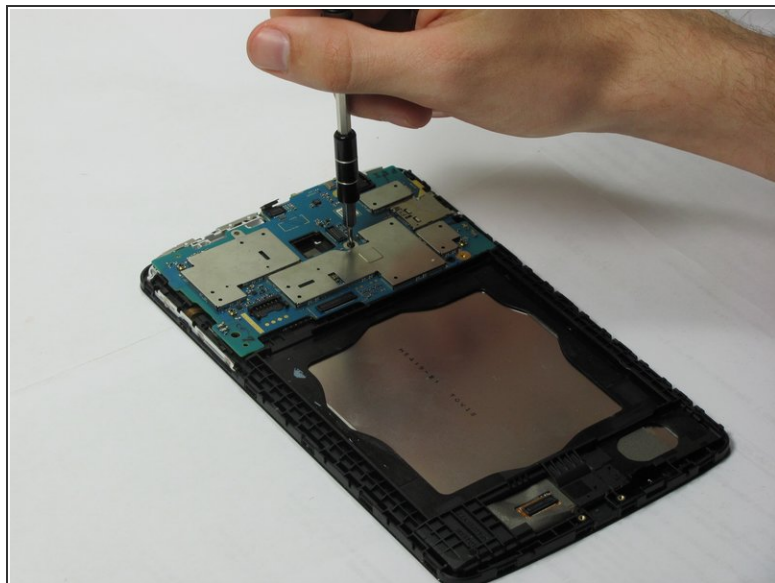
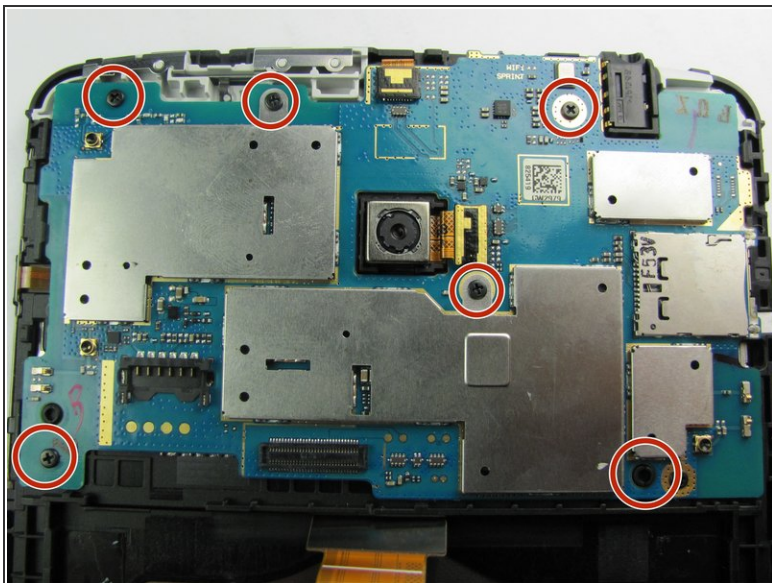
## Step 6



- Locate the front facing camera ribbon cable attachment on the motherboard
- Use the plastic opening tool to pry up the ribbon cable connecting to the camera unit
- Leave the ribbon cable disconnected.

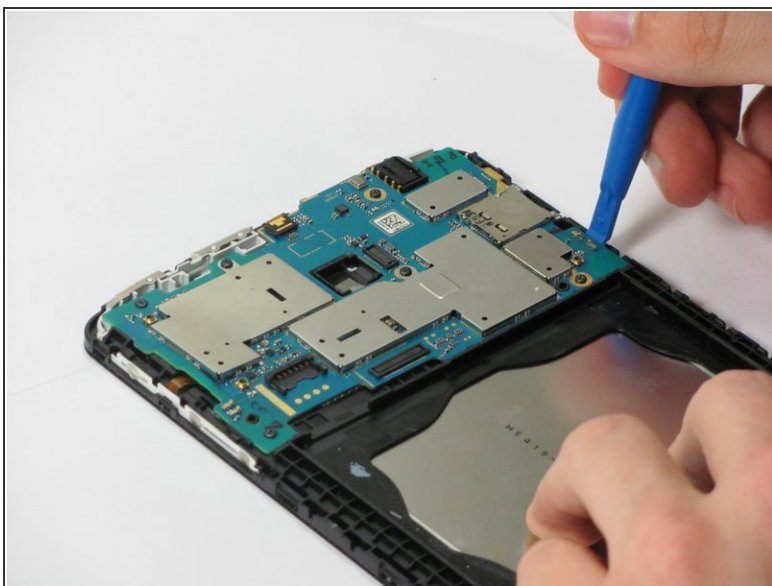


## Step 7



- Locate the six Phillips head screws on the LG G Pad F 7.0 Motherboard
- Use Phillips #0 Screwdriver to unscrew the six screws.

## Step 8



- Remove the motherboard by prying it out with the plastic opening tool (as shown in image).

To reassemble your device, follow these instructions in reverse order.