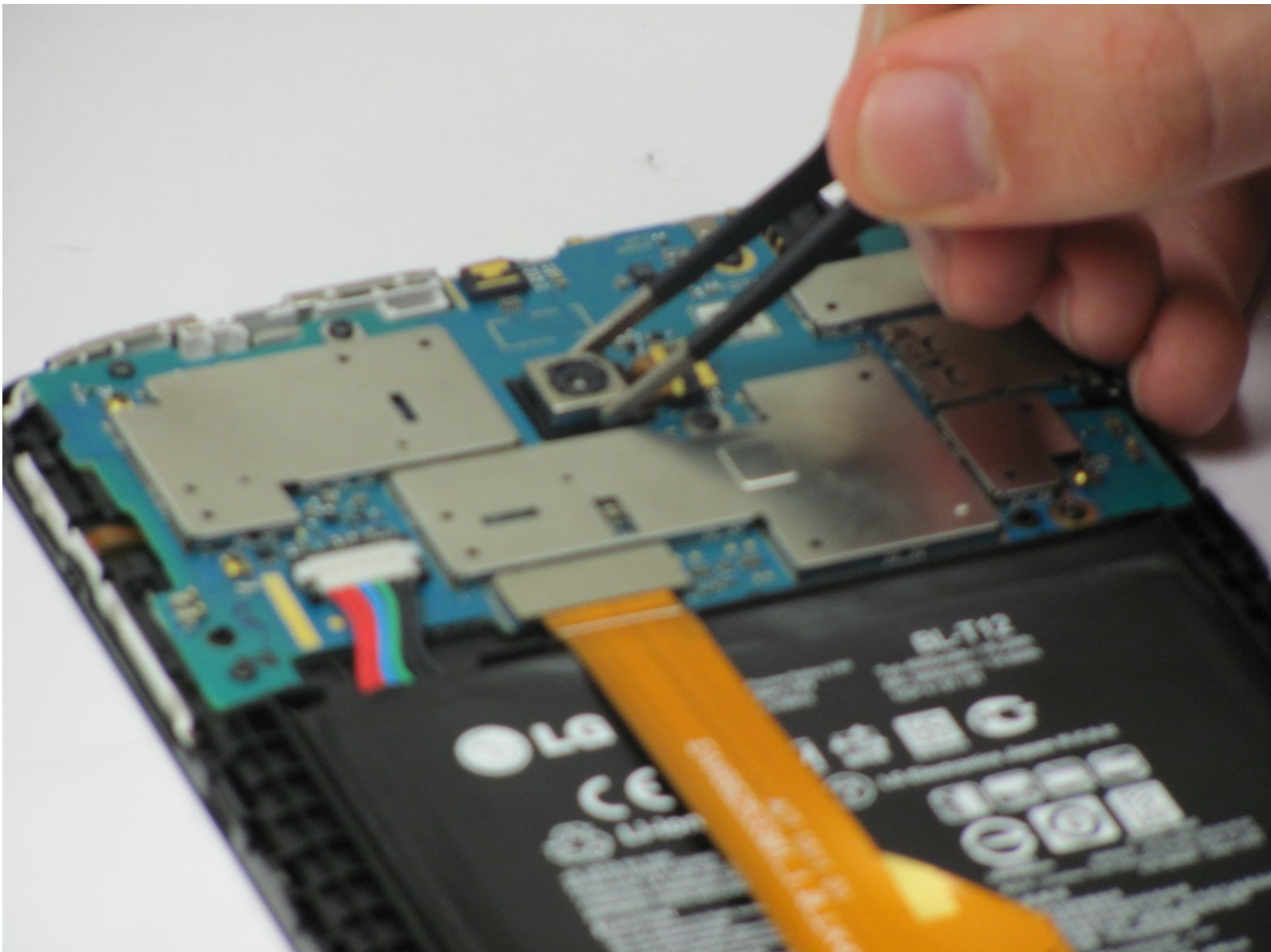




# LG G Pad F 7.0 Rear Camera Replacement

This guide covers the replacement of the rear camera on the LG G Pad F 7.0

Written By: Matt Kloos



---

# INTRODUCTION

This guide covers how to replace the rear camera on a LG G Pad F 7.0



## TOOLS:

- [iFixit Opening Tools](#) (1)
  - [Tweezers](#) (1)
-

## Step 1 — Rear Camera



- Open up the SIM port, on the top right corner (screen face down).
- Press the SIM card (white plastic) to pop it out
- Remove SIM card and set aside

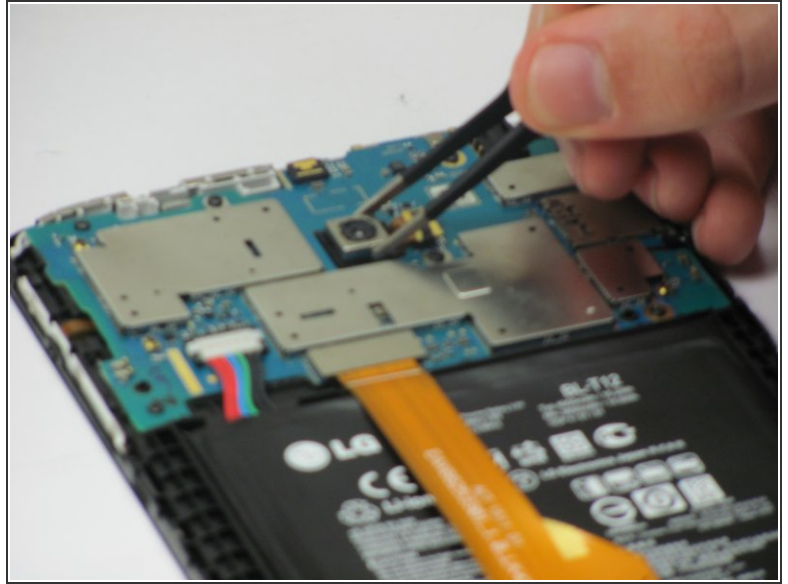
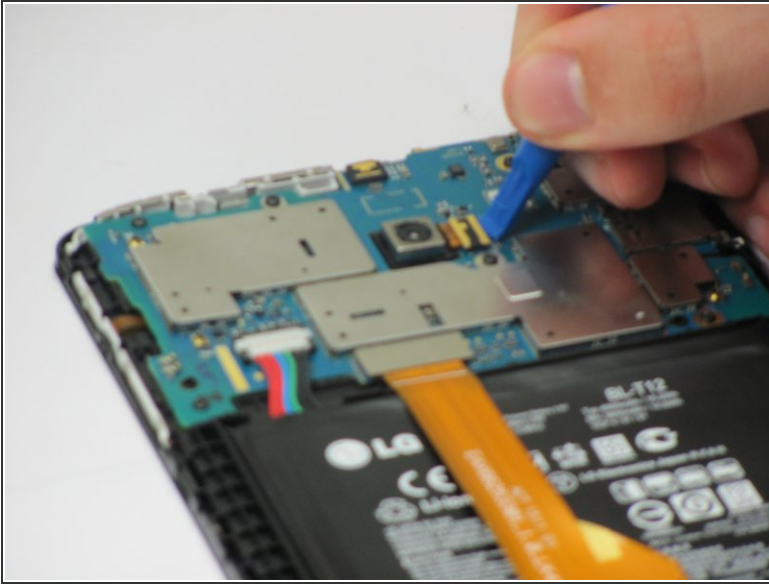
## Step 2



- Use the plastic opening tool to pry the plastic backing off of the internal block. Start at the location with the SIM port to avoid damage to internal components.
- Do this by finding the seam between the edge of the screen and the plastic backing, and prying between the two.

- Work your way all the way around the edge of the screen, and remove the plastic backing when it is loose.

### Step 3



- Use the plastic opening tool to pry up the ribbon cable connecting to the camera unit.
- Once the ribbon cable has been detached, use the tweezers to pull up the camera. It is attached with adhesive so pull up gently to remove it.
- Once the old camera unit is removed, replace with new unit and reassemble in reverse order of guide.

To reassemble your device, follow these instructions in reverse order.