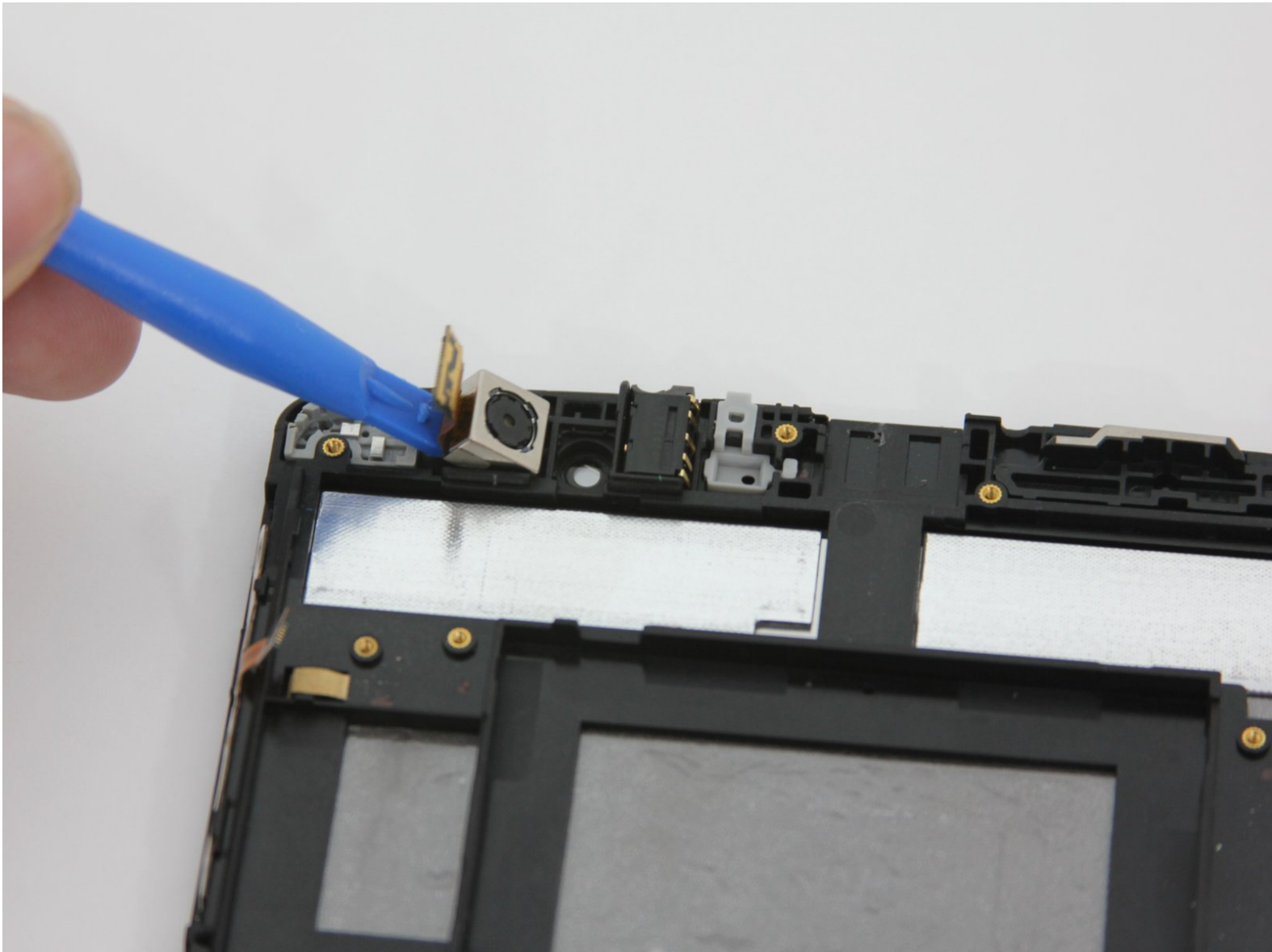




# LG G Pad X 8.3 Rear-facing camera Replacement

Replace your rear-facing camera on the LG G Pad X 8.3

Written By: Michael H



## INTRODUCTION

If you aren't able to take pictures or if the quality of the images on your tablet are poor, it may be time to replace the camera. This guide will properly show you how to replace the rear-facing camera on the LG G Pad X 8.3.

---

### TOOLS:

- [iFixit Opening Tools](#) (2)
  - [Phillips #000 Screwdriver](#) (1)
  - [Magnetic Project Mat](#) (1)
-

## Step 1 — Battery



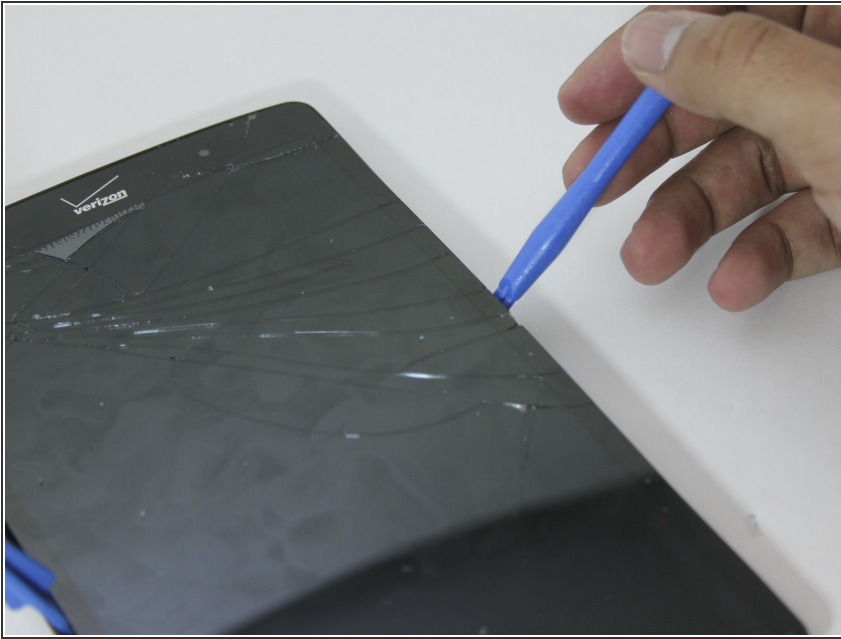
- Remove the cover of the SD card. Find it on the right side of the back of the tablet.
- Press the SD card in to make it pop out.

## Step 2



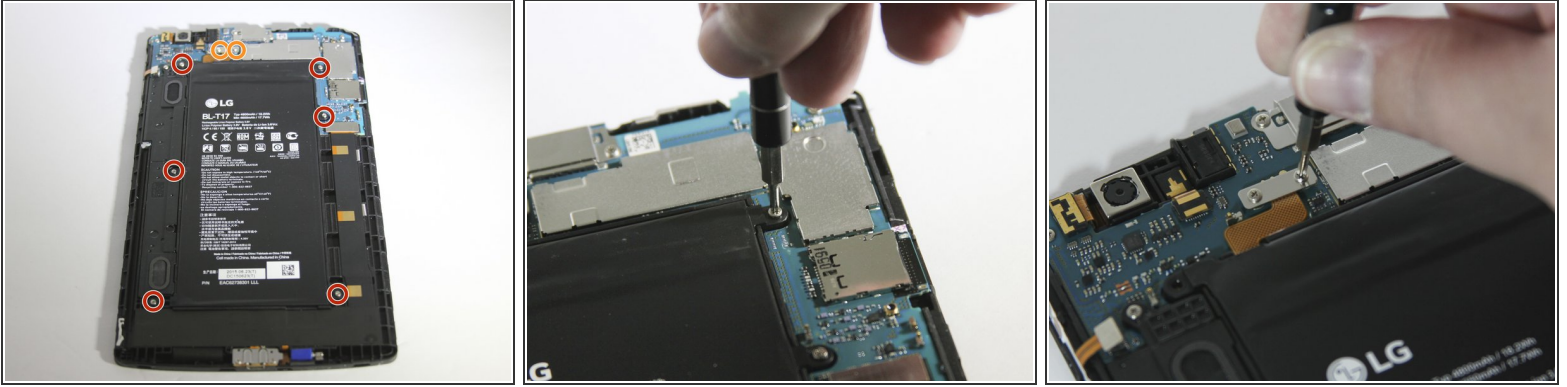
- Slide the stylus out from the bottom left corner of the back panel.

## Step 3



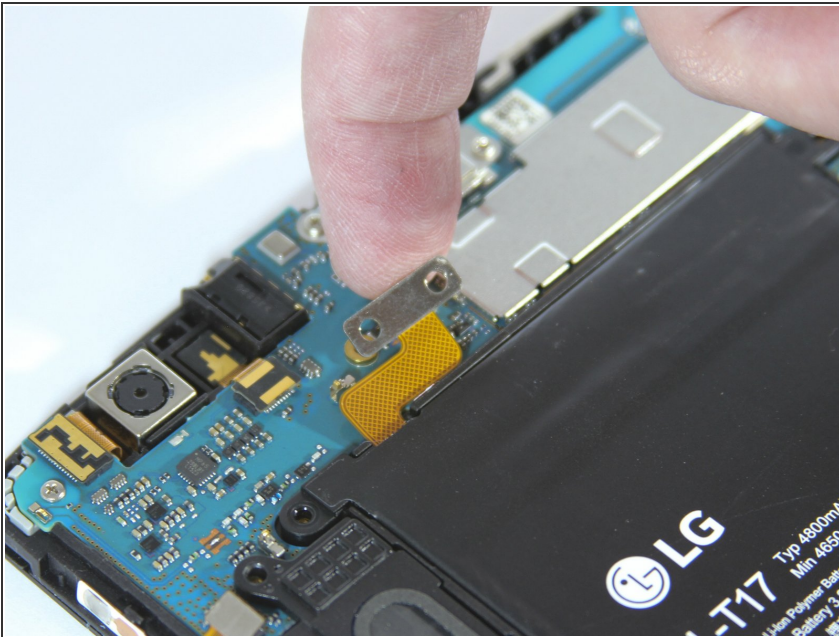
- Start at a corner and pry the screen up with a plastic opening tool.
  - ⓘ You can also use a plastic spudger for this task, but do not use metal tools. They can be dangerous to you and the device.
  - Slide the tool in the seam at the edge of the screen.
  - Wedge additional plastic opening tools in the seam to help lift the screen.
  - Slide both wedged plastic opening tools towards the bottom to pop the screen loose.
- ⚠ If your screen is cracked, work slowly to avoid flinging glass shards when prying.

## Step 4



- With a Phillips #000 screwdriver, unscrew the six 4.0 mm screws that hold down the battery.
- With the Phillips #000 screwdriver, unscrew the two 4.0 mm screws that hold down the battery ribbon connector.
- Use a magnetic mat to keep track of these tiny screws for later reassembly.

## Step 5



- Lift the battery ribbon connector with your finger.

## Step 6



- Lift the battery with your fingers and remove it from the device.

## Step 7 — Speaker



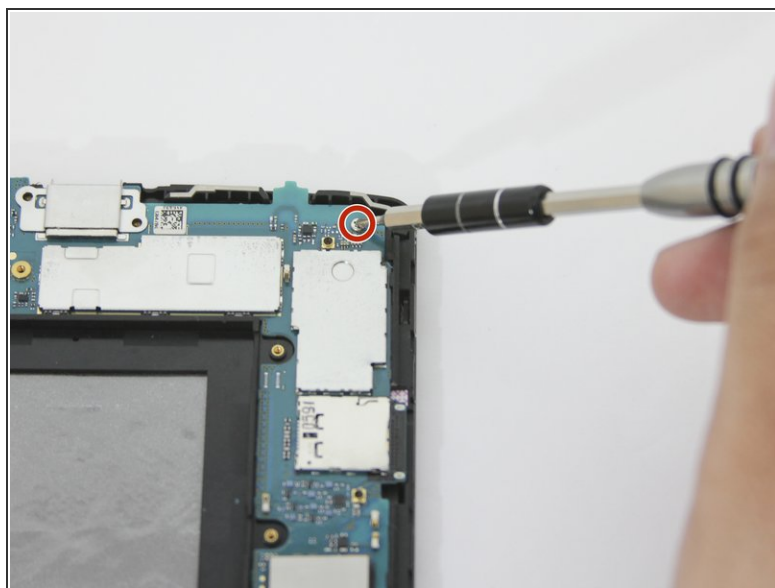
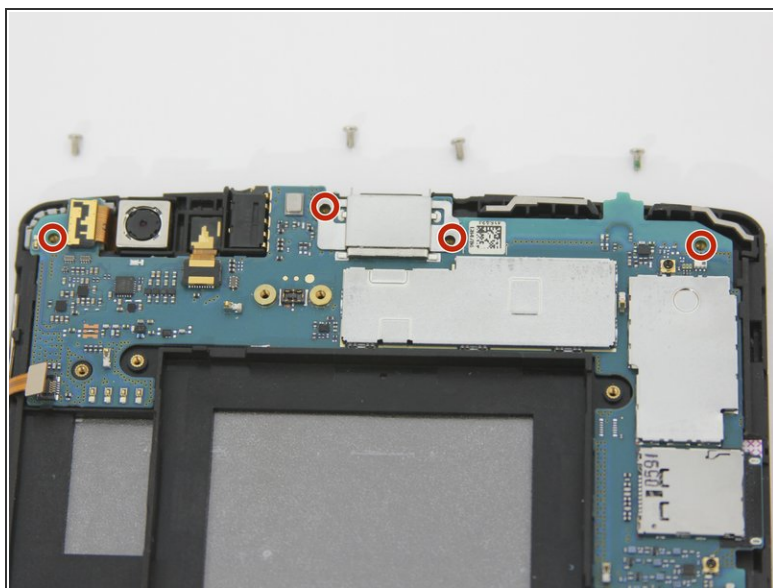
- With a Phillips #000 screwdriver, unscrew the one 4.0 mm screw that is holding down the speaker.
- Use the magnetic mat to keep track of the tiny screw(s).

## Step 8



- Lift and remove the speaker with your finger.

## Step 9 — Motherboard



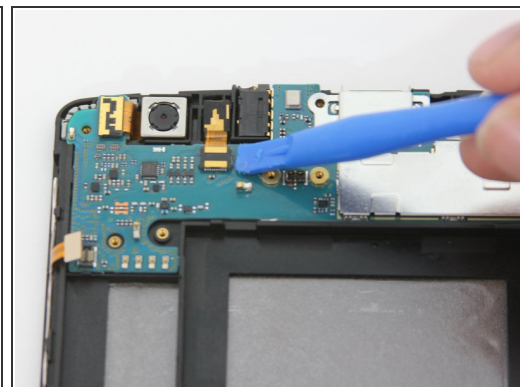
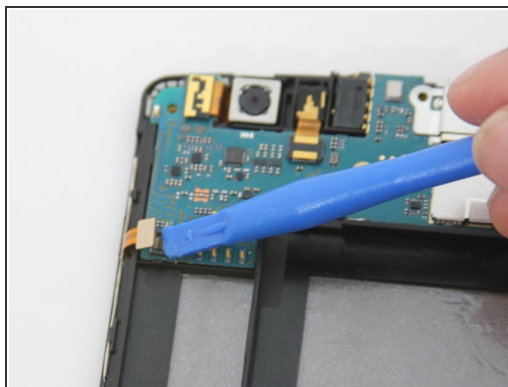
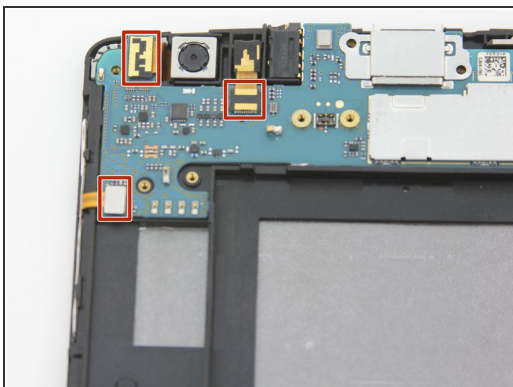
- With the Phillips #000 screwdriver, unscrew the four 4.0 mm screw that are holding down the motherboard.

## Step 10



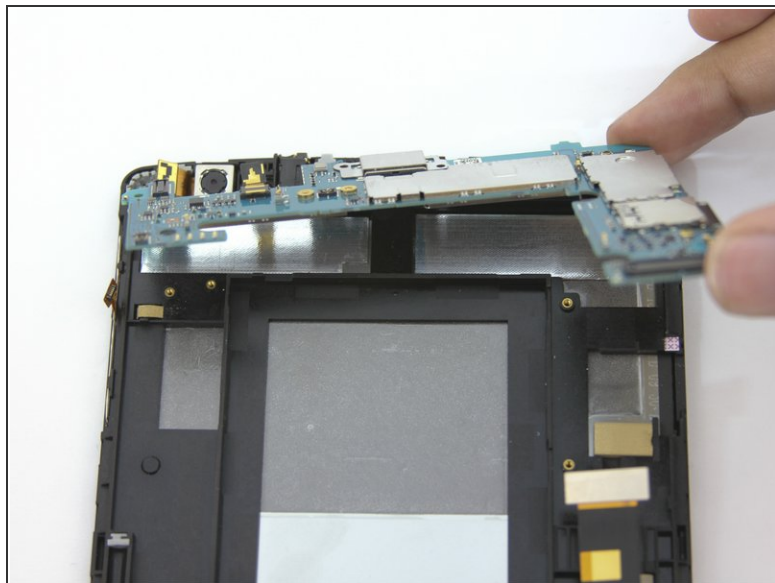
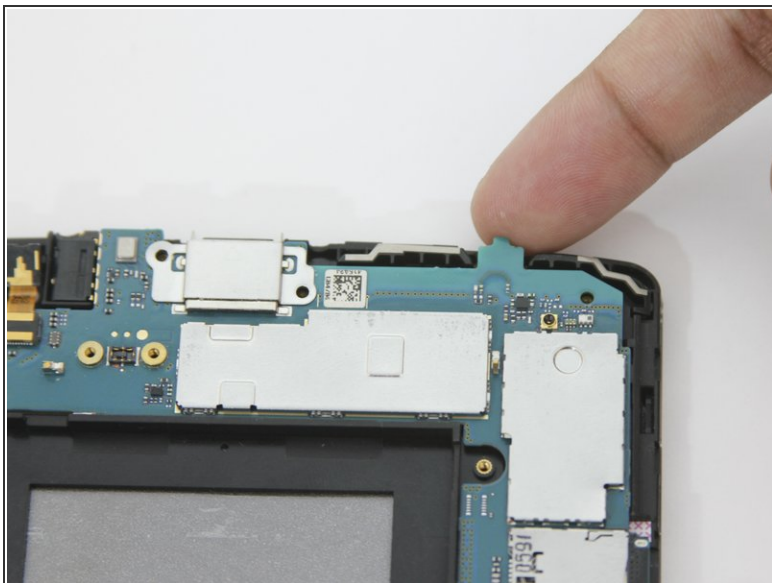
- Use a plastic opening tool to lift up the ribbon connector at the bottom of the motherboard.
- ⚠ Only lift up the end of the ribbon connector that is attached to the motherboard. The end at the base of the tablet should stay attached.

## Step 11



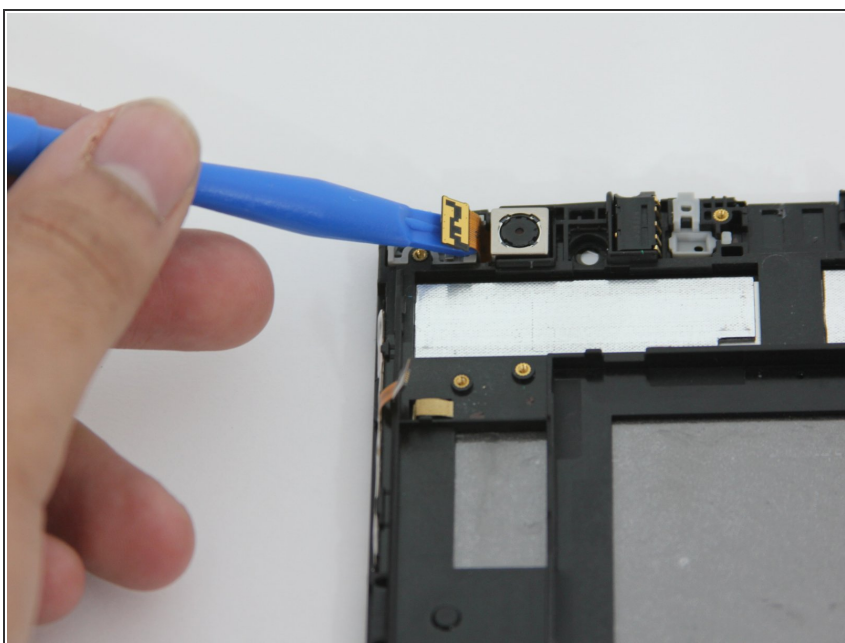
- Lift and release the remaining ribbon connectors in the upper left corner of the motherboard with a plastic opening tool.
- ⚠ Avoid bending the tips of the ribbon connectors to prevent damage.

## Step 12



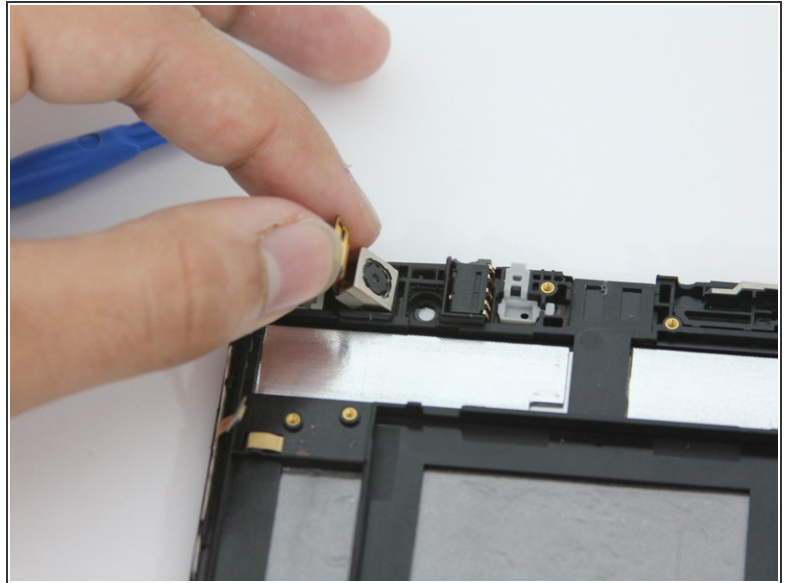
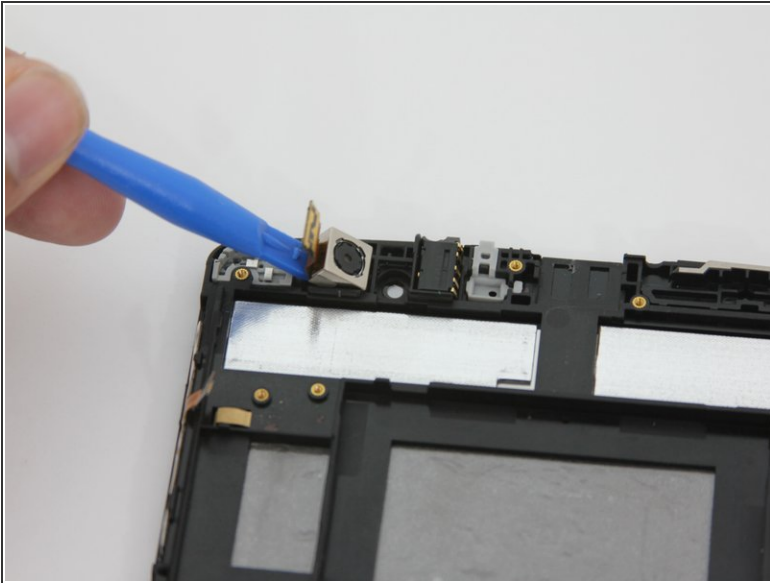
- With your fingers, lift up the motherboard from the upper right corner.
- Carefully remove the fragile motherboard from the device.

## Step 13 — Rear-facing camera



- Insert the plastic opening tool under the ribbon connector that is holding the rear-facing camera down and lift it up.

## Step 14



- After prying ribbon connector, the rear-facing camera should be ready for removal.
- Gently lift the rear-facing camera with your fingers and remove.

To reassemble your device, follow these instructions in reverse order.