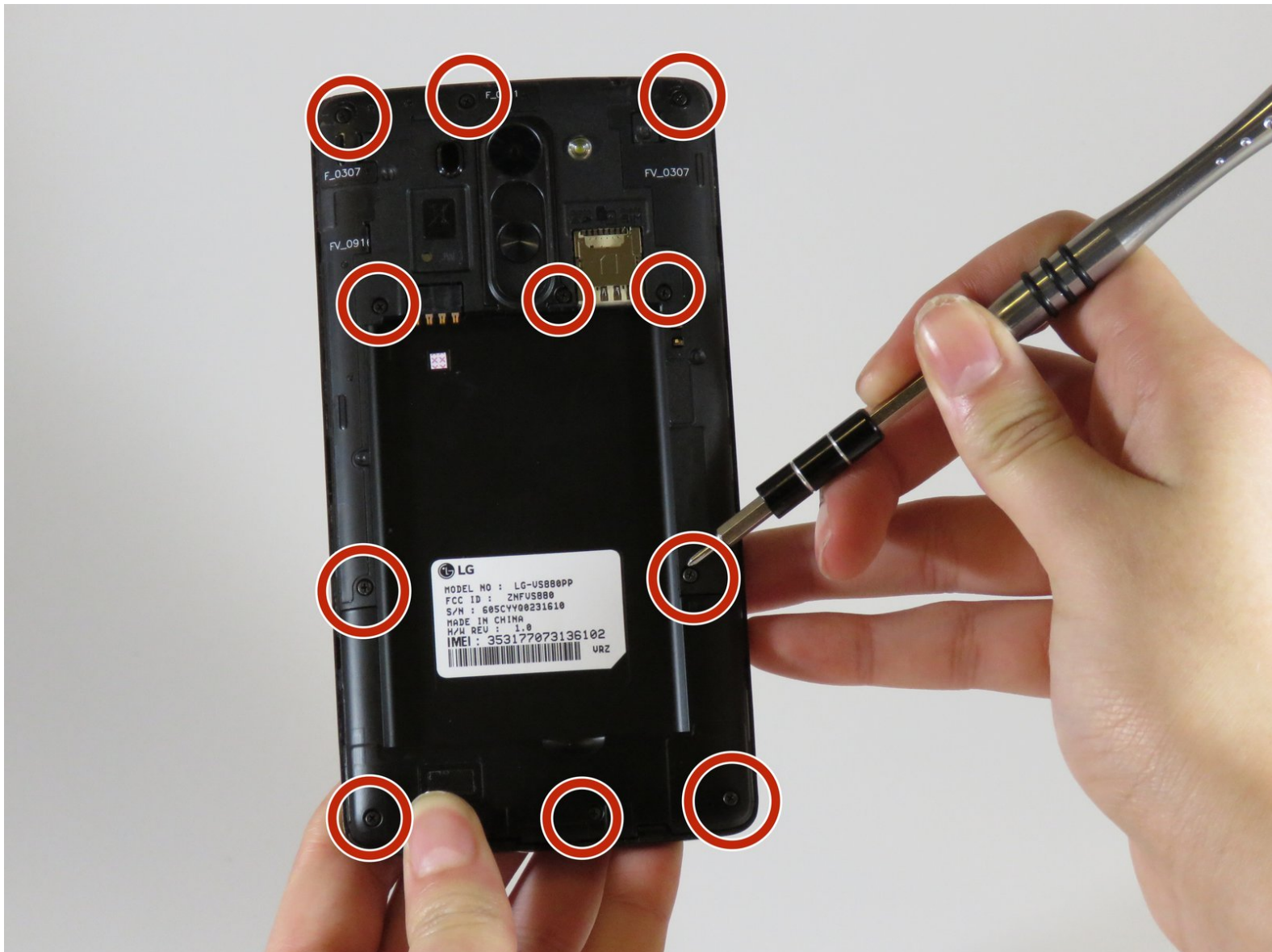




# LG G Vista Charging Dock Replacement

Use this guide to replace the charging dock of your LG G Vista device.

Written By: Key Baker



# INTRODUCTION

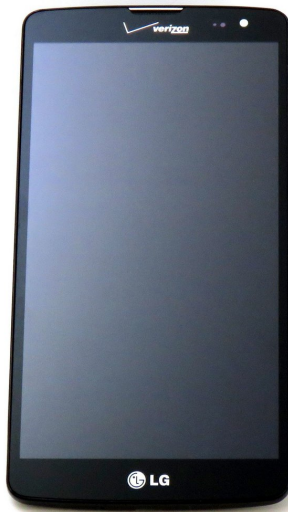
This guide will teach you how to replace the charging dock in your LG G Vista. In this guide you will need tweezers, and a spudger.



## TOOLS:

- [Phillips #000 Screwdriver](#) (1)
  - [iFixit Opening Tools](#) (1)
  - [Spudger](#) (1)
-

## Step 1 — Battery



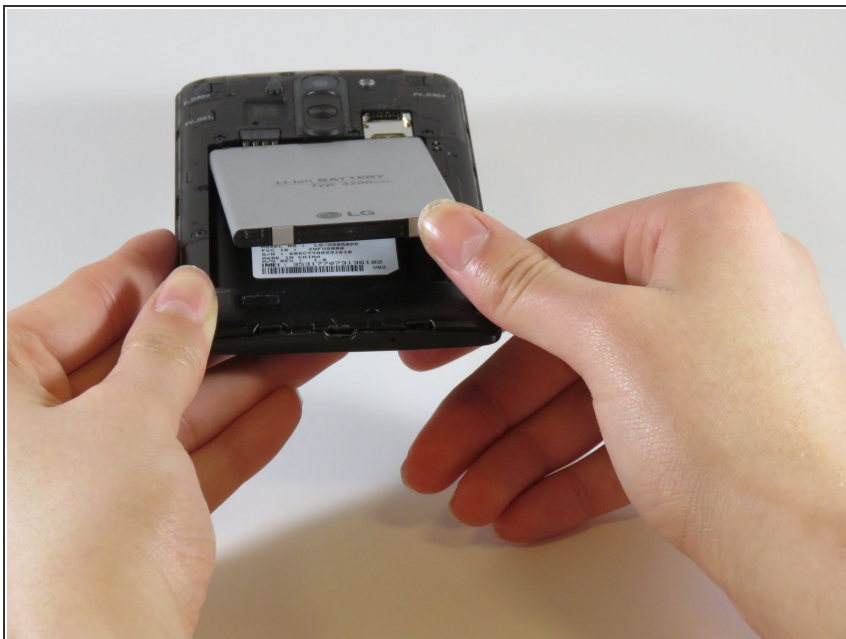
- Make sure the device is powered off.

## Step 2



- Remove the back cover by gently prying open the case of the device from the charging port.

## Step 3



- Lift the battery out of its place by prying up from the small notch at the base of the battery.

## Step 4 — Charging Dock



- Using a Phillips #000 screwdriver, remove the eleven 3.0 mm screws around the perimeter of the phone.



## Step 5



- Use a plastic spudger, or finger nail, to lift up the hard shell on the top of the phone.

## Step 6



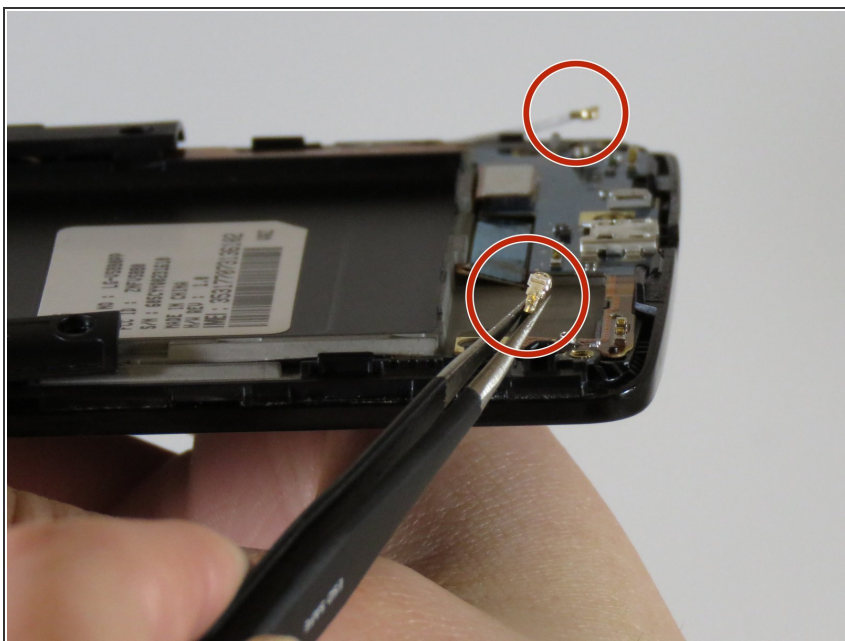
- Use a Phillips #000 screwdriver to remove the five 3.0 mm screws.
- Remove the bottom hard shell from the device.

## Step 7



- Using a Phillips #000 screwdriver, remove the two screws from the device.

## Step 8



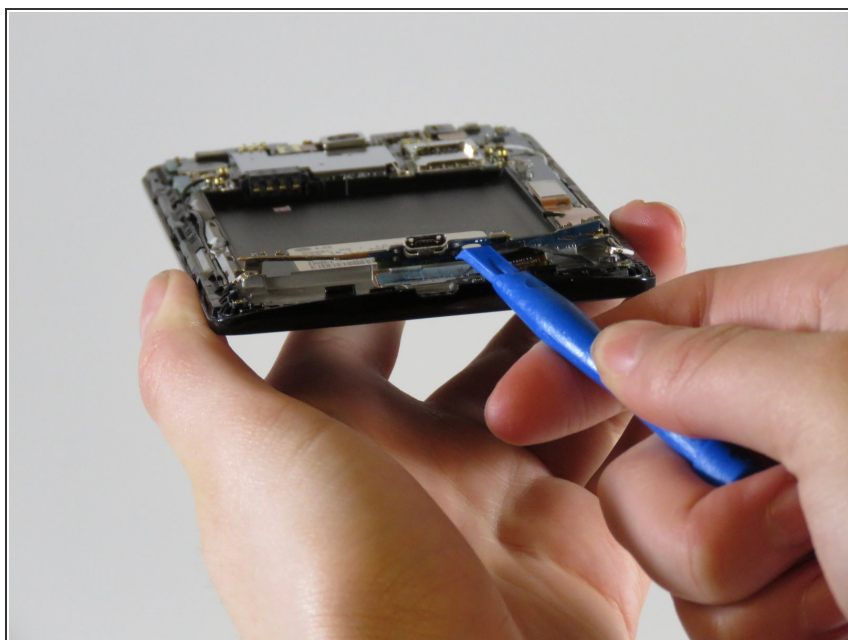
- Using a pair of tweezers, lift up the two antennas surrounding the battery.

## Step 9



- Disconnect the two connectors on the right side of the charging port.

## Step 10



- Lift up the charging port with the plastic opening tool.
- Remove the charging port from the device.

To reassemble your device, follow these instructions in reverse order.