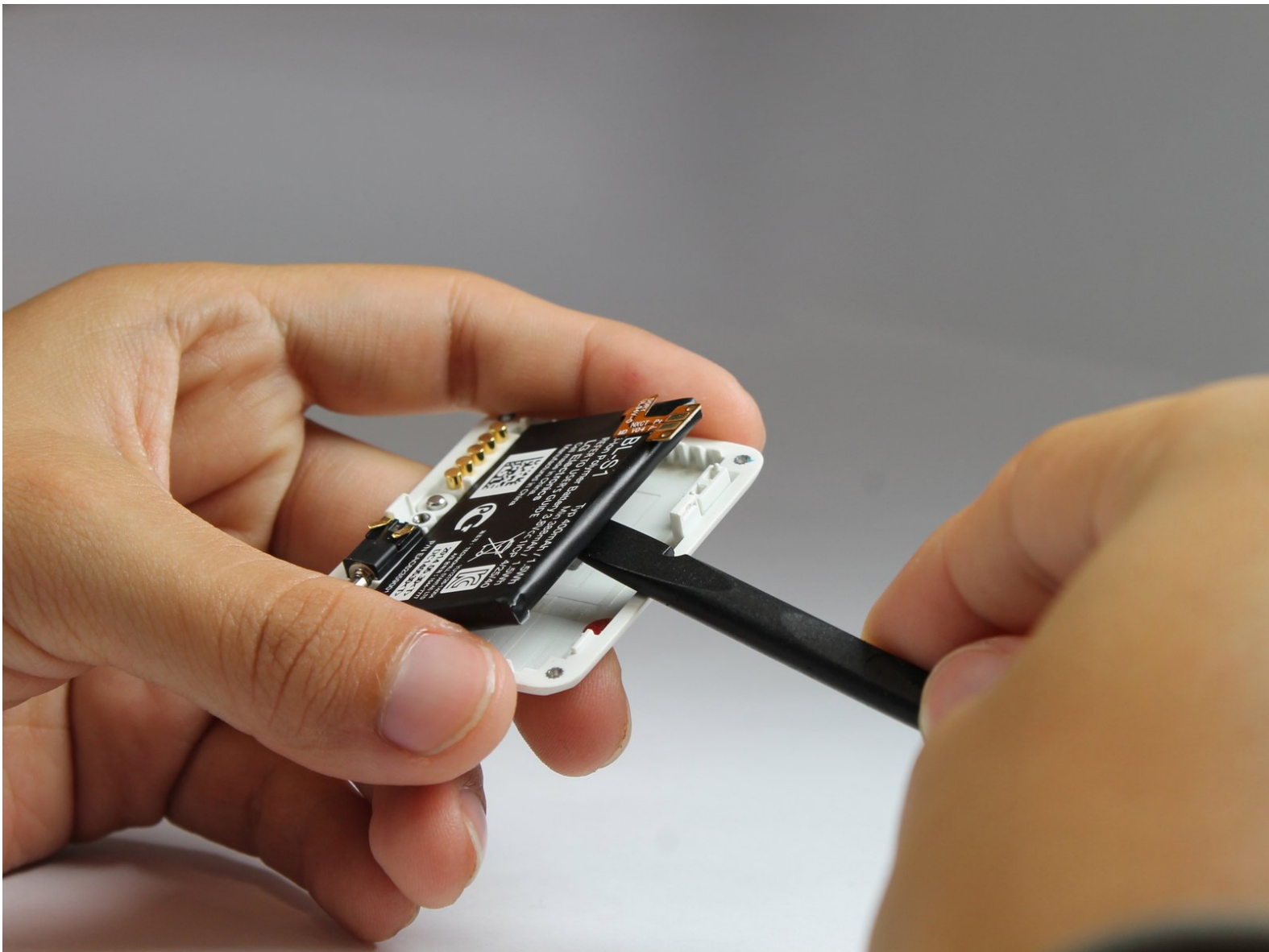




LG G Watch Battery Replacement

This guide shows how to separate the back of the watch from the face as well as how to remove and replace the battery.

Written By: Deja Miller



INTRODUCTION

If your watch does not power on after being on the charging station for about an hour the battery needs to be replaced.



TOOLS:

- [Spudger](#) (1)
- [iFixit Opening Picks set of 6](#) (1)
- [Tweezers](#) (1)
- [T5 Torx Screwdriver](#) (1)
- [Phillips #000 Screwdriver](#) (1)



PARTS:

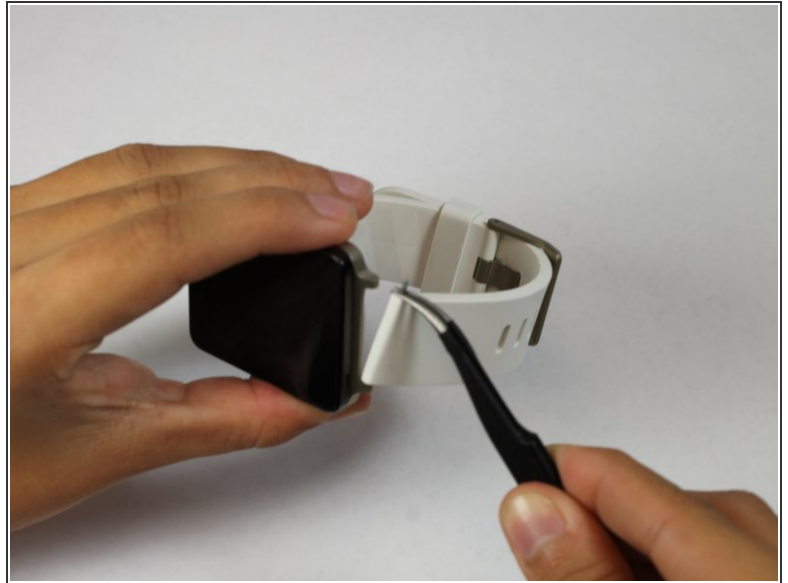
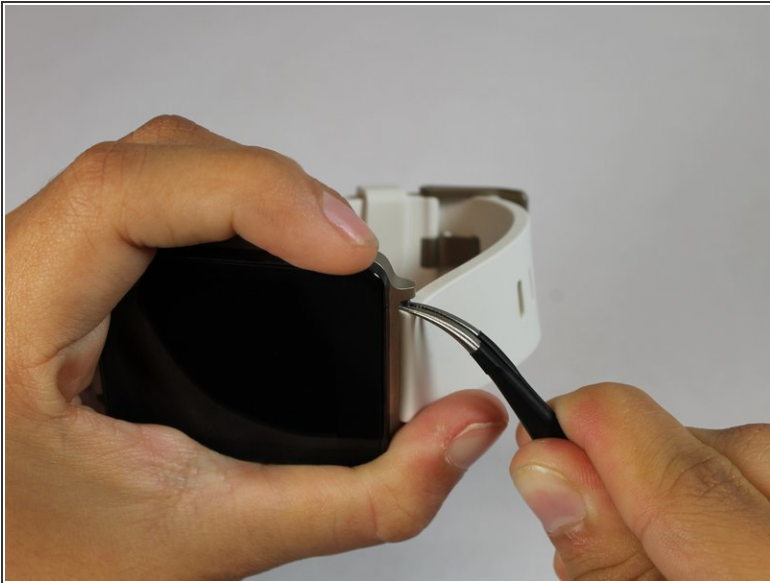
- [Replacement LG BL-S1 Battery](#) (1)



Step 1 — Wristband



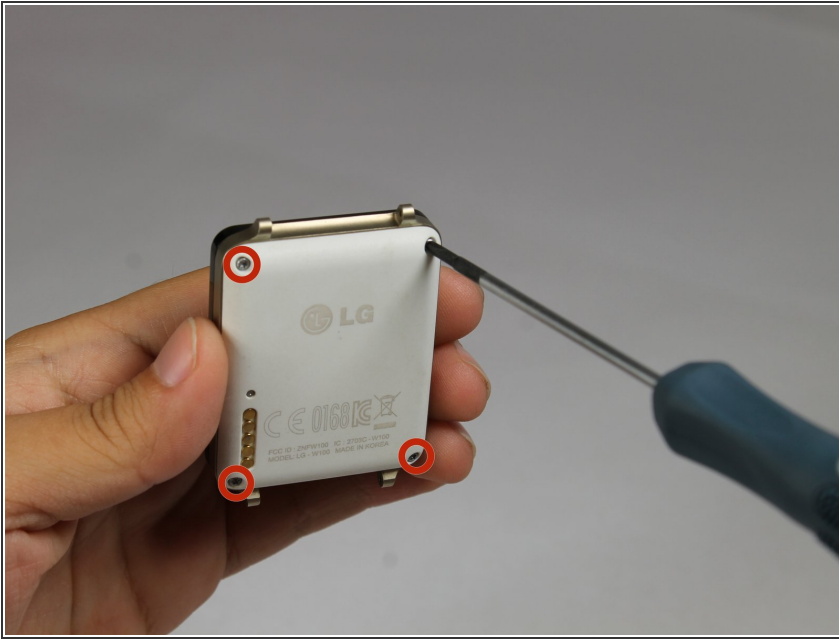
- ① Spring bars attach the two halves of the wristband to the watch body. The spring bar has a shoulder on either end.
- ① Be prepared to apply some pressure with your fingers to perform the following action.
 - First, slide the wristband down on the spring bar to expose the shoulder of the spring bar.
 - Grasp the exposed shoulder with the tweezers to perform the next step.

Step 2



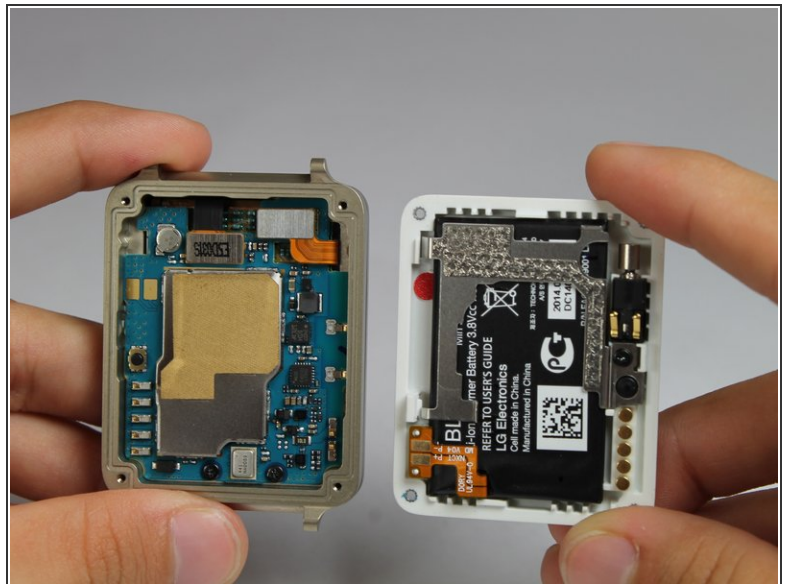
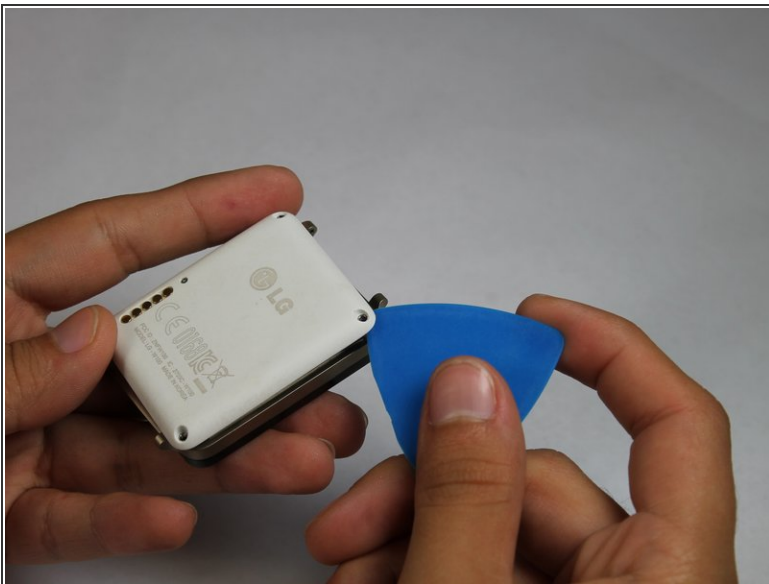
-  This is a challenging step. Do it carefully to prevent the spring bar from flying out of the wristband.
- Use the tweezers to depress the spring bar so that it collapses by a few millimeters and pops out of the hole that was holding it in place.
 - Now carefully pull the other end of the spring bar to detach the wristband from the watch face.
-  Repeat steps 1 and 2 for the other wristband.

Step 3 — Rear Case



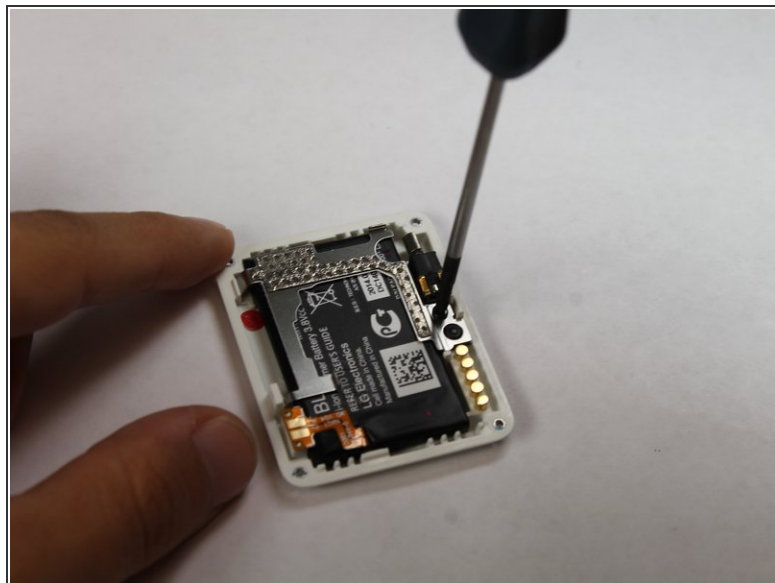
- Use the T5 Torx screwdriver to unscrew the four silver 2mm x 3mm T5 screws that hold the back cover in place.

Step 4



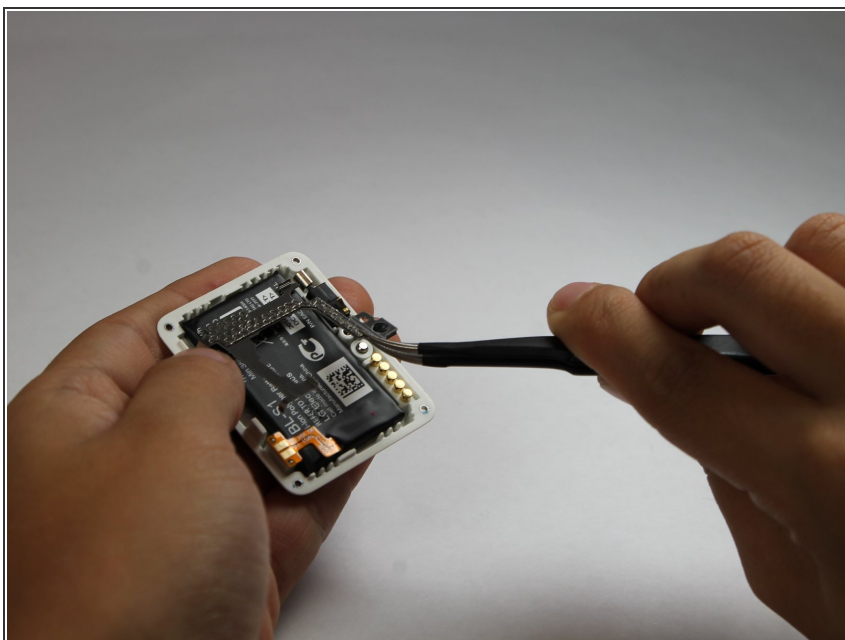
- Slide the opening pick between the rear case and the rest of the device to separate the two halves.
- Gently pull the two halves apart.

Step 5 — Battery



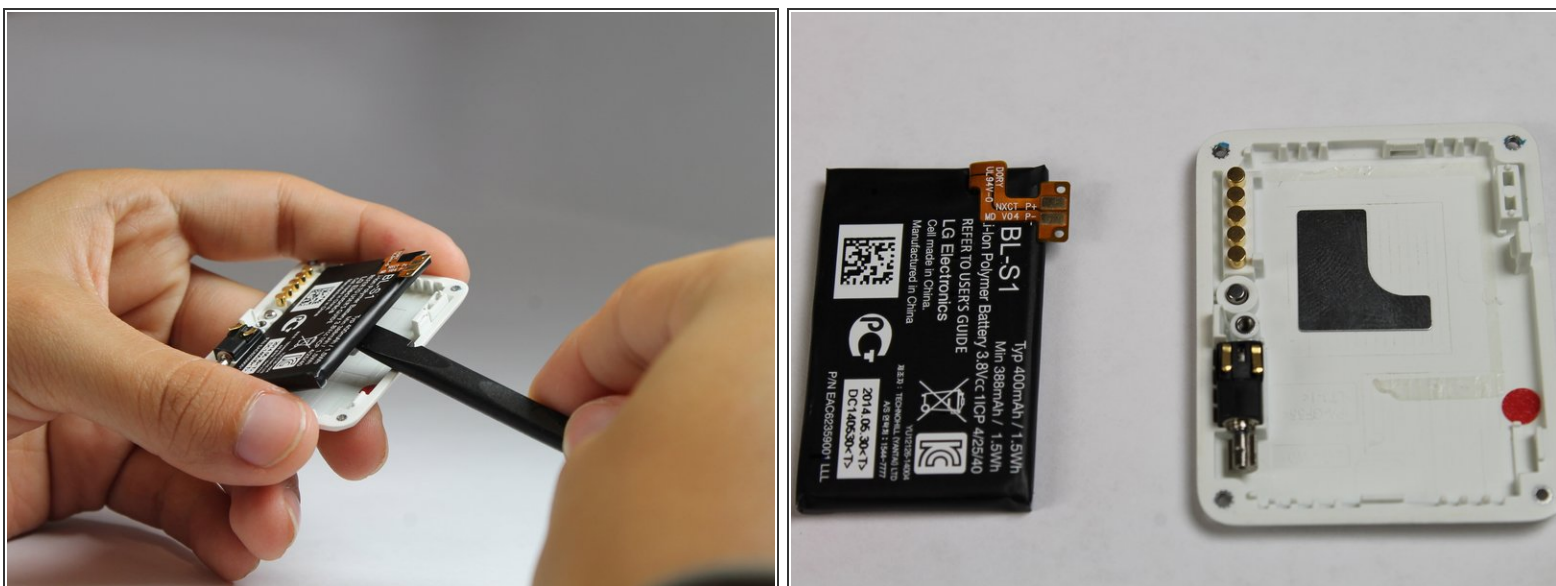
- Remove the two black Phillips #000 2.5x3mm screws that are located on the right side of the metal clip.

Step 6



- Use a pair of tweezers to gently lift the metal retaining clip up and out of the way.

Step 7



- Use a spudger to gently pry the battery up from the rear case.
 - ⓘ The battery is attached with a small amount of adhesive, so some force may be required.

To reassemble your device, follow these instructions in reverse order.