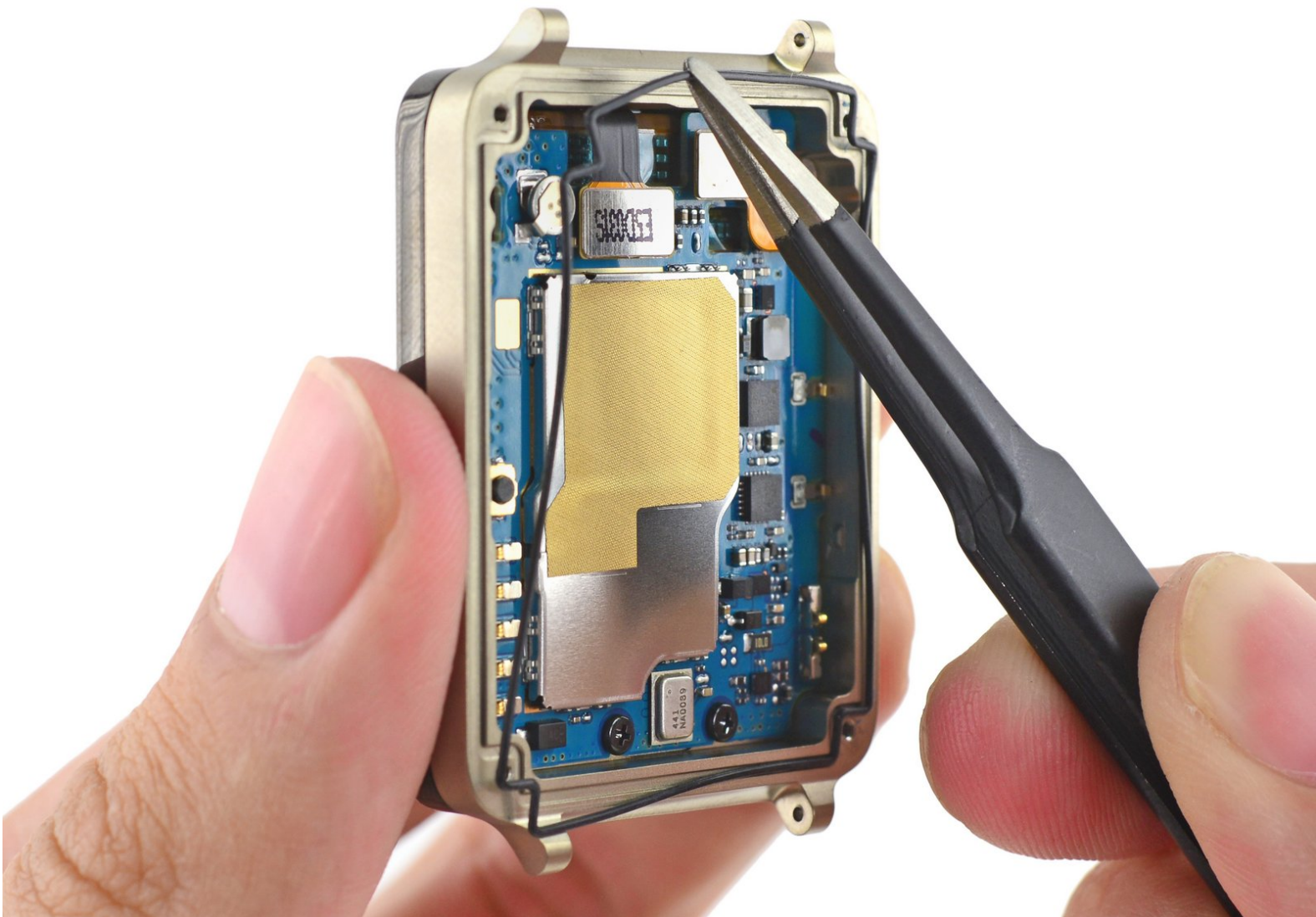




LG G Watch Gasket Replacement

This guide shows you how to replace the gasket that seals water and dust out of the watch.

Written By: Deja Miller



INTRODUCTION

If moisture has entered your LG G Watch, you will need to replace the gasket, and possibly the battery and the motherboard.

TOOLS:

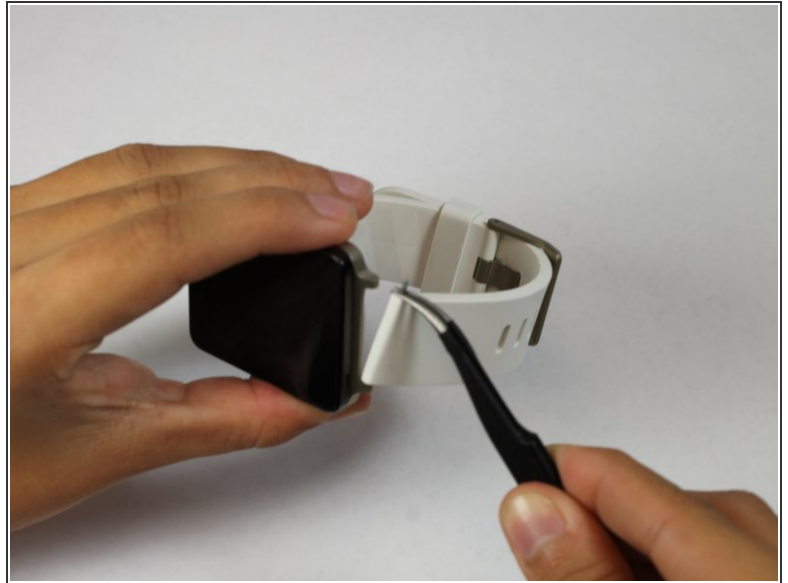
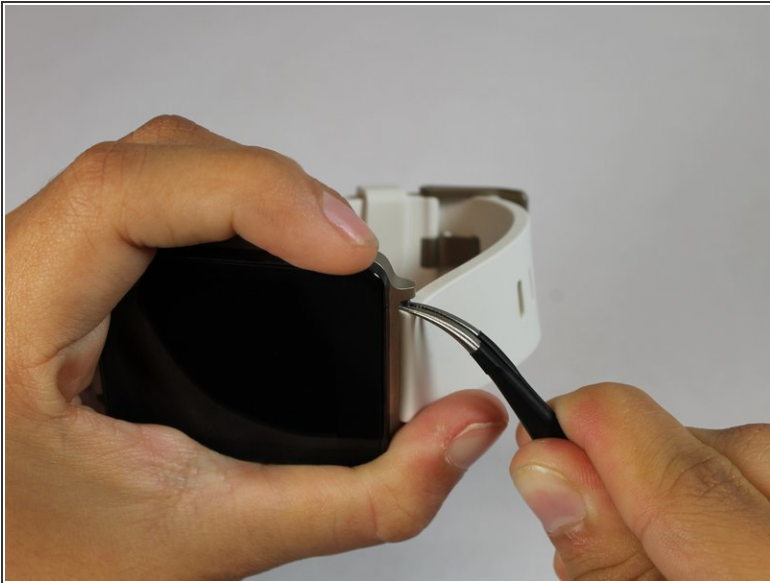
- [T5 Torx Screwdriver](#) (1)
 - [iFixit Opening Picks set of 6](#) (1)
 - [Tweezers](#) (1)
-



Step 1 — Wristband



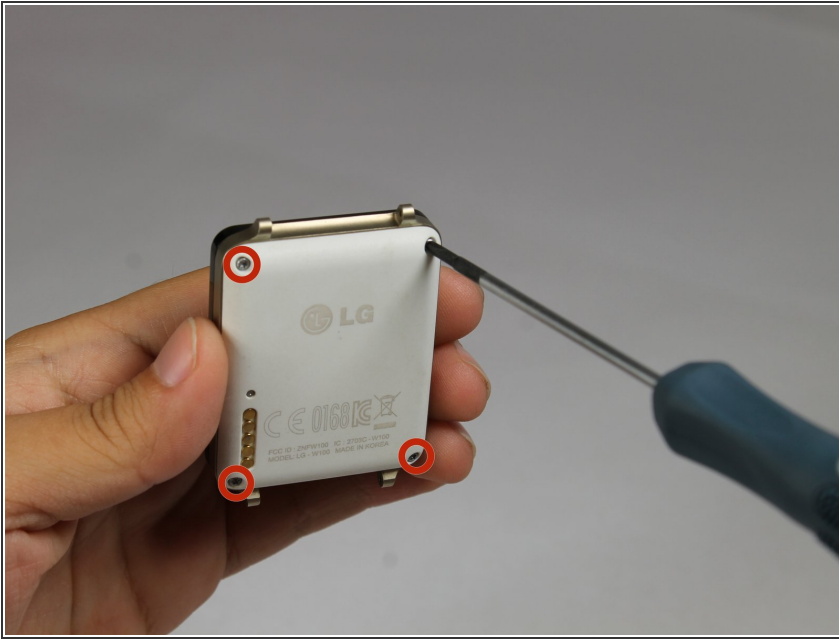
- ⓘ Spring bars attach the two halves of the wristband to the watch body. The spring bar has a shoulder on either end.
- ⓘ Be prepared to apply some pressure with your fingers to perform the following action.
 - First, slide the wristband down on the spring bar to expose the shoulder of the spring bar.
 - Grasp the exposed shoulder with the tweezers to perform the next step.

Step 2



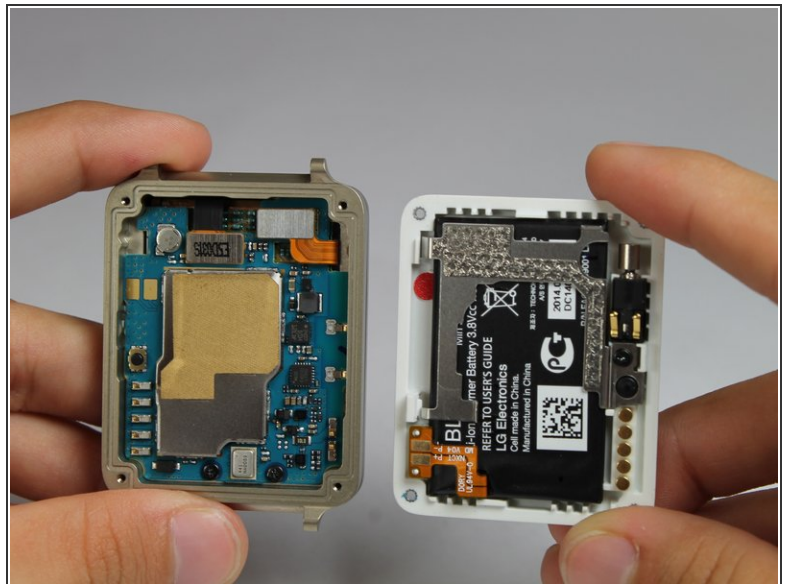
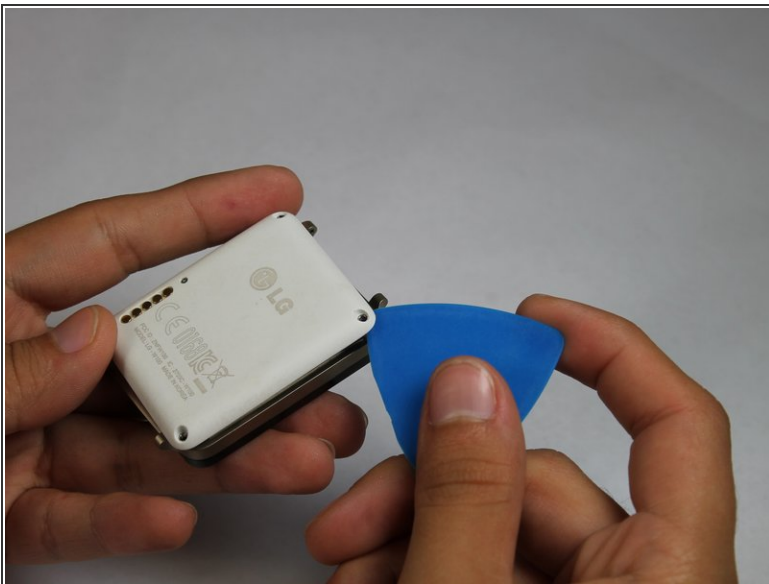
-  This is a challenging step. Do it carefully to prevent the spring bar from flying out of the wristband.
- Use the tweezers to depress the spring bar so that it collapses by a few millimeters and pops out of the hole that was holding it in place.
 - Now carefully pull the other end of the spring bar to detach the wristband from the watch face.
-  Repeat steps 1 and 2 for the other wristband.

Step 3 — Rear Case



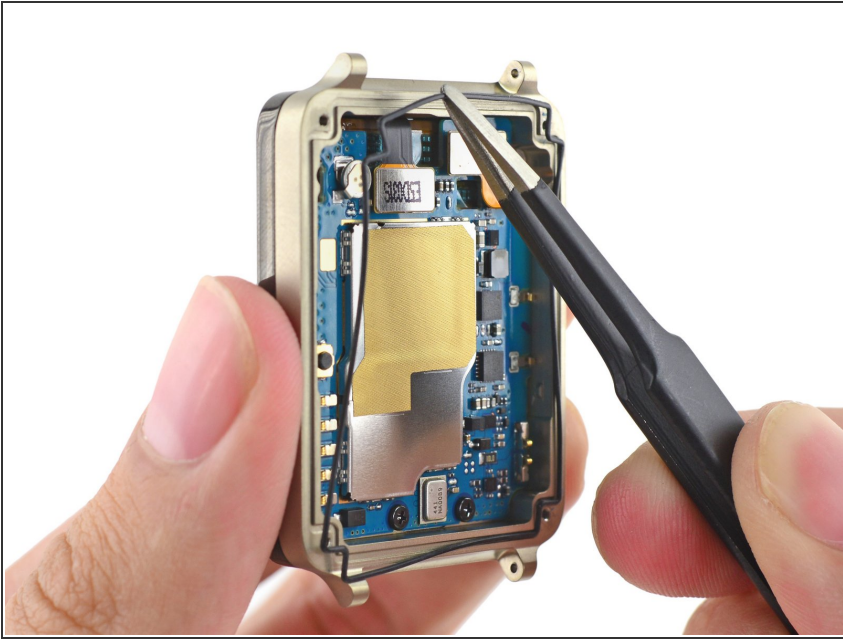
- Use the T5 Torx screwdriver to unscrew the four silver 2mm x 3mm T5 screws that hold the back cover in place.

Step 4



- Slide the opening pick between the rear case and the rest of the device to separate the two halves.
- Gently pull the two halves apart.

Step 5 — Gasket



- Use a pair of tweezers to remove the gasket that lies embedded in a groove that runs around the perimeter of the front half.

To reassemble your device, follow these instructions in reverse order.