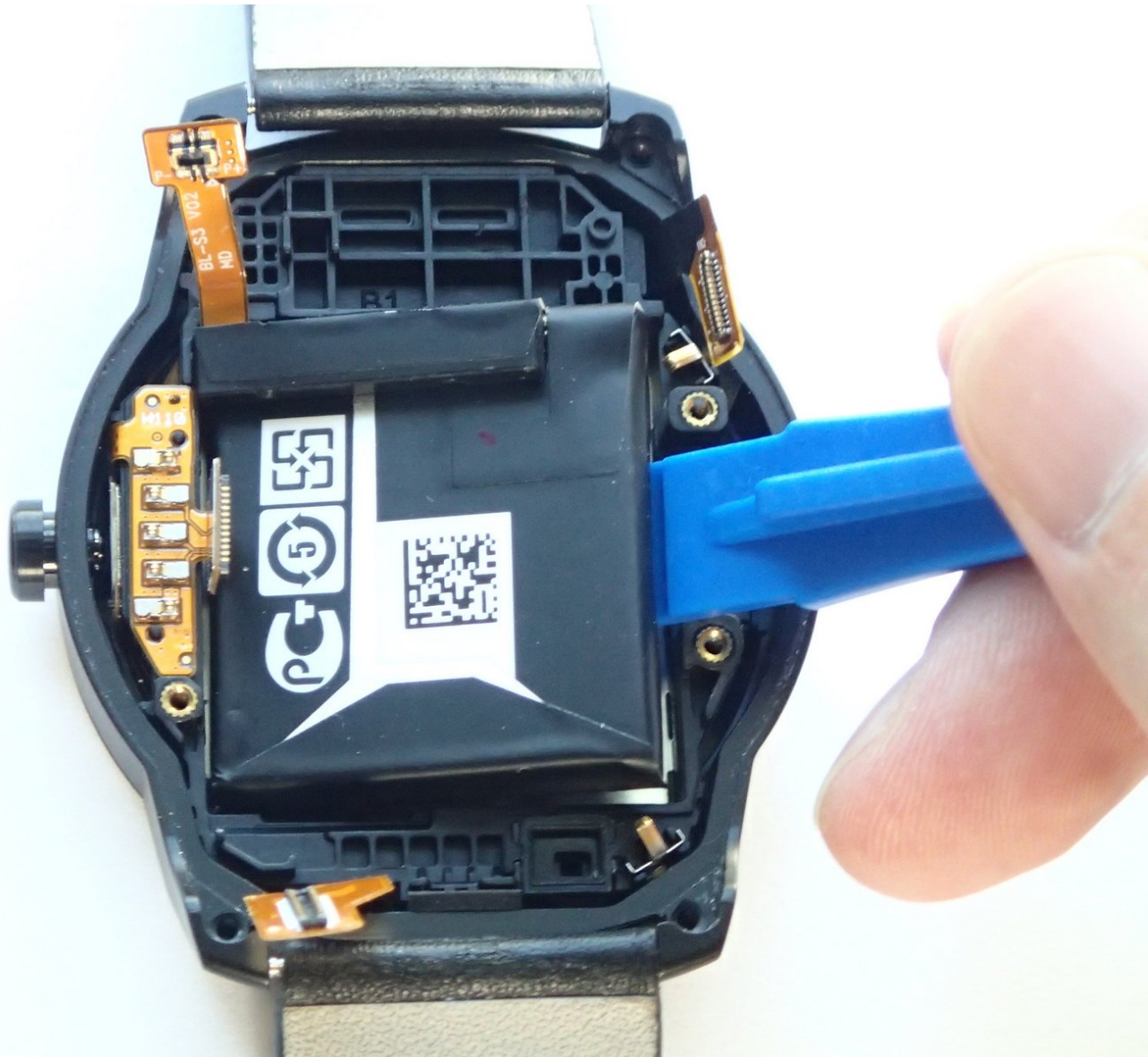




LG G Watch R Battery Replacement

This guide will help you replace the watch's battery should you ever need a new power source.

Written By: Westley Courchene



INTRODUCTION

The battery can be used to hold a charge that powers the watch for a period of time.




TOOLS:

- [iFixit Opening Tools](#) (1)
 - [T4 Torx Screwdriver](#) (1)
 - [Phillips #00 Screwdriver](#) (1)
-

Step 1 — Back Case



 Power off your watch before disassembling it.

- Place the watch upside down on a hard surface so that its back case is facing upright.
- Use a T4 Torx Star screwdriver to remove the four 4.0 mm Torx screws from the corners of the back case.

Step 2



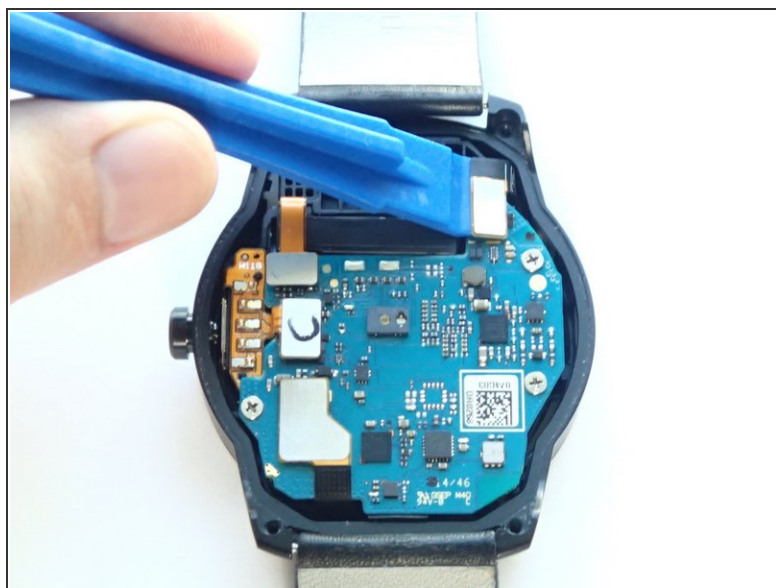
- Use a plastic opening tool to pry open the back case from both sides of the watch.

Step 3



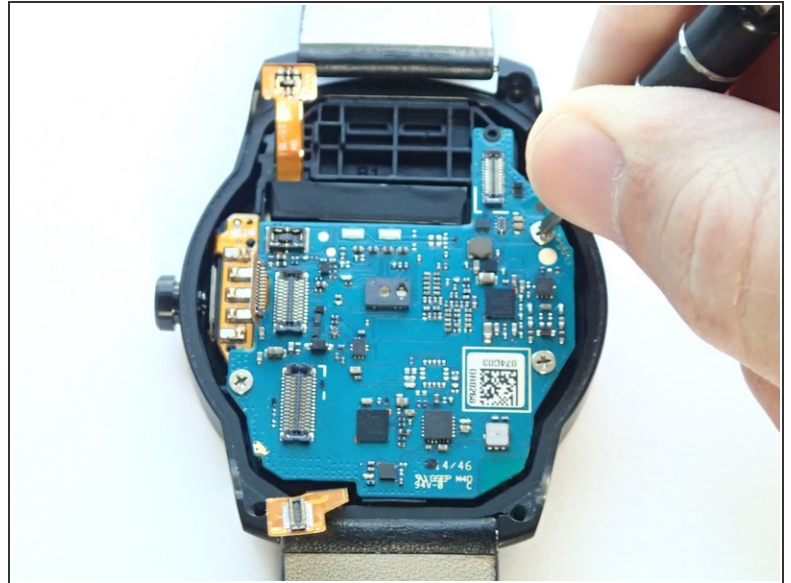
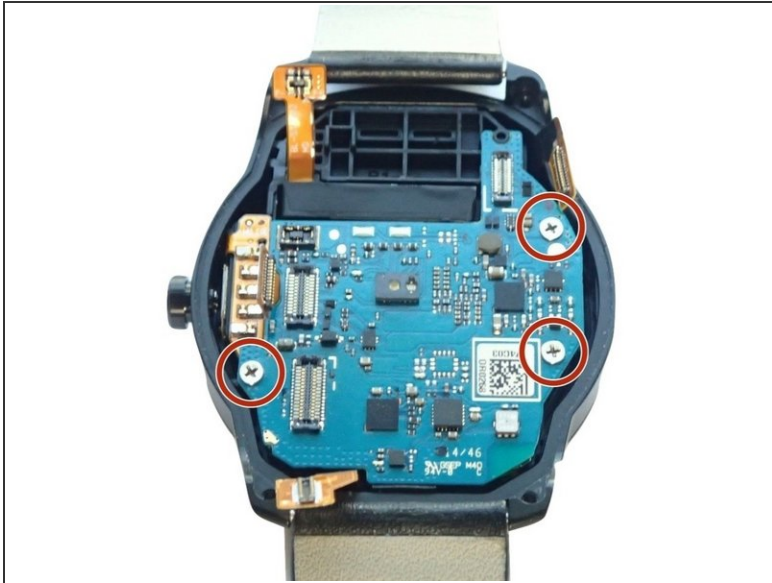
- Remove the back case.

Step 4 — Motherboard



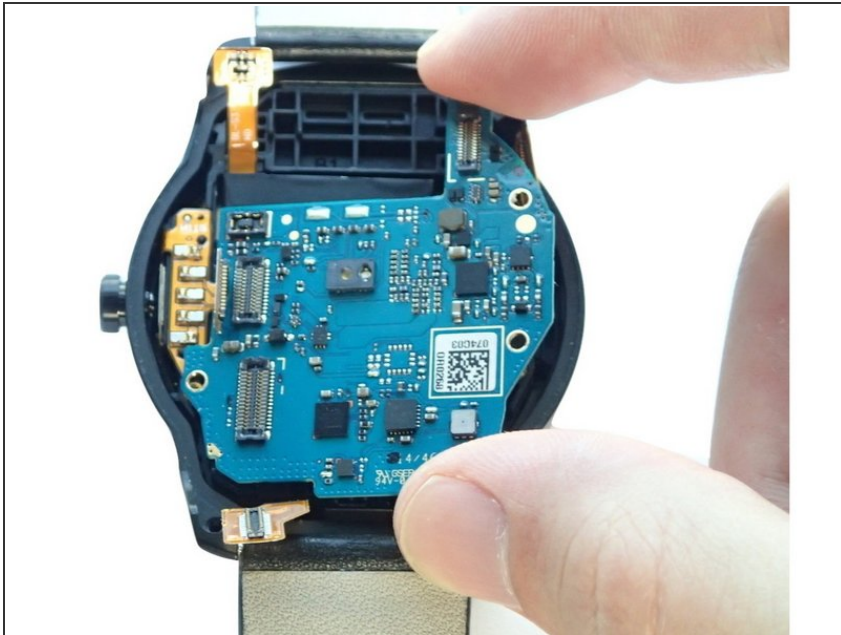
- With a plastic opening tool, disconnect the four connectors on the top of the motherboard.

Step 5



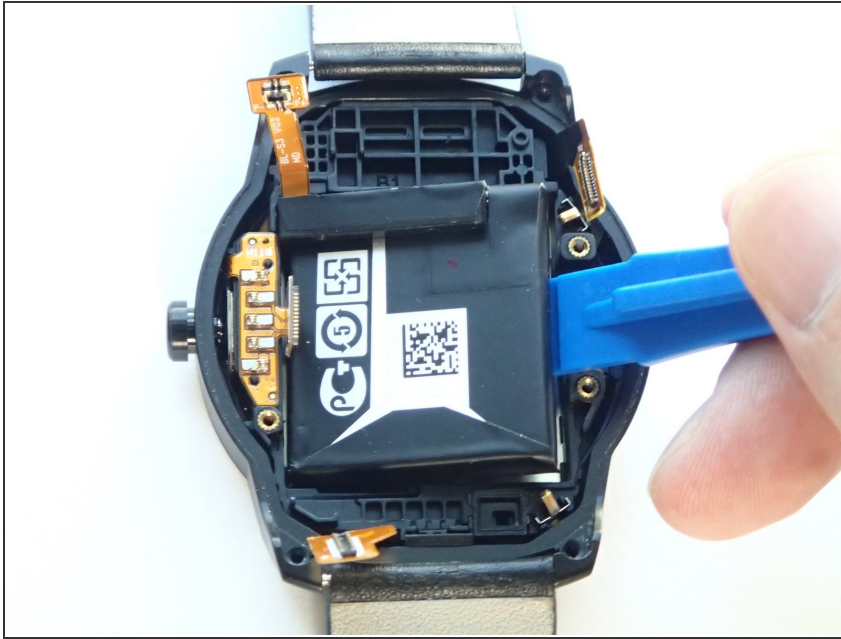
- Remove three 3.0 mm Phillips screws on the edges of the motherboard with a Phillips #000 screwdriver.

Step 6



- Grasp the edges of the motherboard and slide it slightly towards the right to remove it from its case.

Step 7 — Battery Replacement



- Use a plastic opening tool to pry the battery out of the device.
- ⓘ You may need to use a stronger prying force due to the adhesive that secures the battery to the case.

To reassemble your device, follow these instructions in reverse order.