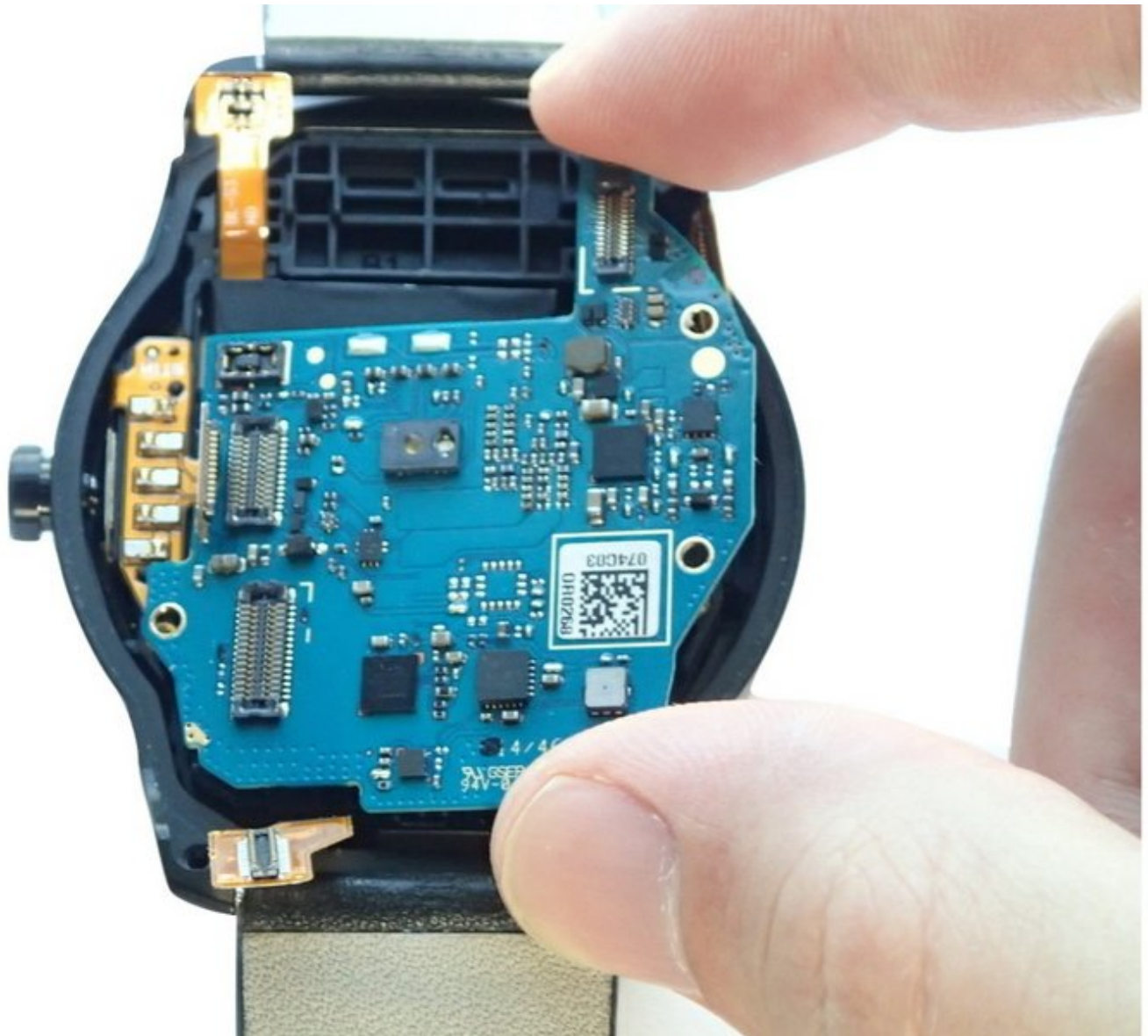




# LG G Watch R Motherboard Replacement

Use this guide to replace the motherboard (or primary circuit board) in your LG G Watch R.

Written By: Westley Courchene



## INTRODUCTION

In this guide, you'll disconnect all components in order to replace a faulty or damaged motherboard in your LG G Watch R. Motherboard failure will typically stop your watch from working or even turning on. However, the motherboard is usually the most expensive part of the device to replace—so check the [troubleshooting page](#) to rule out other factors before replacing the motherboard. Since your data is stored on a chip on the motherboard, be aware that replacing the board will cause you to lose any saved data.


---

### TOOLS:

- [iFixit Opening Tools](#) (1)
  - [Phillips #00 Screwdriver](#) (1)
  - [T5 Torx Screwdriver](#) (1)
-

## Step 1 — Back Case



 Power off your watch before disassembling it.

- Place the watch upside down on a hard surface so that its back case is facing upright.
- Use a T4 Torx Star screwdriver to remove the four 4.0 mm Torx screws from the corners of the back case.

## Step 2



- Use a plastic opening tool to pry open the back case from both sides of the watch.

### Step 3



- Remove the back case.

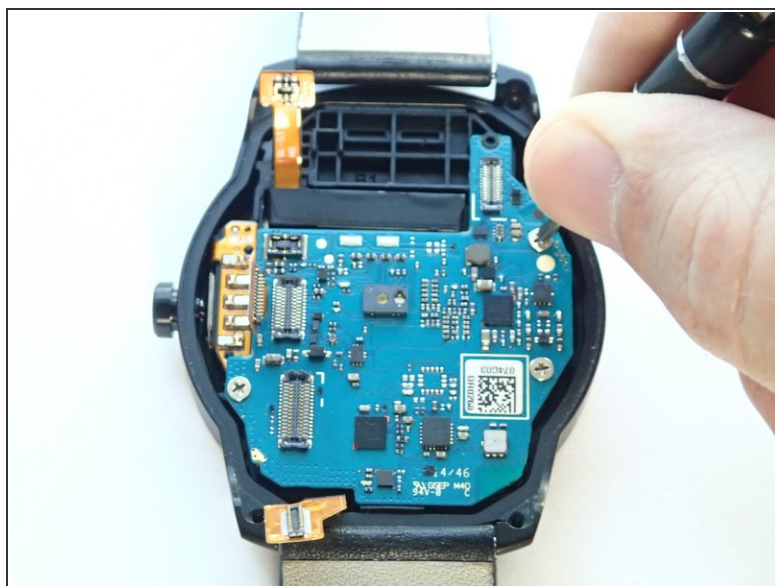
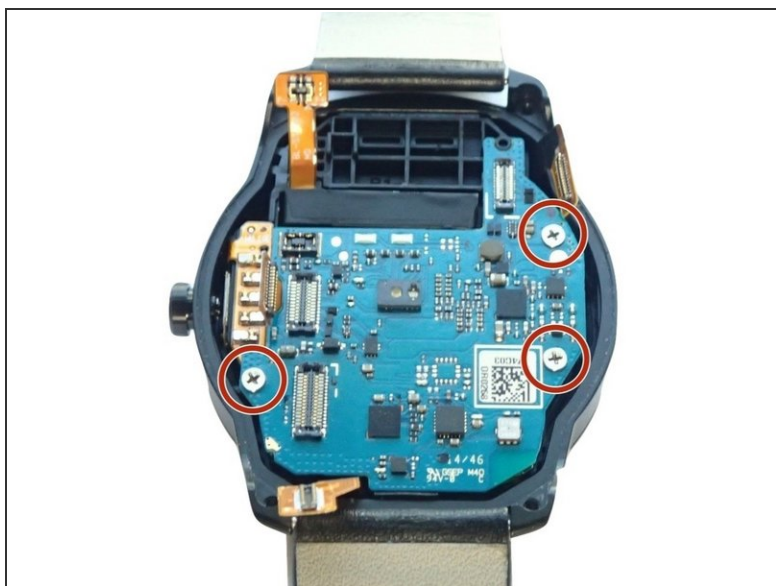
### Step 4 — Motherboard



- With a plastic opening tool, disconnect the four connectors on the top of the motherboard.

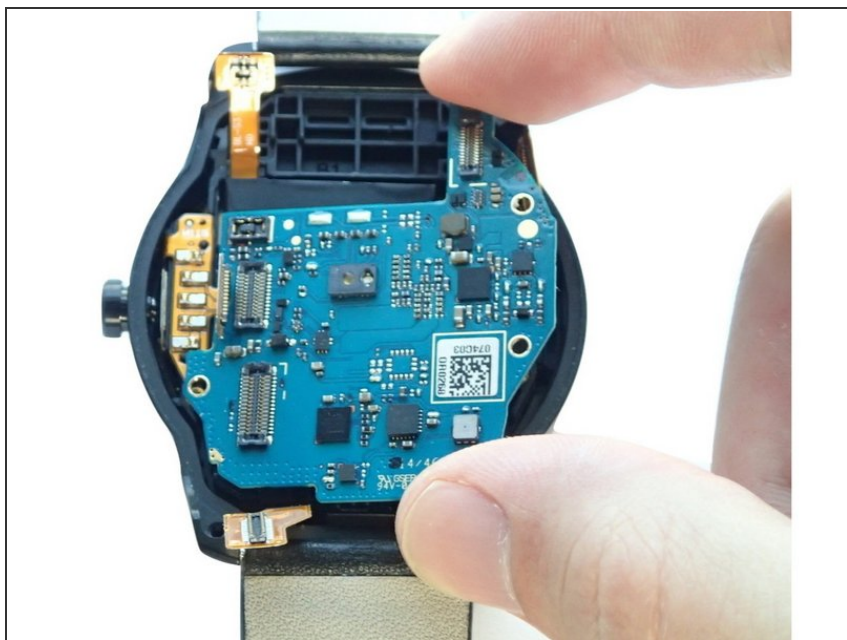


## Step 5



- Remove three 3.0 mm Phillips screws on the edges of the motherboard with a Phillips #000 screwdriver.

## Step 6



- Grasp the edges of the motherboard and slide it slightly towards the right to remove it from its case.

To reassemble your device, follow these instructions in reverse order.

This document was generated on 2019-09-23 04:33:29 AM (MST).

