



LG G2 Teardown

LG G2 Teardown

Written By: slimchance2001



INTRODUCTION

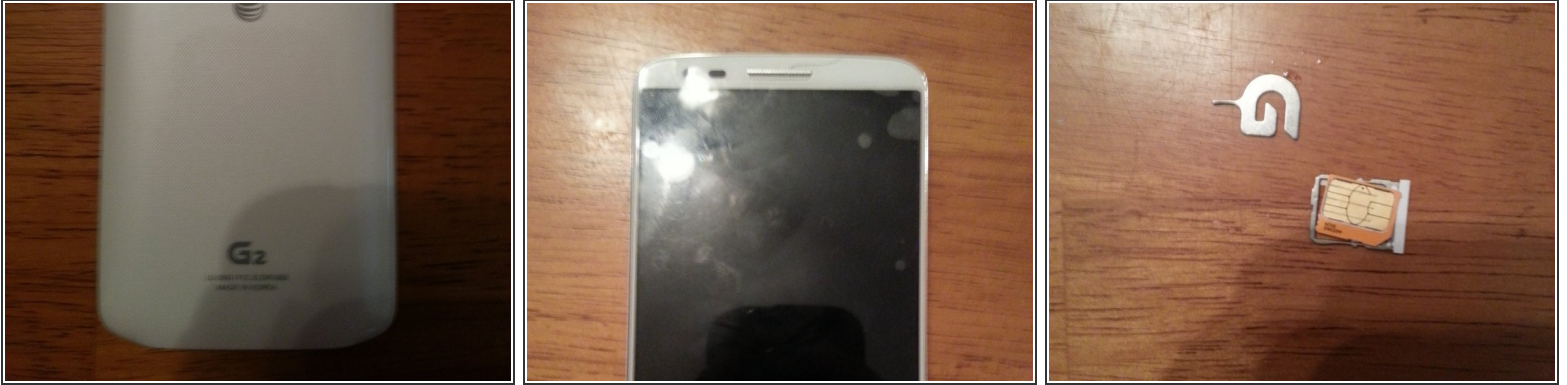
Like a lot of LG devices I wasn't able to find a teardown guide for general knowledge, and if i needed to replace something. I decided to use my personal LG G2 (D800) and make a quick teardown like the one I made for the LG Nitro (P930) on the XDA forums.



TOOLS:

- [Phillips #00 Screwdriver](#) (1)
 - [iFixit Opening Tools](#) (1)
 - [iFixit Opening Picks set of 6](#) (1)
-

Step 1 — LG G2 Teardown



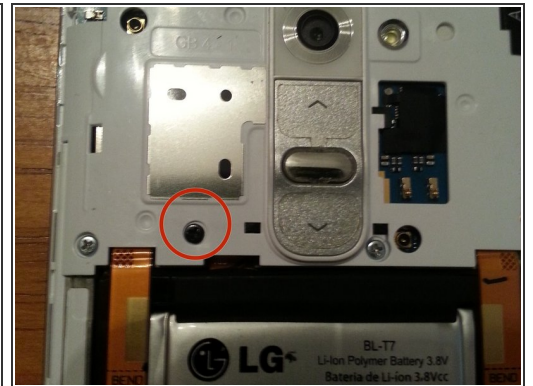
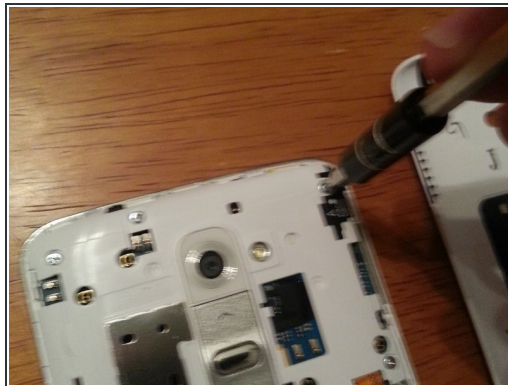
- Well how about removing the SIM tray...it's the little teardown victories
- Now peering into the SIM tray slot at an angle you can kinda see the back is separate from the metal bezel

Step 2



- Starting from the bottom corner, use the thin blunt side of a Spudger to separate the back from the metal bezel. **THIS CAN CAUSE COSMETIC & INTERNAL DAMAGE** if you are not careful.
- Use a thumb nail, plastic spudger, or pry tool to raise one side releasing the plastic clips. Then raise the other side and the top should pull off with ease.
- ⓘ During reassembly the back may fight a little to go back on. Start from the side and go around do not be afraid to pinch it with a little muscle.

Step 3



- Use a Phillips #00 screwdriver remove all visible screws.
- ⓘ The screw circled in red is different from the others.

Step 4



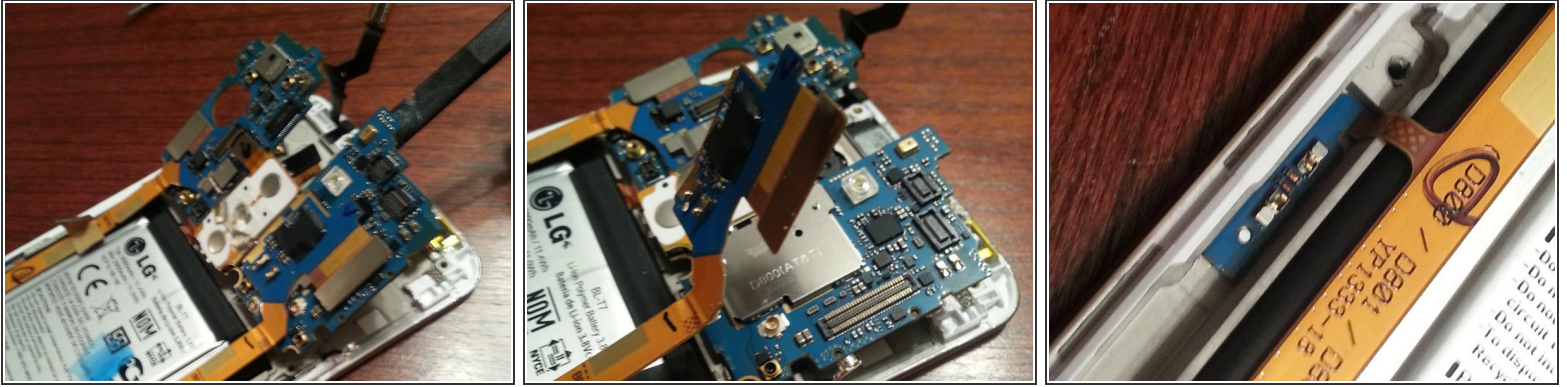
- Use a thumb nail or plastic prying tool to pop off the black plastic shield on the bottom.
- Do the same thing to remove the white plastic shield around the top of the device.
- ⓘ The upper shield (nearest the camera and volume buttons) is required to be firmly in place for sound to work. Alcohol cleaning the gold fingers on the motherboard and contact pads on the shield and then tightening the screws may fix sound issues.

Step 5



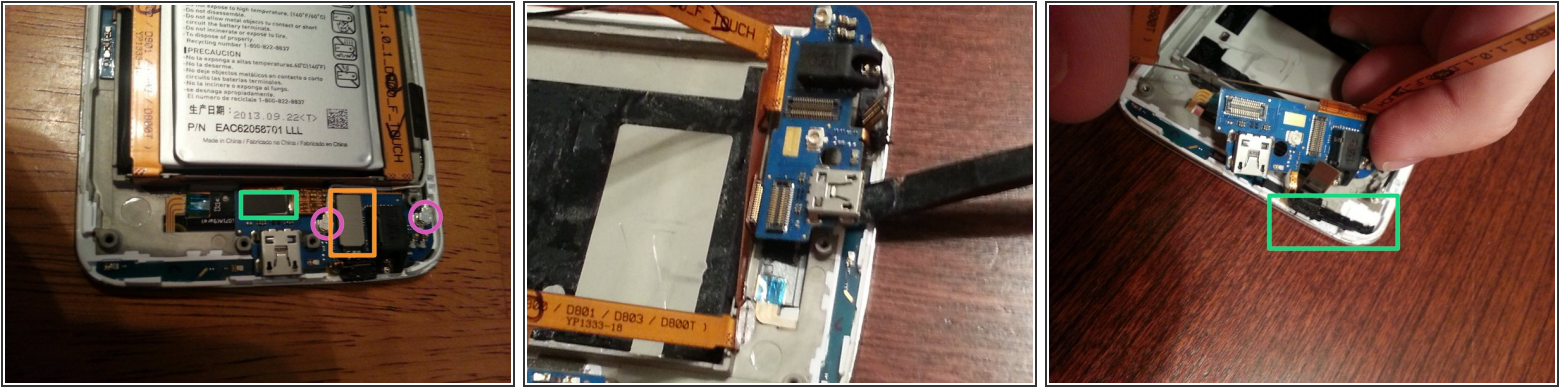
- With the logic board exposed using a plastic pry tool unhook the flex cable clips and the 2 antennas.
 - Start with the battery connector.
 - Camera & Volume keys
 - Front camera & Prox. Sensor/LED
 - Digitizer
 - 2 antenna wires (NOTE: these antenna and flex connectors are heavy duty.)
 - 2 flex cables joining the bottom board to the logic board

Step 6



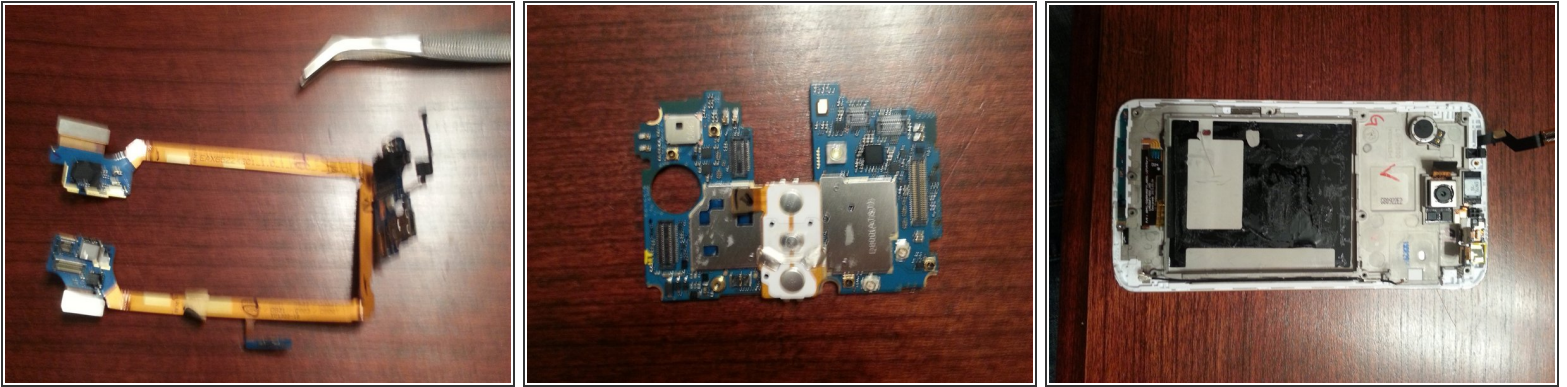
- The flex cable running up the right side of the battery is connected to a smaller board, which is held to an EMI shield on the logic board with a small amount of adhesive; it can be carefully pried up.
- The same thing can be done to the other side. Peel up the tape holding the flex cables down remembering where they went.
- ⓘ Pay attention to the side tab on the left flex cable. This piece can be peeled up the same way. Do not be afraid to bend it a little (BEND DO NOT BREAK).

Step 7



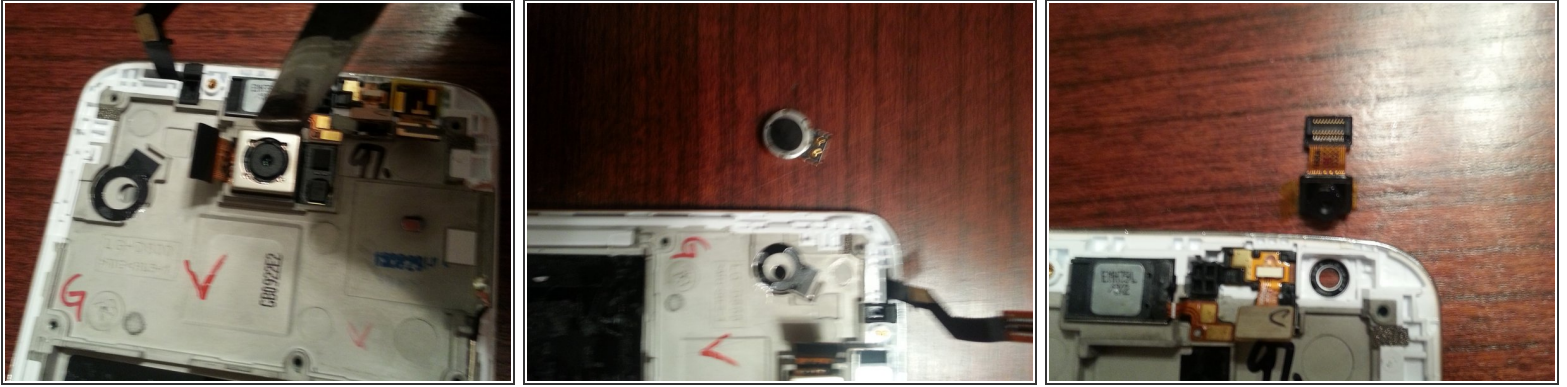
- At the other end, 2 big flex cables are brought together by a small control board. Disconnect the 2 clips (Green - LCD and Orange - Digitizer) and the other ends of the antennas. Then remove the antenna wires completely.
- This small control board is also held down by a little adhesive, but can be carefully pried up.
- ❗ In the third picture, marked in the Green square, is a piece of plastic that is attached to the board. It is better to just pry it up with the board than disconnect it.

Step 8



- We should now have removed the 2 big flex cables attached to their respective mutual boards, the 2 antenna wires and the main logic board.
- We can now start the process of removing the battery. Using a flat plastic pry tool, pry up the edges of the battery and work your way to the middle from all sides.
 - ⚠ Be careful to not bend the battery too much. Another method is using two long thin, flat plastic pry tools to "cut" the adhesive, and pry between the battery and body of the phone starting at the USB end. Do not risk a lithium fire by poking a hole in the battery!
 - ℹ When reassembling, you could use a counter top or something flat to flatten the battery back out.
- The third pic is what we should have after the battery is removed.

Step 9



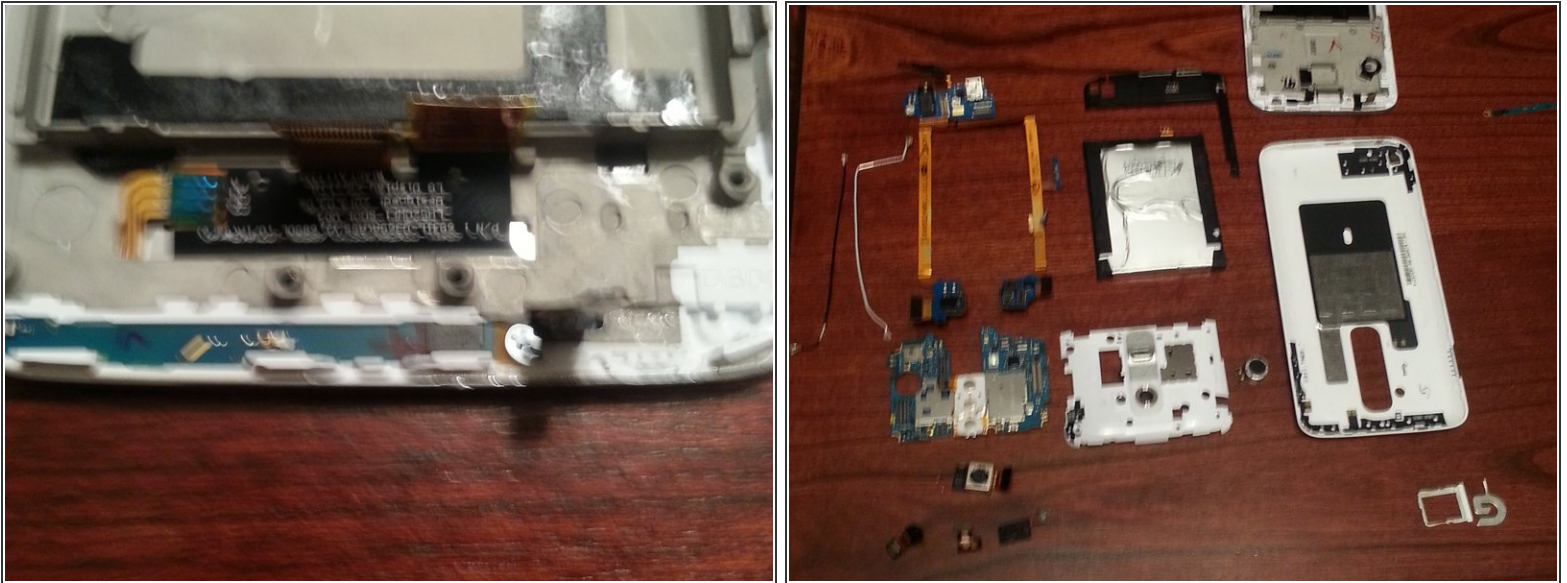
- We can now remove the rest of the components: rear camera, vibration motor, and the front camera.
- ① Removing the front camera is somewhat difficult. Use a thin spudger to pry up the top, and pull it out. The other parts are easily removed since they have a little bit of adhesive.

Step 10



- Components cont'd: prox. sensor/ LED, ear speaker.
- ① The ear speaker may need some pry work because it is held in with a phone gasket. The +/- flex to the speaker is flimsy, but must go back to its precise place when reassembled. If the +/- connectors don't connect right the speaker will not work.

Step 11



- At the bottom of the phone is another very small board almost like a piece of metal tape. It's held down by a small screw. Remove the screw, and peel up the piece. I'm 99% sure it's strictly for grounding purposes, but none the less is still important.
- TIP: When prying up circuit, logic boards, or small pieces like this it's best to start where a screw was removed, because often the area is reinforced and protected.
- You should now have just the screen assembly. I didn't remove the LCD or digitizer. I've found separate, and full screen assemblies on the web, but I've also read LG is making it quite affordable to repair the screen by sending it to them.
- As always here's a look at it all.
- For reassembly start from the very last step, and go back in order. REMEMBER fellow fixers, either repair or recycle.
- *i* Removing the screen requires a heat gun and a spudger. Follow the glass to where it meets the bezel and pry gently (start where the glass broke or along a long edge where there's <2mm adhesive strips); relative to other phones the G2 screen comes out relatively easily, but glued screen removal is potentially phone-destroying - be careful!

To reassemble your device, follow these instructions in reverse order.