



LG G3 Front Facing Camera Replacement

Replacing the rear-facing camera.

Written By: Naoto



INTRODUCTION

The front-facing camera may be causing problems due to either the ribbon cable not being connected properly or because the camera is broken. This guide should help you fix both problems.

TOOLS:

- [iFixit Opening Picks set of 6](#) (1)
 - [Spudger](#) (1)
 - [Phillips #00 Screwdriver](#) (1)
 - [iFixit Opening Tools](#) (1)
-

Step 1 — Back Cover



- ⓘ Power off your phone before beginning disassembly.
- Insert a thumbnail, or a prying tool like a spudger, into the notch at the bottom left of the back cover.
- Pry the back cover up to separate its plastic clips.

Step 2



- Lift the back cover to release the rest of the plastic clips and remove it.
- ❗ In case you can't lift the back cover completely, slide your fingernail or your prying tool around the midframe to release the remaining clips.
- 🔧 To reinstall the back cover, press it firmly into place until you hear a snap from the plastic clips to form a seamless connection with the rear side of the phone.

Step 3 — Battery



- Use a fingernail or a prying tool at the marked notch to lever the battery out of its recess.

Step 4



- Lift the battery out of its recess and remove it.

Step 5 — Loudspeaker



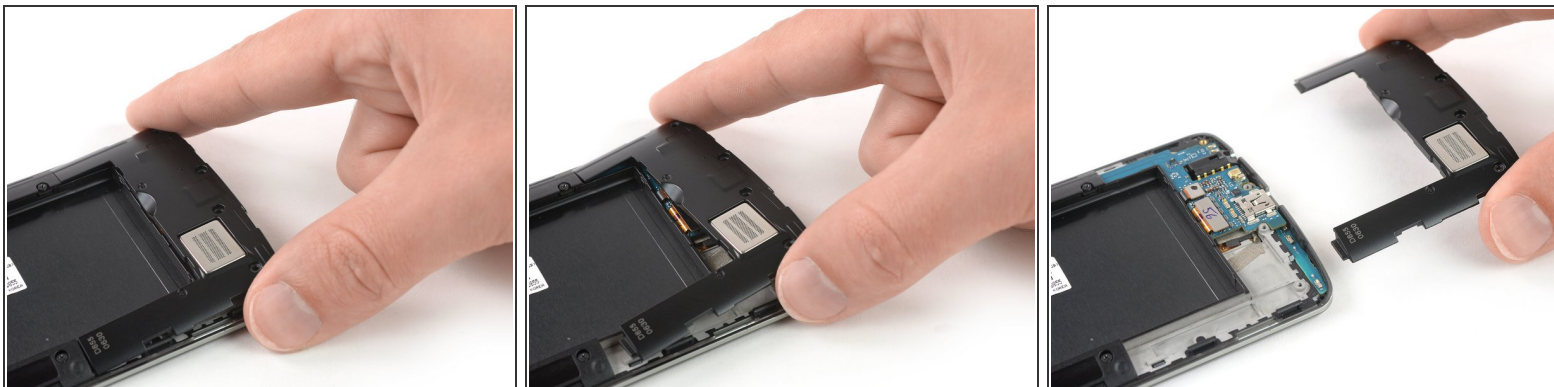
- Remove the four Phillips #00 screws (4 mm length).

Step 6



- Insert a thumbnail, or a prying tool like a spudger, into the notch at the bottom left of the back cover you used earlier to remove the back cover.
- Pry up the plastic panel, including the loudspeaker, until you can get a good grip.

Step 7



- Carefully remove the plastic panel including the loudspeaker by gently pulling it away from the phone assembly.

Step 8 — Motherboard Cover Assembly



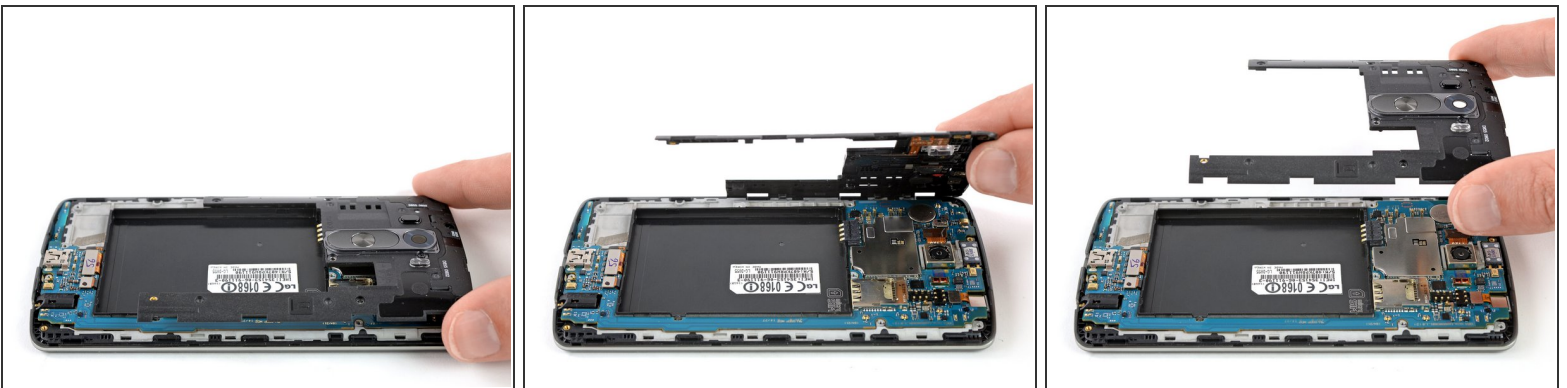
- Remove the eight Phillips #00 screws (4 mm length).

Step 9



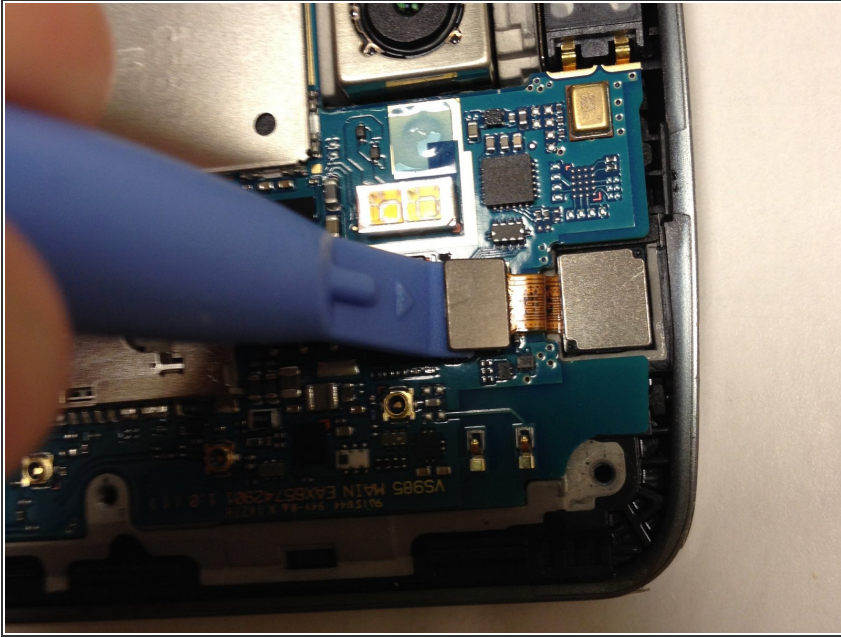
- Insert an opening pick between the bottom right corner of the motherboard cover and the motherboard.
- Pry up the motherboard cover to open the plastic clips which hold the cover in its place.
 - ❗ The clips can be a bit resistive. If you're having trouble prying up the motherboard cover, slightly rotate the opening pick sideways to make the process easier.
- Work your way along the right edge.

Step 10



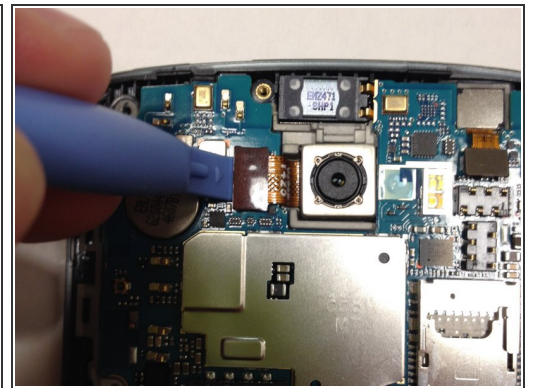
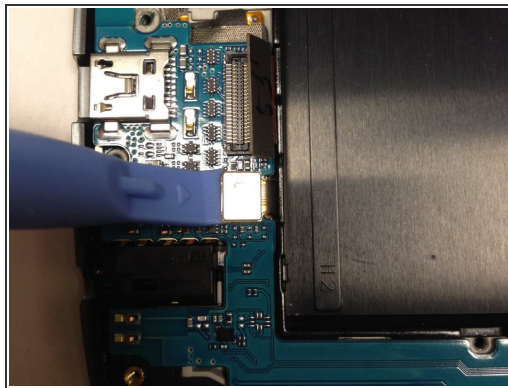
- Carefully lift the right edge of the motherboard cover.
 - ❗ The remaining plastic clips should open during this process or can be unhinged easily by hand.
- Remove the motherboard assembly.

Step 11 — Front Facing Camera



- Check to see that the ribbon cable is connected properly. If it was not, connect it and see if the front-facing camera now functions as intended. Otherwise, proceed
- Take the plastic opening tool and gently wedge it under where the ribbon cable is connected
- Gently lift up to disconnect the ribbon cable

Step 12



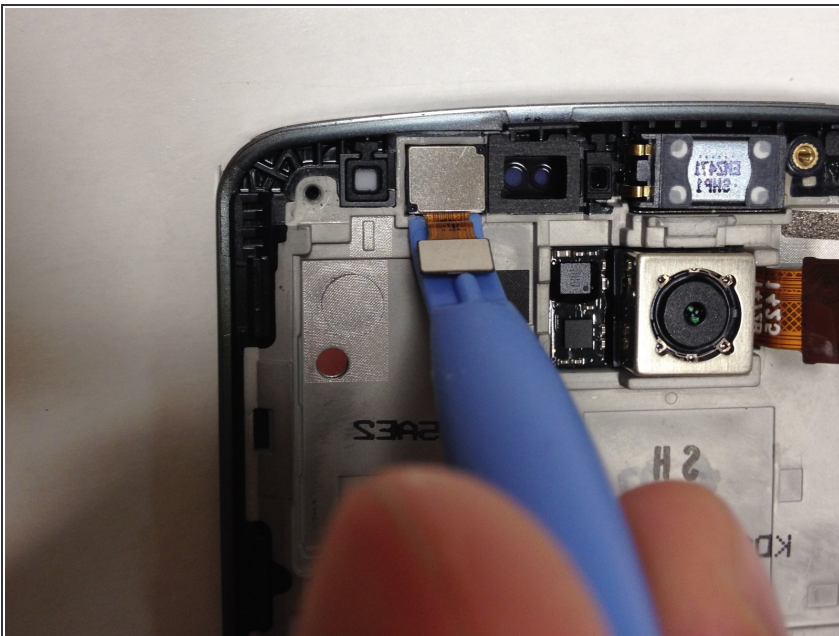
- Repeat the same process for the other 3 ribbon cables connected to the motherboard

Step 13



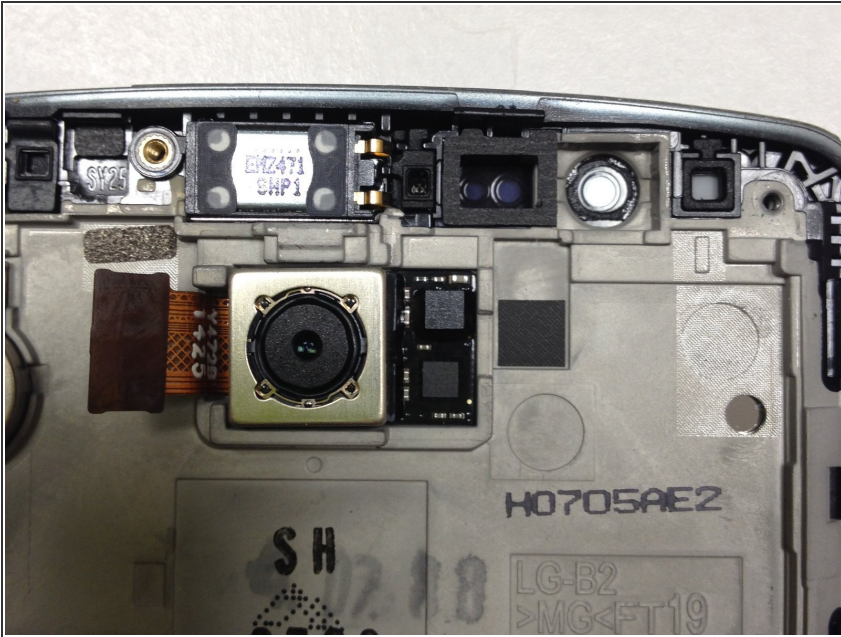
- Remove the motherboard by lifting gently
- ⓘ Take care not to damage the ribbon cables if the other components are functional. Damaging them may result in other components not working

Step 14



- Take the plastic opening tool and remove the front-facing camera by wedging it into the sides and under the ribbon cable and lifting up
- ⓘ The front-facing camera is kept in place with an adhesive, so it may take some time and effort to get it out. Depending on how much force you are using, it may also be launched across the room

Step 15



- Remove the old front-facing camera

To reassemble your device, follow these instructions in reverse order.