



LG G3 Rear Facing Camera Lens Cover Replacement

In this guide I will show you how to replace the back camera lens cover. It is actually glass and I broke mine quite easily.

Written By: Logan



INTRODUCTION

Use this guide to replace the rear facing camera lens cover.

[video: https://www.youtube.com/watch?v=tGjz_Jv0mE4]



TOOLS:

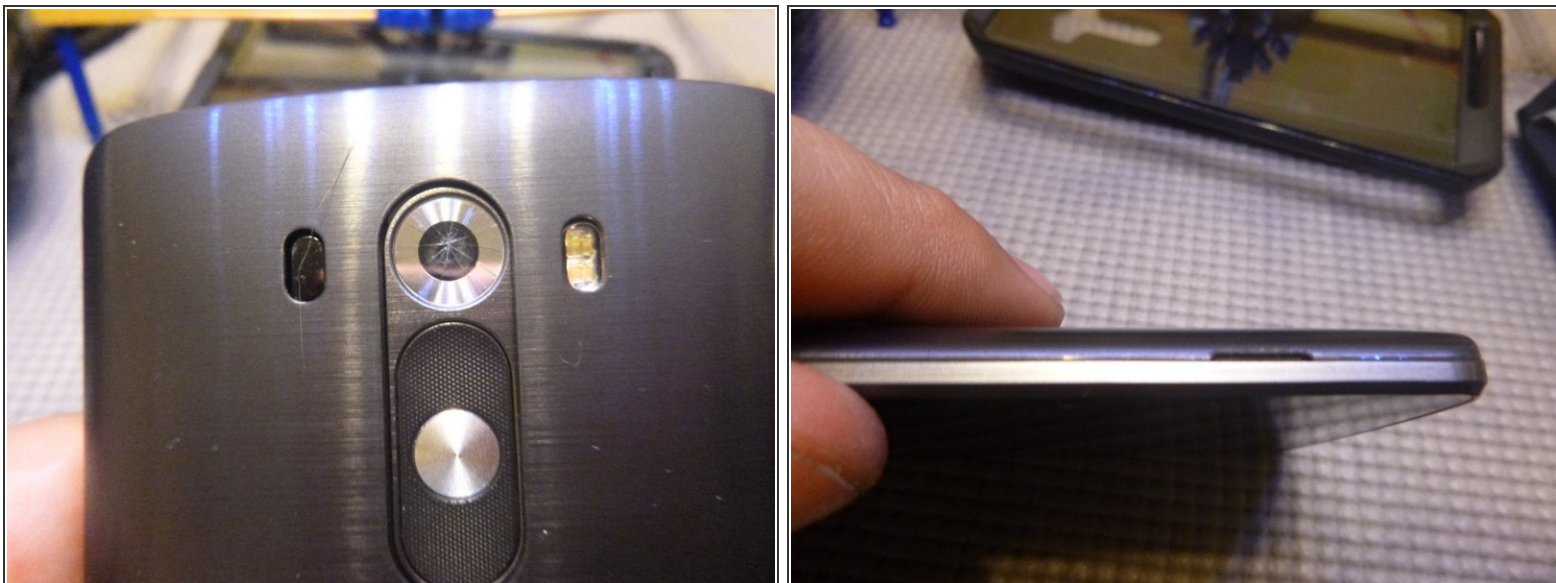
- [Phillips #00 Screwdriver](#) (1)
- [Fingers](#) (1)
- [Tweezers](#) (1)



PARTS:

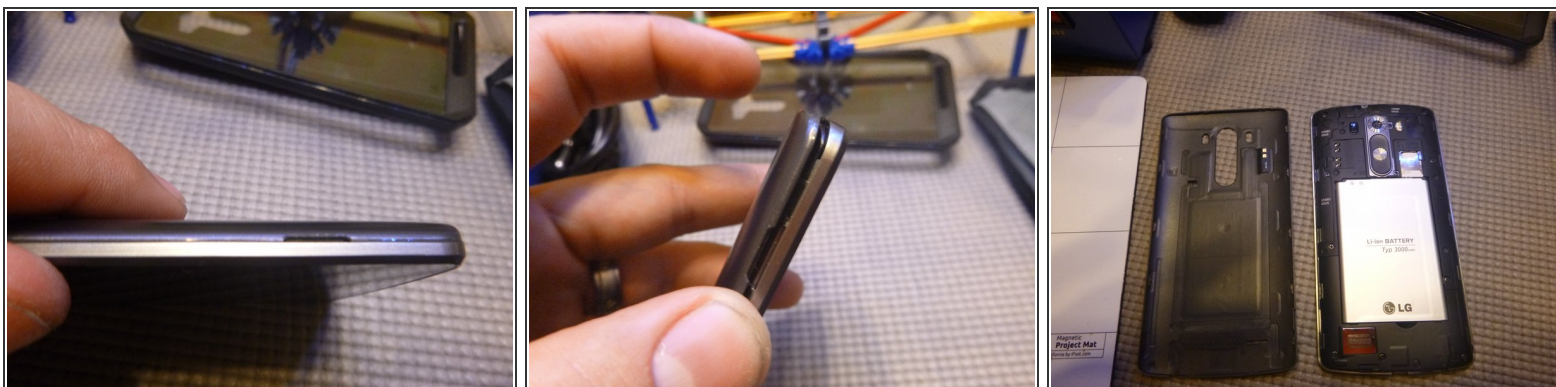
- [LG G3 Volume and Power Button Cover](#) (1)
- [LG G3 Rear Lens Cover and Bezel](#) (1)

Step 1 — The damage



- A nice big rugged case is all good and well but it can't protect everything

Step 2 — Remove the battery cover



- Locate the niche on the bottom right side of the phone.
- You can use your finger nail or a pry tool to pop open the battery cover.
- It is clipped on all around the phone. It shouldn't take too much force to open. It's quite easy to remove.

Step 3 — Remove camera lens cover



- Remove the two screws holding the camera lens cover on. Keep in mind they are two different sizes. Short one up top, longer one on bottom. Use a small phillips head screwdriver. (sorry for removing them before taking the pic)
- Remove the camera lens cover. I used my sharp pointed tweezers to pop the bottom of the cover up. It is also held in with small clips, much like the battery cover.
- Save the volume/power button from the old cover and reuse it with the new camera lens cover.

Step 4 — Put new camera cover in



- Clean the camera lens and the new camera lens cover. Put the new cover in. I put the left side in at an angle first and then popped the right side in to the clips. Don't use too much force or it could possibly break the plastic
- Put the battery cover back on and slap your phone back in it's case if you have one. Done!

To reassemble your device, follow these instructions in reverse order.