



# LG G3 Rear Facing Camera Replacement

Replacing the rear-facing camera.

Written By: Shannon



## INTRODUCTION

The rear-facing camera may be causing problems due to either the ribbon cable not being connected properly or because the camera is broken. This guide should help you fix both problems.



### TOOLS:

- [Spudger](#) (1)
- [iFixit Opening Picks set of 6](#) (1)
- [Phillips #00 Screwdriver](#) (1)
- [iFixit Opening Tools](#) (1)



### PARTS:

- [LG G3 Rear Facing Camera](#) (1)

## Step 1 — Back Cover



- ⓘ Power off your phone before beginning disassembly.
- Insert a thumbnail, or a prying tool like a spudger, into the notch at the bottom left of the back cover.
- Pry the back cover up to separate its plastic clips.

## Step 2



- Lift the back cover to release the rest of the plastic clips and remove it.
- ❗ In case you can't lift the back cover completely, slide your fingernail or your prying tool around the midframe to release the remaining clips.
- 🔧 To reinstall the back cover, press it firmly into place until you hear a snap from the plastic clips to form a seamless connection with the rear side of the phone.

## Step 3 — Battery



- Use a fingernail or a prying tool at the marked notch to lever the battery out of its recess.

## Step 4



- Lift the battery out of its recess and remove it.

## Step 5 — Loudspeaker



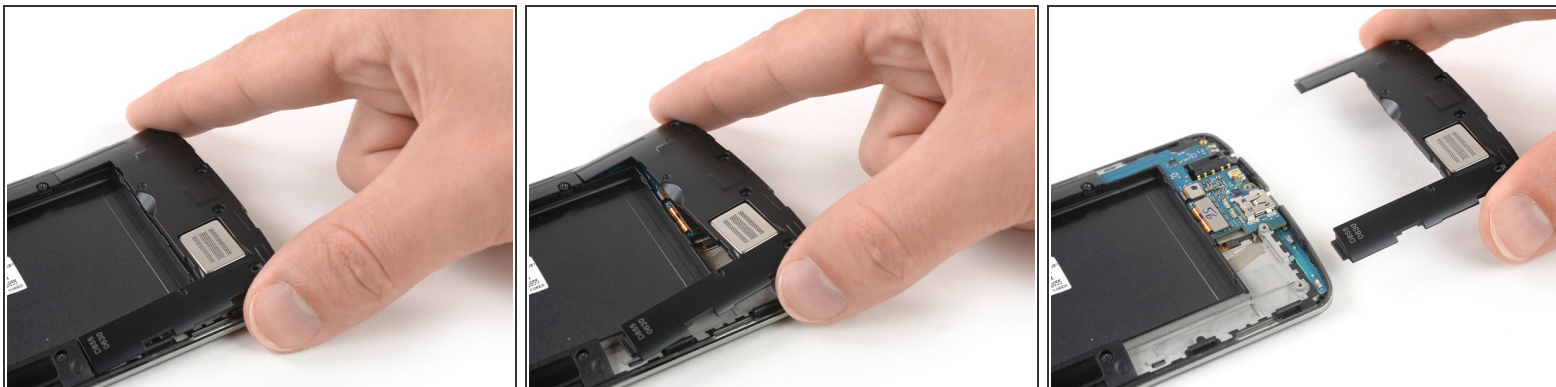
- Remove the four Phillips #00 screws (4 mm length).

## Step 6



- Insert a thumbnail, or a prying tool like a spudger, into the notch at the bottom left of the back cover you used earlier to remove the back cover.
- Pry up the plastic panel, including the loudspeaker, until you can get a good grip.

## Step 7



- Carefully remove the plastic panel including the loudspeaker by gently pulling it away from the phone assembly.

## Step 8 — Motherboard Cover Assembly



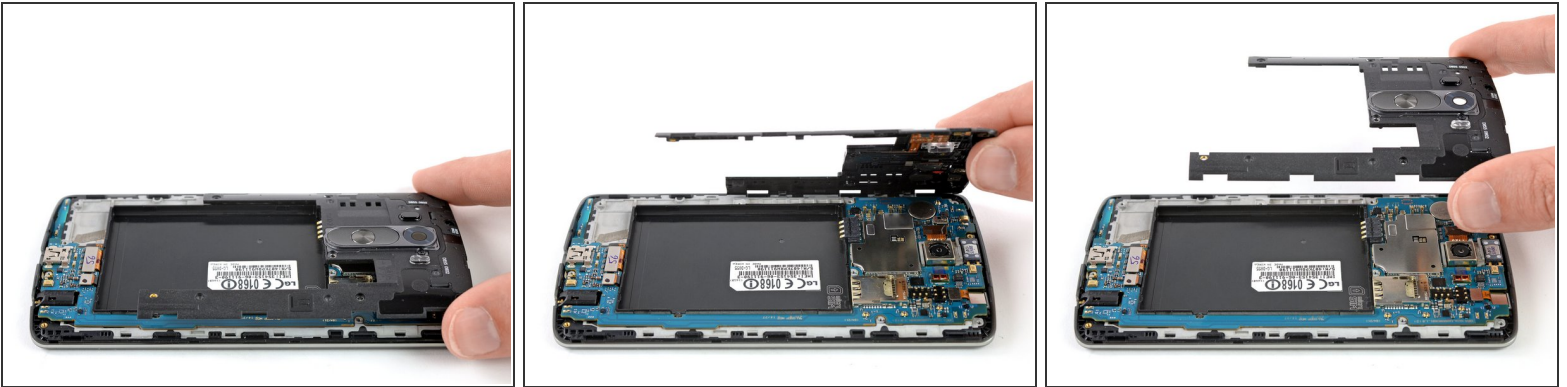
- Remove the eight Phillips #00 screws (4 mm length).

## Step 9



- Insert an opening pick between the bottom right corner of the motherboard cover and the motherboard.
- Pry up the motherboard cover to open the plastic clips which hold the cover in its place.
  - ❗ The clips can be a bit resistive. If you're having trouble prying up the motherboard cover, slightly rotate the opening pick sideways to make the process easier.
- Work your way along the right edge.

## Step 10



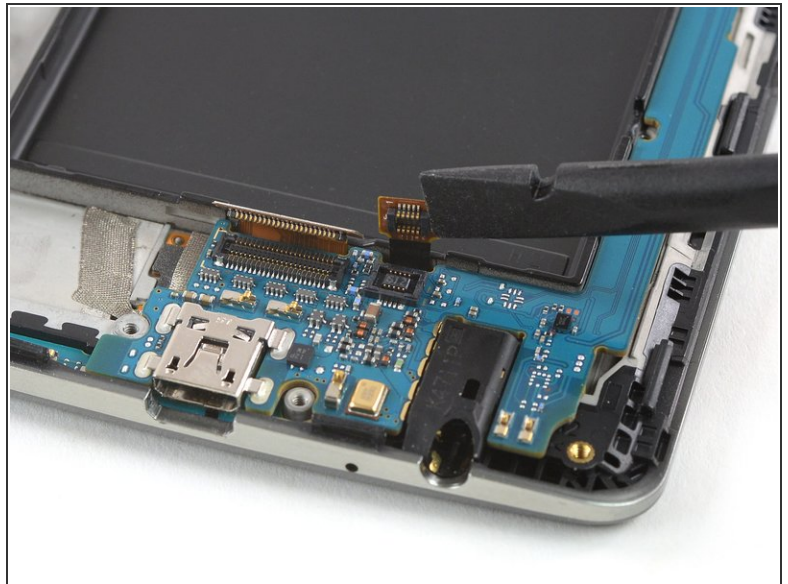
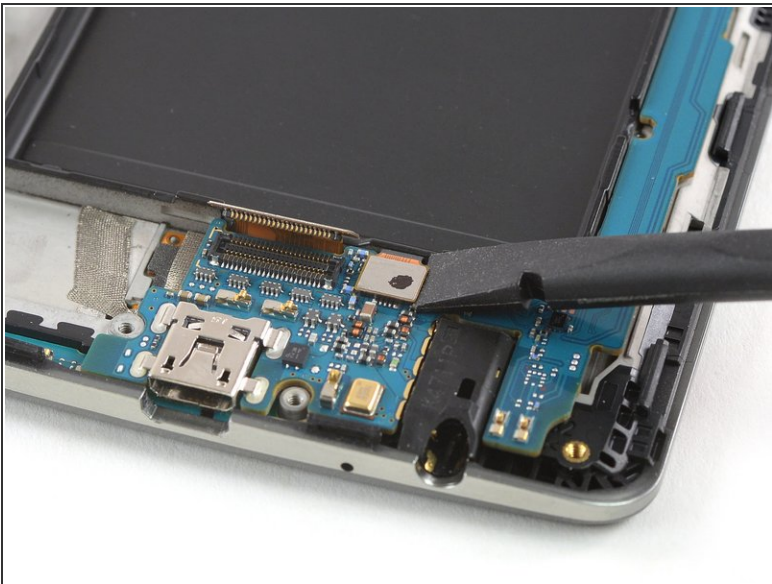
- Carefully lift the right edge of the motherboard cover.
  - ❗ The remaining plastic clips should open during this process or can be unhinged easily by hand.
- Remove the motherboard assembly.

## Step 11 — Motherboard



- Use a spudger to pry up and disconnect the display flex cable.

## Step 12



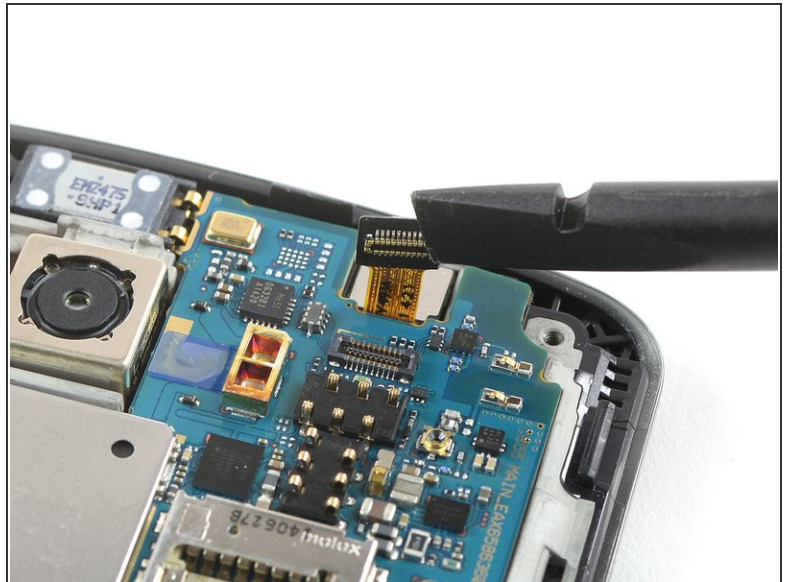
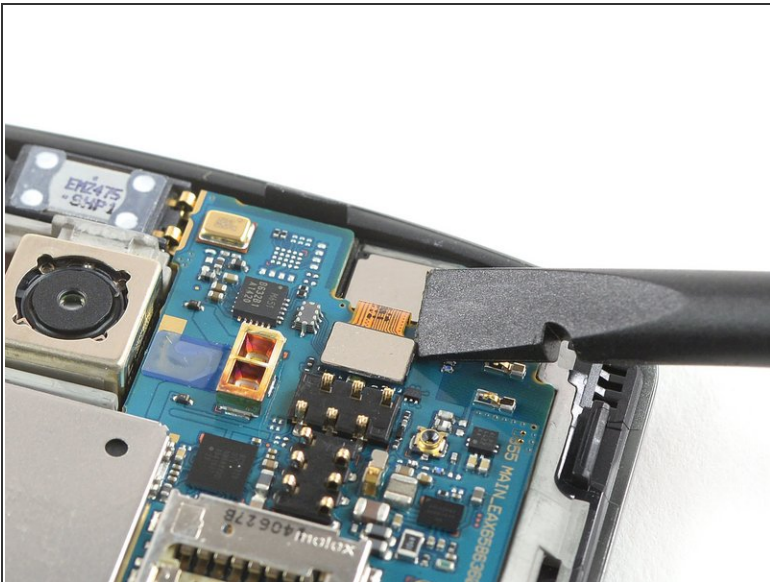
- Use a spudger to pry up and disconnect the digitizer flex cable.

## Step 13



- Use a spudger to pry up and disconnect the rear camera flex cable.


## Step 14



- Use a spudger to pry up and disconnect the front camera flex cable.

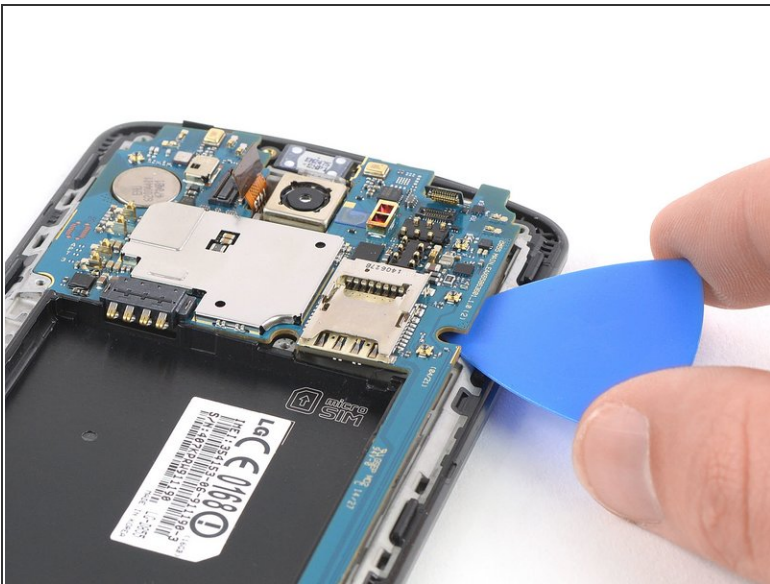
## Step 15



 During these next few steps, make sure to avoid damaging the flex cables you disconnected.

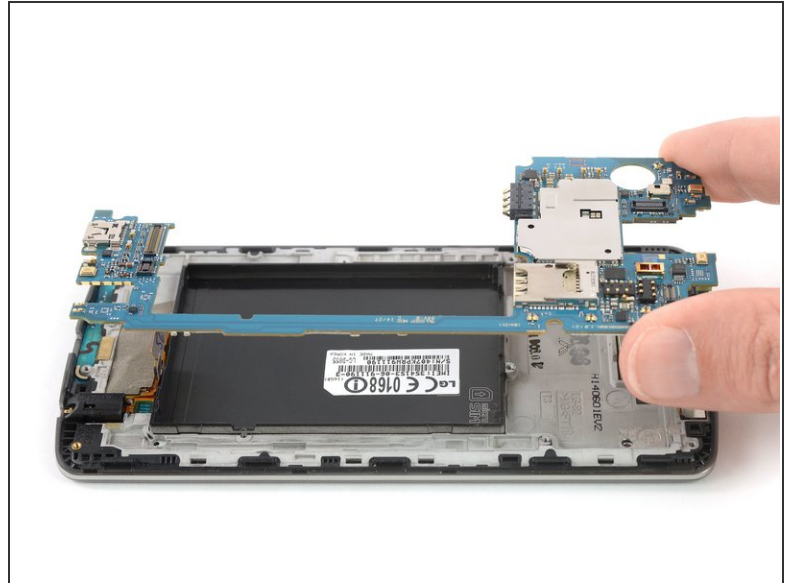
- Slide an opening pick under the bottom right corner of the motherboard and slowly pry it out of its recess by rotating the opening pick sideways.

## Step 16



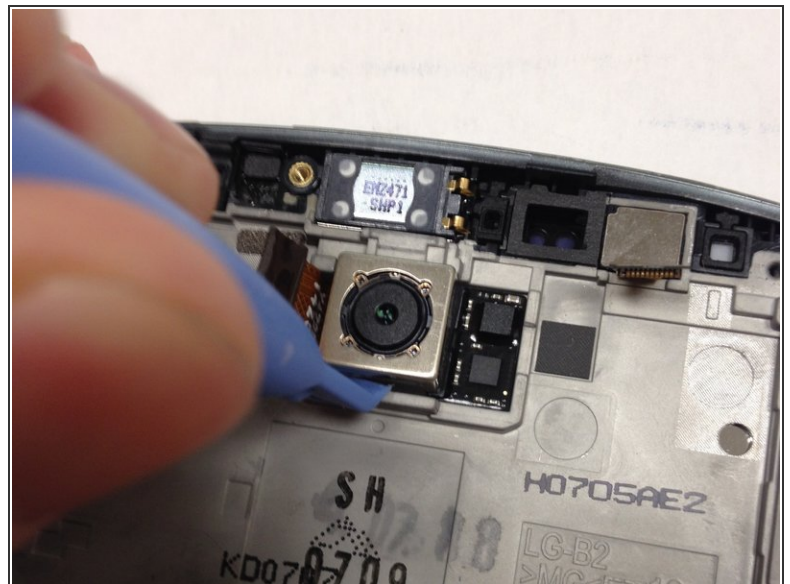
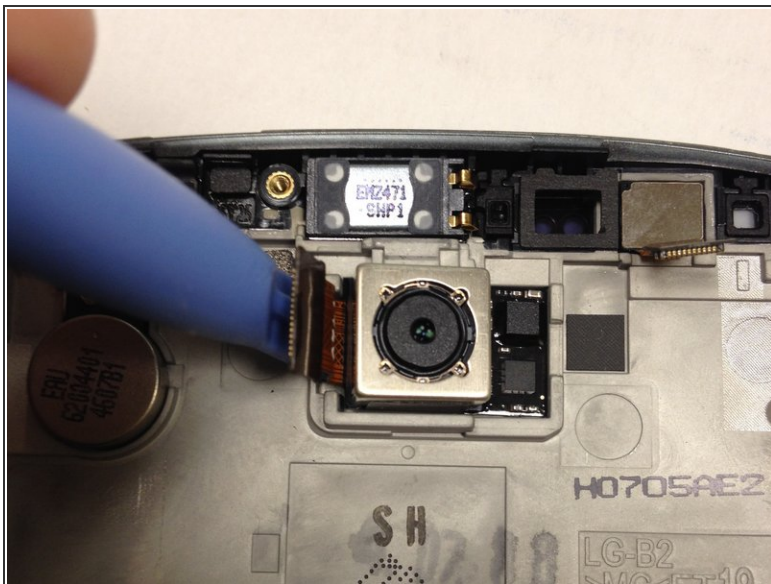
- Slide the opening pick under the right edge of the motherboard where the SIM card slot is located and pry it up by rotating the opening pick sideways.

## Step 17



- Grab the top section of the motherboard and carefully lift it out of the phone.

## Step 18 — Rear Facing Camera



- Take the plastic opening tool and remove the rear-facing camera by wedging it into the sides and lifting up
- ⓘ The rear-facing camera is kept in place with a double-sided tape, so it may take some time and effort to get it out. Attack it from all sides

This document was generated on 2020-01-20 06:03:26 AM (MST).

## Step 19



- Remove the old rear-facing camera

To reassemble your device, follow these instructions in reverse order.