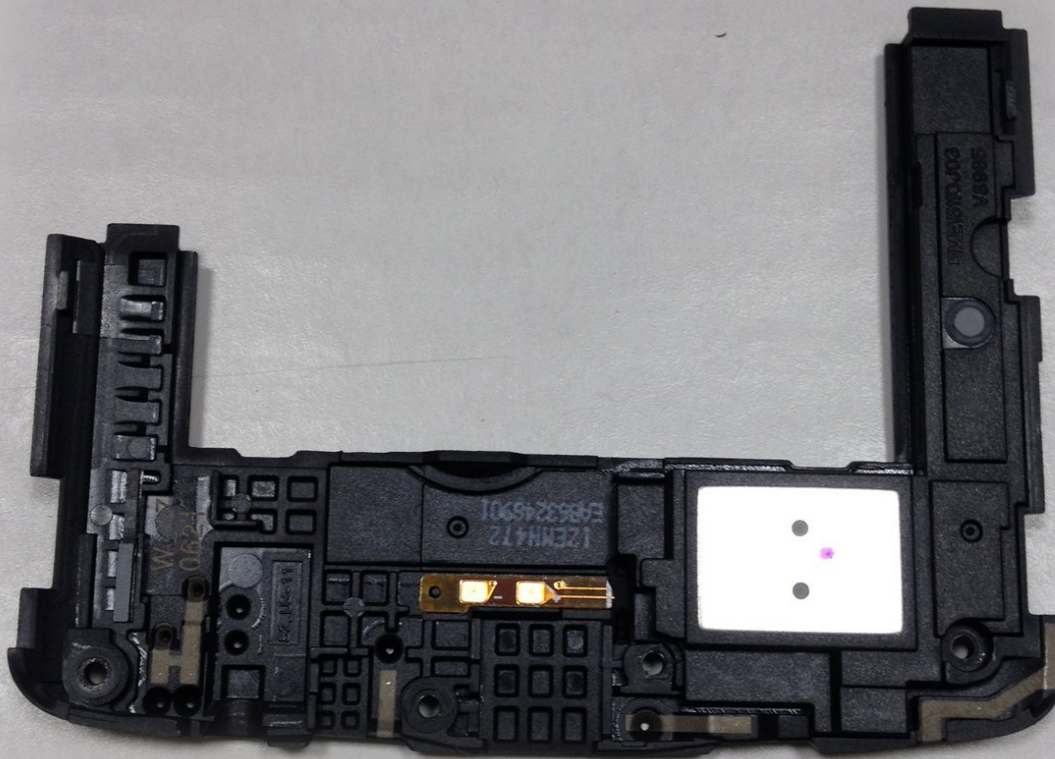




LG G3 Rear Speaker Replacement

Replacing the rear speaker on the LG G3.

Written By: Shannon



INTRODUCTION

The rear speaker is attached to the bottom panel of the LG G3, so to resolve any problems with the rear speaker, a full replacement of the bottom panel is necessary.

[video: <https://www.youtube.com/watch?v=07Z7Bm3i1l8>]



TOOLS:

- [Metal Spudger](#) (1)
- [Phillips #00 Screwdriver](#) (1)



PARTS:

- [LG G3 Speaker Assembly \(ATT\)](#) (1)
- [LG G3 Speaker Assembly \(T-Mobile\)](#) (1)
- [LG G3 Speaker Assembly \(Sprint\)](#) (1)

Step 1 — Rear Speaker



- Remove the 13 screws found on the back of the phone.
- ⓘ The screw circled in red is shorter than the other 12 screws. For an easier time when reassembling the phone, store it separately from the other screws.

Step 2



- Locate the same gap used in the earlier step
- Lift gently using your fingers

Step 3



- Remove the bottom panel

Step 4



- remove the speaker from the rear panel and insert the new speaker

To reassemble your device, follow these instructions in reverse order.