



# LG G3 Screen Replacement

Replacing the screen.

Written By: Naoto



# INTRODUCTION

This guide will show you how to replace a damaged screen on your LG G3.

This part includes the fused display, digitizer and support frame, if your replacement part is the glass digitizer and screen alone, without the frame, follow this longer, more complicated [digitizer and LCD replacement guide](#).



## TOOLS:

- [Phillips #00 Screwdriver](#) (1)
- [Tesa 61395 Tape](#) (1)
- [Double Sided Adhesive Tape - 1mm Width](#) (1)
- [Double Sided Adhesive Tape - 5mm Width](#) (1)
- [iFixit Opening Tools](#) (1)
- [iOpener](#) (1)
- [iFixit Opening Picks set of 6](#) (1)



## PARTS:

- [LG G3 Screen](#) (1)
- [LG G3 Display Adhesive](#) (1)
- [LG G3 \(AT&T\) Screen Assembly](#) (1)
- [LG G3 \(T-Mobile\) Screen Assembly](#) (1)
- [LG G3 \(Verizon\) Screen Assembly](#) (1)
- [LG G3 Motherboard \(AT T\)](#) (1)
- [LG G3 Motherboard \(T-Mobile\)](#) (1)
- [LG G3 Motherboard \(Verizon\)](#) (1)

## Step 1 — Screen



- Remove the 13 Phillips #00 screws found on the back of the phone.
- ⓘ The screw circled in red is shorter than the other 12 screws. For an easier time when reassembling the phone, store it separately from the other screws.

## Step 2



- Locate the same gap used in the earlier step
- Remove the bottom panel by gently lifting using your fingers

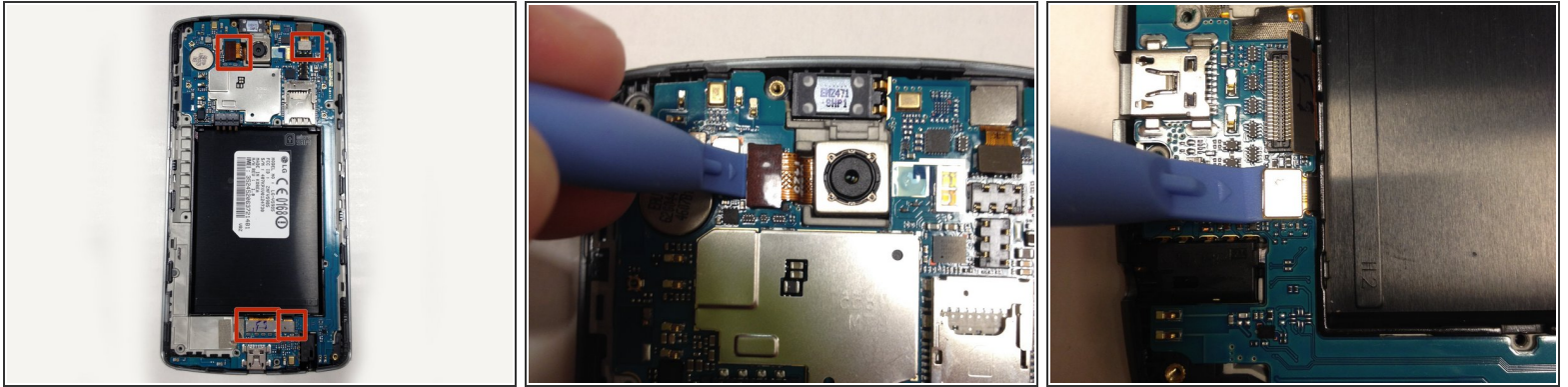
## Step 3



- Remove the top panel by gently lifting with your finger
- ⓘ Do not pull up too forcefully, as there is a risk of the top panel breaking

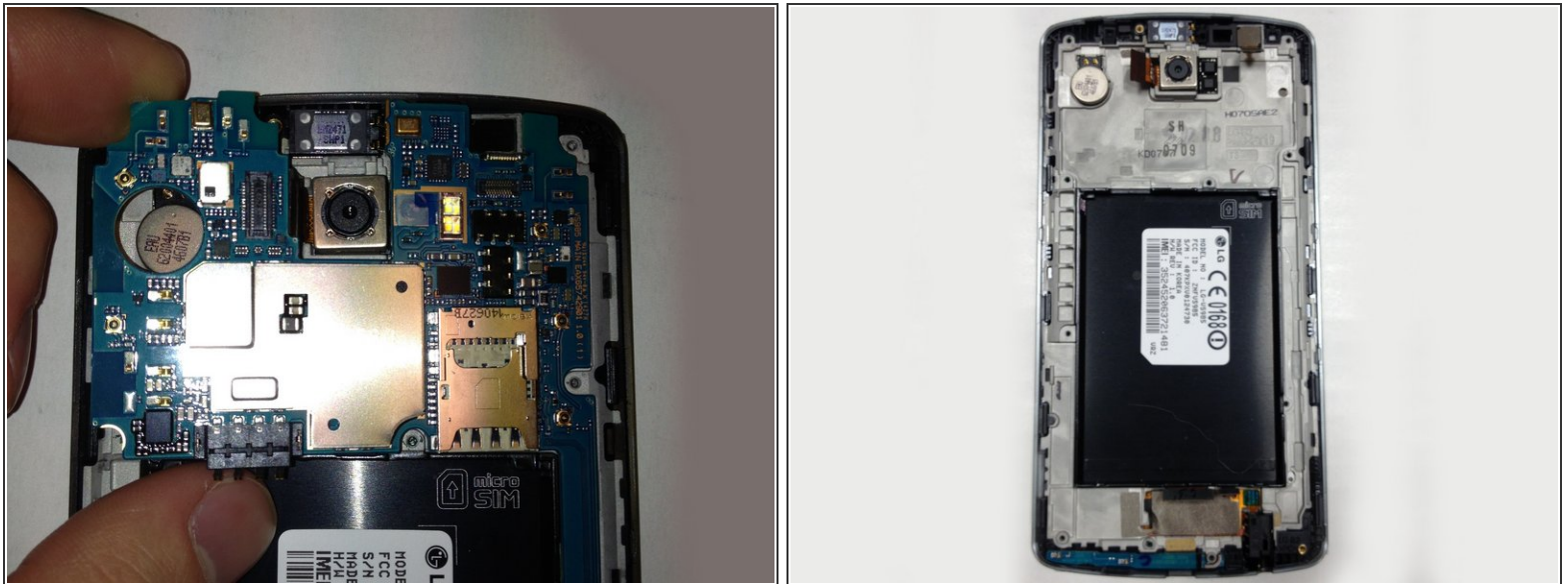


## Step 4



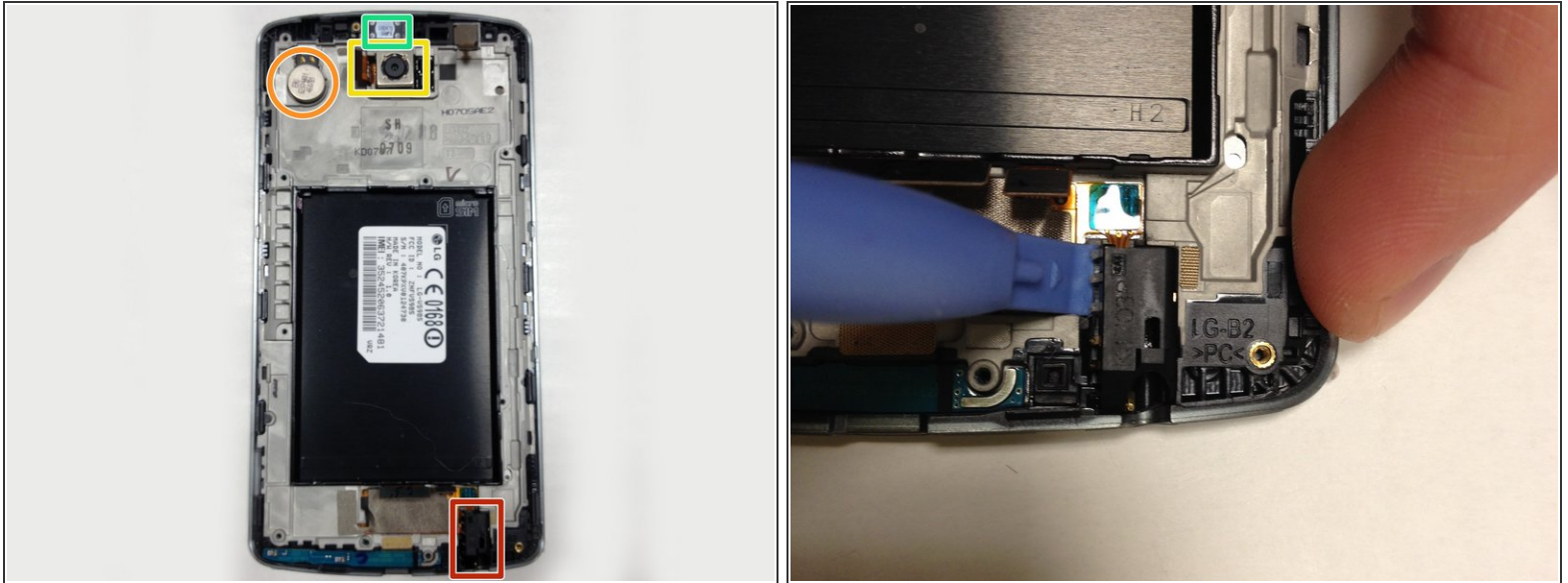
- Take the plastic opening tool and gently wedge it under where the ribbon cable is connected
- Gently lift up to disconnect the ribbon cable
- Repeat until all four ribbon cables are disconnected



## Step 5



- Remove the motherboard by lifting gently
- ⓘ Take care not to damage the ribbon cables if the other components are functional. Damaging them may result in other components not working

## Step 6



-  The following components are kept in place with an adhesive, so it may take some time and effort to get it out
- Remove the headphone port
  - Remove the vibration motor
  - Remove the rear-facing camera
  - Remove the earpiece speaker
-  If you are going to be using a screen assembly with a pre-installed frame, you may stop here and follow the previous steps in reverse with your new screen assembly. Otherwise, you will now transfer the LCD bezel as well as the speaker grille.

To reassemble your device, follow these instructions in reverse order.