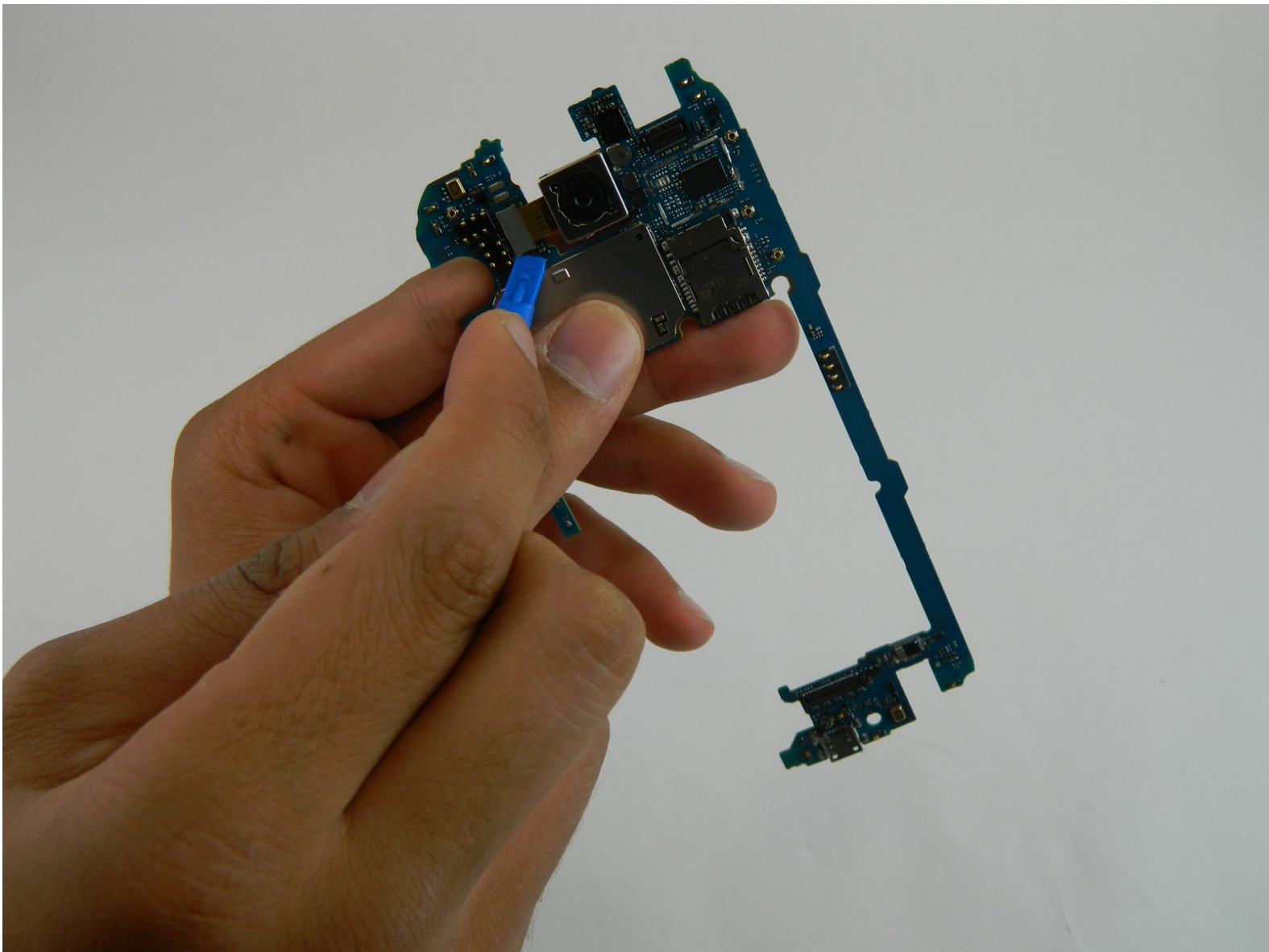




LG G4 Rear Camera Replacement

If the rear camera in your LG G4 is no longer functioning, this guide will show you how to replace it.

Written By: Austin Stratton



INTRODUCTION

This guide will show you how to replace the back camera.



TOOLS:

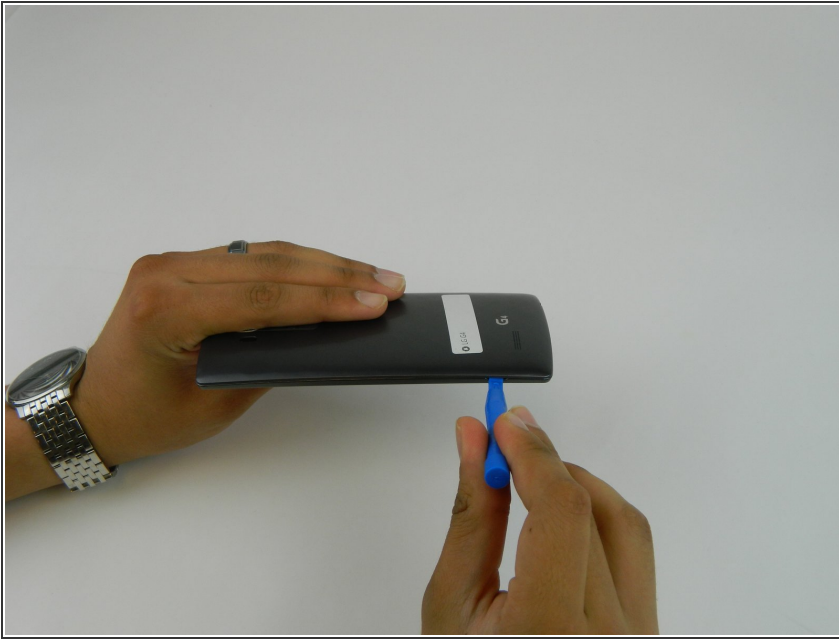
- [iFixit Opening Tools](#) (1)
- [Phillips #00 Screwdriver](#) (1)



PARTS:

- [LG G4 Rear Camera](#) (1)

Step 1 — Back Cover



 Make sure the phone is powered off.

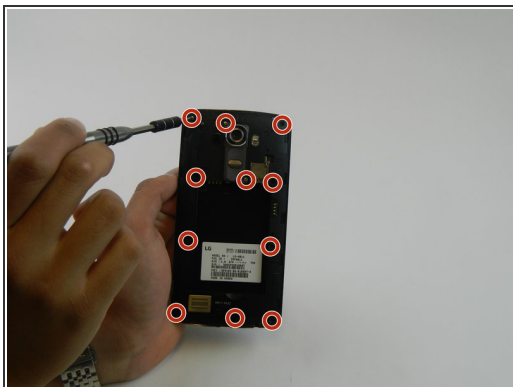
- Remove the rear cover by placing the plastic opening tool in the groove on the bottom left side of the LG G4 and gently prying up.

Step 2



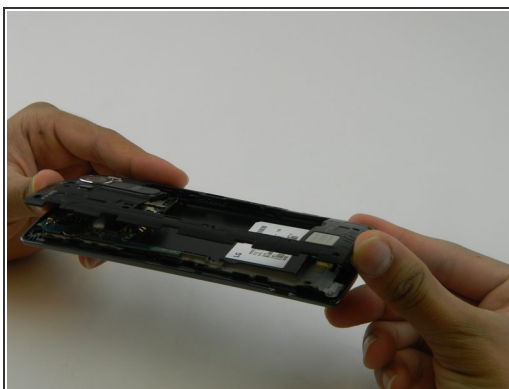
- Place the plastic opening tool at the bottom edge of the battery and lift up. Carefully remove battery with your hands.

Step 3



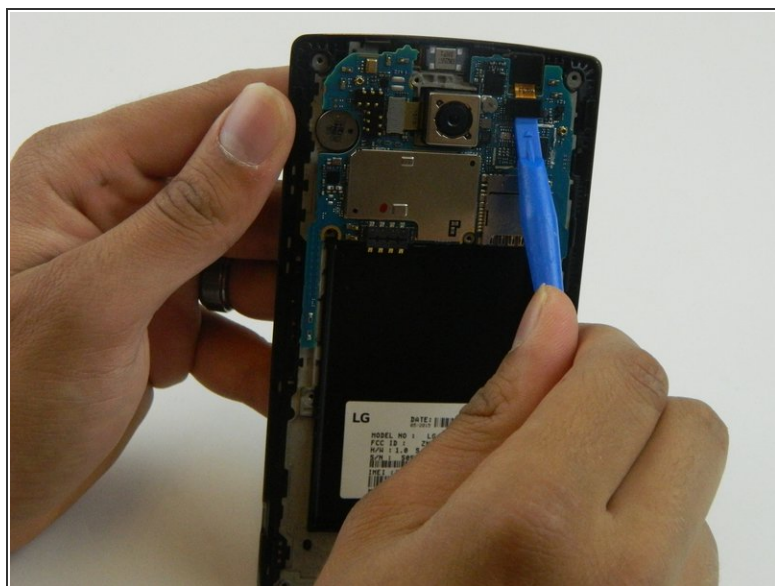
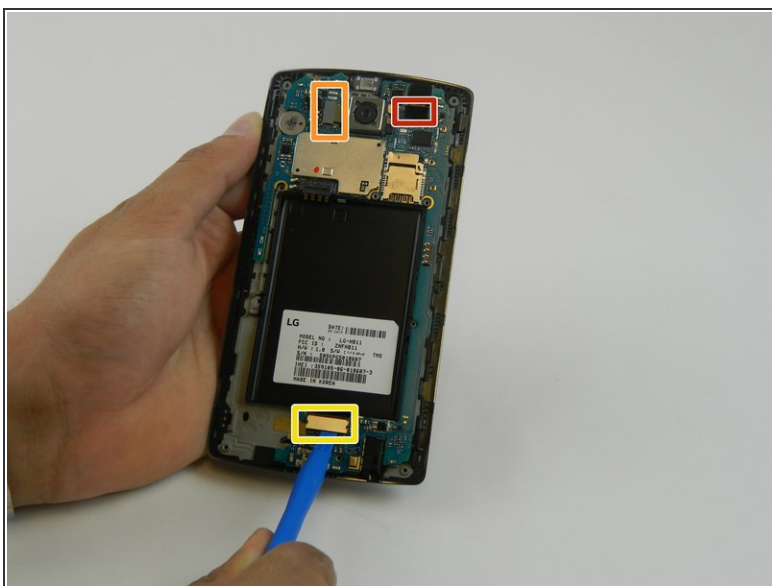
- Remove the **eleven** 3.9 mm Phillips #00 screws found at the back of the phone.

Step 4




- Once all the screws have been removed, place the plastic opening tool in the lower left corner and firmly lift the cover up.
- Detach the cover with your fingers

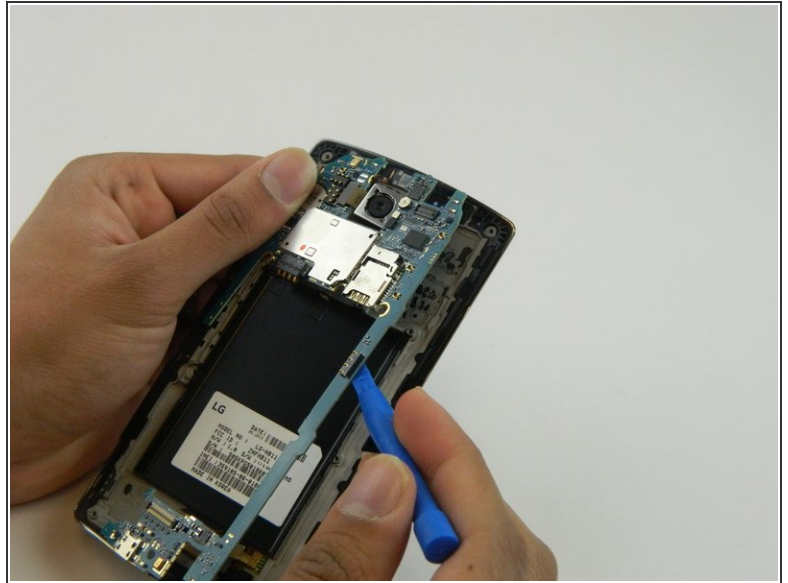
Step 5 — Motherboard



- Remove the following four press-fit connectors with the flat edge of a plastic spudger or opening tool:
 - Front-facing camera connector.
 - Rear-facing camera connector.
 - Digitizer connector.

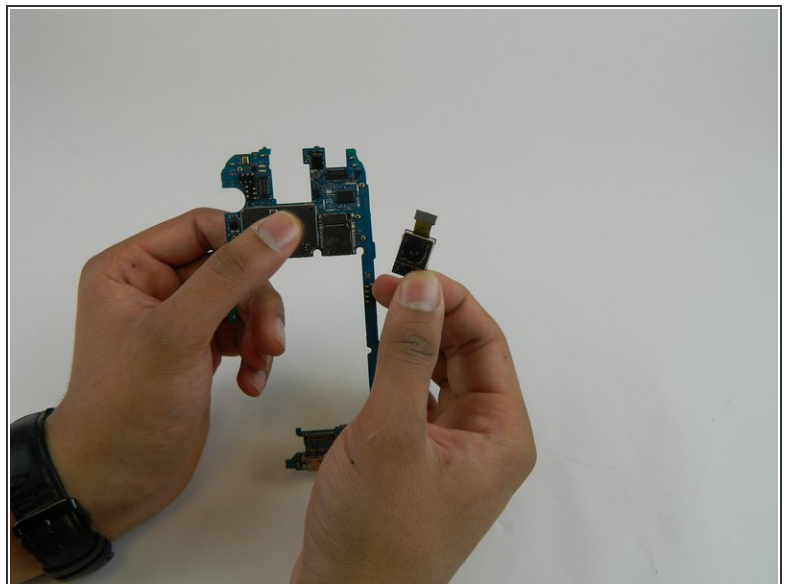
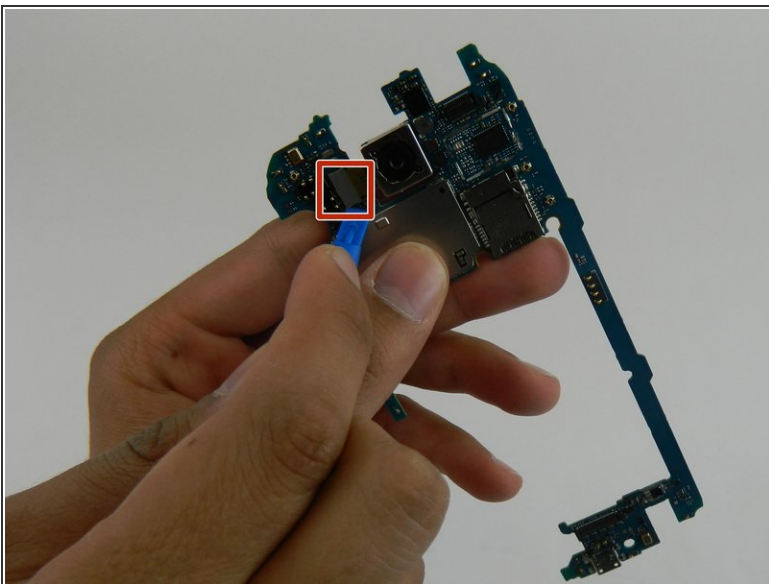
 The rear-facing camera may be held down to the frame with two sided tape. Try to move the camera with the spudger prior to lifting the motherboard. If it does not budge, use the same tool to pry it from the frame to avoid damaging the connector cable in the next step.

Step 6



- Remove the motherboard by lifting it up using the plastic opening tool and your fingers .

Step 7 — Rear Camera



- Gently wedge the plastic opening tool under the ribbon where the rear camera cable is connected, and slowly lift up to detach the cable from the mother board.

To reassemble your device, follow these instructions in reverse order.