



# LG G5 Charging Port Replacement

This guide will give instructions on how to replace the charging port on the LG G5

Written By: Joshua Zalmanowitz





## TOOLS:

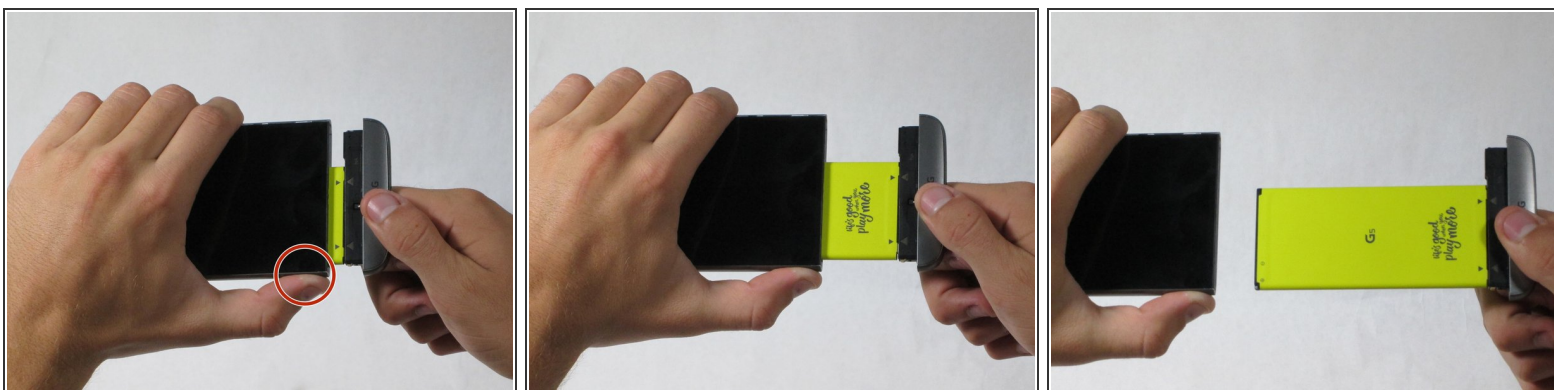
- [Phillips #000 Screwdriver](#) (1)
- [Phillips #00 Screwdriver](#) (1)
- [iFixit Opening Tools](#) (1)
- [Tweezers](#) (1)




## PARTS:

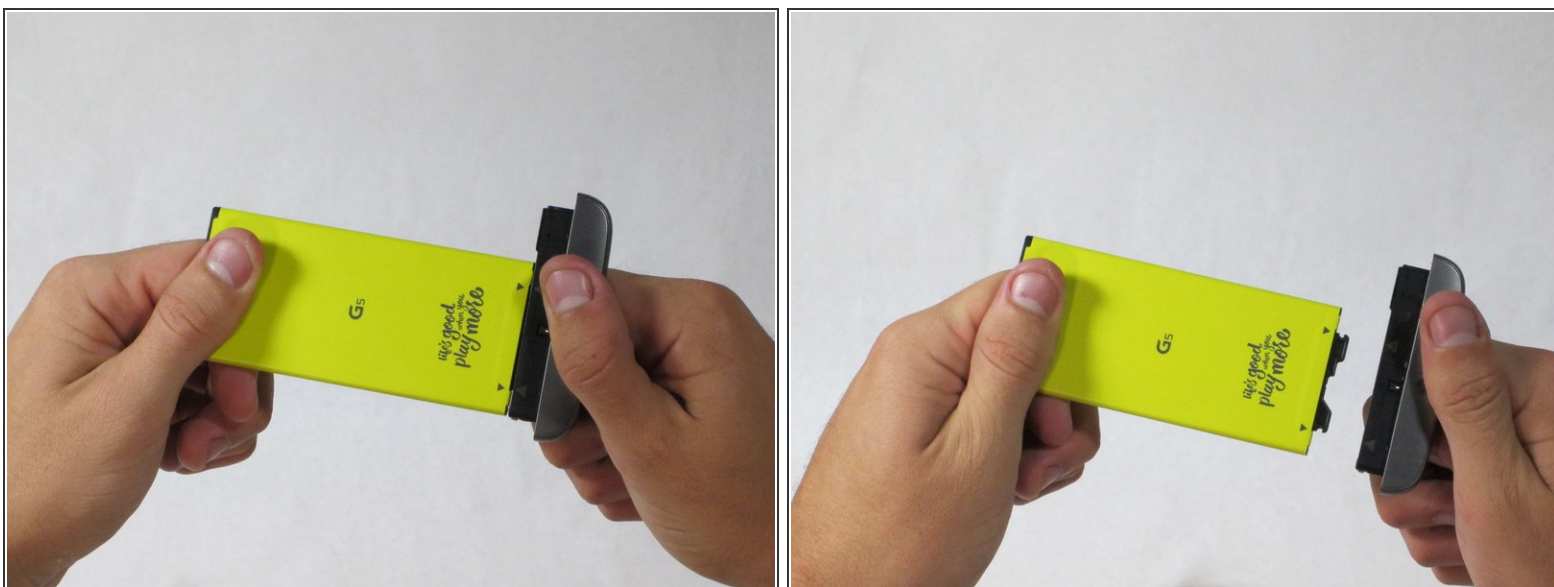
- [LG G5 Charging Assembly](#) (1)


## Step 1 — Battery



-  Power down the phone by holding the power button for several seconds.
- While holding the battery release button, pull the bottom end of the phone out of the body.

## Step 2



- Separate the battery from bottom half.
-  Insert the new battery in the same position and orientation as the old battery. Match up the arrows to be sure the orientation is correct.

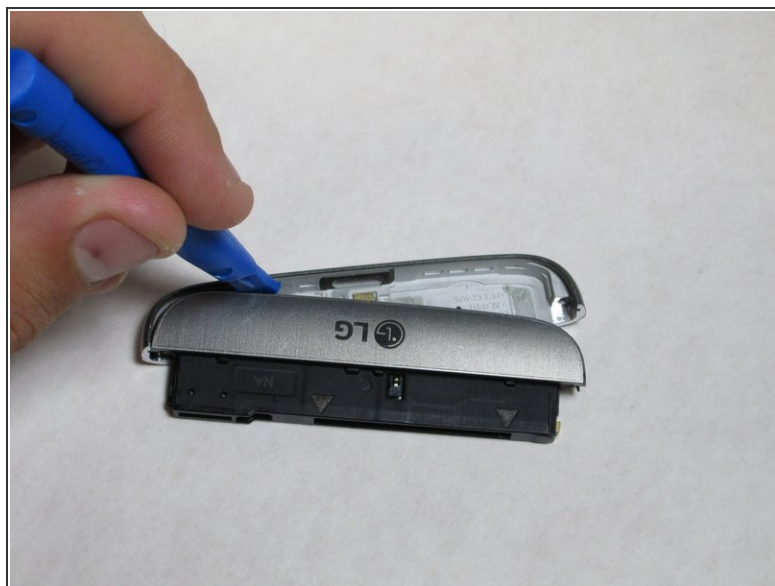
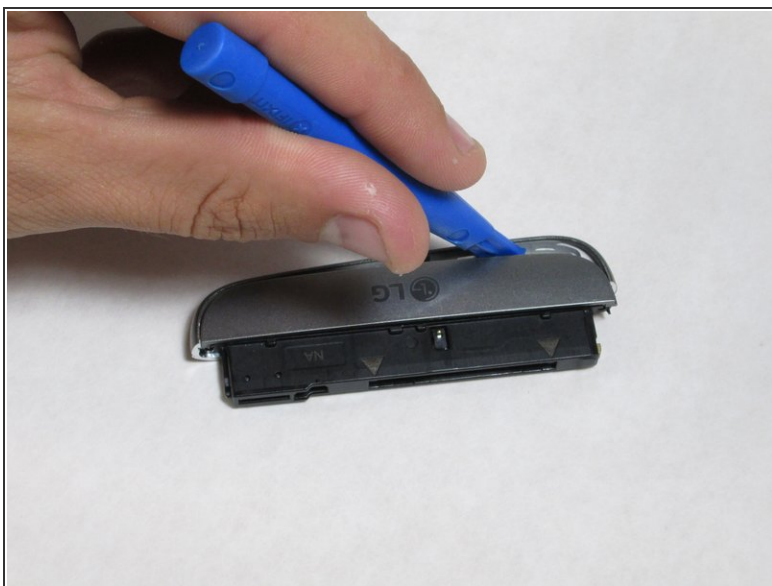


### Step 3 — Charging Port



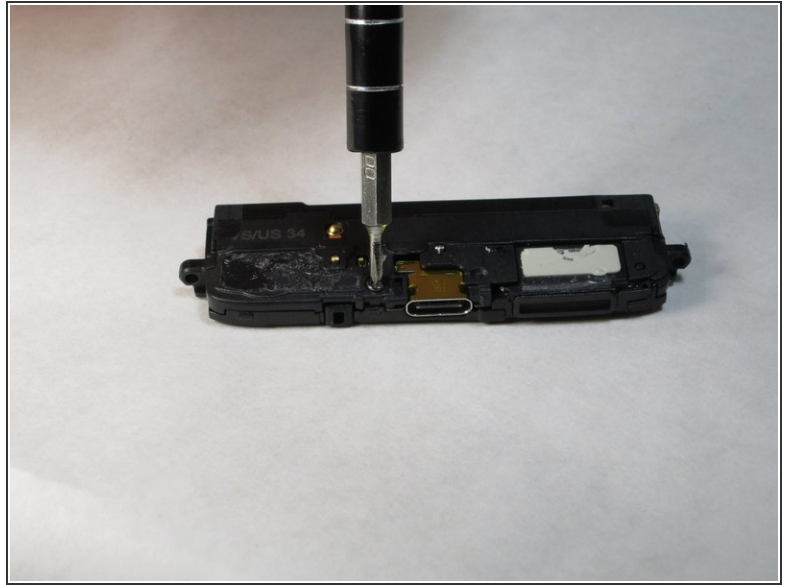
- Remove the two 5.5mm Phillips #00 screws from the base of the phone.

### Step 4



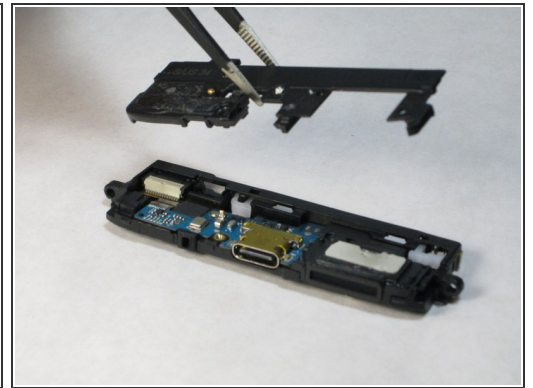
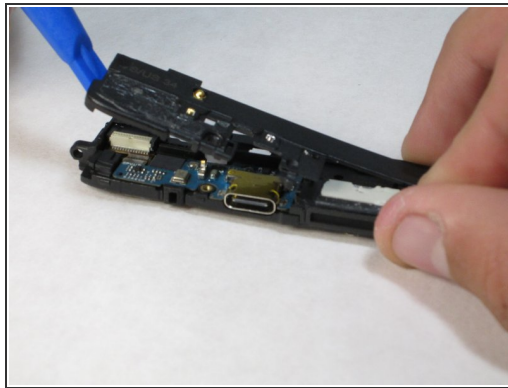
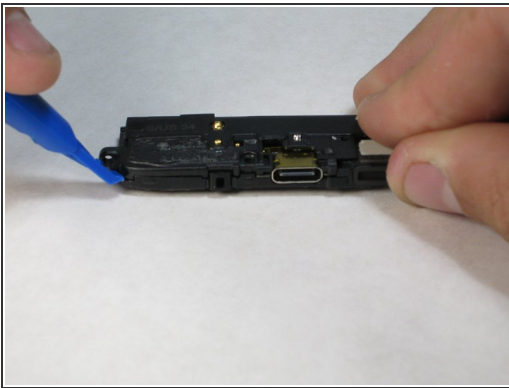
- Insert the plastic opening tool into the bottom seam
- Pry the plastic from the base only a slight amount.

## Step 5



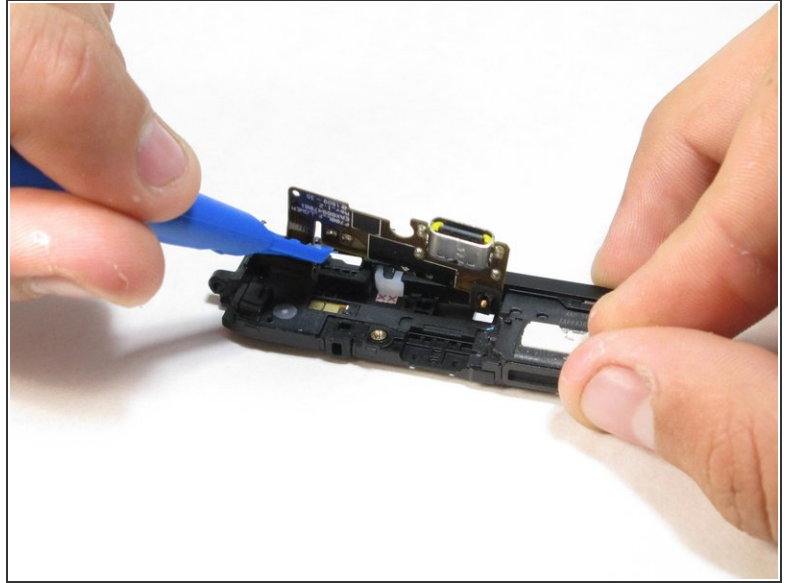
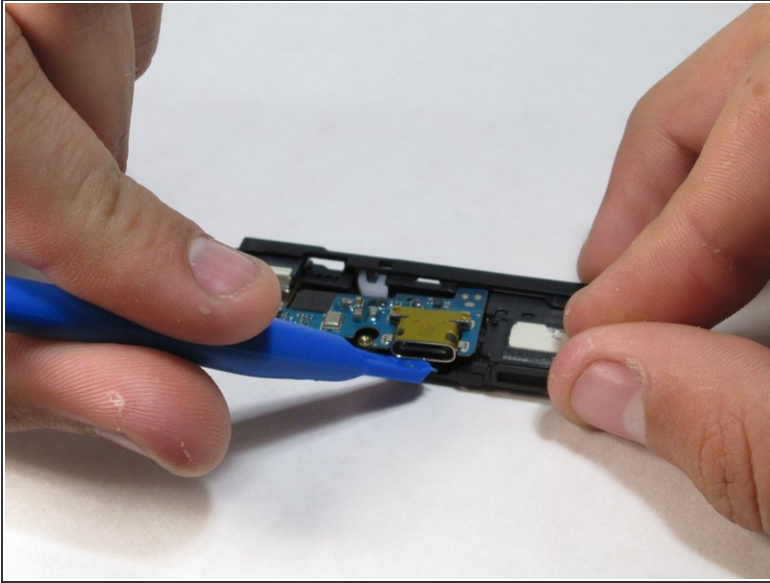
- Remove the one 5.5mm Phillips #000 screw.

## Step 6



- Insert the plastic opening tool into the seam between the two plastic layers.
- Pry the plastic from the body.

## Step 7



- Insert the plastic opening tool into the seam under the metal charging port.
- Pry the metal charging port from the body.

To reassemble your device, follow these instructions in reverse order.