



LG G5 Rear Camera Replacement

This guide will provide information on how to replace the rear facing camera on the LGG5.

Written By: Parker Reynolds



INTRODUCTION

This guide will show you the steps to replace a damaged rear facing camera.



TOOLS:

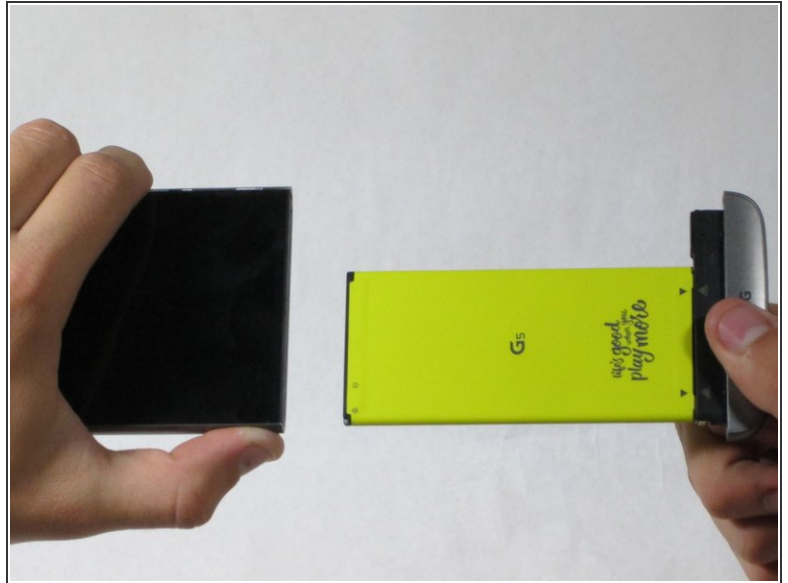
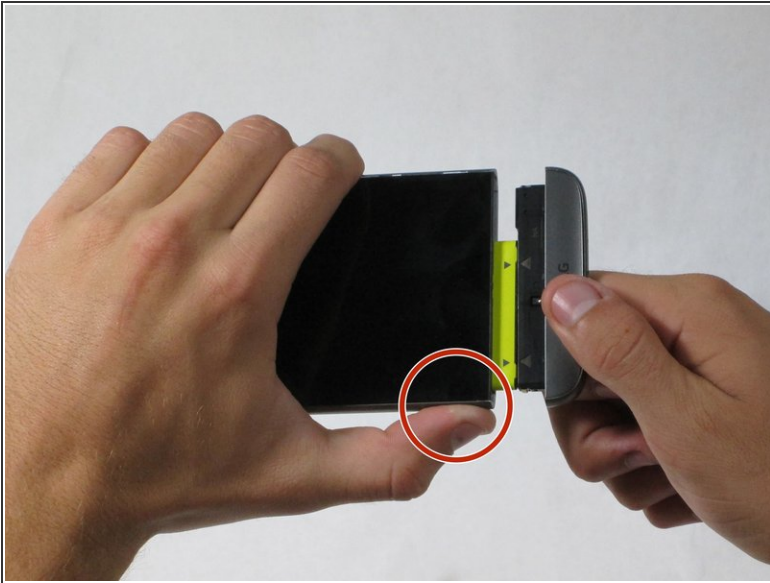
- [Spudger](#) (1)
- [Phillips #00 Screwdriver](#) (1)
- [iFixit Opening Tools](#) (1)
- [SIM Card Eject Tool](#) (1)
- [Tweezers](#) (1)



PARTS:

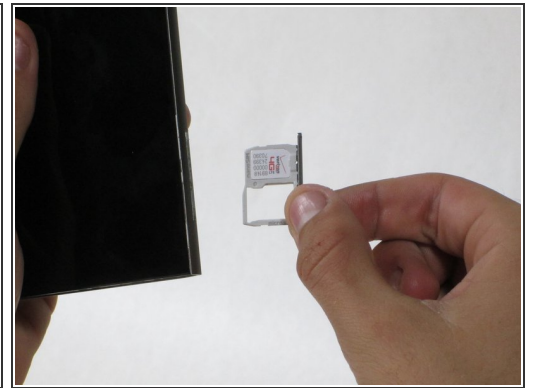
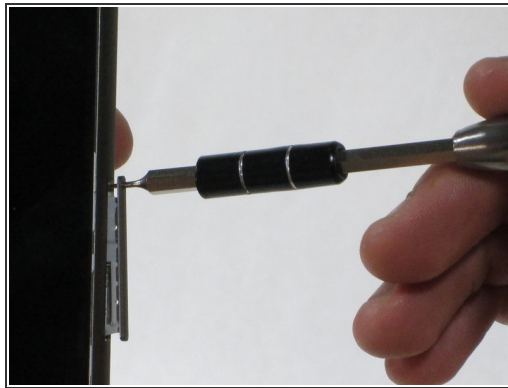
- [LG G5 Main Rear Camera](#) (1)

Step 1 — Front Panel Assembly



- While holding the battery release button, pull the bottom end of the phone out of the body.

Step 2



- Insert the sim card eject tool (0.8mm sim card eject head) into the small hole on the sim card tray.
- Press inward with some force to eject the tray.
- Pull the sim card tray out of the phone.

Step 3



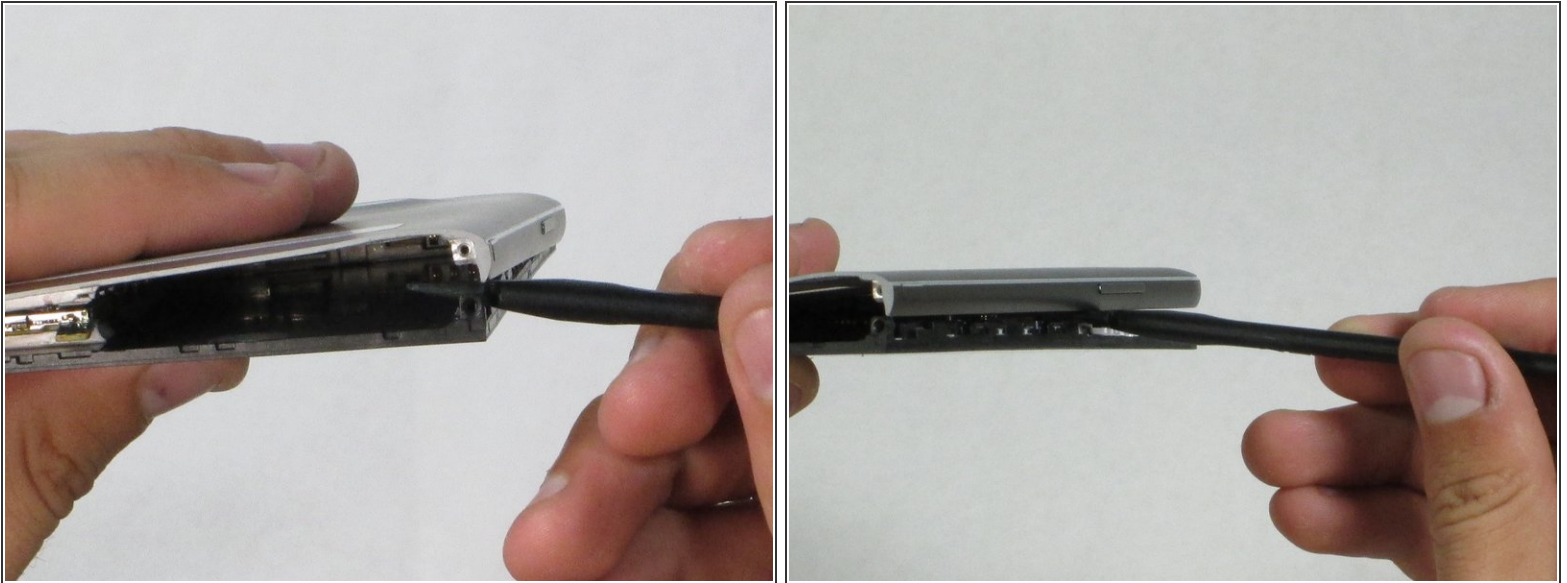
- Remove the two 5.5mm Phillips #00 screws from the base of the phone.

Step 4



- Insert the plastic opening tool into the seam between the glass screen and the metal body.
- Pry the glass from the body only a slight amount.

Step 5



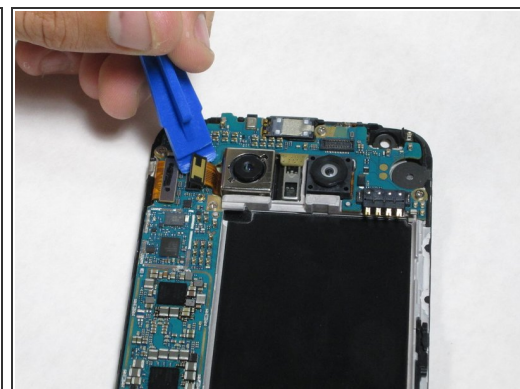
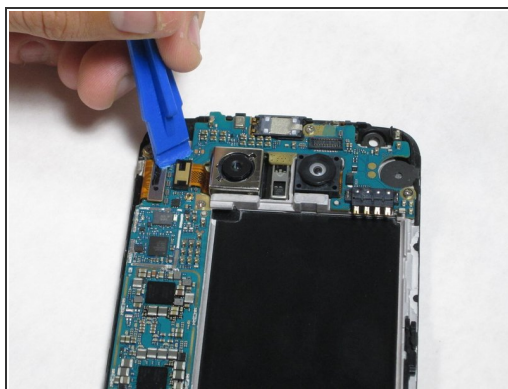
- Insert the Spudger into the now open space between the body and screen.
 - Push inward to separate the screen even more.
 - Slowly slide the nylon spudger up the edge the phone till the screen pops out of the body.
- ☒ When putting the screen back in, press the edges down from the top of the phone to the bottom. The screen should "pop" into place.

Step 6



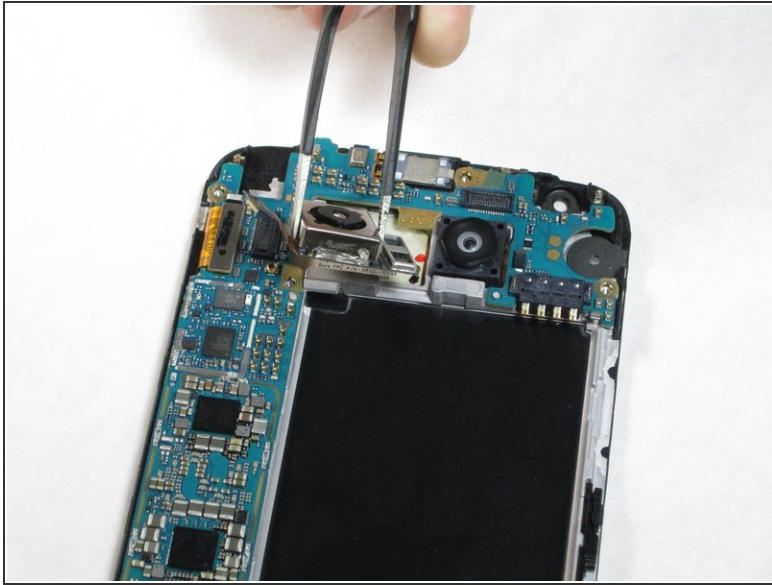
- Peel the screen away from the body. The two parts should be completely separated.

Step 7 — Rear Camera



- Insert the plastic opening tool between the camera-ribbon connector and the motherboard, then pull up. It should pop out easily.

Step 8



- After detaching the ribbon, carefully remove the camera using tweezers

To reassemble your device, follow these instructions in reverse order.