



LG G6 Motherboard Replacement

Replace the motherboard on a LG G6.

Written By: David Pugliese



INTRODUCTION

Use this guide to replace the motherboard on your LG G6.



TOOLS:

- [Phillips #000 Screwdriver](#) (1)
- [Metal Spudger](#) (1)
- [Spudger](#) (1)
- [Plastic Cards](#) (1)
- [iOpener](#) (1)
- [Suction Handle](#) (1)
- [Halberd Spudger](#) (1)
- [iFixit Opening Picks set of 6](#) (1)
- [Tweezers](#) (1)



PARTS:

- [Tesa 61395 Tape](#) (2)
Thin, high-bond tape is required if the replacement part does not come with adhesive.
- [LG G6 Motherboard](#) (1)

Step 1 — iOpener Heating



-  We recommend that you clean your microwave before proceeding, as any nasty gunk on the bottom may end up stuck to the iOpener.
- Place the iOpener in the center of the microwave.
-  For carousel microwaves: Make sure the plate spins freely. If your iOpener gets stuck, it may overheat and burn.

Step 2



- Heat the iOpener for **thirty seconds**.
- Throughout the repair procedure, as the iOpener cools, reheat it in the microwave for an additional thirty seconds at a time.

- ⚠ Be careful not to overheat the iOpener during the repair. Overheating may cause the iOpener to burst.
- ⚠ Never touch the iOpener if it appears swollen.
- ⚠ If the iOpener is still too hot in the middle to touch, continue using it while waiting for it to cool down some more before reheating. A properly heated iOpener should stay warm for up to 10 minutes.

Step 3



- Remove the iOpener from the microwave, holding it by one of the two flat ends to avoid the hot center.

⚠ The iOpener will be very hot, so be careful when handling it. Use an oven mitt if necessary.

Step 4 — Battery



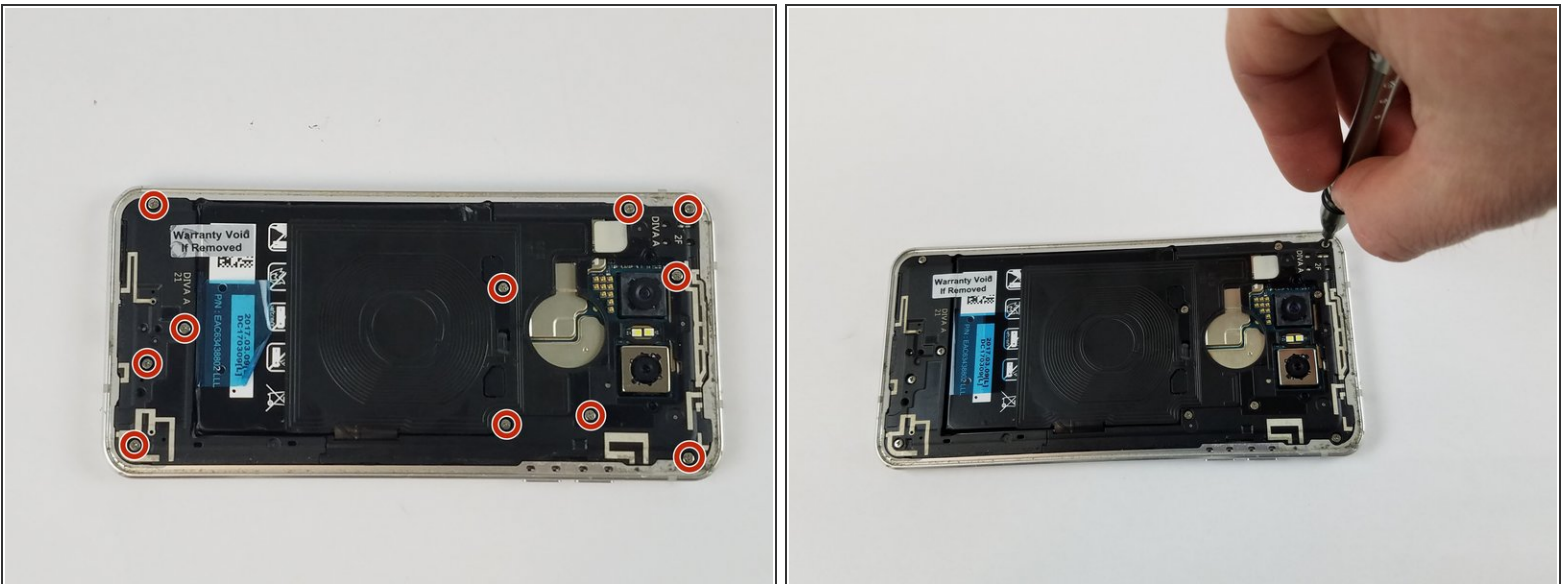
- Apply the heated iOpener to the edge of the phone for about 2 minutes.

Step 5



- When the back panel is heated, apply the suction cup close to a corner of the phone. Lift up and insert a halberd spudger or opening pick under the rear glass.
- Slide the blade of the Halberd spudger along the edge of the phone to separate the adhesive.
- Follow around the edge of the phone, and use an opening pick or other tool (such as a plastic card) to keep already opened portions from re-adhering.

Step 6



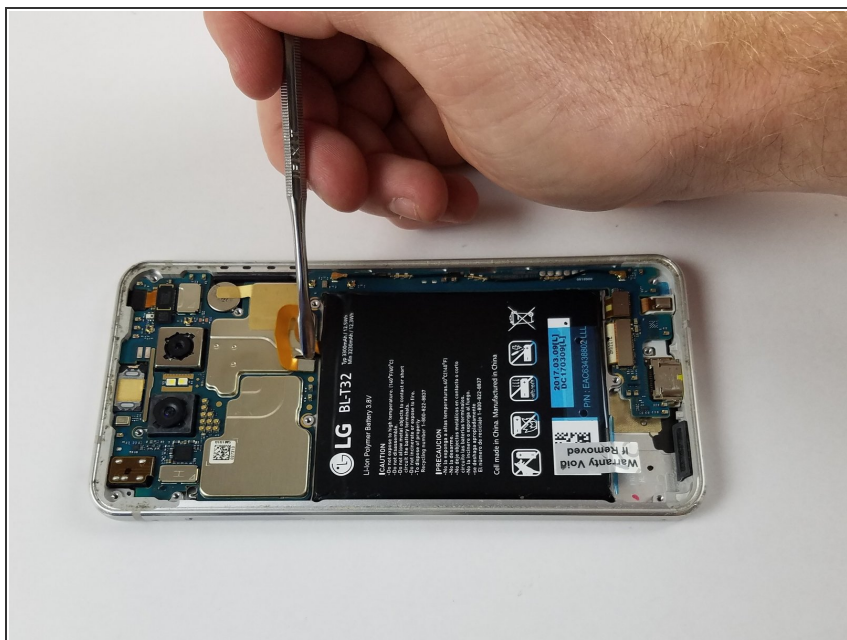
- Using a Philips 000 bit, remove 11 screws from the highlighted locations.

Step 7



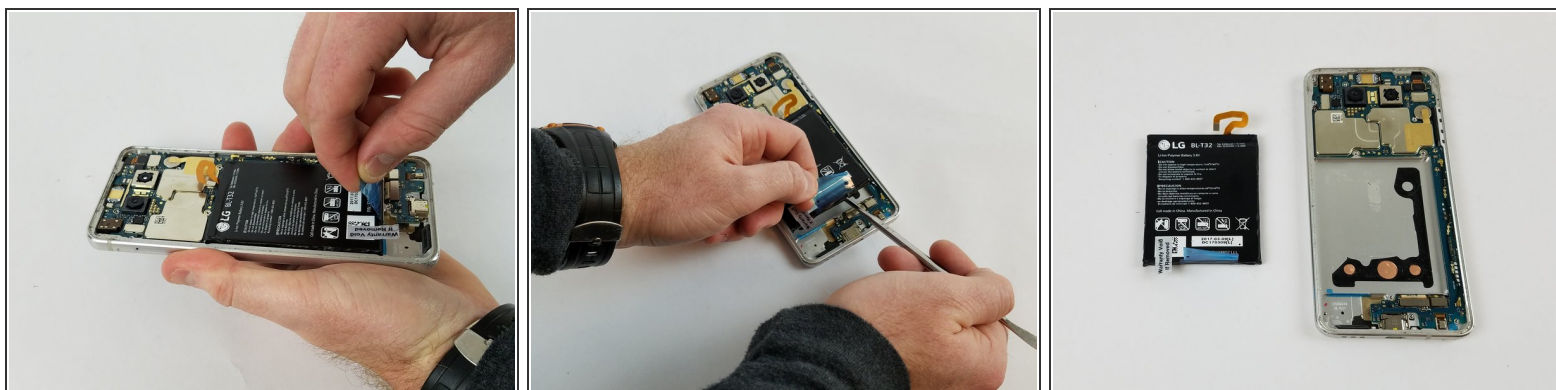
- With the screws removed, remove the lower frame components, followed by the upper mid-frame. Both components can be removed with a little prying.

Step 8



- Begin battery removal by very gently prying off the power ribbon with a plastic card or a nylon spudger.

Step 9



- Firmly pull the blue tab. Be careful not to bend the battery as you pull it away from the adhesive.

⚠ Do not use a knife as you may pierce the battery.

Step 10 — Motherboard



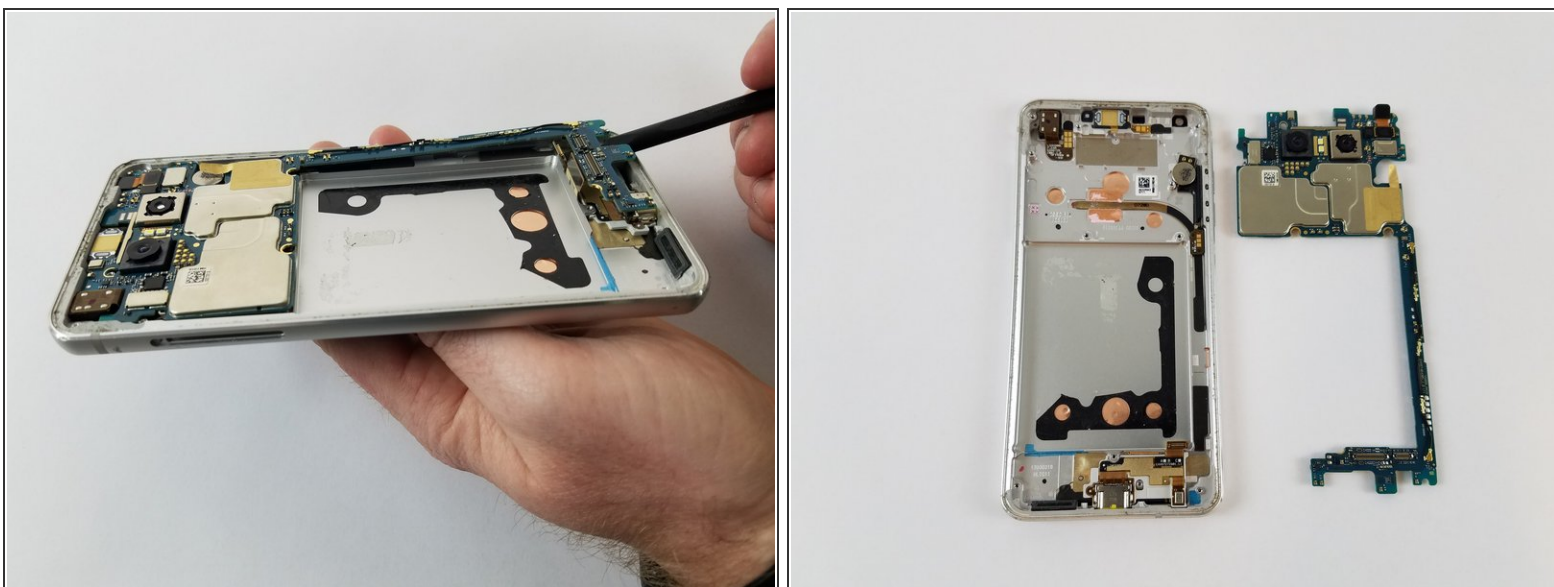
- Locate the sim card tray release mechanism on the right edge.
- Using the tweezers, or similar thin and rigid tool, push in the release button and pull out the sim card tray.

Step 11




- Gently pry off the two connectors at the bottom of the phone.
- Pry off the tape covering the vibrator.

Step 12



- The motherboard is now removable by gently lifting.

 Upon removal of the motherboard, the small plastic sim card tray release mechanism will be loose and may get lost.

To reassemble your device, follow these instructions in reverse order.