



# LG GSA-T20N Optical Drive Teardown

Written By: Bryan





## TOOLS:

- [Paper Clip](#) (1)
- [Phillips #0 Screwdriver](#) (1)

## Step 1 — LG GSA-T20N Optical Drive Teardown



- Remove the three screws

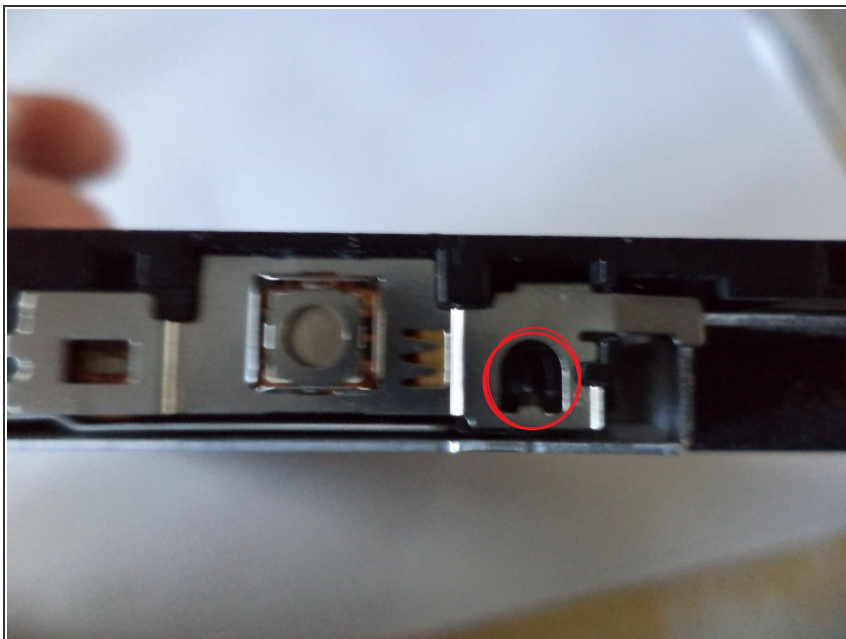
## Step 2



- Now you can take the hood of the burner.

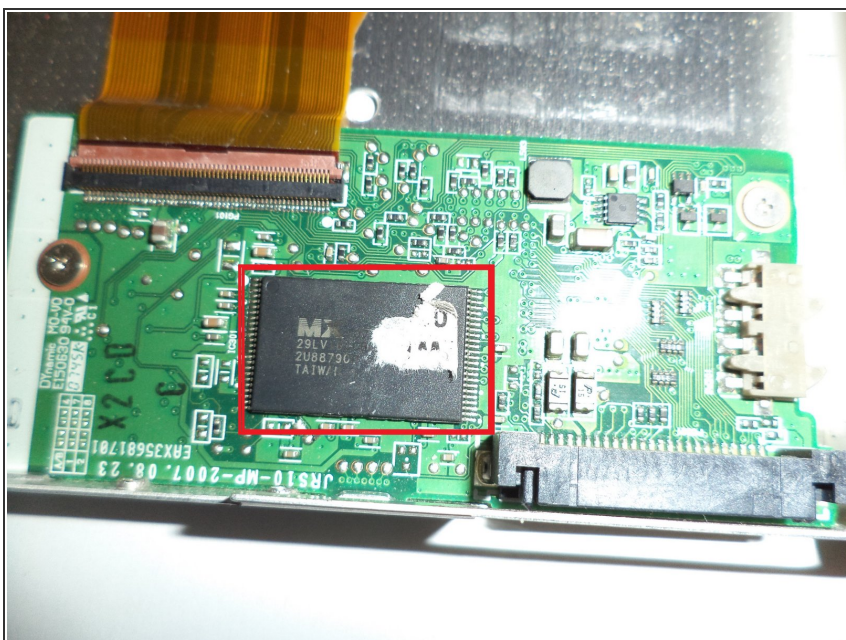


## Step 3



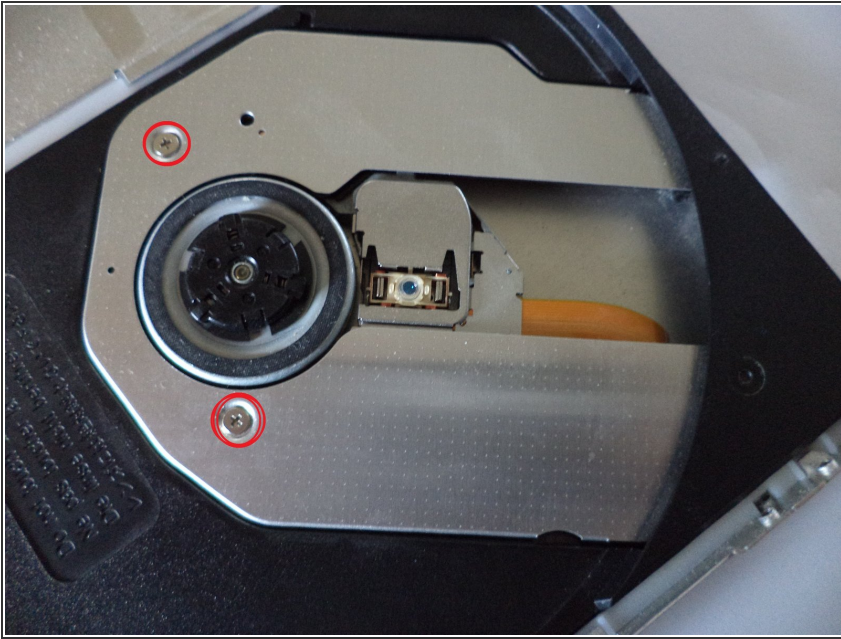
- Take a paperclip and push it in the hole to open the drive.

## Step 4



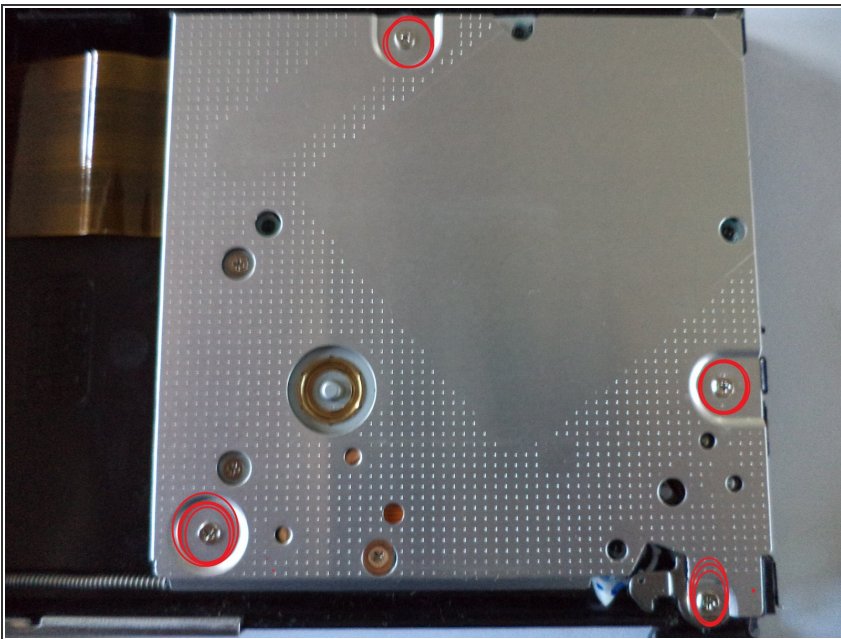
- Now you can see the PCB.
- Macronix Flash Memory for the Firmware of the optical drive.

## Step 5



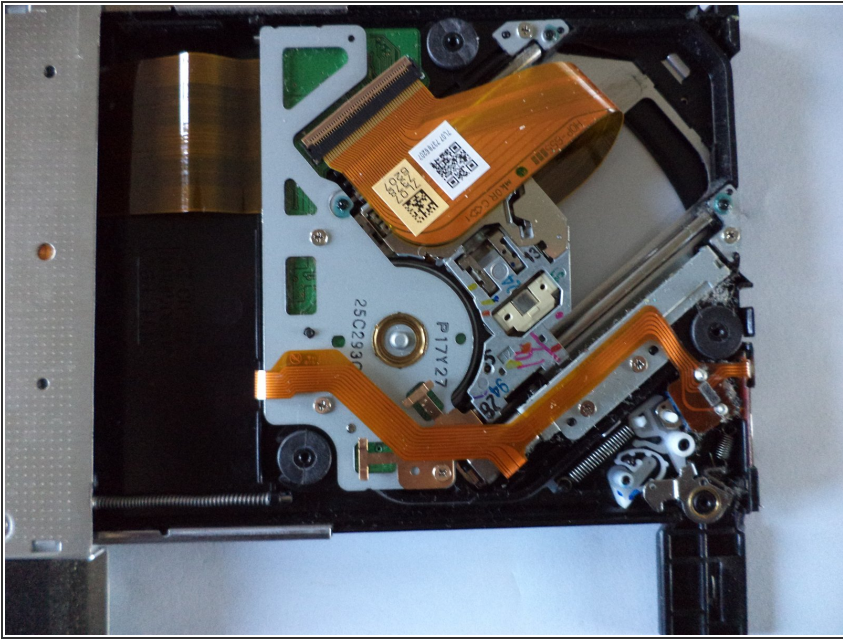
- Remove these screws.

## Step 6



- And these screws.

## Step 7



- Now you can see the drive motor and the laser unit.

To reassemble your device, follow these instructions in reverse order.