



# LG GW300 Teardown

A basic phone, that I used a few years ago. Found lying around so decided to make a teardown of it!

Written By: James



---

## INTRODUCTION

I have tried to include as much detail as possible in this teardown. I have even inspected the chips on the mainboard! Thanks for looking, and I hope you find this useful.



### TOOLS:

- [Pro Tech Toolkit](#) (1)
-

## Step 1 — LG GW300 Teardown



- Found this phone lying around, so decided to make a teardown of it!

## Step 2



- First, remove the backplate by pushing the button at the top of the back of the phone.



### Step 3



- From here there are six screws we have to remove.

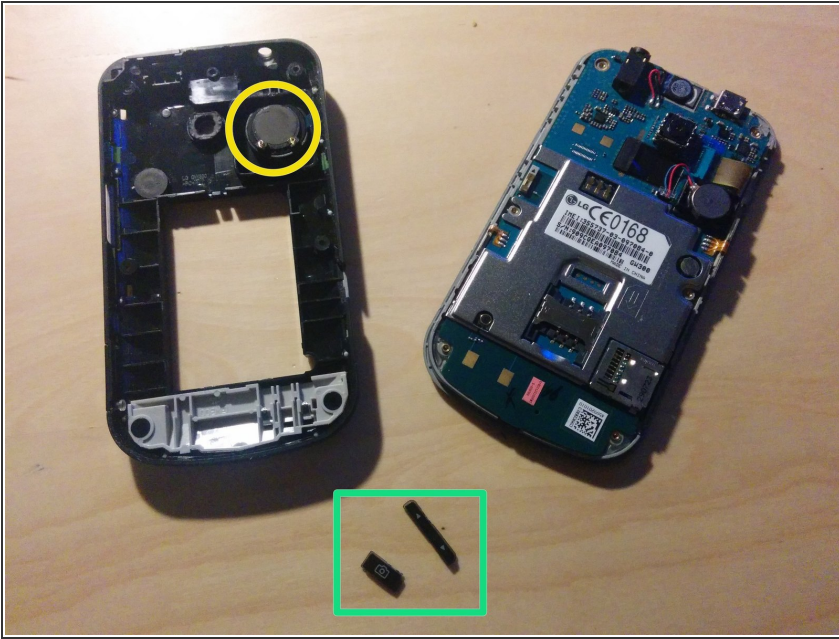
⚠ But first... lemme take a battery out!

### Step 4



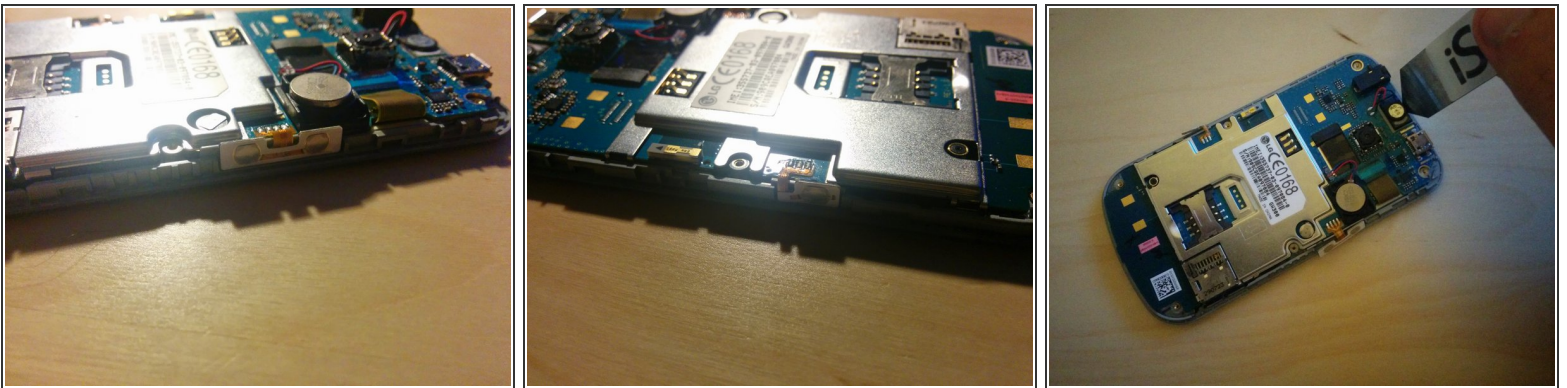
- Get a thin opening tool and slide it around the bezel of the device.
- ⚠ Make sure you put it in the correct place, behind the silver bezel of the front of the phone!

## Step 5



- The front and back of the device should separate.
- Two buttons should come off after you have removed the back.
- This is the rear speaker.

## Step 6



- Both of these buttons need to be pried from the front casing to allow the mainboard to come away from the front housing.
- ⚠ These buttons are soldered to the mainboard so make sure you don't break them!
- The front speaker also has to be pried from the front housing.



## Step 7



- The main board can then be lifted from the front housing.

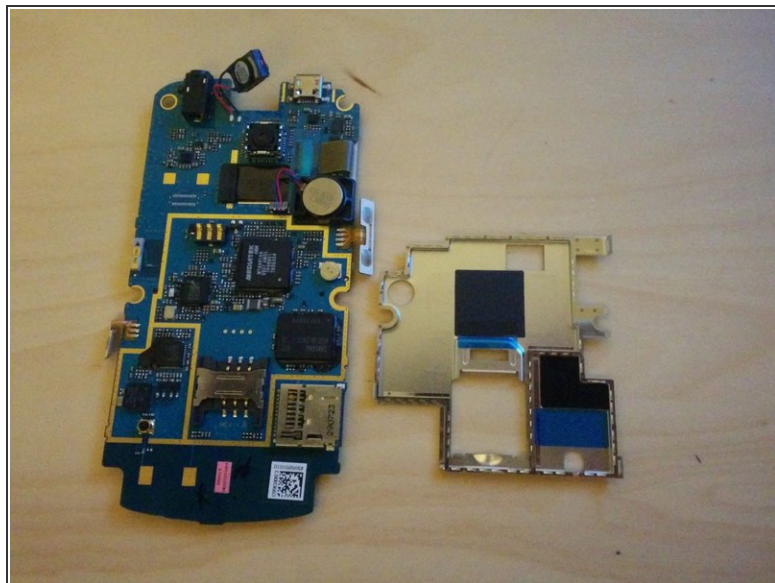
## Step 8



- The buttons on the front housing can then be pushed out through the back of the housing.

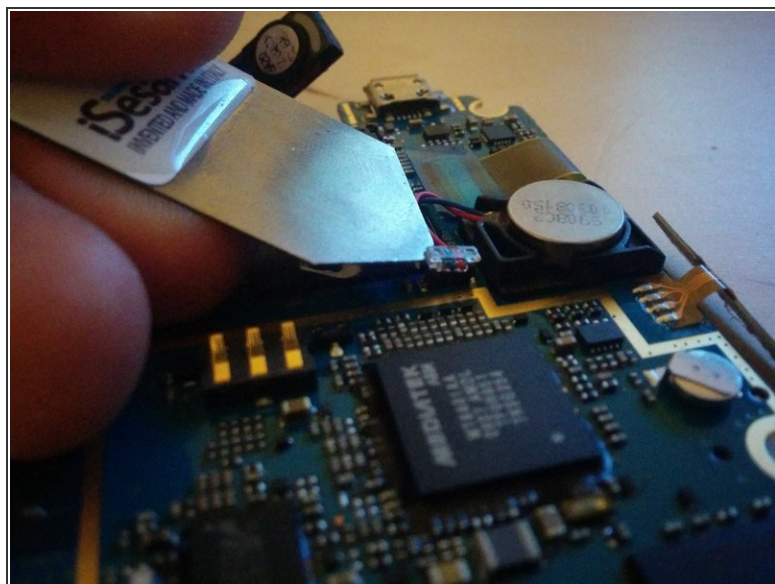
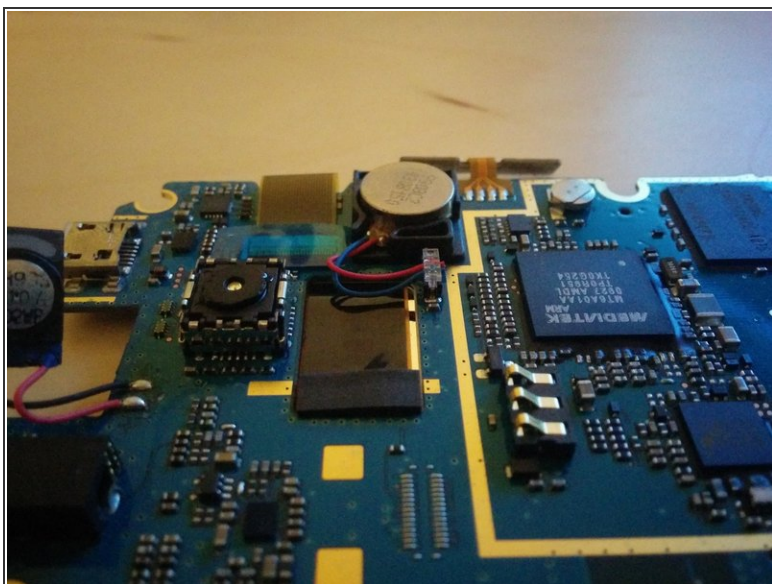


## Step 9



- The EMI shield can be removed by unclipping the clips on the side of the device.

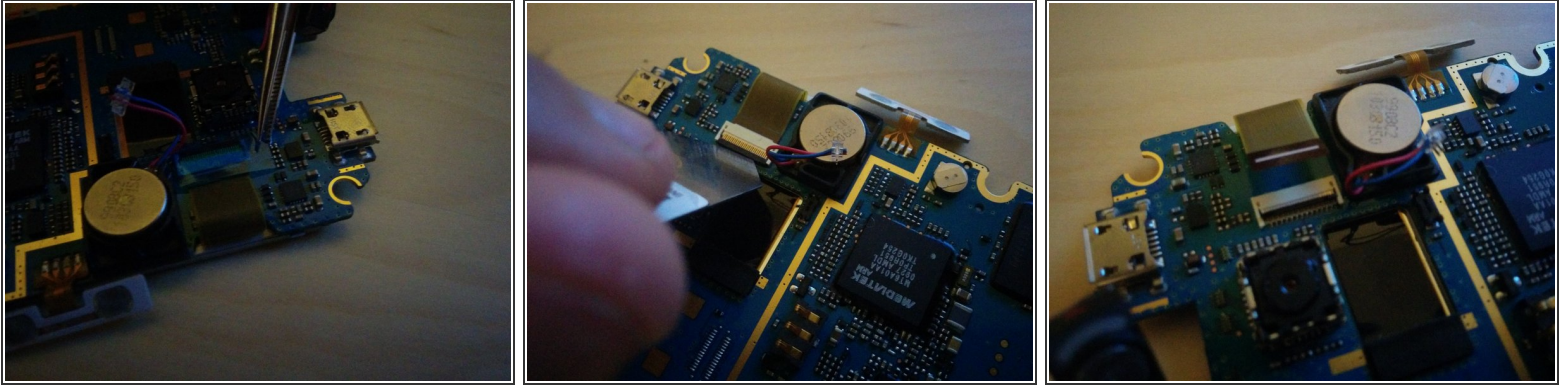
## Step 10



- In the centre of the picture is the vibration module. It can be unclipped to remove it.



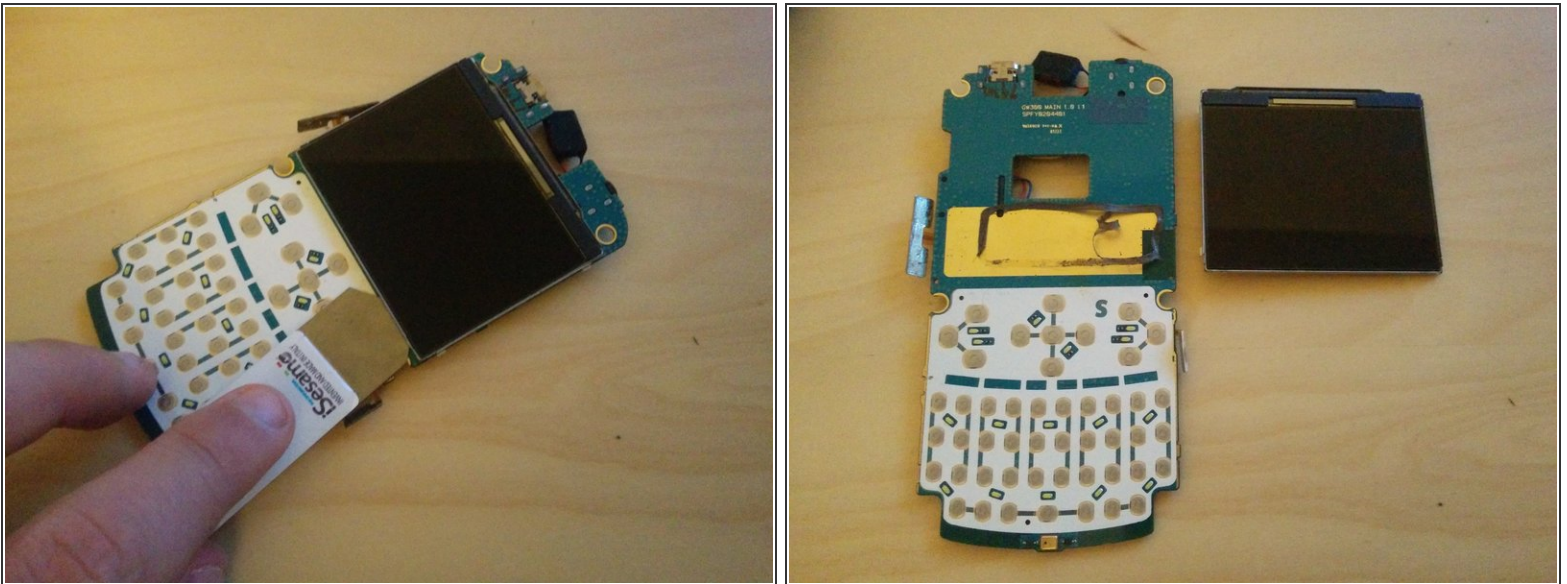
## Step 11



- The LCD ribbon cable and connector are under a plastic sheet that has to be removed.
- The ribbon cable can then be take out of the connector

⚠ The ribbon connector is very fragile, so be careful when lifting the lever.

## Step 12



- Use a thin opening tool to separate the LCD from the main board.

⚠ Do this slowly and carefully as the screen can easily crack or bleed.



## Step 13



- Chip inspection time!
- Mediatek ARM MT6A01AA
- Samsung K5D1H12ACC-A075 NAND flash memory
- Skyworks Solutions SKY77524-15
- CSR 51E130A14U