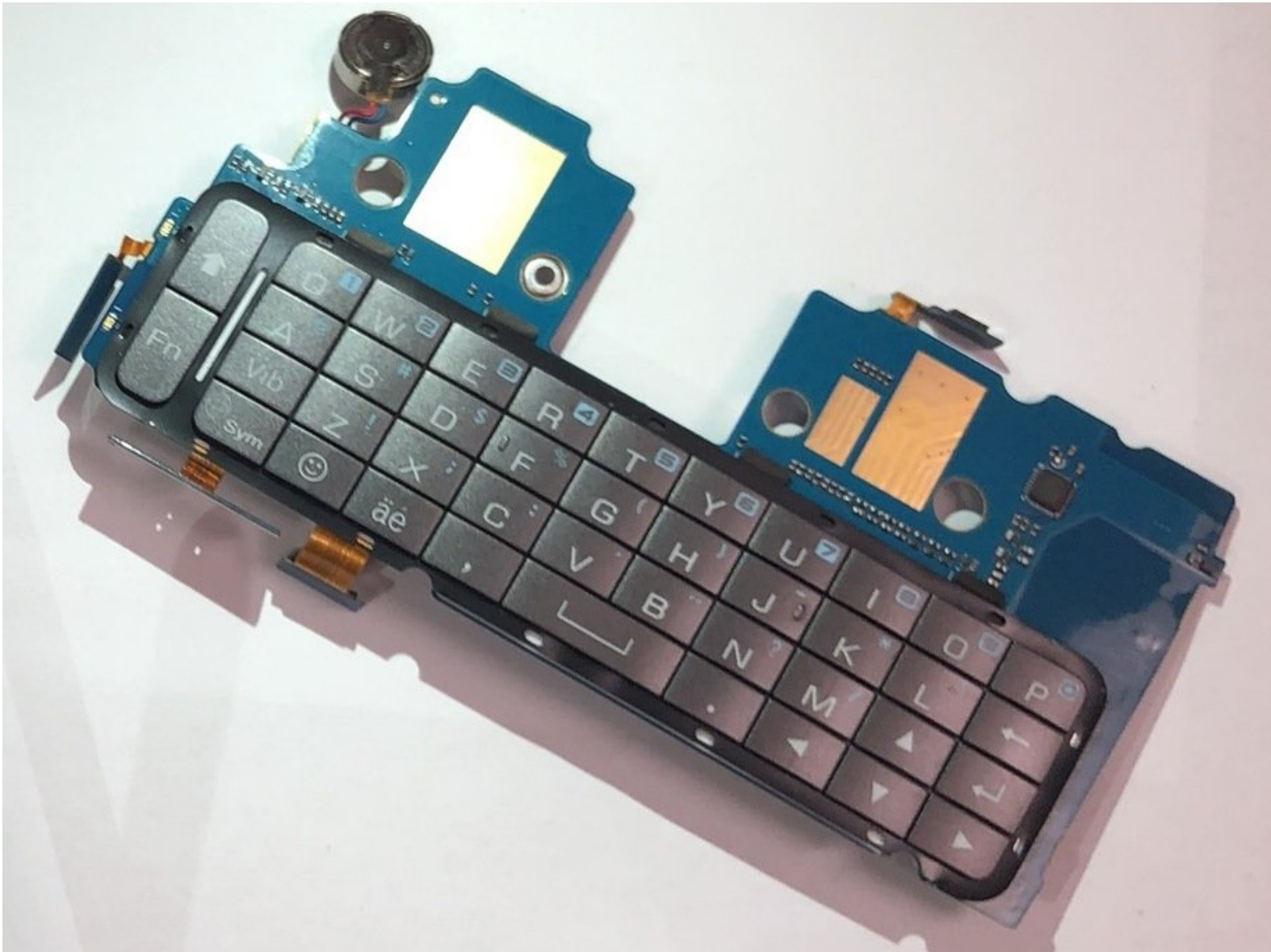




LG GW910 Keyboard Replacement

This guide will cover the replacement of the slide-out keyboard of LG GW910.

Written By: Jonas Ke



INTRODUCTION

This guide will assist you while you take your phone apart. This disassembly is not a very difficult task. There will be a few connectors that will be disconnected during the process. Make sure to be cautious with them so they do not rip. There are many little screws that will be taken off the phone. Make sure that you have a clean and organized work space.



TOOLS:

- [Phillips #000 Screwdriver](#) (1)
 - [iFixit Opening Tools](#) (1)
 - [Metal Spudger](#) (1)
-

Step 1 — Motherboard



- Remove the back cover by firmly pressing the triangle and push upwards.
- Lift the bottom section to remove the cover.

Step 2



- Remove the battery by lifting from the bottom.

Step 3



- Remove six 3mm PH000 screws.

Step 4



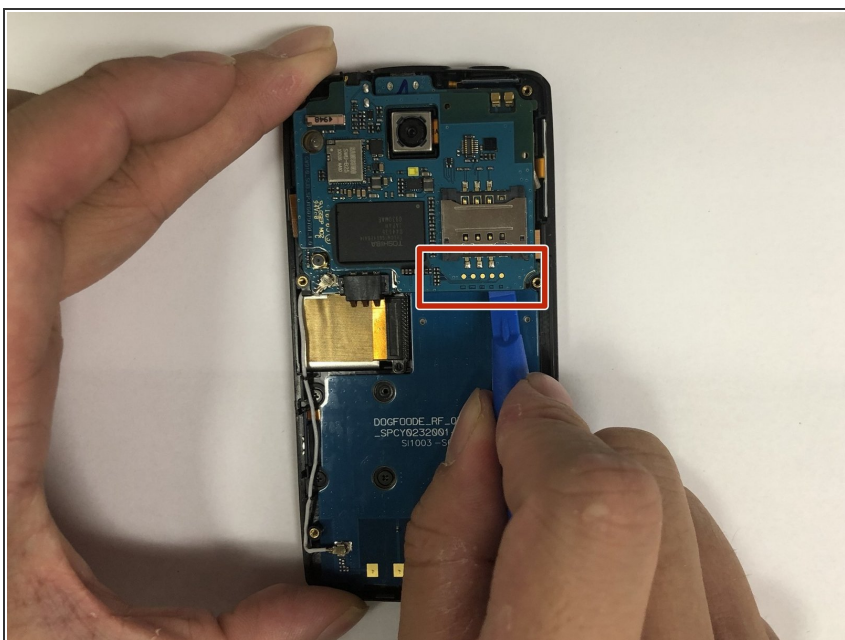
- Peel off the sticker with the metal spudger.
- Remove one 1mm PH000 screw.

Step 5



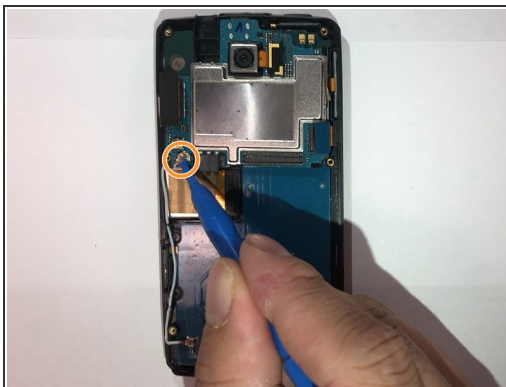
- Pry open all four sides of the back-frame gently, using the metal spudger.
- ⓘ The back-frame should come out easily.
- ⚠ Volume button and shutter button may fall out during the process.

Step 6



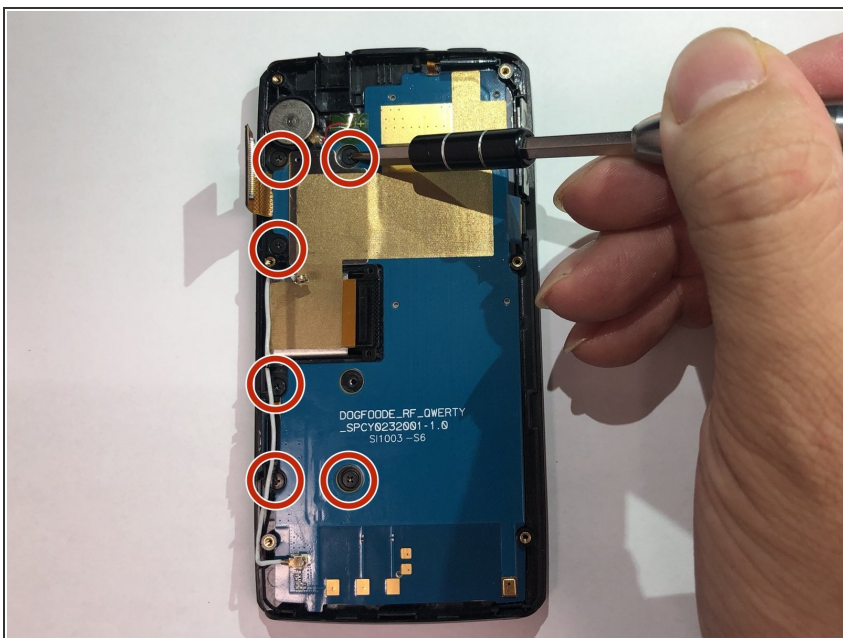
- Pry off the connector using the iFixit opening tool to remove the communication board.

Step 7



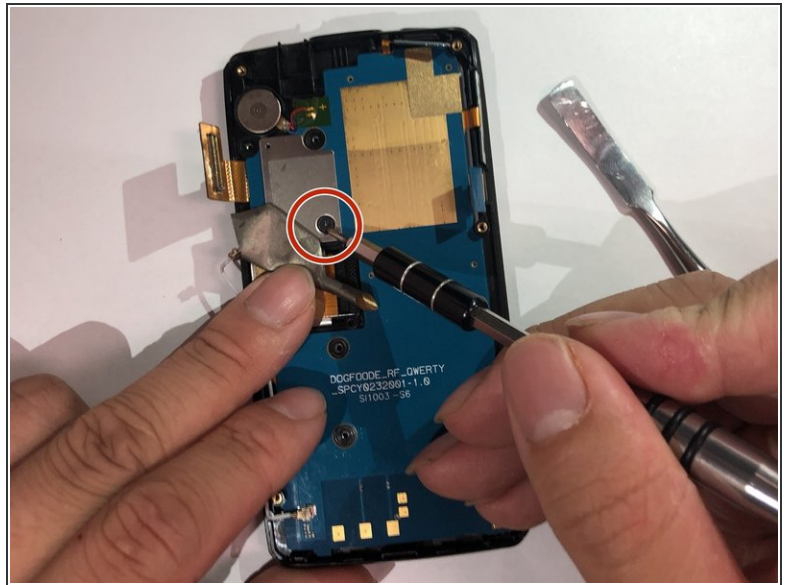
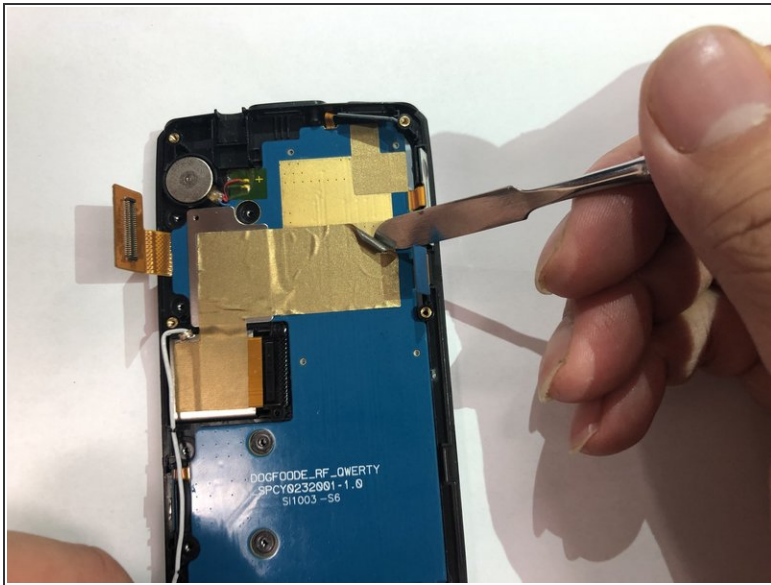
- Pry off the connectors using the iFixit opening tool.
- Disconnect the antenna using the iFixit opening tool.
- ⓘ The motherboard should be able to be removed easily.

Step 8 — Keyboard



- Remove six 1mm PH00 screws.

Step 9



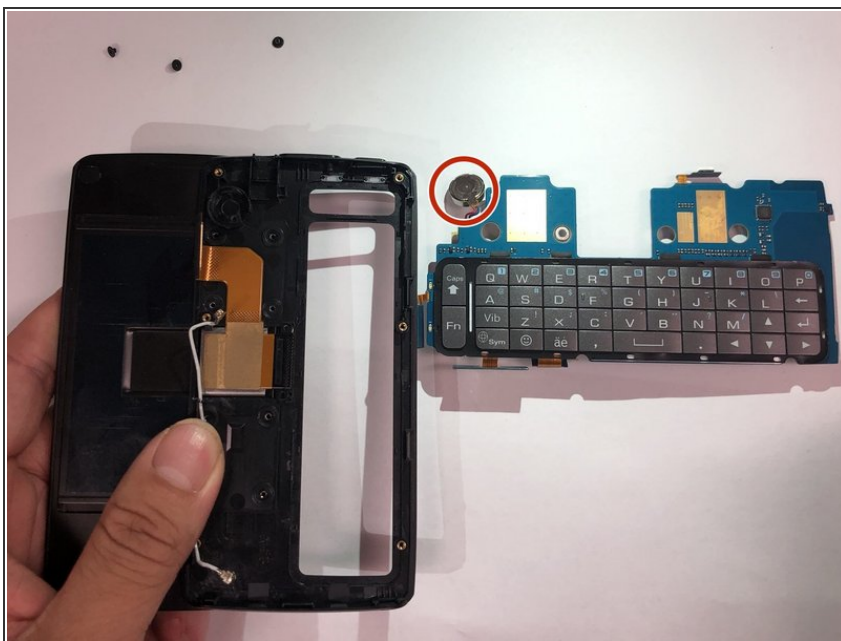
- Peel off the tape to expose the hidden screw.
- Remove one 1mm PH000 screw.
- ☑ Replacement tape might be needed.

Step 10



- Pry off the board from the side using the metal spudger tool.
- Disconnect the antenna.

Step 11



- Remove the keyboard assembly from the main frame.
- ⓘ The keyboard cover is loose.
- ⓘ Make sure to pull the small keyboard battery out with the whole assembly

To reassemble your device, follow these instructions in reverse order.