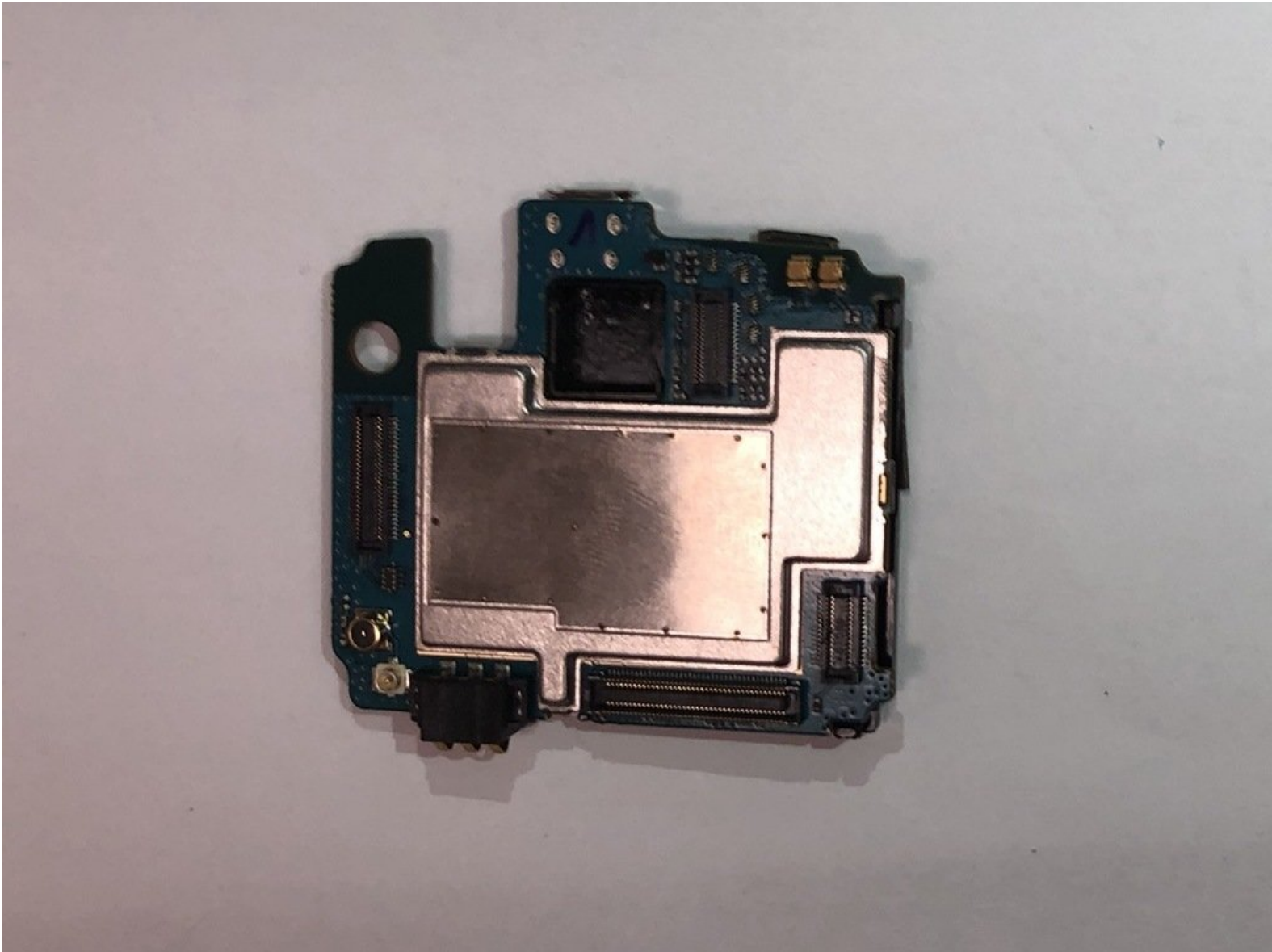




LG GW910 Motherboard Replacement

How to replace an LG GW910 motherboard.

Written By: Jonas Ke



INTRODUCTION

This guide will assist you while you take your phone apart. This disassemble is not a very difficult task. There will be a few connectors that will be disconnected during the process. Make sure to be cautious with them so they do not rip. There are many little screw that will be taken off the phone. Make sure that you have a clean and organized work space.



TOOLS:

- [iFixit Opening Tools](#) (1)
- [Metal Spudger](#) (1)
- [Phillips #000 Screwdriver](#) (1)

Step 1 — Motherboard



- Remove the back cover by firmly pressing the triangle and push upwards.
- Lift the bottom section to remove the cover.

Step 2



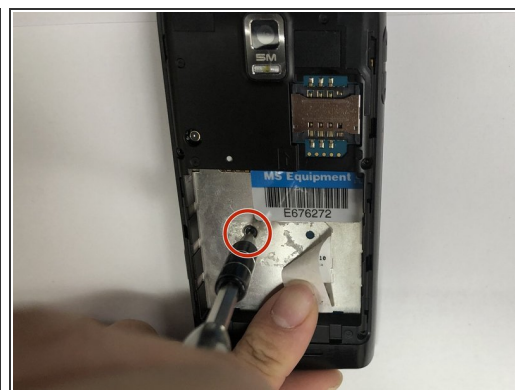
- Remove the battery by lifting from the bottom.

Step 3



- Remove six 3mm PH000 screws.

Step 4



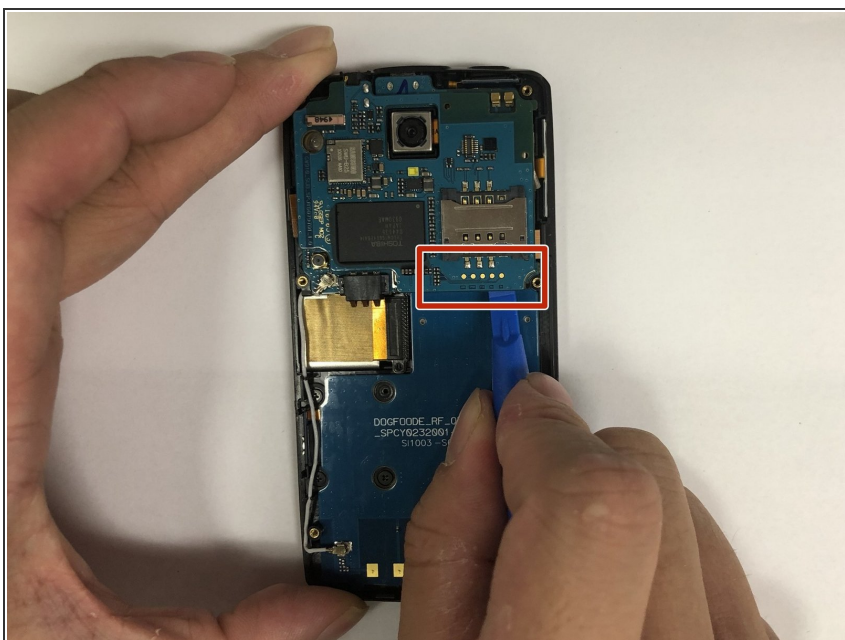
- Peel off the sticker with the metal spudger.
- Remove one 1mm PH000 screw.

Step 5



- Pry open all four sides of the back-frame gently, using the metal spudger.
- ⓘ The back-frame should come out easily.
- ⚠ Volume button and shutter button may fall out during the process.

Step 6



- Pry off the connector using the iFixit opening tool to remove the communication board.

Step 7



- Pry off the connectors using the iFixit opening tool.
- Disconnect the antenna using the iFixit opening tool.
- ⓘ The motherboard should be able to be removed easily.

To reassemble your device, follow these instructions in reverse order.