



# LG GizmoGadget VC200 Battery Replacement

LG GizmoGadget battery replacement

Written By: mikebuy78



## INTRODUCTION

The entire watch is nearly held by gaskets and double side tape.. Once you open it, the gasket will need to be replaced, I never found anyone selling the gasket, I don't know the waterproof ratings if any, so I'm sure they'll be gone

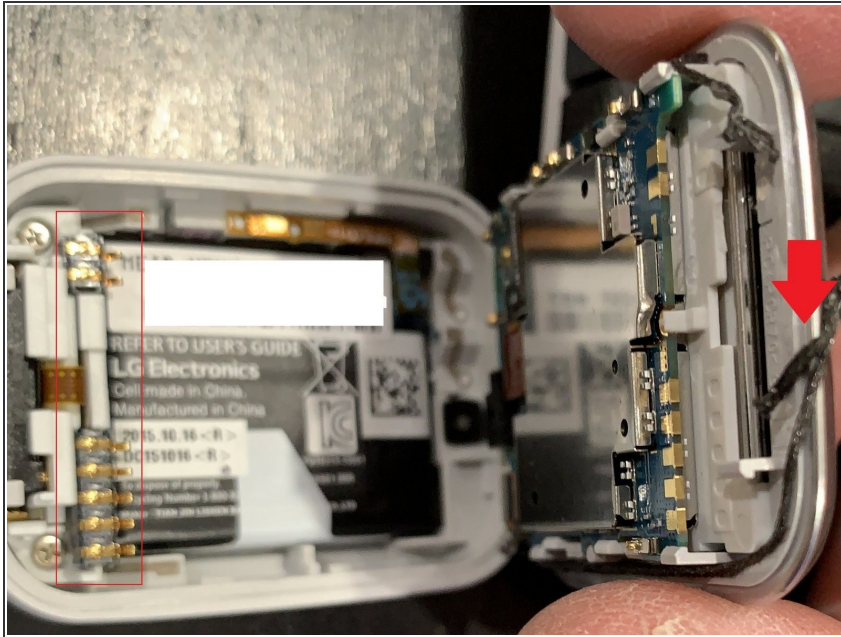
I only got this watch 2 years ago and the battery itself is from 2015, so its been sitting for 2 years on top of that. Recently the watch was fully charged and by 9-10am, I get an alert on the phone that the watch had shut off.

## Step 1 — Battery



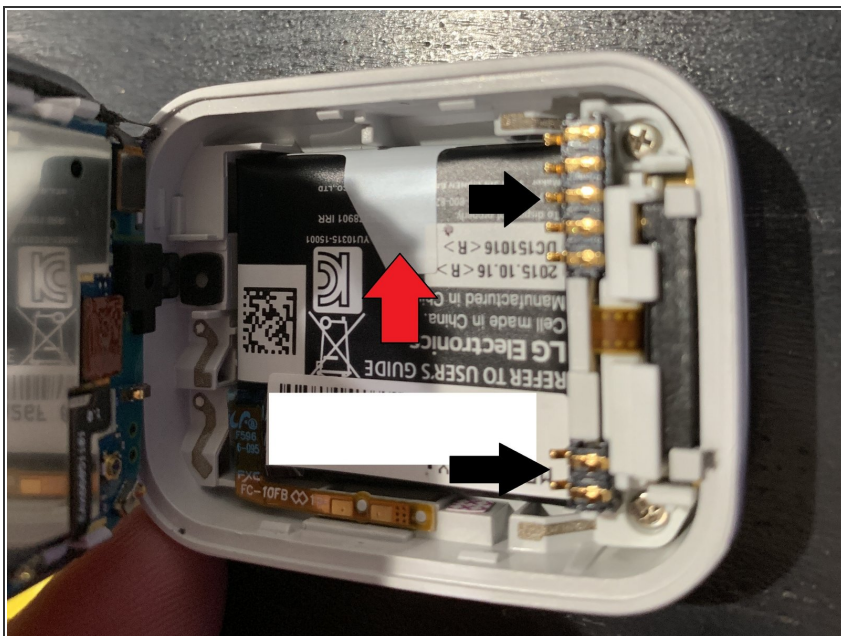
- Pick any sides, and just wedge a flat pick to pop it open. Its held by gasket. I choose the top. work out well for me

## Step 2



- Try to keep some of the gaskets on the right, some will be tangle up, you can cut those out. The pin connectors on the left, they are not glue down so if you drop them, just put them back

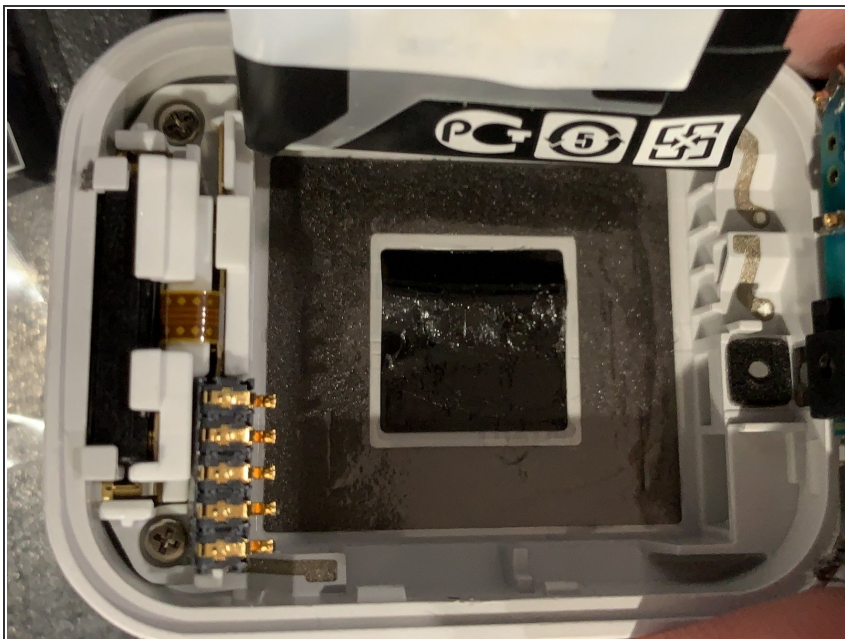
## Step 3



- Use the pull tab to pull out the battery.. if it doesn't pull out, wedge something under it.. the one I had was pretty weak, pulled out easier.



## Step 4



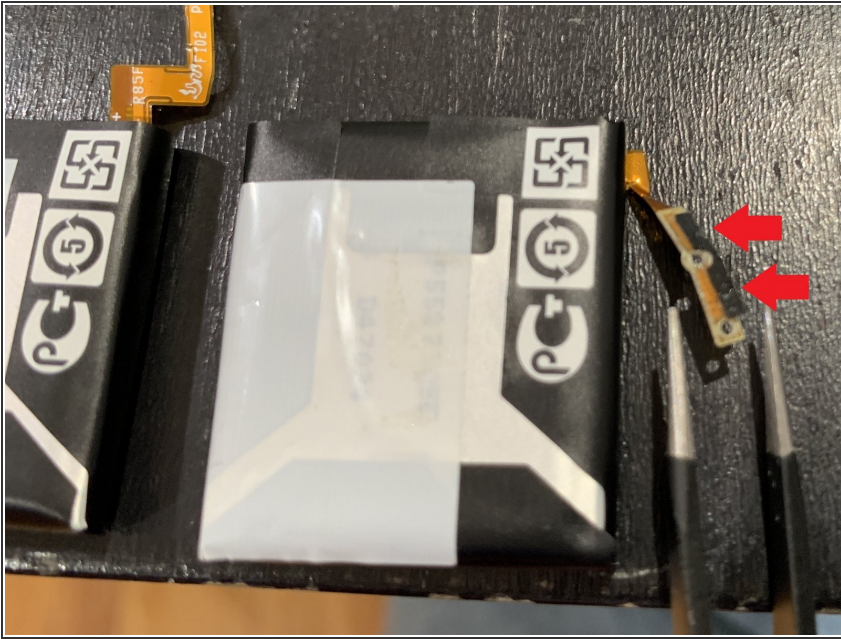
- Battery is out.

## Step 5



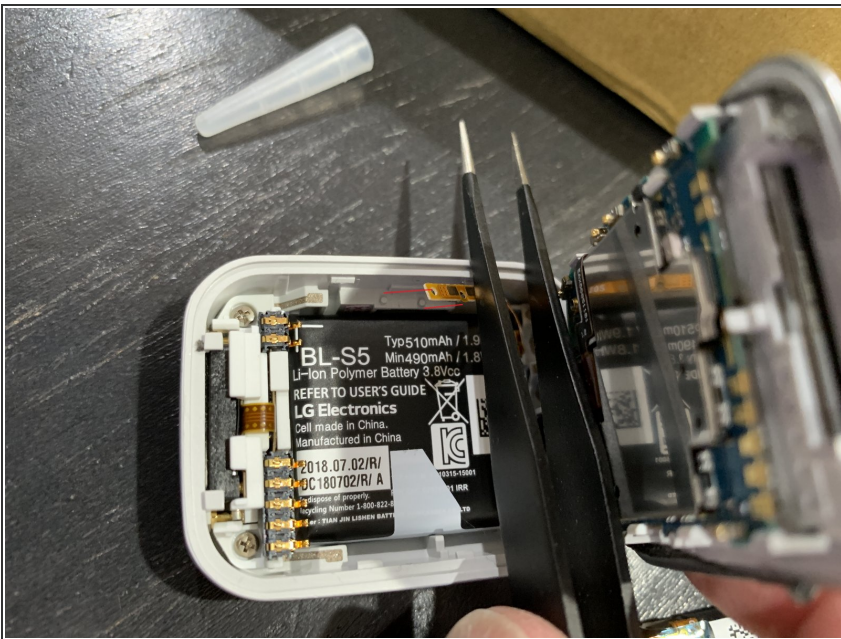
- New vs old. Just bend the new battery connector similar to the old battery

## Step 6



- From the old connector, transfer the double side tape and put it into the new battery

## Step 7



- Place the new battery in and match the battery pigtail to the watch case. There are 2 dimples where you match to the pig tale. Once all the parts are secure, just snap the face back and do a test. Make sure everything still works, calling, texting, touch screen.

## Step 8



- BL-S5 is the battery part number

To reassemble your device, follow these instructions in reverse order.