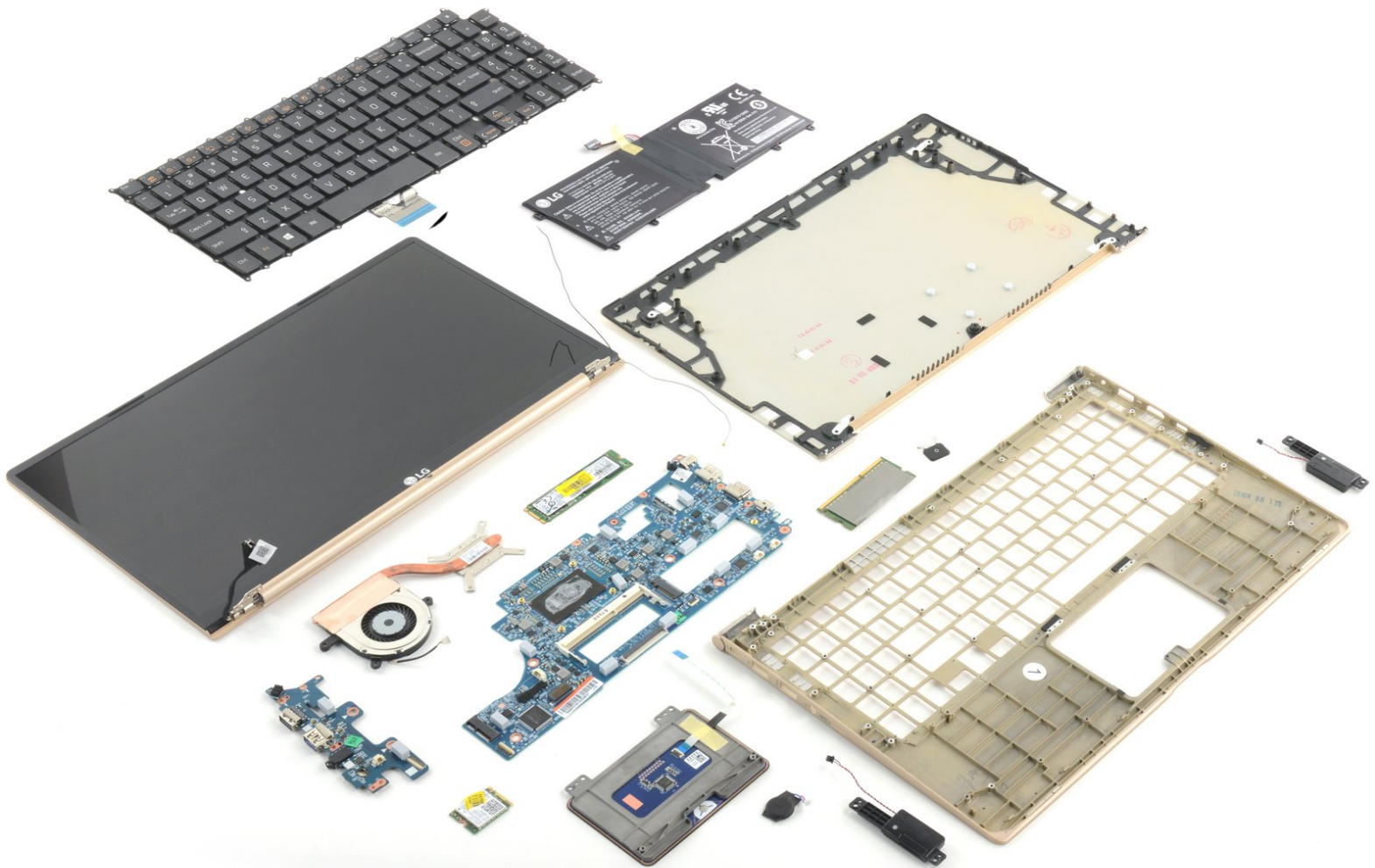




Written By: Jeff Suovanen



INTRODUCTION

We disassembled the LG Gram 15" to see how the Surface/MacBook competitor stacks up.



TOOLS:

- [Tweezers](#) (1)
 - [Phillips #0 Screwdriver](#) (1)
 - [iFixit Opening Picks set of 6](#) (1)
-

Step 1 — LG Gram 15" Repairability Assessment



- Reference shot with packaging.

Step 2



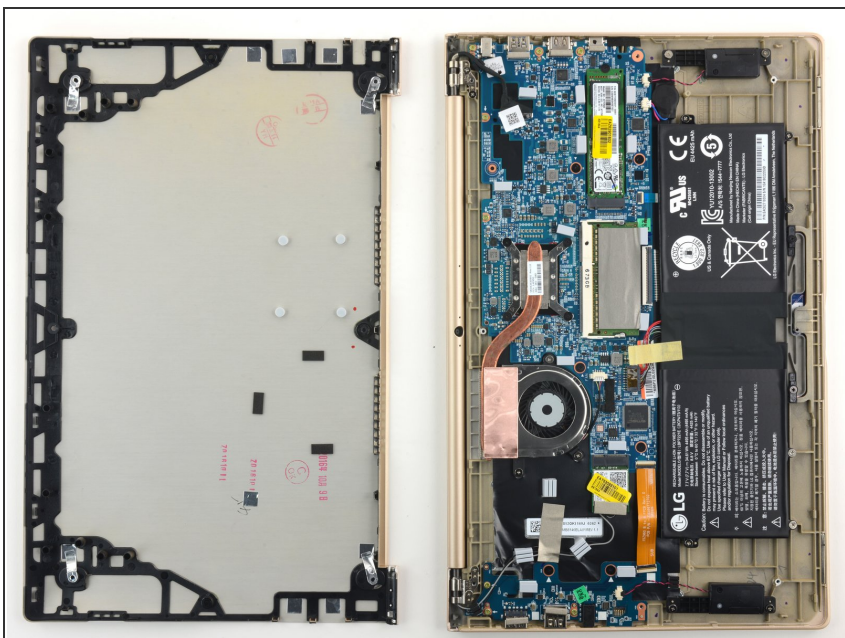
- Reference shots.

Step 3



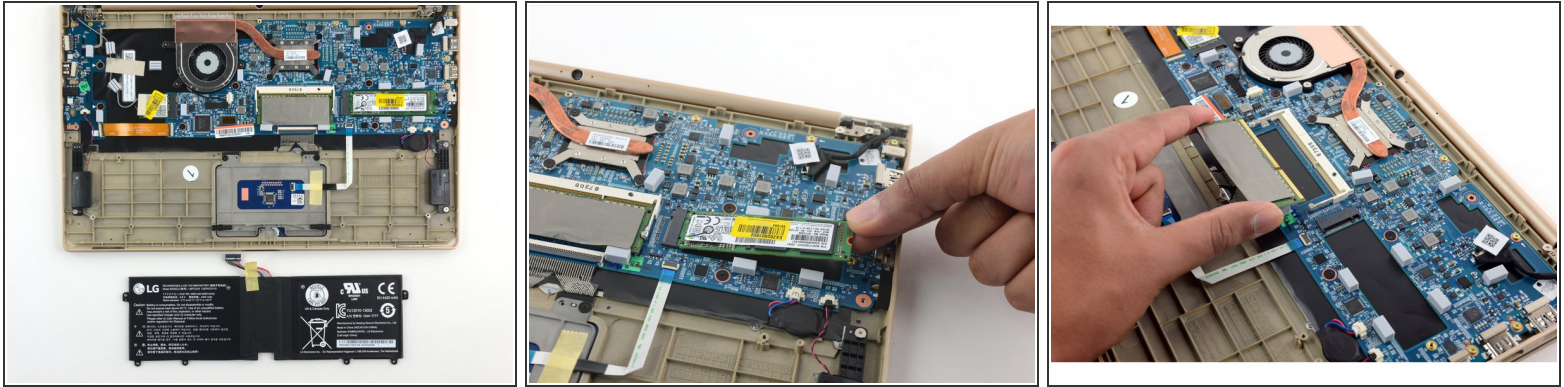
- We first use tweezers to remove the three plastic screw covers and five rubber bumpers.
- We find eight Phillips screws holding the case together.
- After removing the screws, we use picks to remove the lower case which is held in with clips.

Step 4



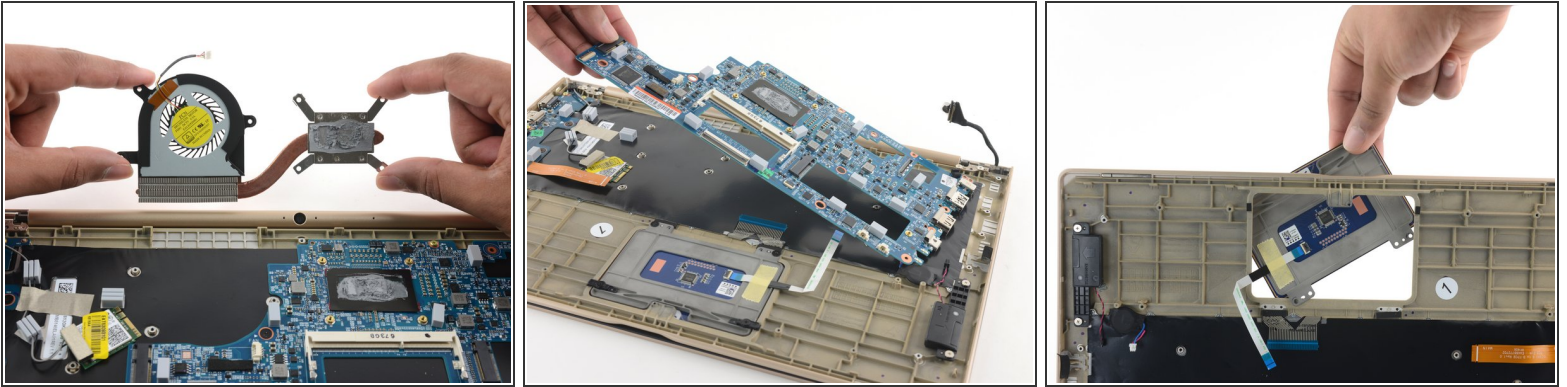
- Lower case is removed to view the internals.

Step 5



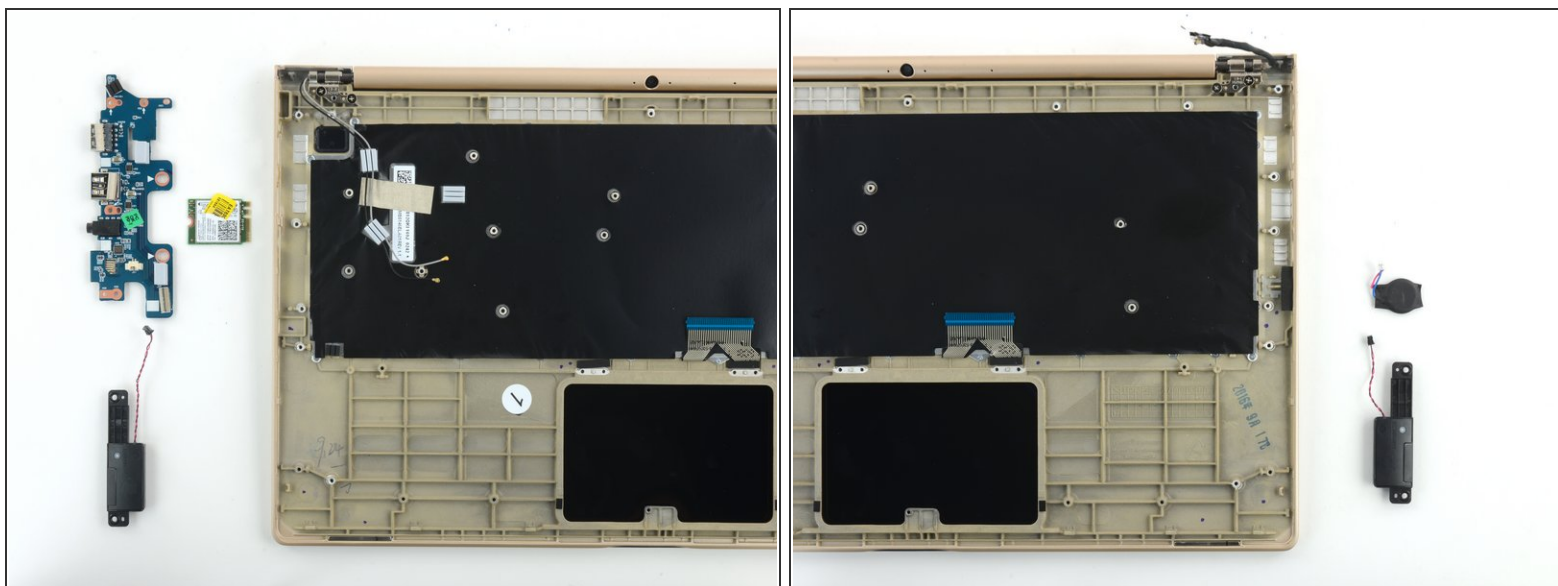
- Battery comes out easily—just 6 screws and a connector on the motherboard.
- SSD is standard and user-upgradable.
- RAM is also standard and user-upgradable.
- At this time, it's cool to note that you can remove the display assembly, speakers, daughterboard, backup battery, motherboard, trackpad, and the fan.
- ❗ Perhaps slightly more useful knowledge: The only component we cannot remove is the keyboard.

Step 6



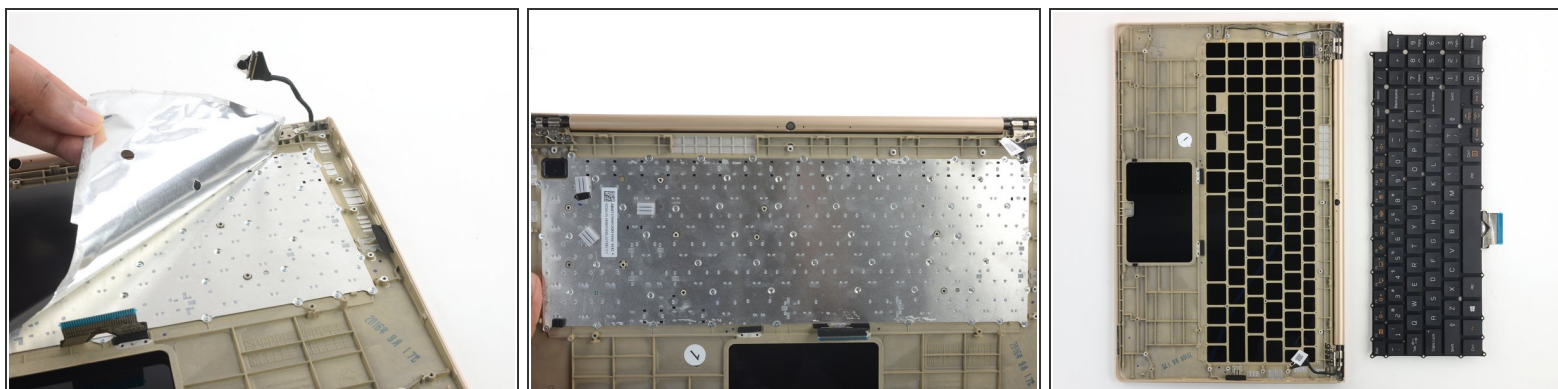
- We chose the fan + heatpipe combo. 7 screws and 1 plug
- Followed closely by the motherboard. No surprises. In total < 10 screws, exactly 6 connectors, and the wireless card.
- There were some alignment pins that required a *tiny* bit of finagling, but if you know they're there this will take you less than a minute.
- Trackpad's next. It's held in with 4 screws and pops out the top of the lower case.

Step 7



- I/O board, wireless card, speakers, and CMOS battery.
- ❗ The speakers were held in with adhesive to supplement a pair of screws, but it peeled off the case cleanly and we could reuse it when reassembling the unit.

Step 8



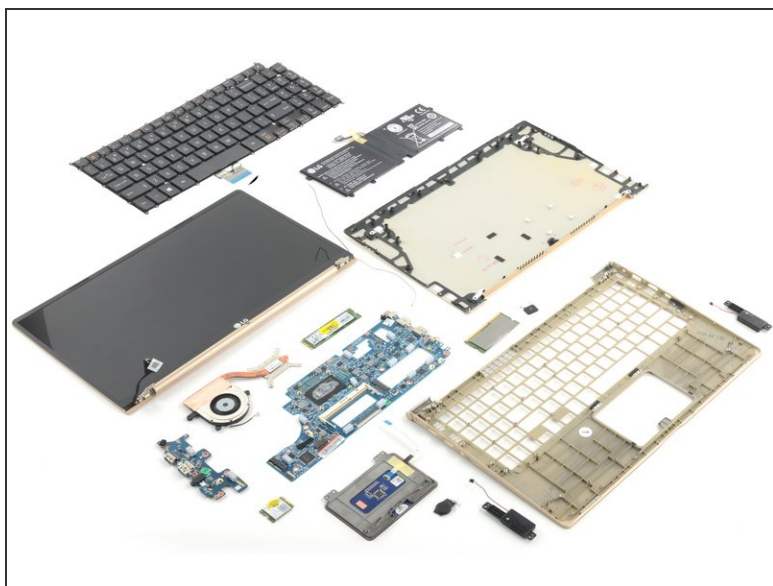
- Keyboard is hidden beneath thin-film insulator taped in place. If you're performing a keyboard replacement, you'll need to buy replacement adhesive for this film.
- It's held in place with 48 screws, which sounds bad, but is par for the course for a repairable laptop. Here, the lack of glue in a laptop this compact is practically a miracle.

Step 9



- Four screws later, the display assembly is free from the lower case.

Step 10



REPAIRABILITY SCORE:



- The LG Gram 15" earns a **9 out of 10** on our repairability scale (10 is the easiest to repair):
 - Most components are immediately accessible after removing the lower case cover.
 - RAM and SSD are user-replaceable and parts for upgrades are readily accessible.
 - Battery is also user-replaceable.
 - Only Phillips screws are used throughout the device.
 - Manufacturer does not provide user-accessible repair documentation.