



LG Incite Back Panel Replacement

This guide will show you how to remove the back panel of the LG Incite.

Written By: Kimberly Kha



INTRODUCTION

Many of the hardware repairs require access to the internal components of the device. This guide will show you how to remove the back panel of the LG Incite to access the internal hardware.

TOOLS:

- [Phillips #00 Screwdriver](#) (1)
 - [iFixit Opening Tools](#) (1)
-

Step 1 — Battery



- Flip the phone over and locate the back cover.

Step 2



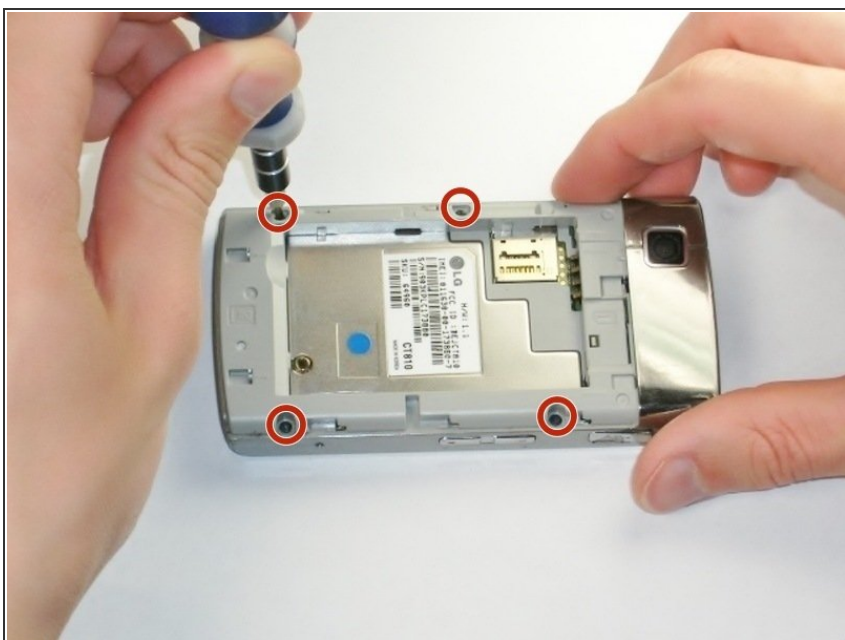
- Place your thumb under the camera, apply a little pressure, and slide the cover toward the bottom of the phone.

Step 3



- Place the plastic opening tool in the small slot in the bottom left-hand corner.
- Pry the battery upward to remove it.

Step 4 — Back Panel



- Using the #00 Philips screw driver, unscrew the four 4.5mm screws located on each side of the device.

Step 5



- Wedge the plastic opening tool between the screen and the case.
- Gently move the tool along the edge to loosen the screen from the casing. Repeat this for the entire outer edge of the screen.
- ⓘ You should not completely separate the screen from the case in this step.

Step 6



- Flip your phone over to the battery side.
- Insert the plastic opening tool into the lower seam between the frame and front cover to separate the back panel.
- ⚠ Push the scroll wheel, located in the upper left corner, in while lifting the back cover off to prevent breaking it.
- ⚠ The volume, lock, and camera buttons are loose so don't lose them.

To reassemble your device, follow these instructions in reverse order.

This document was generated on 2019-09-18 05:52:20 PM (MST).

