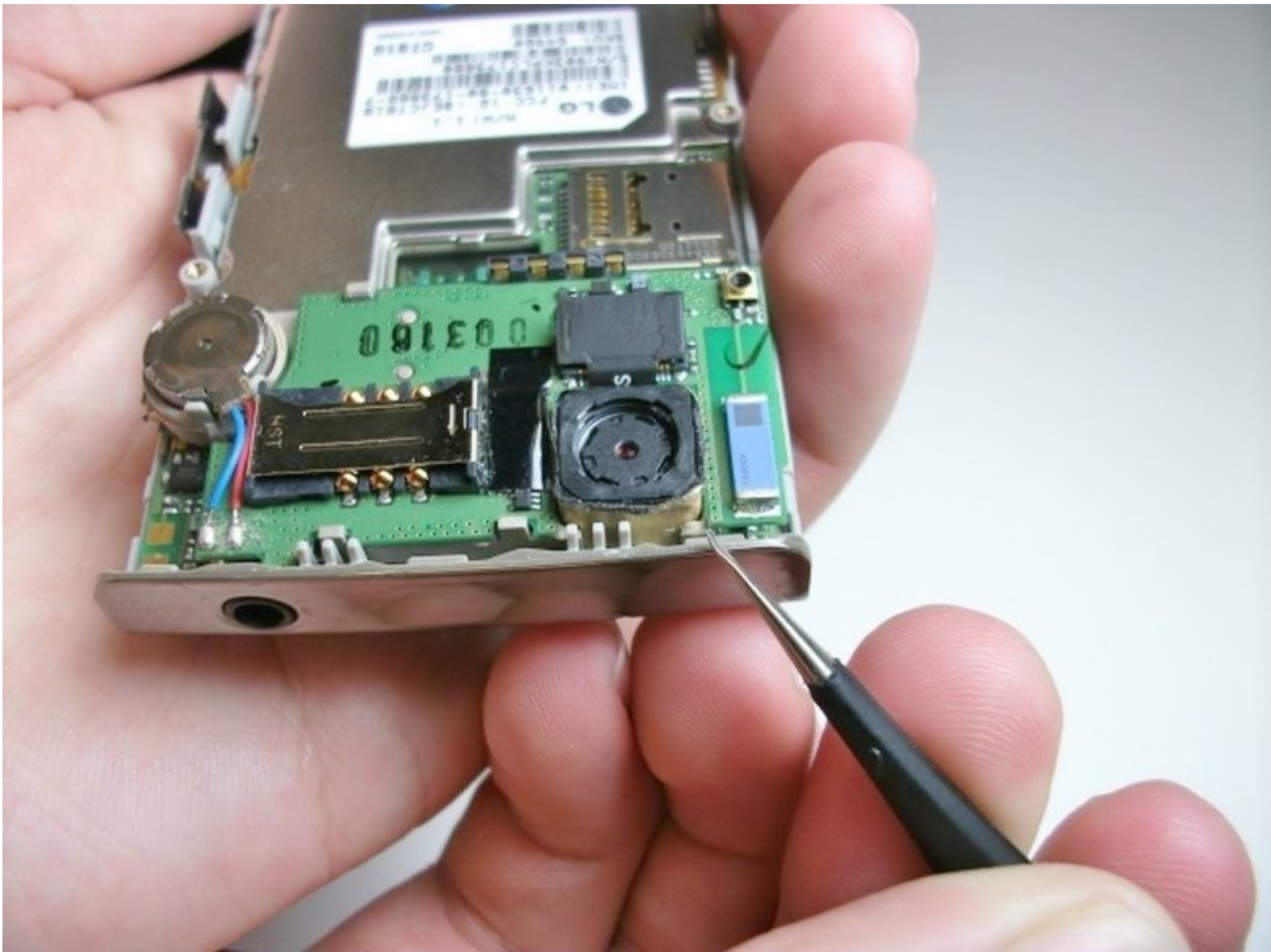




# LG Incite Camera Replacement

This guide will show you how to remove your phone's camera.

Written By: Kimberly Kha



---

## INTRODUCTION

If your phone's camera breaks or you would like to update it, this guide will show you how to install your phone's camera.



### TOOLS:

- [Tweezers](#) (1)
-

## Step 1 — Battery



- Flip the phone over and locate the back cover.

## Step 2



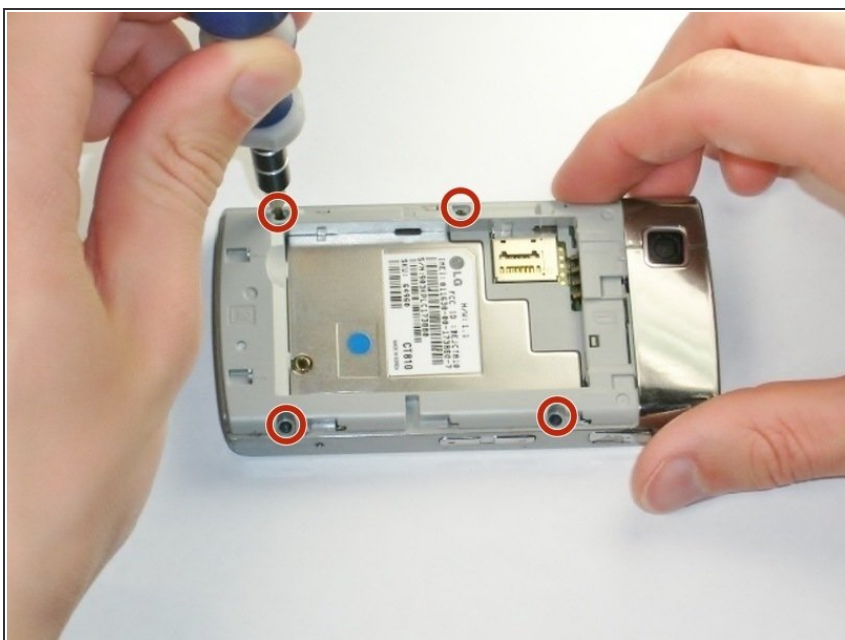
- Place your thumb under the camera, apply a little pressure, and slide the cover toward the bottom of the phone.

## Step 3



- Place the plastic opening tool in the small slot in the bottom left-hand corner.
- Pry the battery upward to remove it.

## Step 4 — Back Panel



- Using the #00 Philips screw driver, unscrew the four 4.5mm screws located on each side of the device.

## Step 5



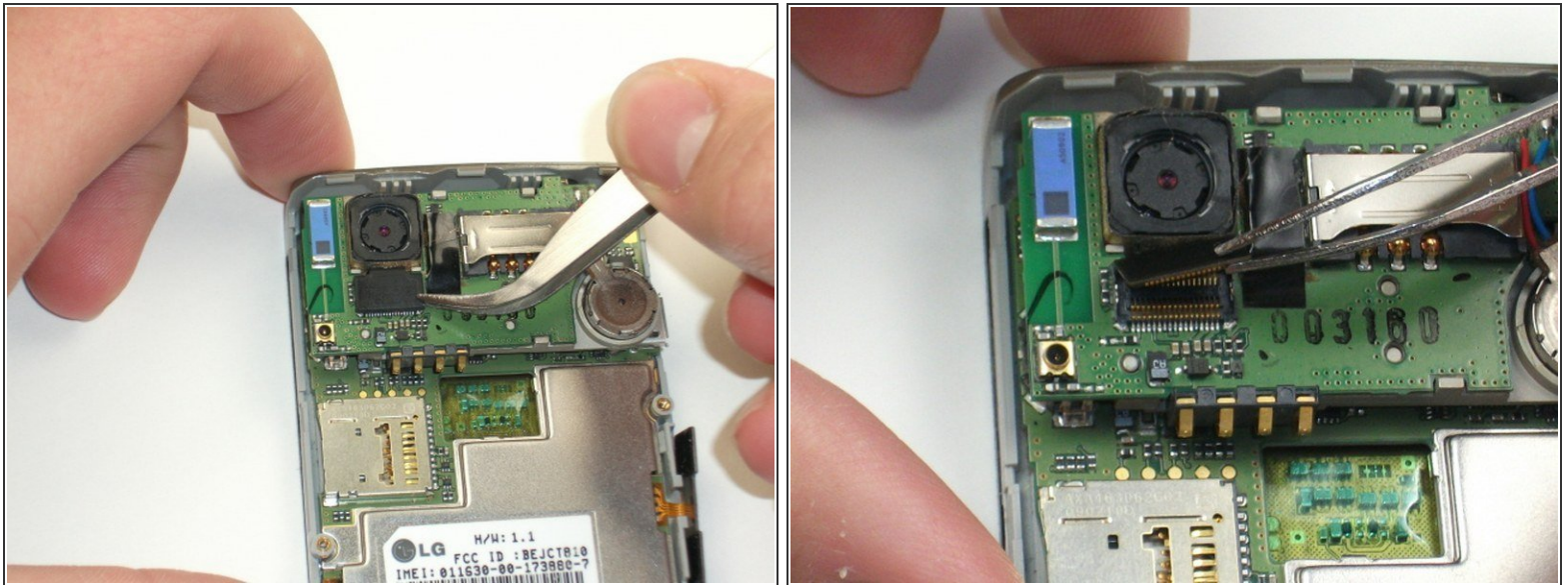
- Wedge the plastic opening tool between the screen and the case.
- Gently move the tool along the edge to loosen the screen from the casing. Repeat this for the entire outer edge of the screen.
- ⓘ You should not completely separate the screen from the case in this step.

## Step 6



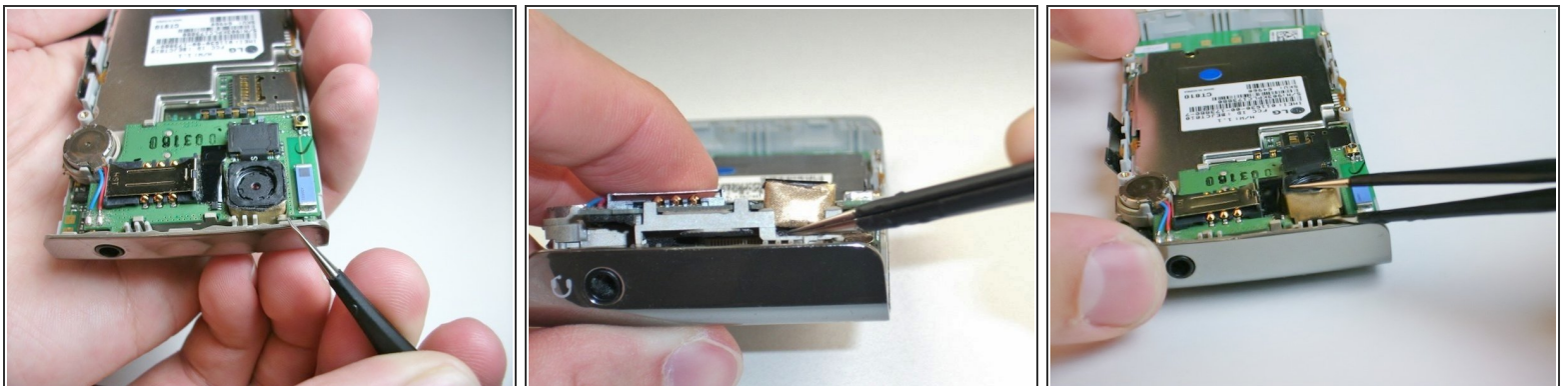
- Flip your phone over to the battery side.
- Insert the plastic opening tool into the lower seam between the frame and front cover to separate the back panel.
- ⚠ Push the scroll wheel, located in the upper left corner, in while lifting the back cover off to prevent breaking it.
- ⚠ The volume, lock, and camera buttons are loose so don't lose them.

## Step 7 — Camera



- Locate the camera near the upper left-hand side and use the metal tweezers to detach the black tab.

## Step 8



- Carefully slide the edge of the metal tweezers underneath the camera and lift it out.

⚠ Do not puncture the gold lining the camera.

*i* The camera is glued in so there will be a little resistance.

To reassemble your device, follow these instructions in reverse order.