



LG Incite Motherboard Replacement

This guide will show you how to safely and properly remove your phone's motherboard.

Written By: Kimberly Kha



INTRODUCTION

If your phone's motherboard is faulty, this guide will show you how to safely replace it.



TOOLS:

- [iFixit Opening Tools](#) (1)
- [Tweezers](#) (1)
- [Phillips #00 Screwdriver](#) (1)



PARTS:

- [LG Incite CT810 motherboard](#) (1)

Step 1 — Battery



- Flip the phone over and locate the back cover.

Step 2



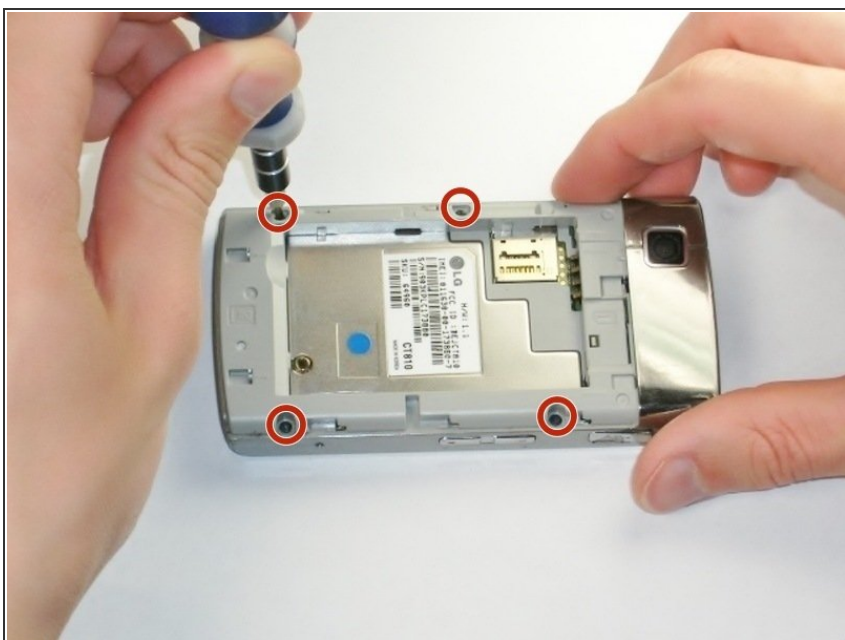
- Place your thumb under the camera, apply a little pressure, and slide the cover toward the bottom of the phone.

Step 3



- Place the plastic opening tool in the small slot in the bottom left-hand corner.
- Pry the battery upward to remove it.

Step 4 — Back Panel



- Using the #00 Philips screw driver, unscrew the four 4.5mm screws located on each side of the device.

Step 5



- Wedge the plastic opening tool between the screen and the case.
- Gently move the tool along the edge to loosen the screen from the casing. Repeat this for the entire outer edge of the screen.
- ⓘ You should not completely separate the screen from the case in this step.

Step 6



- Flip your phone over to the battery side.
- Insert the plastic opening tool into the lower seam between the frame and front cover to separate the back panel.
- ⚠ Push the scroll wheel, located in the upper left corner, in while lifting the back cover off to prevent breaking it.
- ⚠ The volume, lock, and camera buttons are loose so don't lose them.

Step 7 — Motherboard



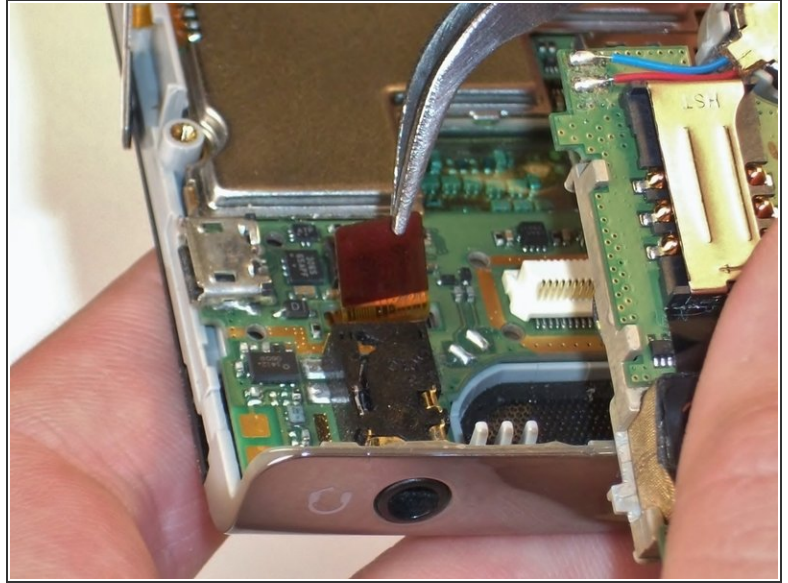
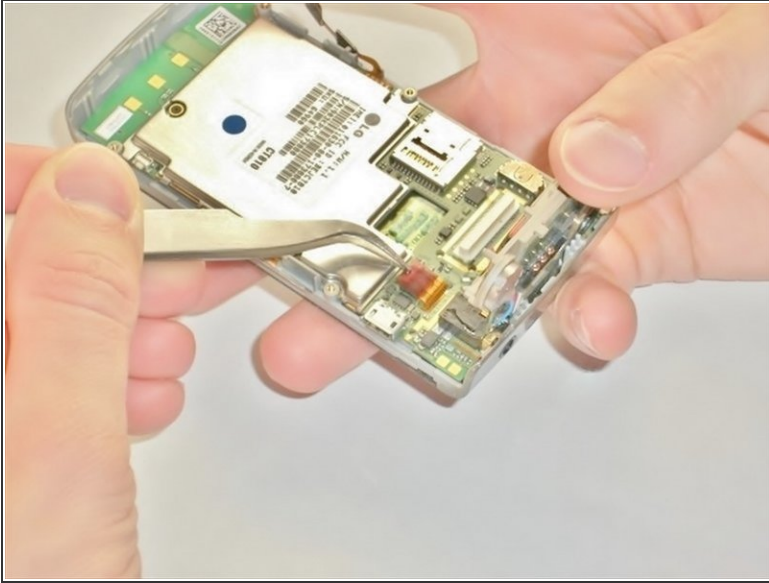
- Use the metal tweezers to gently peel the yellow tab from the left edge of the phone at the two plastic bases.
 - ⚠ Do not completely remove the tab from the body, it should still be connected to the phone by the orange plastic.
- Repeat this for the white tab on the opposite side of the phone.
 - ⓘ This tab also has two plastic bases adhering it to the edge of the phone.

Step 8



- Insert your plastic opening tool underneath the speaker/camera panel, and gently pry it upwards.
 - ⚠ Do not fully remove the panel! It should still be attached to the motherboard by a red and black wire.

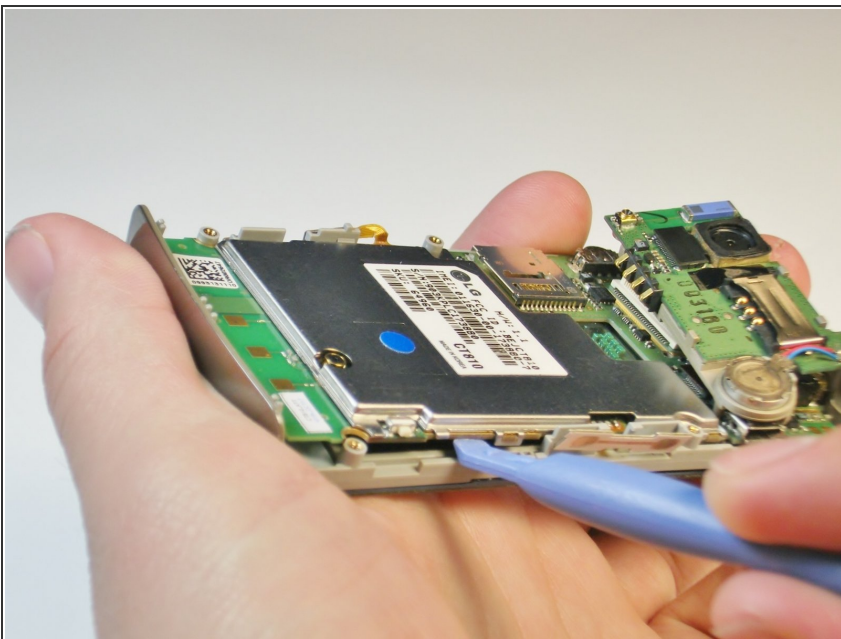
Step 9



- Use the metal tweezers to gently lift the edge of the maroon tab, it should pop up easily.

⚠ Do not remove the tab completely, it should still be connected to the phone.

Step 10



- Insert the plastic opening tool underneath the motherboard towards the bottom edge of the phone and gently pry it from its case.
- Lift the motherboard and slide it towards you by hand to free it from the phone.

⚠ The call and end buttons may fall out when the motherboard is removed! Don't lose the buttons.

To reassemble your device, follow these instructions in reverse order.