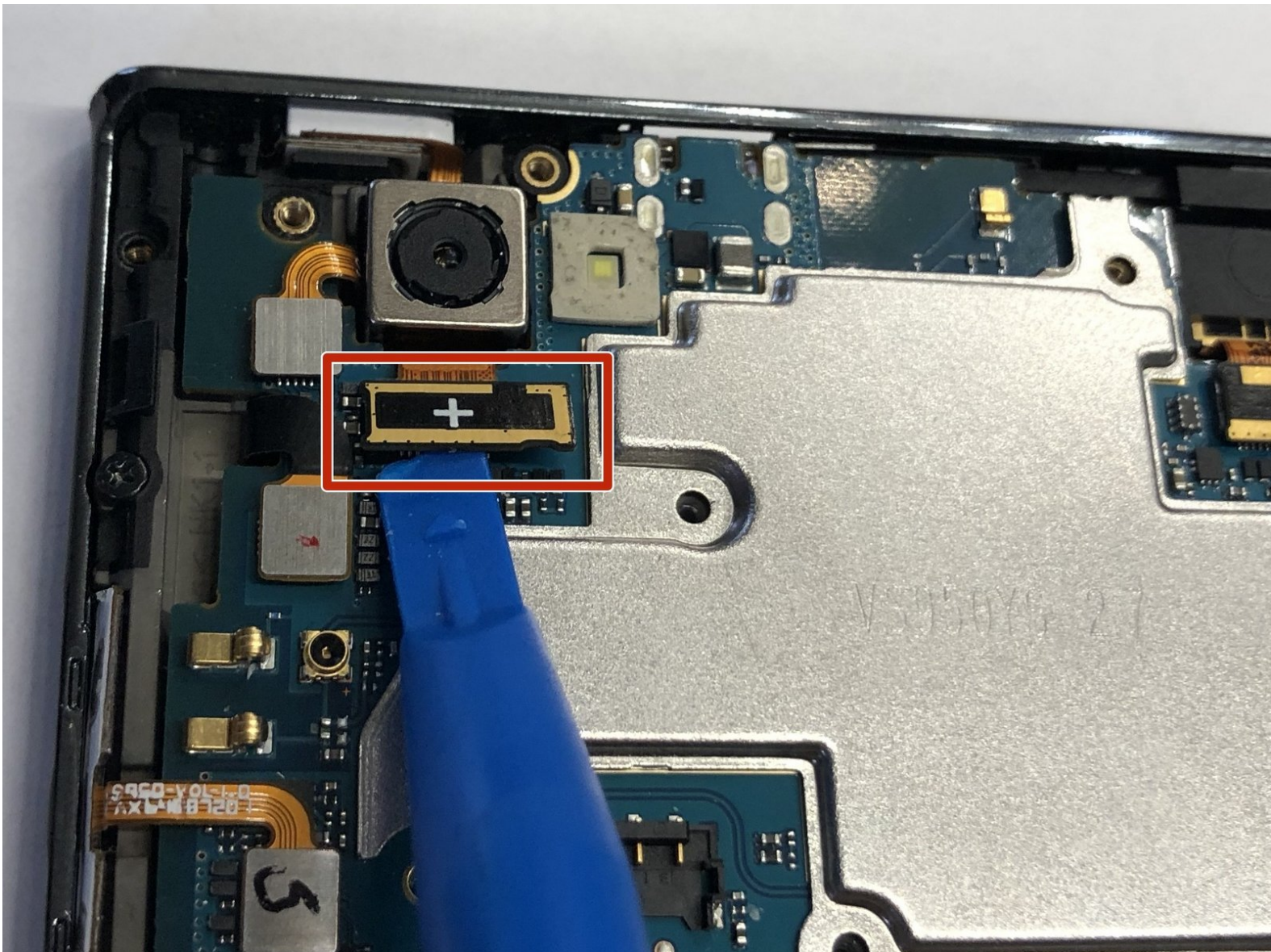




LG Intuition Camera Replacement

This guide will replace the camera in your LG Intuition.

Written By: Thomas Morrissey



INTRODUCTION

If your camera fails or will not turn on, use this guide to replace your camera.



TOOLS:

- [Phillips #0 Screwdriver](#) (1)
 - [Phillips #00 Screwdriver](#) (1)
 - [iFixit Opening Tools](#) (1)
-

Step 1 — Battery



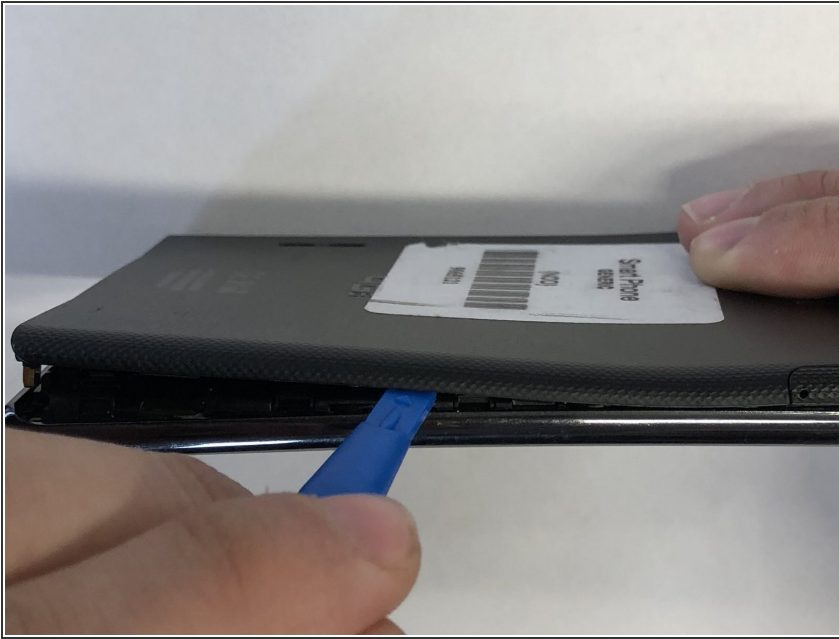
- Turn the device so the two bottom screws are shown.

Step 2



- Remove the two 7mm screws holding the back panel of the phone using the P5 bit and magnetic driver.

Step 3



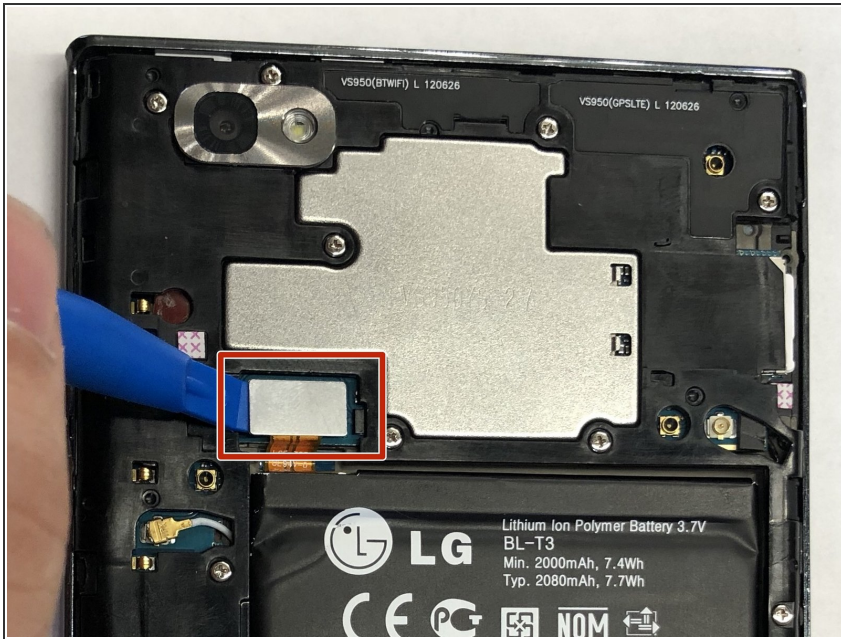
- Carefully use the plastic opening tool to pry the back panel of the phone from the front screen. This will expose the battery and other parts.

Step 4



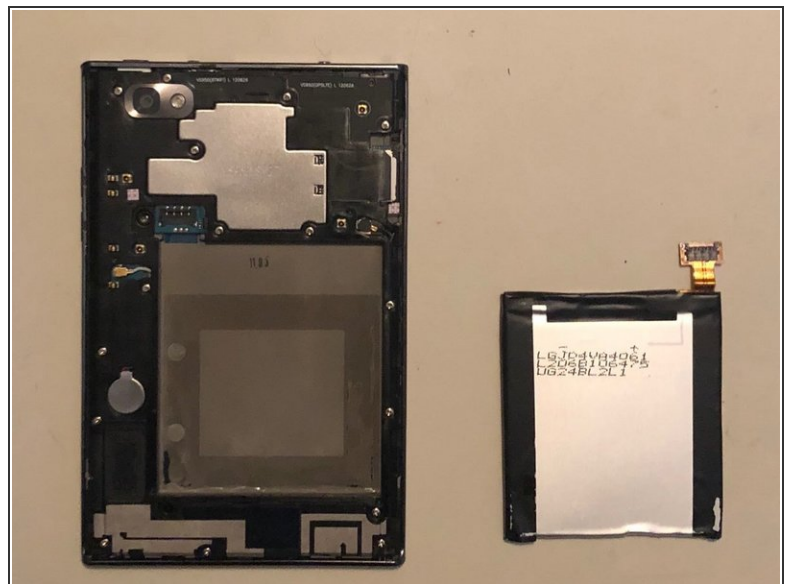
- Use the Phillips #0 screwdriver to remove the 5mm screw holding the metal bracket that protects the battery's ribbon cable.

Step 5



- Carefully use the plastic opening tool to pry the ribbon cable connecting the battery to the motherboard of the phone.

Step 6



- Gently raise the battery from its compartment.

Step 7 — Plastic Motherboard Shield



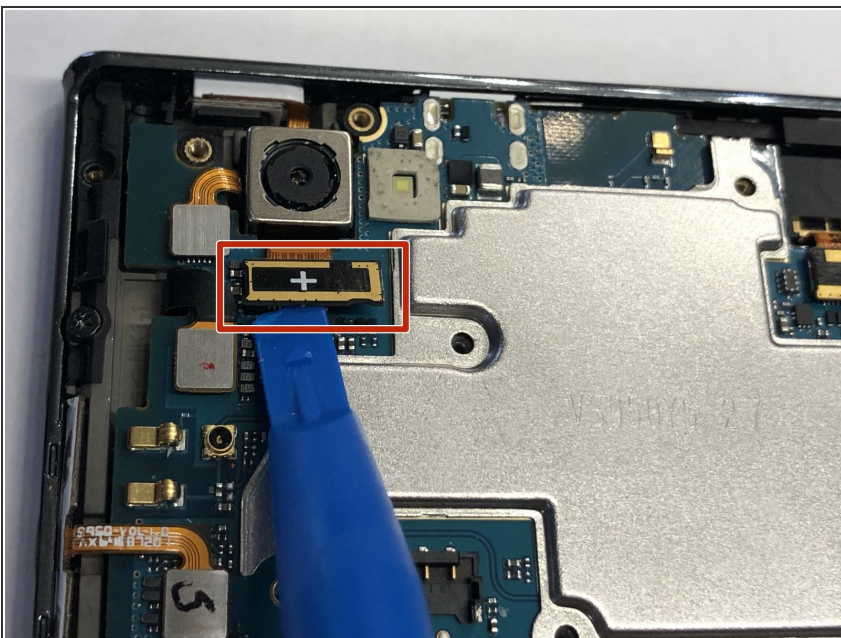
- Remove the thirteen 5mm screws holding the plastic shield covering the motherboard using the Phillips #00 screwdriver.

Step 8



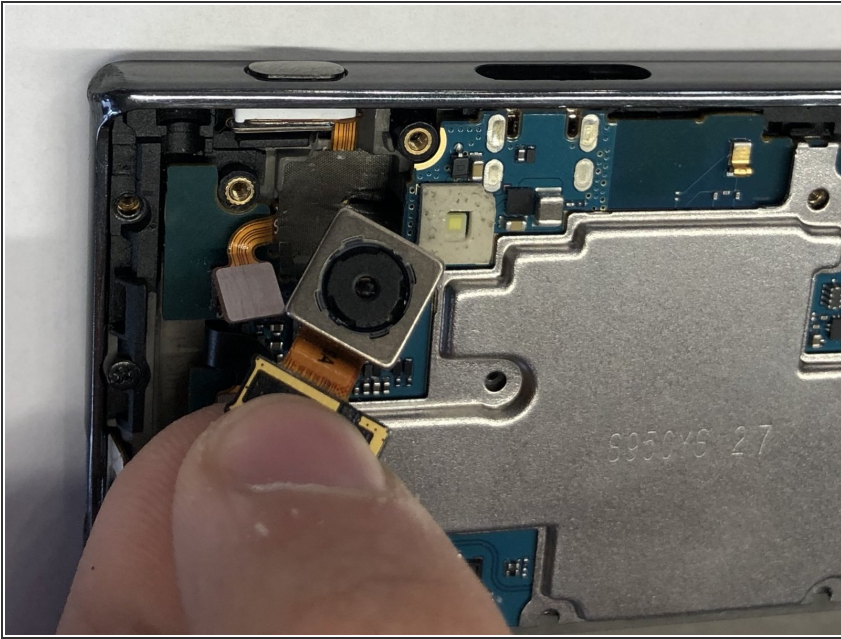
- Carefully use the plastic opening tool to pry the plastic shield from the motherboard. This will expose the motherboard and ribbon cables for each component.

Step 9 — Camera



- Carefully use the plastic opening tool to pry the ribbon cable below the camera itself from the motherboard.

Step 10



- Using the ribbon beneath the camera lift it upwards and pull the camera out.

To reassemble your device, follow these instructions in reverse order.