



# LG Intuition Plastic Motherboard Shield Replacement

This guide gives a general overview of how to remove the plastic shield inside the LG Intuition.

Written By: Thomas Morrissey



---

## INTRODUCTION

This guide will help shorten the steps of each guide required for the replacement of each component.

---

### TOOLS:

- [Phillips #0 Screwdriver](#) (1)
  - [iFixit Opening Tools](#) (1)
  - [Phillips #00 Screwdriver](#) (1)
-

## Step 1 — Battery



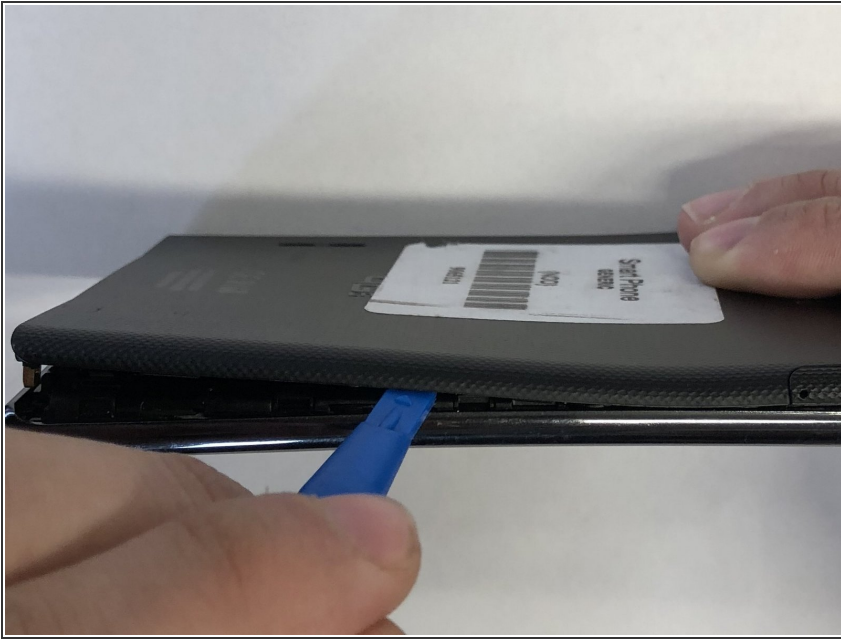
- Turn the device so the two bottom screws are shown.

## Step 2



- Remove the two 7mm screws holding the back panel of the phone using the P5 bit and magnetic driver.

### Step 3



- Carefully use the plastic opening tool to pry the back panel of the phone from the front screen. This will expose the battery and other parts.

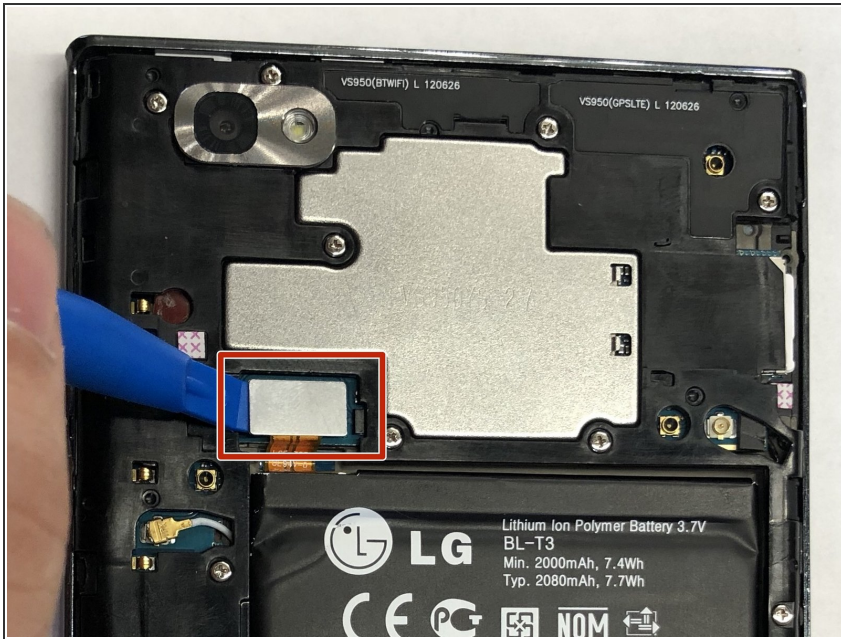
### Step 4



- Use the Phillips #0 screwdriver to remove the 5mm screw holding the metal bracket that protects the battery's ribbon cable.

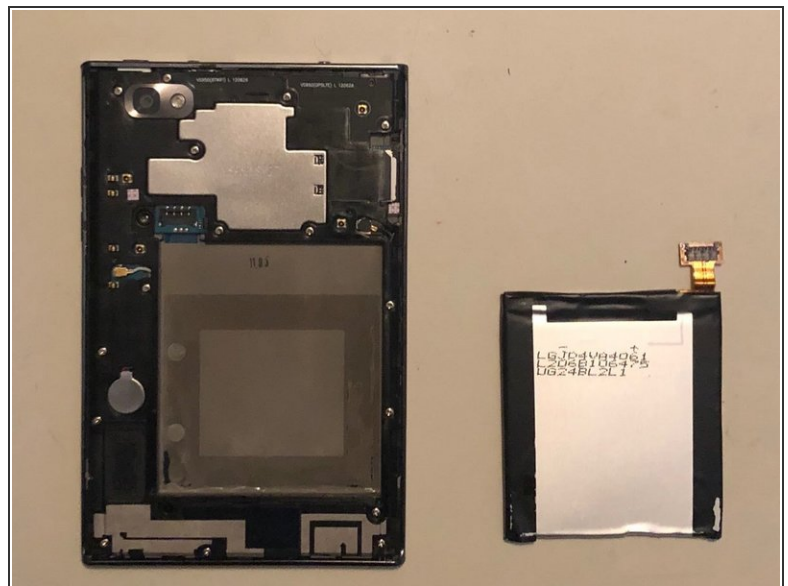


## Step 5



- Carefully use the plastic opening tool to pry the ribbon cable connecting the battery to the motherboard of the phone.

## Step 6



- Gently raise the battery from its compartment.

## Step 7 — Plastic Motherboard Shield



- Remove the thirteen 5mm screws holding the plastic shield covering the motherboard using the Phillips #00 screwdriver.

## Step 8



- Carefully use the plastic opening tool to pry the plastic shield from the motherboard. This will expose the motherboard and ribbon cables for each component.

To reassemble your device, follow these instructions in reverse order.