



# LG K10 Front Facing Camera Replacement

This video shows you how to replace the front camera in an LG K10 smartphone.

Written By: Witrigs





## TOOLS:

- [Tweezers](#) (1)
- [Phillips #00 Screwdriver](#) (1)
- [iFixit Opening Picks set of 6](#) (1)



## PARTS:

- [LG K10 Front Facing Camera Replacement](#) (1)

## Step 1 — Front Facing Camera



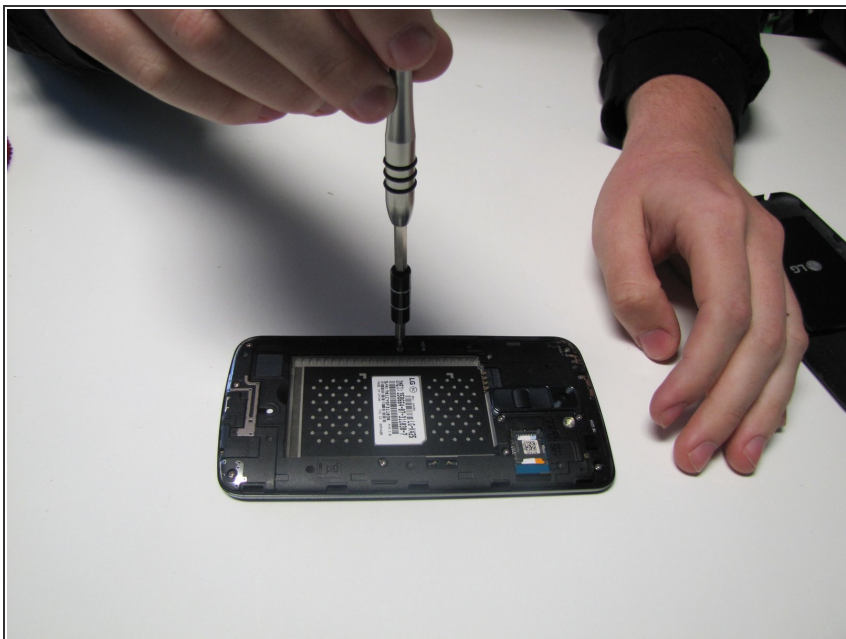
- Power off the device.

## Step 2



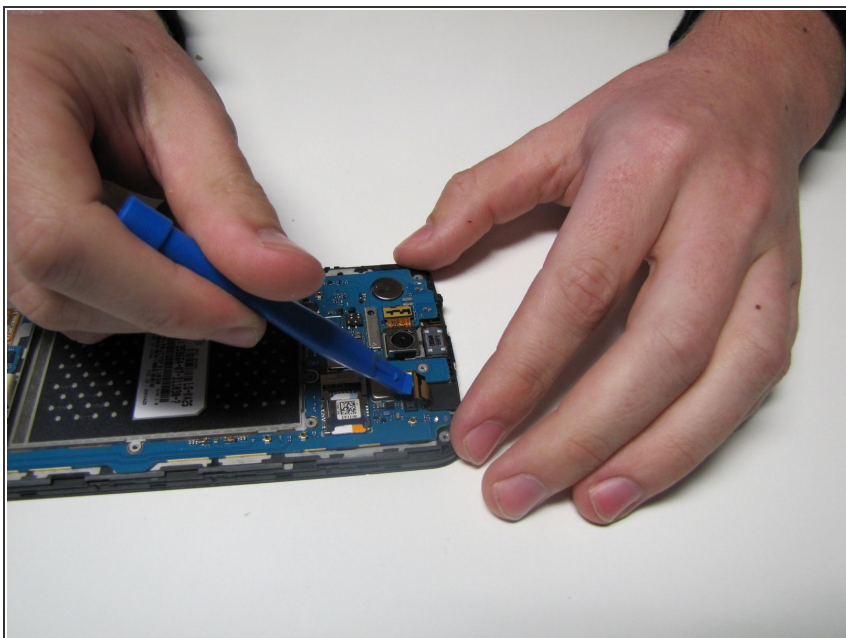
- Remove the battery

### Step 3



- Unscrew every screw of the bottom of the phone and use guitar picks to remove the plastic frame of the phone

### Step 4



- With tweezers remove the front facing camera piece on the motherboard, and insert the new piece in the position of the old one.

## Step 5



- Insert the battery and back case.

To reassemble your device, follow these instructions in reverse order.