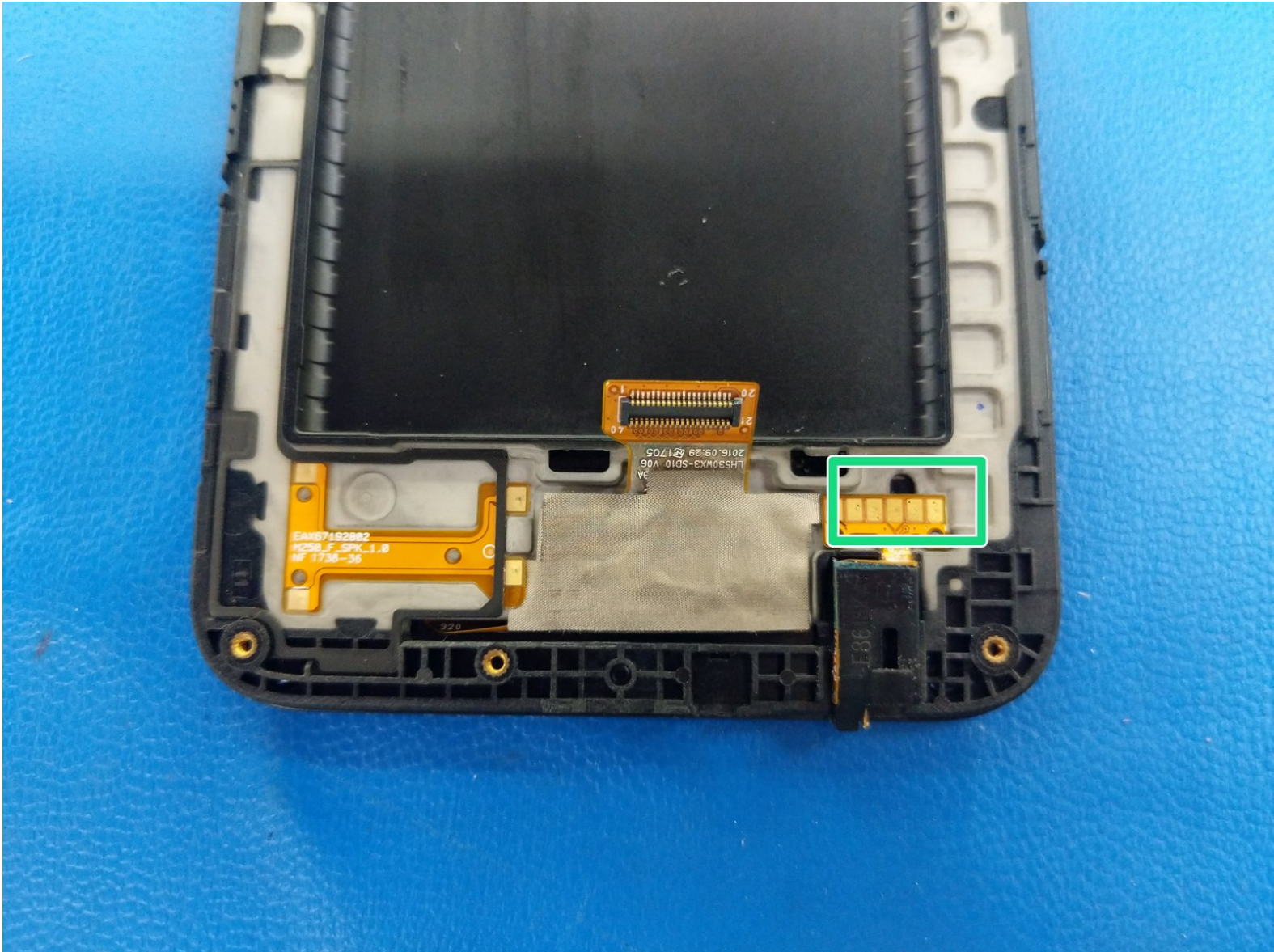




LG K20 PLUS Headphone Jack Replacement

Written By: Patrick





TOOLS:

- [Phillips #00 Screwdriver](#) (1)
 - [iFixit Opening Picks set of 6](#) (1)
 - [Halberd Spudger](#) (1)
 - [Heat Gun](#) (1)
-

Step 1 — Remove the back cover and battery



- Remove the back cover by inserting a fingernail or opening pick here and disengaging the plastic clips.
- Lift battery up here

Step 2 — Midframe



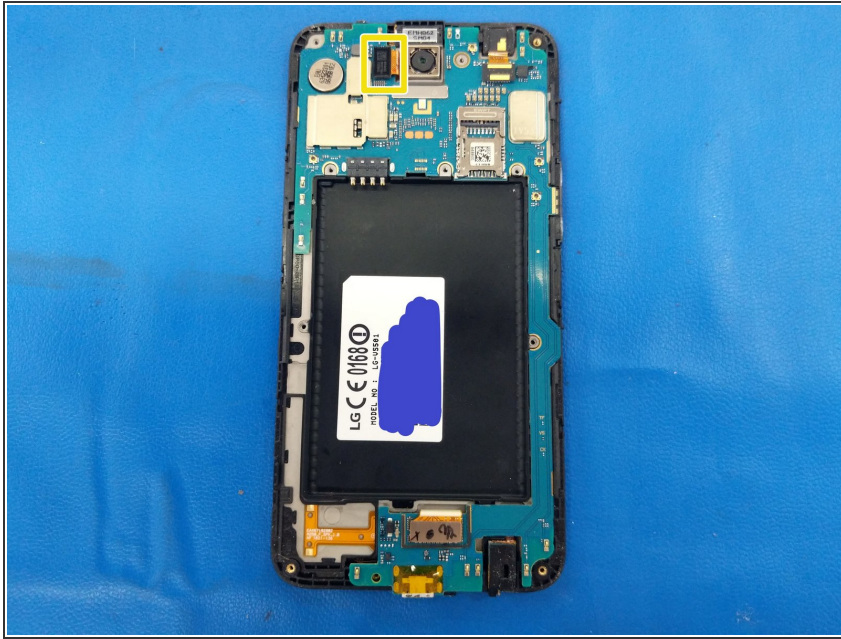
- Remove 11 Philips screws.

Step 3



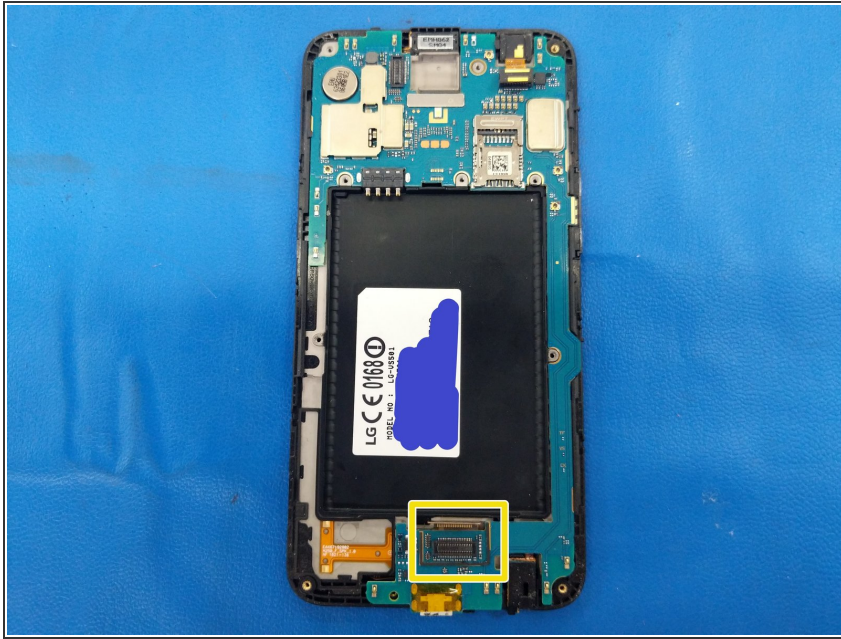
- Use fingernails or insert an opening pick into the gap between the digitizer and the midframe and pull the midframe outwards to disengage the plastic clips.
- Carefully disengage the clips on the bottom as the headphone jack goes through the midframe.
- Once all the clips have been disengaged, move the midframe outwards and downwards to disengage it from the headphone jack.

Step 4 — Rear-Facing Camera



- Use a Halberd spudger or an opening pick to disconnect the front camera flex from its connector on the motherboard.

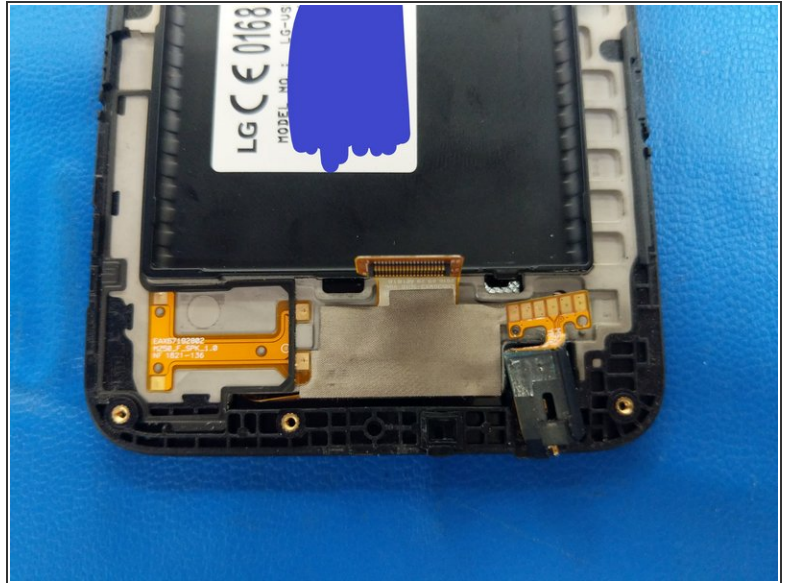
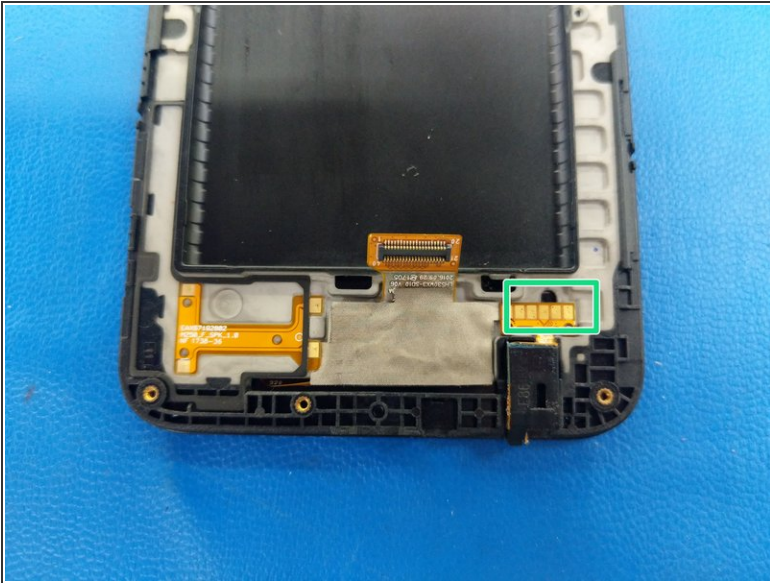
Step 5 — Motherboard Removal



- Using the tip of a Halberd spudger or an opening pick, disconnect the display flex cable from its socket on the motherboard.
 - Starting from the bottom, insert an opening pick between the motherboard and frame and lever apart.
- ⚠ Be careful not to break the long section of the motherboard.

- ⓘ The top part of the motherboard is lightly adhered to the frame.
- ★ After the motherboard is removed, compare the original and replacement part. Some components may already be installed on the replacement display assembly.

Step 6 — Separating the Headphone Jack



- The headphone jack is adhered to the frame, and its flex cable is adhered to the frame and the strip of Kapton tape.
- Use heat to soften the adhesive, then insert an opening pick here to separate the flex cable from the frame.
- Use an opening pick to pry around the headphone jack to separate it from the adhesive in its housing.
- ⓘ If you're only replacing the headphone jack, peel it off of the Kapton tape. If you're replacing the display, go to the next step.

To reassemble your device, follow these instructions in reverse order.