



LG L1200 Camera Replacement

Written By: Joshua Herrmann



INTRODUCTION

This guide will help you replace the camera in the phone.



TOOLS:

- [iFixit Opening Tools](#) (1)
 - [Spudger](#) (1)
 - [T6 Torx Screwdriver](#) (1)
-

Step 1 — Inner LCD Screen



- ⚠ Make sure you remove the battery by lifting the tab on the back of the phone before opening the case.
- Flip open the phone and locate the four screw covers.

Step 2



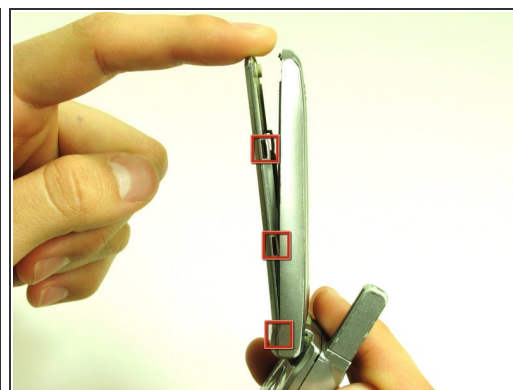
- Remove all four screw covers by using an iPod opening tool. They should come off relatively easy.

Step 3



- Using a T6 Torx screwdriver, remove all four screws.

Step 4



- Once the screws are removed, use an iPod opening tool to separate the front cover from the inner screen cover.
- Run the iPod opening tool down both sides, disconnecting the tabs that hold the covers together.

Step 5



- Pull the inner screen cover towards you and up in order to separate it from the front cover.

Step 6



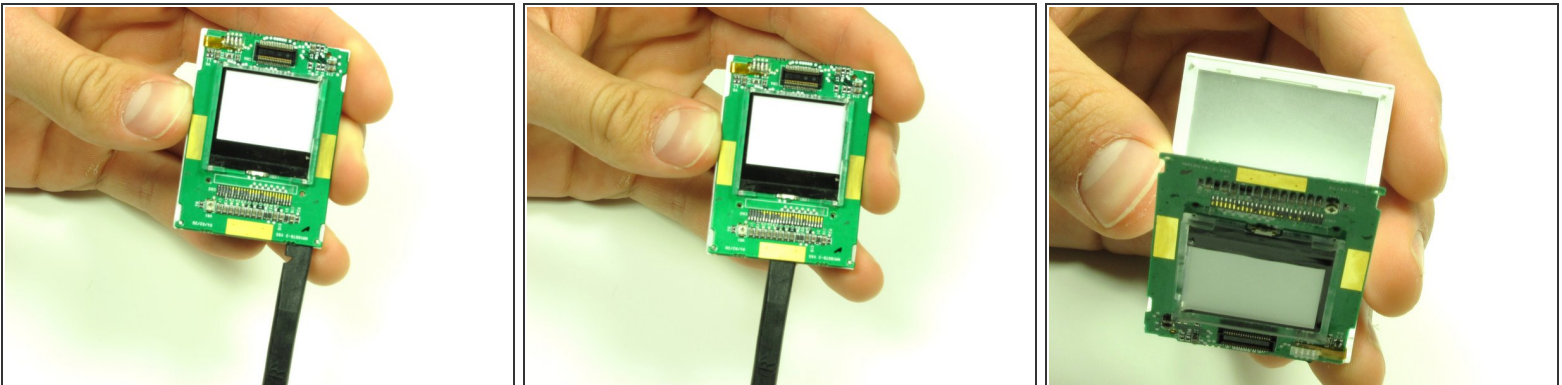
- Remove the tape from the bottom of the LCD screen.


Step 7



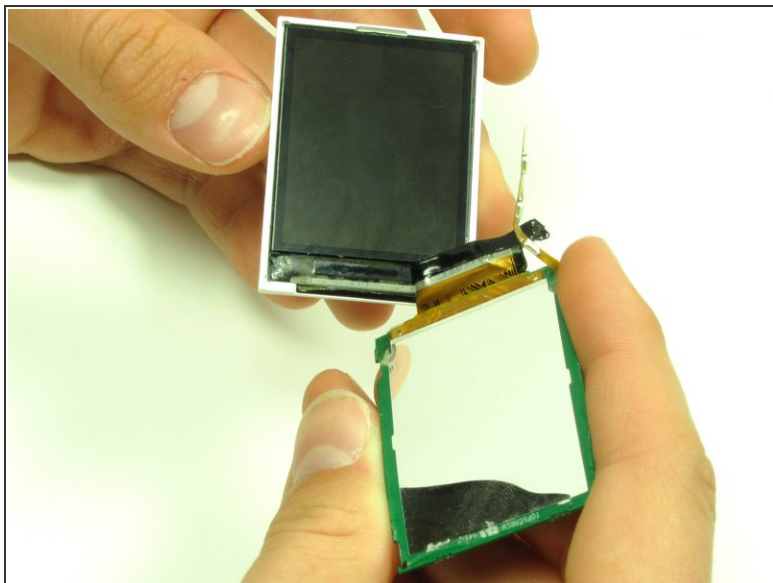
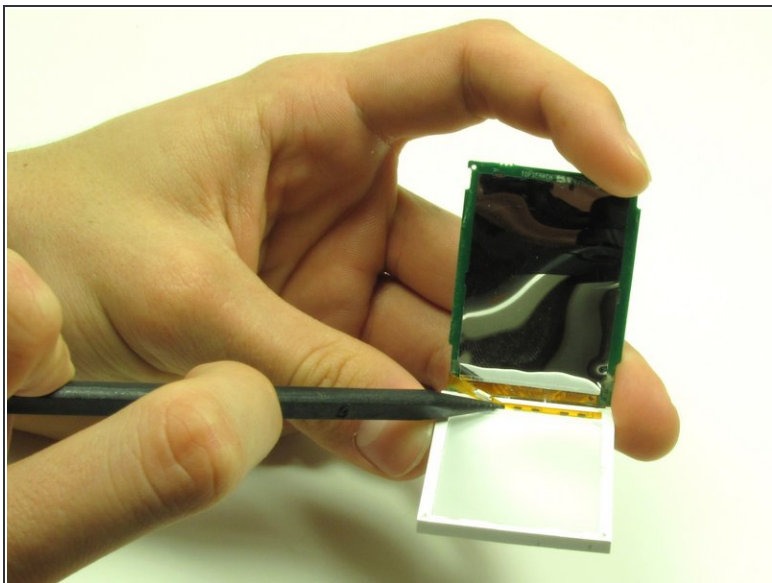
- Carefully lift the LCD screen and peel it from the gold ribbon. The sticky connection runs all the way around the LCD screen.

Step 8



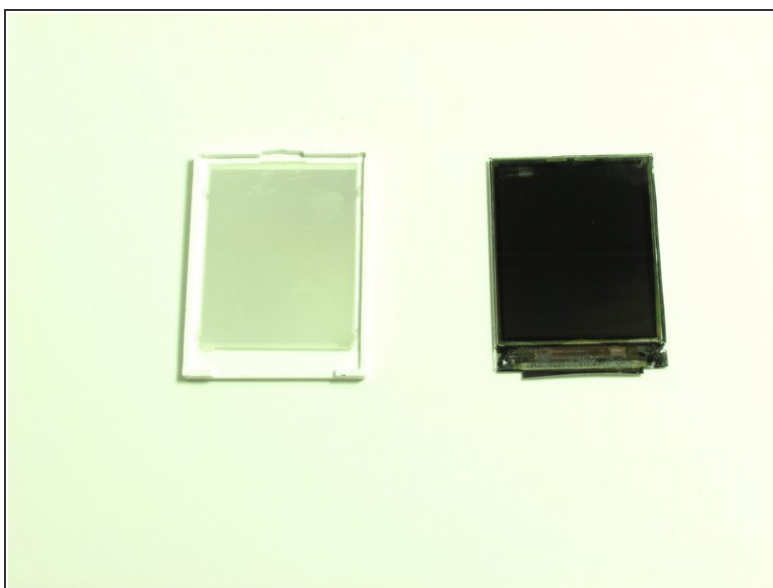
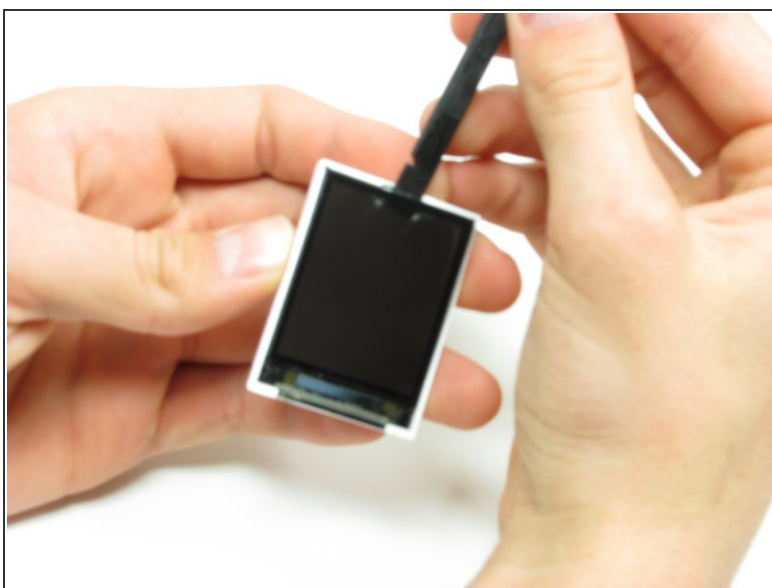
- Flip the screen over so that you can see the outer LCD screen and the circuit board.
 - Insert spudger in the bottom right corner.
 - Lift up and move the spudger across the bottom.
-  The third photo is rotated 180 degrees.

Step 9



- Use the pointy side of the spudger to peel off the interior tape.
- Flip the assembly over and peel the circuit board from the screen.

Step 10



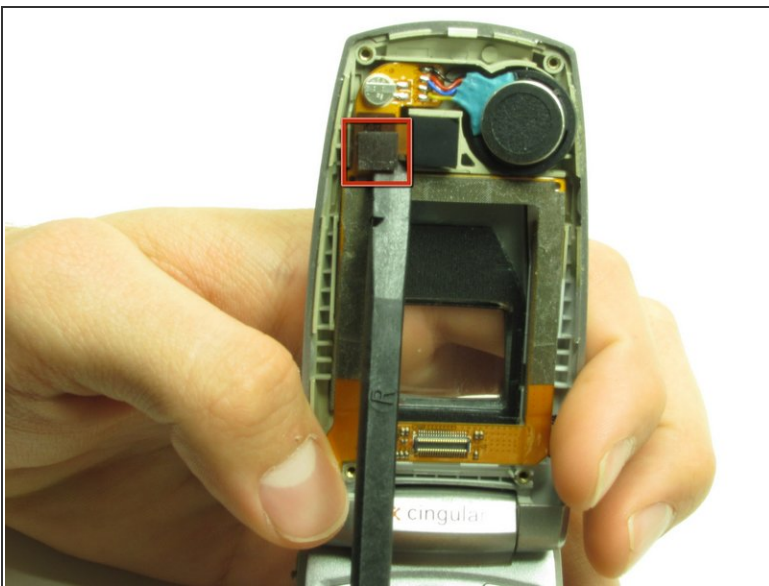
- Use the spudger to remove the LCD screen from its backing.

Step 11 — Camera



- Carefully slide the spudger behind the main ribbon in order to separate it from the inside cover of the phone.

Step 12



- Use a spudger to pop off the camera ribbon from the main ribbon. The camera component should separate entirely.

To reassemble your device, follow these instructions in reverse order.

This document was generated on 2019-09-23 01:05:54 PM (MST).

