



# LG L1200 External Housing Replacement

Written By: Joshua Herrmann



---

# INTRODUCTION

This guide will help you remove the external housing and replace it.



## TOOLS:

- [iFixit Opening Tools](#) (1)
  - [Spudger](#) (1)
  - [T6 Torx Screwdriver](#) (1)
-

## Step 1 — Inner LCD Screen



- ⚠ Make sure you remove the battery by lifting the tab on the back of the phone before opening the case.
- Flip open the phone and locate the four screw covers.

## Step 2



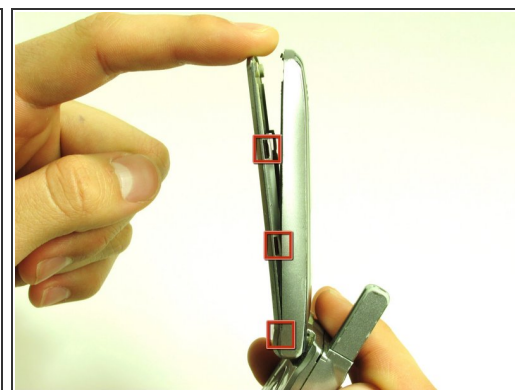
- Remove all four screw covers by using an iPod opening tool. They should come off relatively easy.

### Step 3



- Using a T6 Torx screwdriver, remove all four screws.

### Step 4



- Once the screws are removed, use an iPod opening tool to separate the front cover from the inner screen cover.
- Run the iPod opening tool down both sides, disconnecting the tabs that hold the covers together.



## Step 5



- Pull the inner screen cover towards you and up in order to separate it from the front cover.

## Step 6



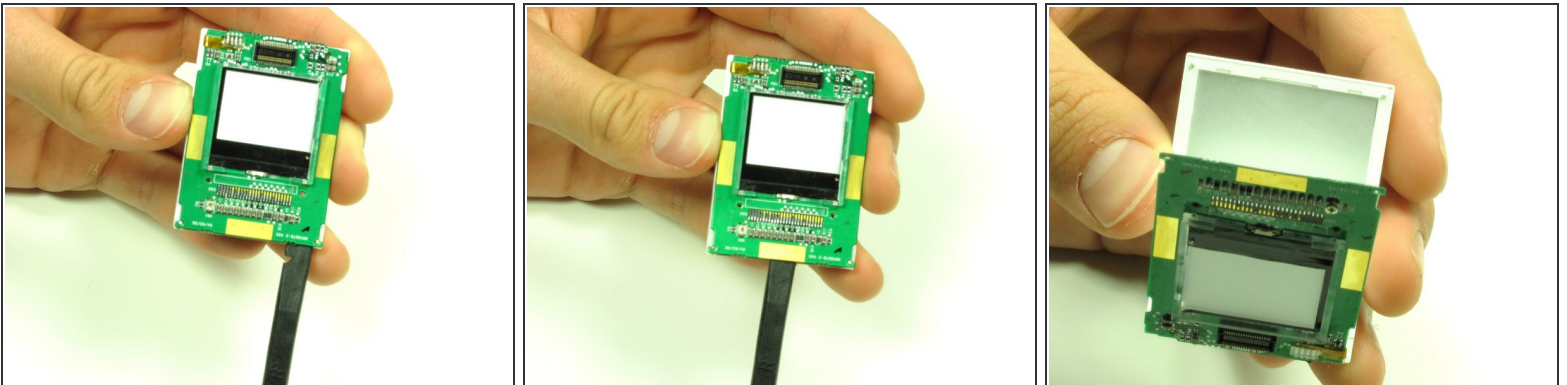
- Remove the tape from the bottom of the LCD screen.

## Step 7



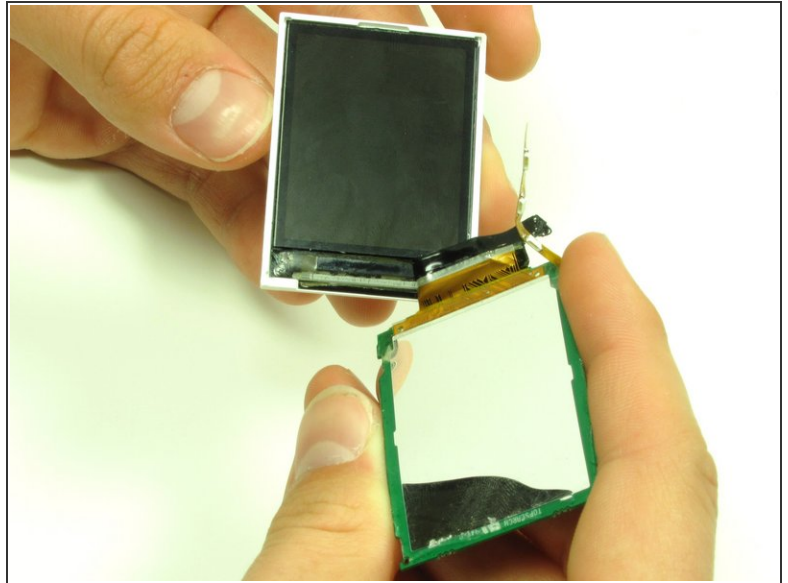
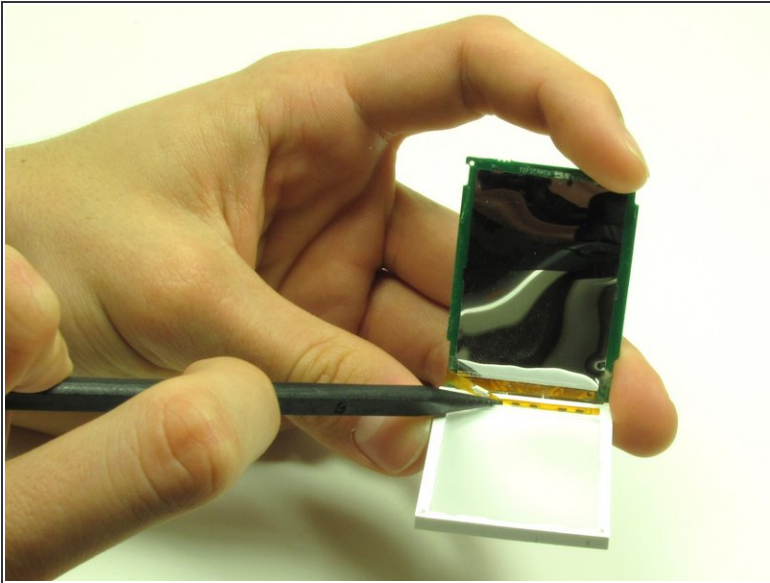
- Carefully lift the LCD screen and peel it from the gold ribbon. The sticky connection runs all the way around the LCD screen.

## Step 8



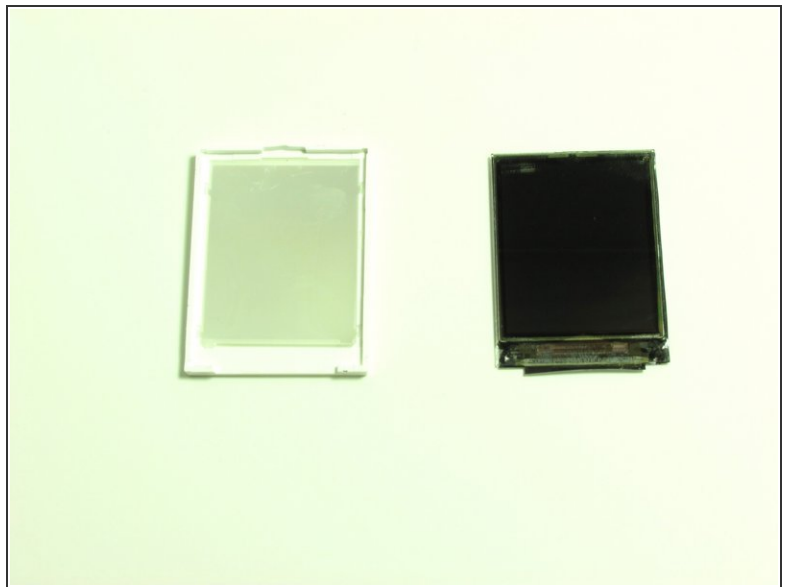
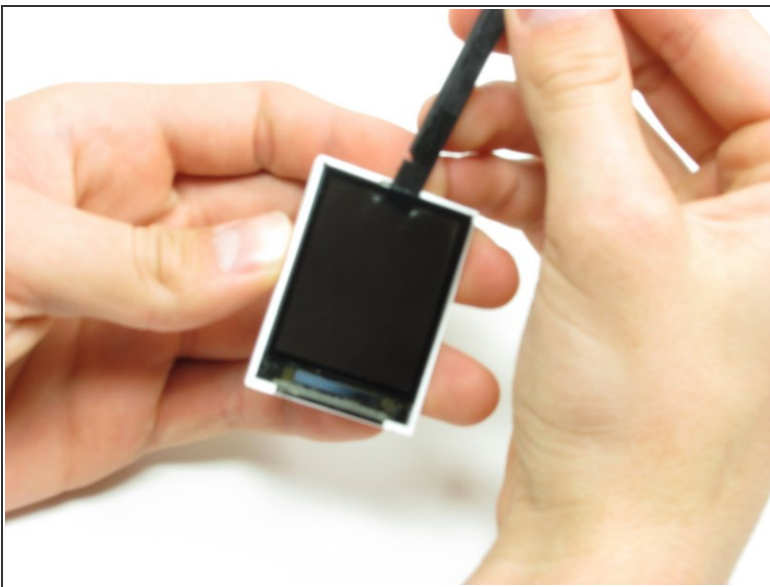
- Flip the screen over so that you can see the outer LCD screen and the circuit board.
  - Insert spudger in the bottom right corner.
  - Lift up and move the spudger across the bottom.
- i** The third photo is rotated 180 degrees.

## Step 9



- Use the pointy side of the spudger to peel off the interior tape.
- Flip the assembly over and peel the circuit board from the screen.

## Step 10



- Use the spudger to remove the LCD screen from its backing.

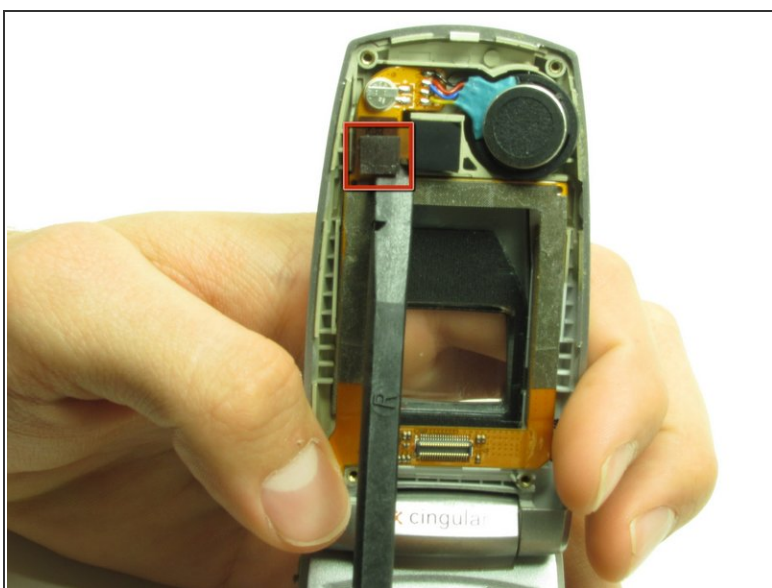


## Step 11 — Camera



- Carefully slide the spudger behind the main ribbon in order to separate it from the inside cover of the phone.

## Step 12



- Use a spudger to pop off the camera ribbon from the main ribbon. The camera component should separate entirely.



## Step 13 — Logic Board



- ⚠ Make sure you remove the battery by lifting the tab on the back of the phone before opening the case.
- Poke out rubber covers using a spudger or pointy object, such as a thumb tack.

## Step 14



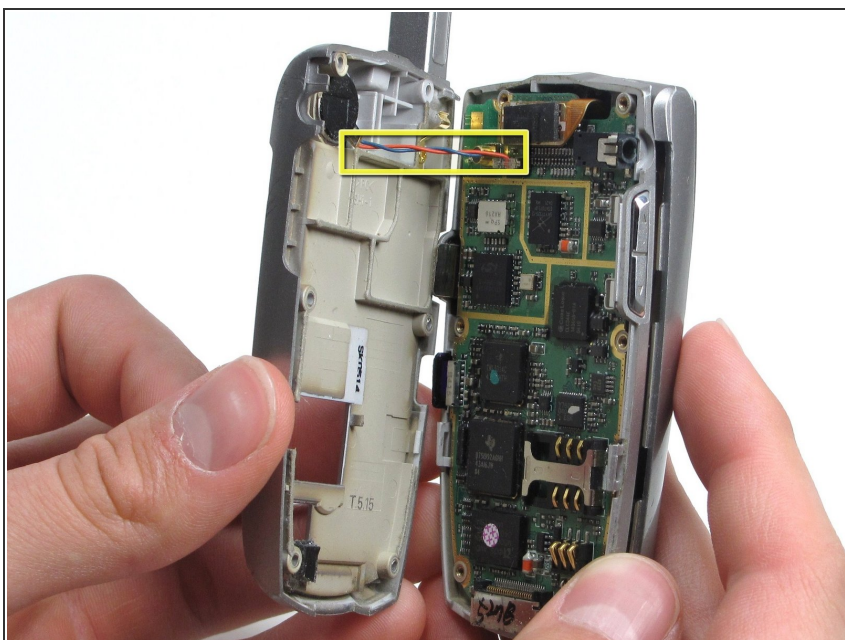
- Use a T6 torx screwdriver to unscrew the 6 screws that hold the back casing on.

## Step 15



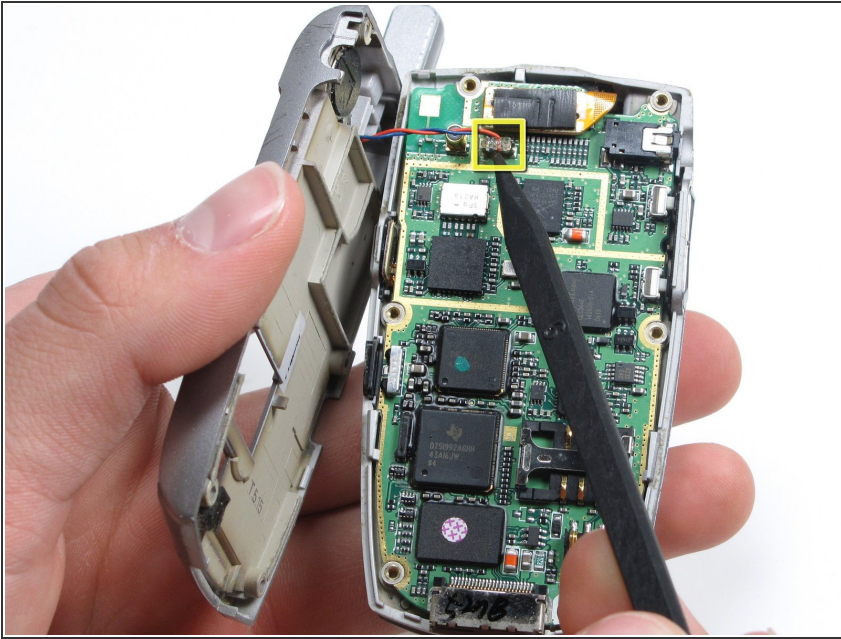
- Use iPod opening tool to separate back housing.
- ⓘ There are two tabs located on either side of the phone.

## Step 16



- Separate the back housing from the phone.
- ⚠ Be careful not to rip out the wire (highlighted in yellow) when separating the back housing.

## Step 17



- Use a spudger to disconnect antenna wire.

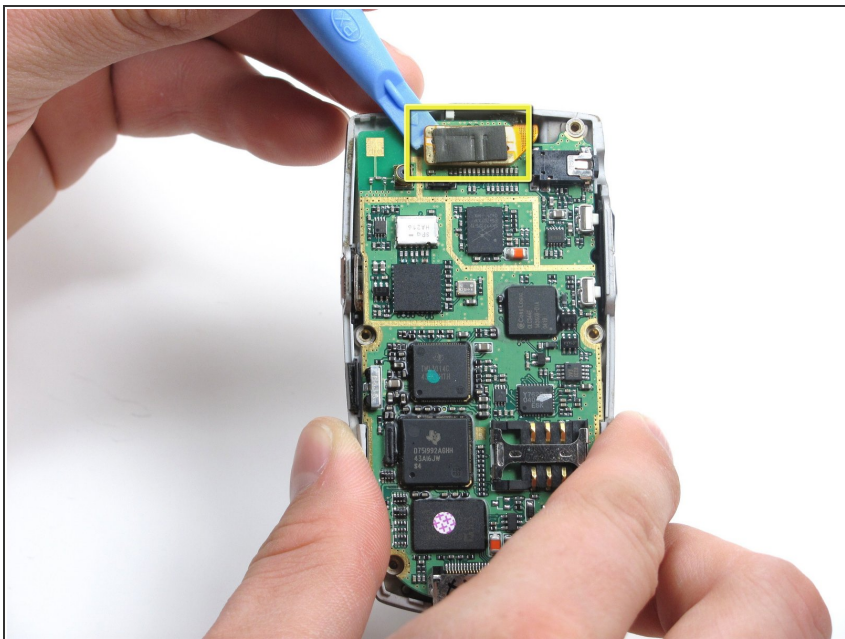
## Step 18



- Use the iPod opening tool to pop out the logic board.



## Step 19



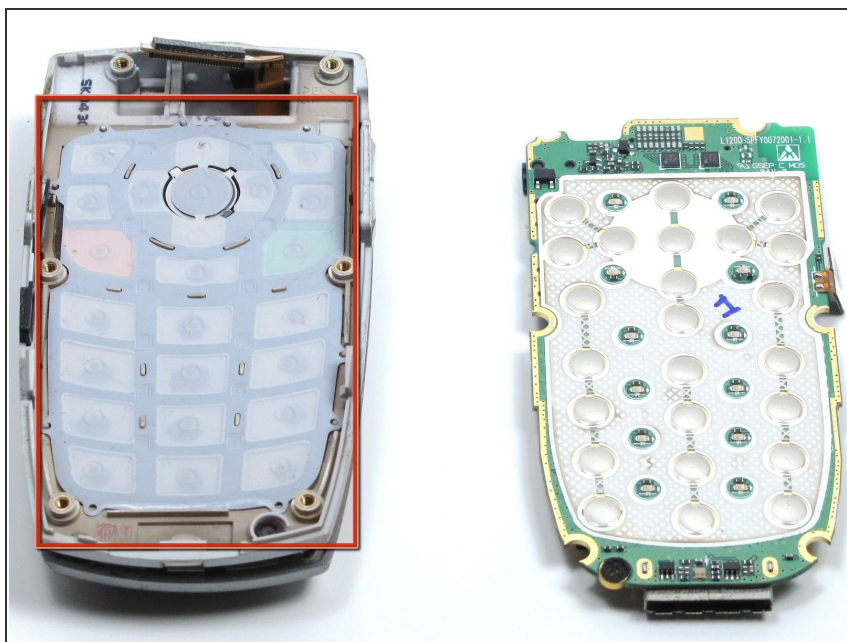
- Use the iPod opening tool to disconnect the main ribbon.

## Step 20



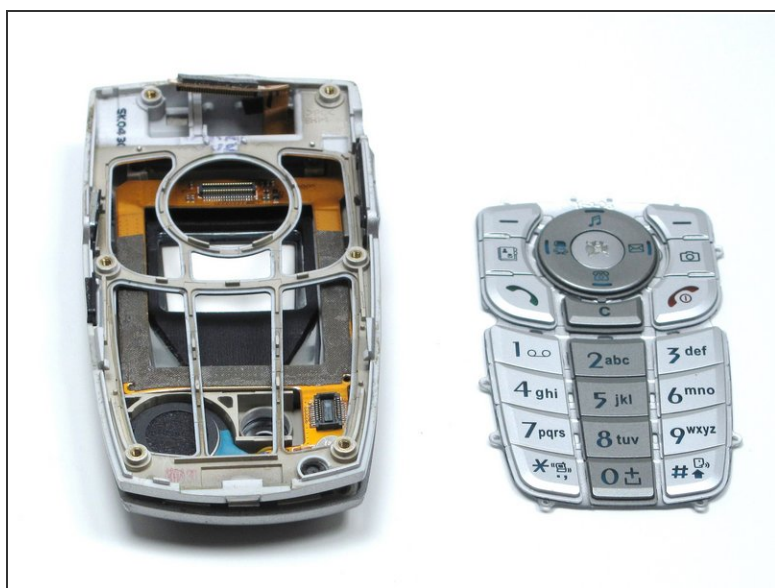
- Once the ribbon is detached, remove the logic board and replace if necessary.

## Step 21 — Keypad



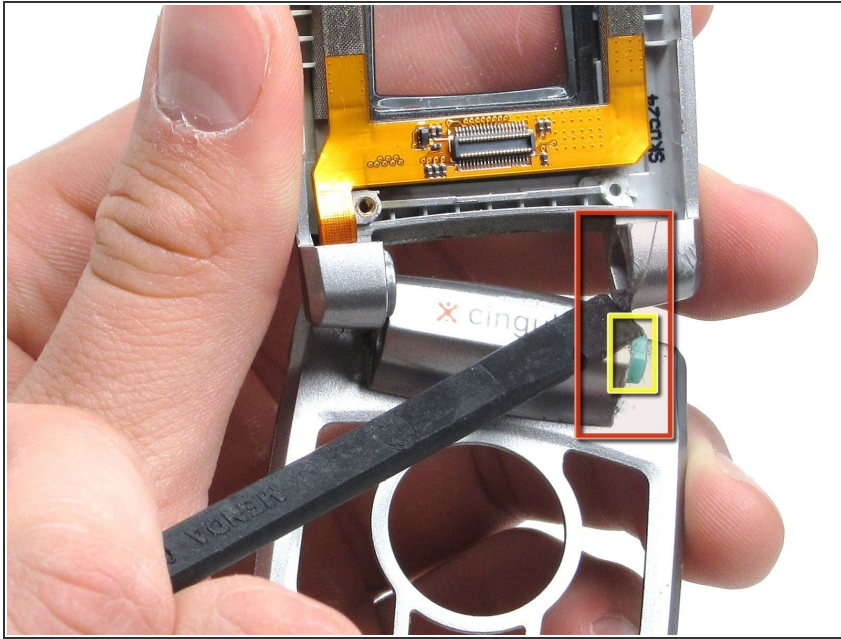
- The back of the keypad is shown here, next to the logic board (the logic board is turned over to expose the buttons).

## Step 22



- Using a spudger, lift the keypad off of the tabs.

## Step 23 — External Housing



- Wedge a spudger or another harder prying tool in the connection between the top cover and the bottom cover on the right side.
- Use a large amount of force to push the top cover off the bottom cover's blue extrusion.
- ⚠ Too much force may break the plastic of the top cover
- When separating the top cover from the bottom cover, be careful not to tear the ribbon as you pull it out from the hinge.



## Step 24



- Slide the ribbon out of the slot in the joint on the left side.
- Pull the ribbon out of the top cover with your hand.
- Once the ribbon is removed, you can replace the covers.

To reassemble your device, follow these instructions in reverse order.