



LG L1200 Internal Speaker Replacement

Written By: Joshua Herrmann



INTRODUCTION

This guide will help you replace the internal speaker found in the earpiece of the phone.

TOOLS:

- [Desoldering Braid](#) (1)
 - [iFixit Opening Tools](#) (1)
 - [Soldering Workstation](#) (1)
 - [Spudger](#) (1)
 - [T6 Torx Screwdriver](#) (1)
-

Step 1 — Inner LCD Screen



- ⚠ Make sure you remove the battery by lifting the tab on the back of the phone before opening the case.
- Flip open the phone and locate the four screw covers.

Step 2



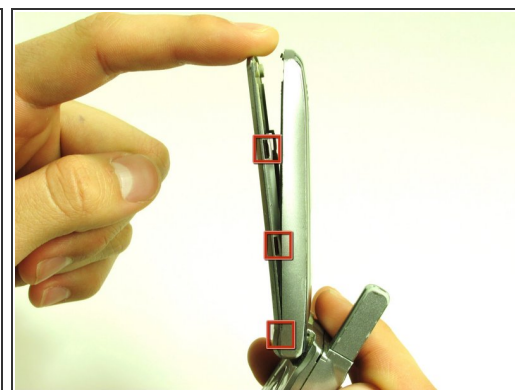
- Remove all four screw covers by using an iPod opening tool. They should come off relatively easy.

Step 3



- Using a T6 Torx screwdriver, remove all four screws.

Step 4



- Once the screws are removed, use an iPod opening tool to separate the front cover from the inner screen cover.
- Run the iPod opening tool down both sides, disconnecting the tabs that hold the covers together.

Step 5



- Pull the inner screen cover towards you and up in order to separate it from the front cover.

Step 6



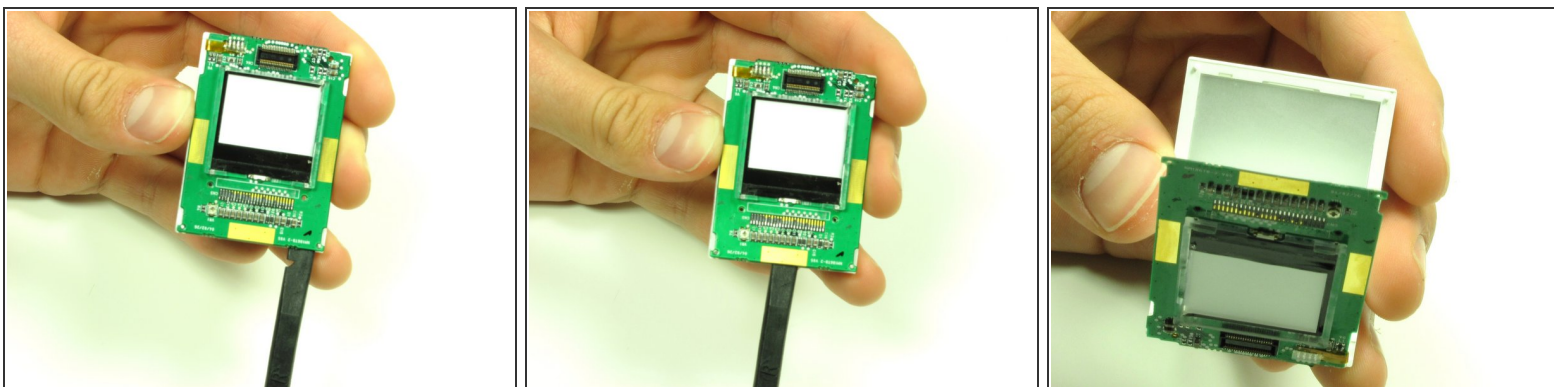
- Remove the tape from the bottom of the LCD screen.


Step 7



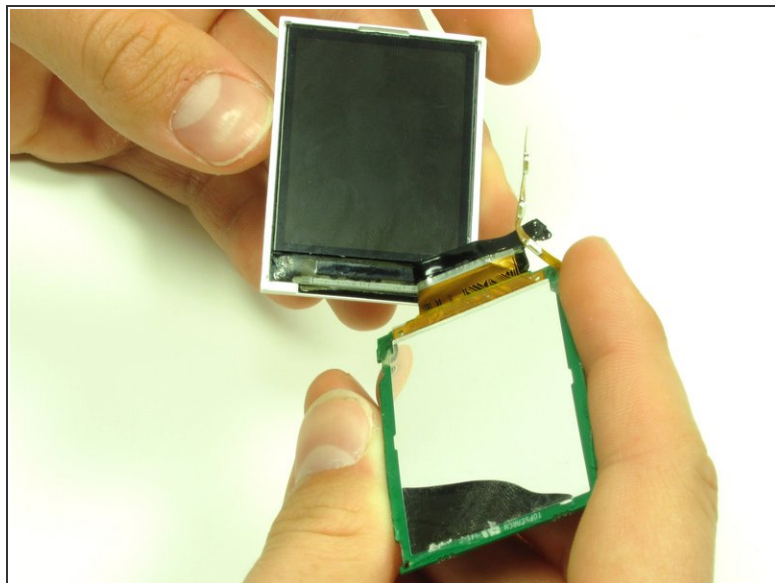
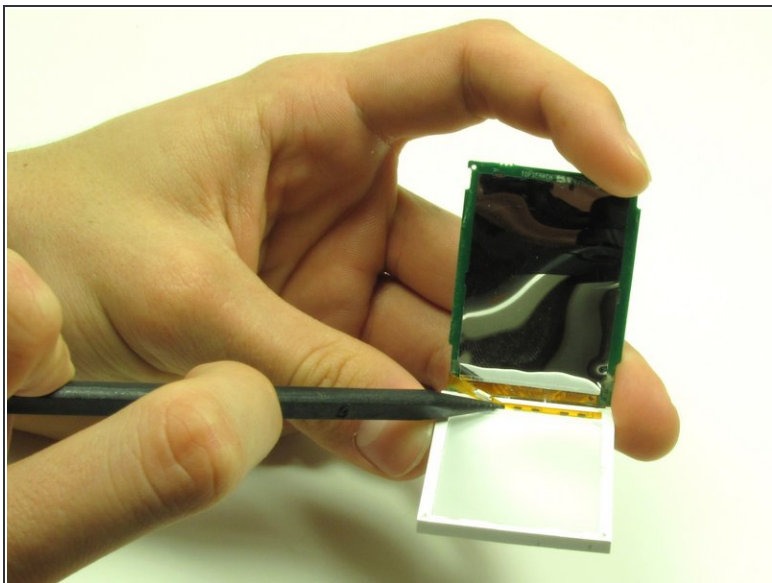
- Carefully lift the LCD screen and peel it from the gold ribbon. The sticky connection runs all the way around the LCD screen.

Step 8



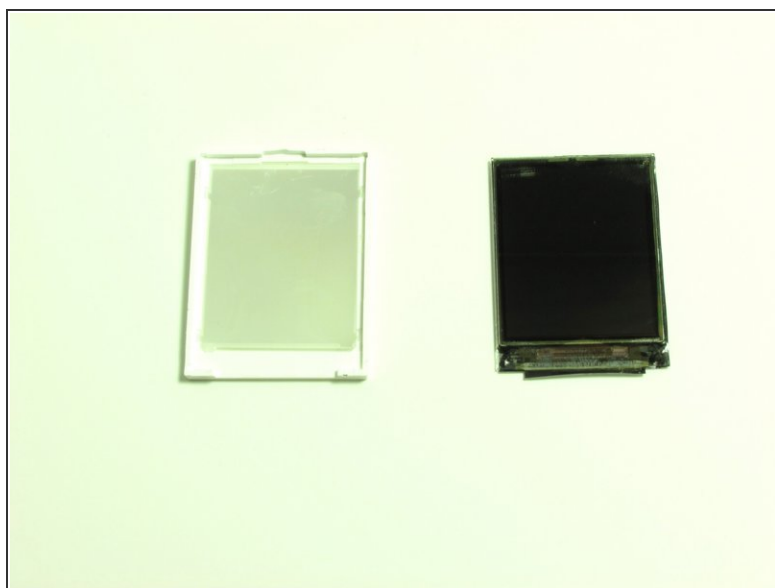
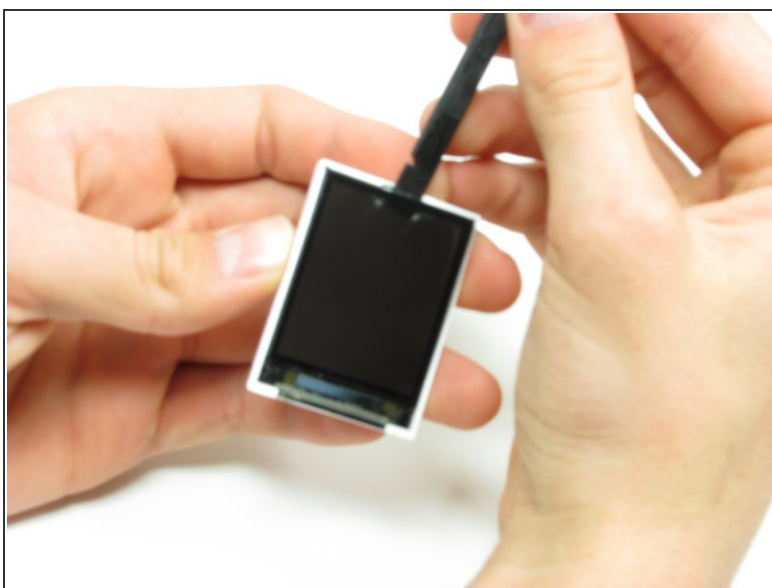
- Flip the screen over so that you can see the outer LCD screen and the circuit board.
 - Insert spudger in the bottom right corner.
 - Lift up and move the spudger across the bottom.
-  The third photo is rotated 180 degrees.

Step 9



- Use the pointy side of the spudger to peel off the interior tape.
- Flip the assembly over and peel the circuit board from the screen.

Step 10



- Use the spudger to remove the LCD screen from its backing.

Step 11 — Internal Speaker



- Desolder the wires connecting the speaker.
- Solder on wires from new speaker.

To reassemble your device, follow these instructions in reverse order.