



LG L1200 Keypad Replacement

Written By: Joshua Herrmann



INTRODUCTION

This guide will help you replace the keypad of the phone.




TOOLS:

- [iFixit Opening Tools](#) (1)
 - [Spudger](#) (1)
 - [T6 Torx Screwdriver](#) (1)
-

Step 1 — Logic Board



 Make sure you remove the battery by lifting the tab on the back of the phone before opening the case.

- Poke out rubber covers using a spudger or pointy object, such as a thumb tack.

Step 2



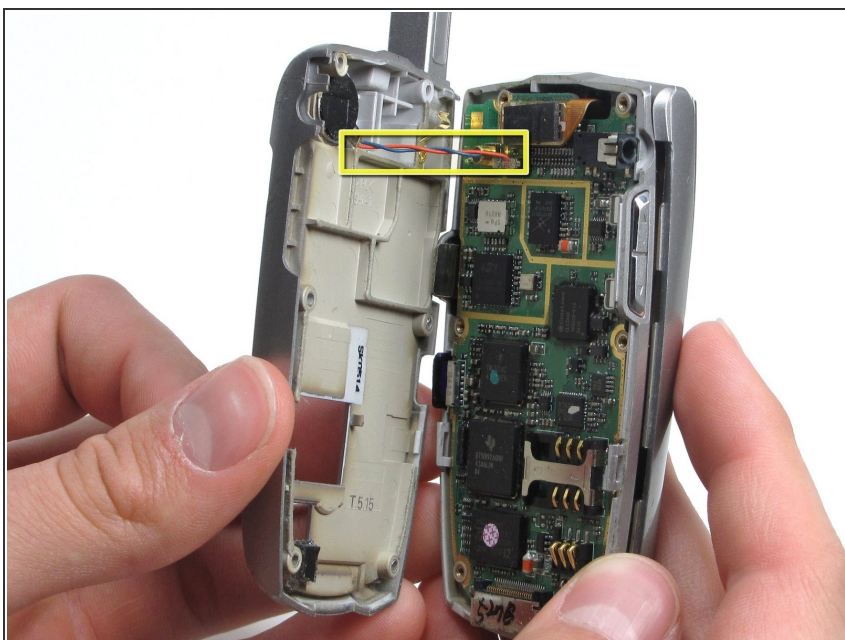
- Use a T6 torx screwdriver to unscrew the 6 screws that hold the back casing on.

Step 3



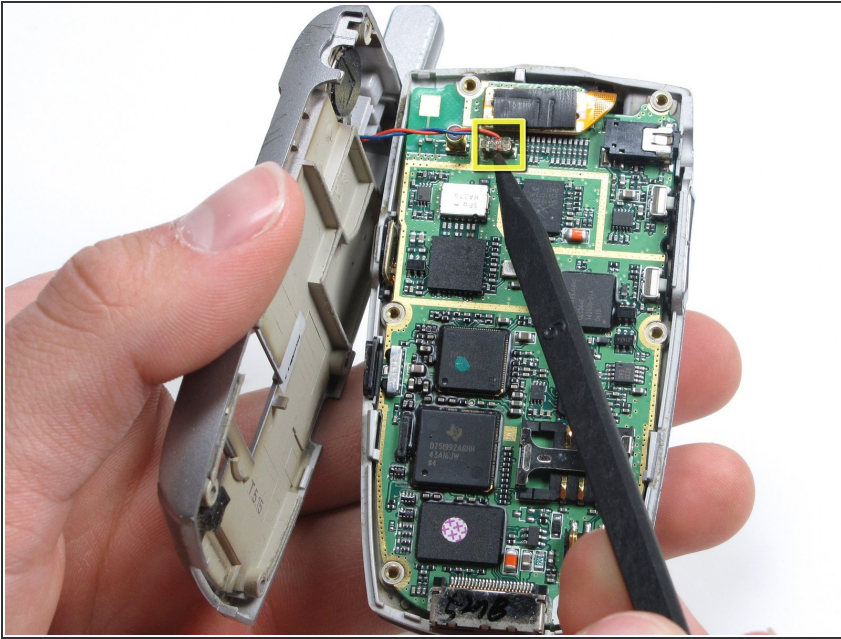
- Use iPod opening tool to separate back housing.
- ⓘ There are two tabs located on either side of the phone.

Step 4



- Separate the back housing from the phone.
- ⚠ Be careful not to rip out the wire (highlighted in yellow) when separating the back housing.

Step 5



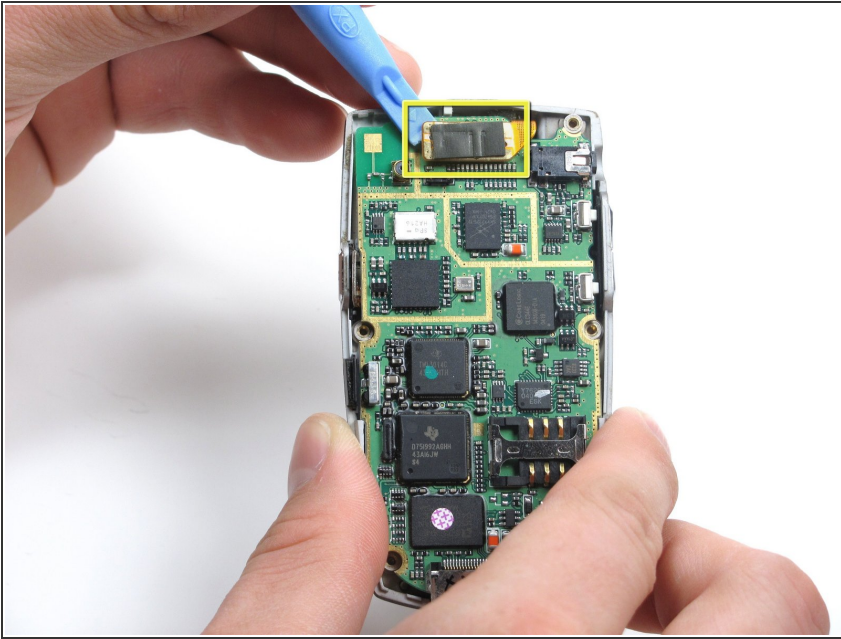
- Use a spudger to disconnect antenna wire.

Step 6



- Use the iPod opening tool to pop out the logic board.

Step 7



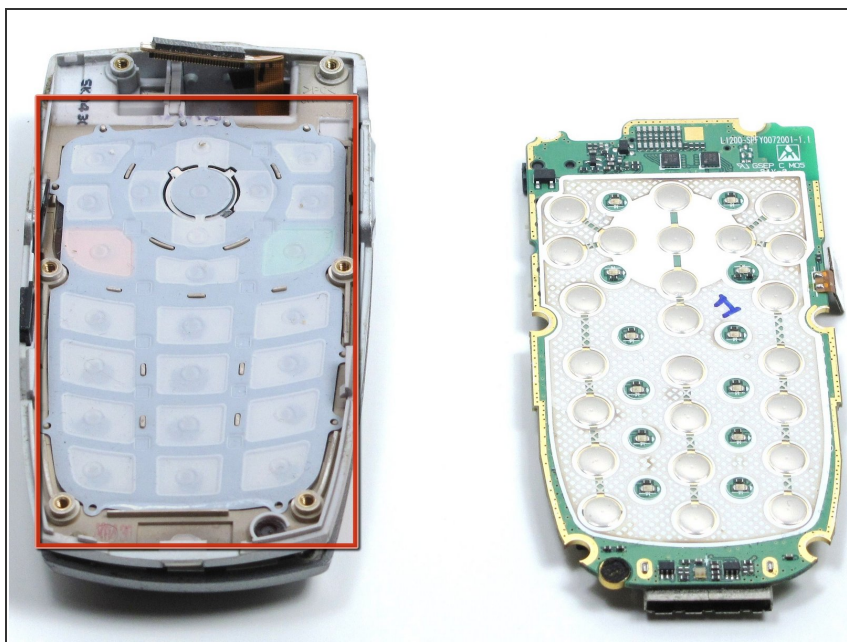
- Use the iPod opening tool to disconnect the main ribbon.

Step 8



- Once the ribbon is detached, remove the logic board and replace if necessary.

Step 9 — Keypad



- The back of the keypad is shown here, next to the logic board (the logic board is turned over to expose the buttons).

Step 10



- Using a spudger, lift the keypad off of the tabs.

To reassemble your device, follow these instructions in reverse order.