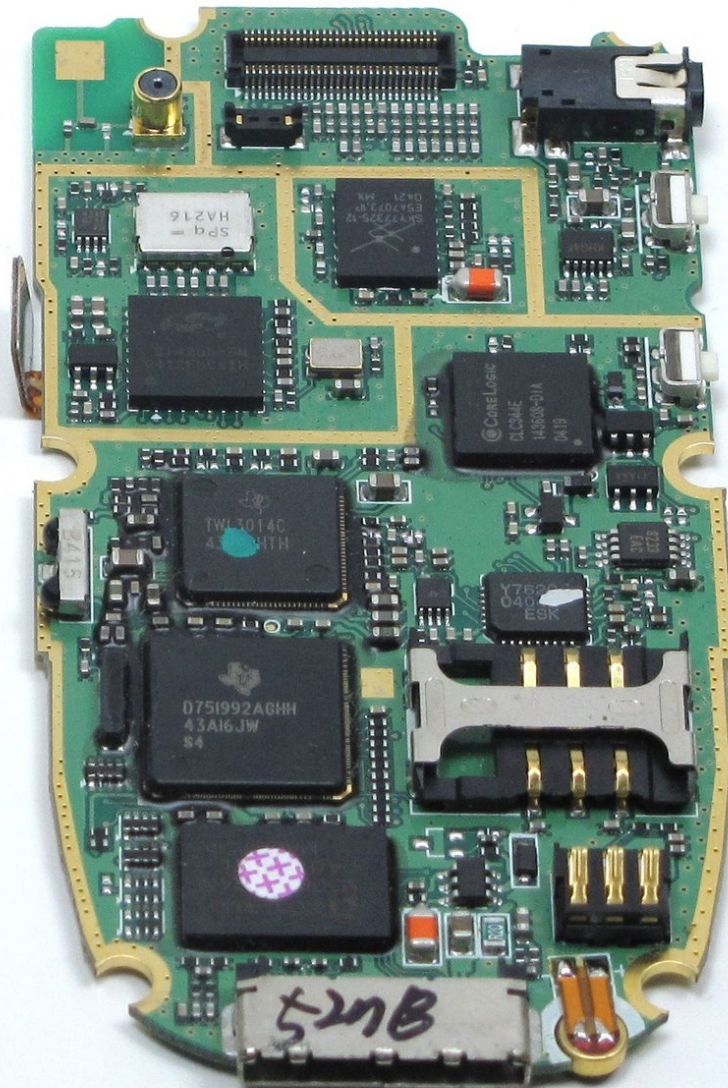




# LG L1200 Logic Board Replacement

Written By: Joshua Herrmann



---

# INTRODUCTION

This guide will help you replace the logic board.



## TOOLS:

- [iFixit Opening Tools](#) (1)
  - [Spudger](#) (1)
  - [T6 Torx Screwdriver](#) (1)
-

## Step 1 — Logic Board



- ⚠ Make sure you remove the battery by lifting the tab on the back of the phone before opening the case.
- Poke out rubber covers using a spudger or pointy object, such as a thumb tack.

## Step 2



- Use a T6 torx screwdriver to unscrew the 6 screws that hold the back casing on.



### Step 3



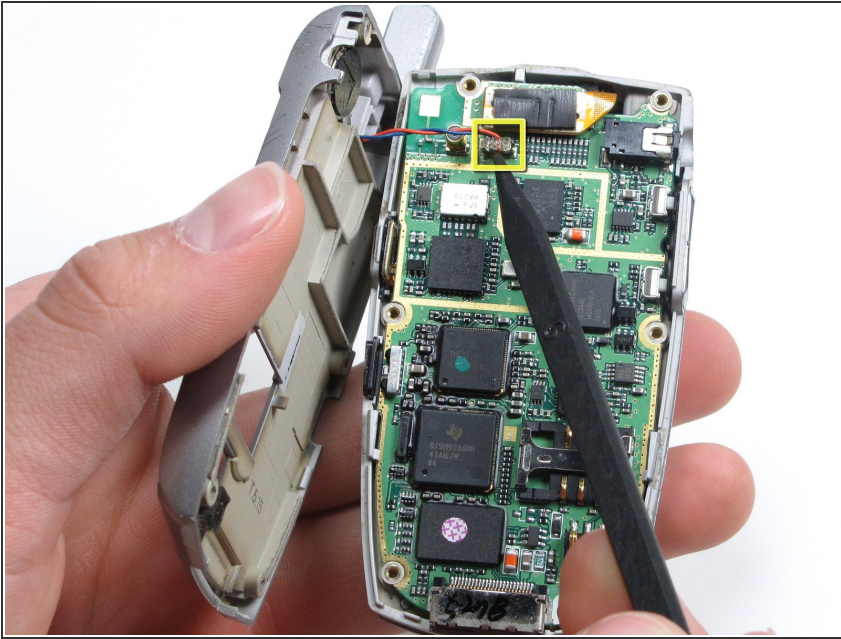
- Use iPod opening tool to separate back housing.
- ⓘ There are two tabs located on either side of the phone.

### Step 4



- Separate the back housing from the phone.
- ⚠ Be careful not to rip out the wire (highlighted in yellow) when separating the back housing.

## Step 5



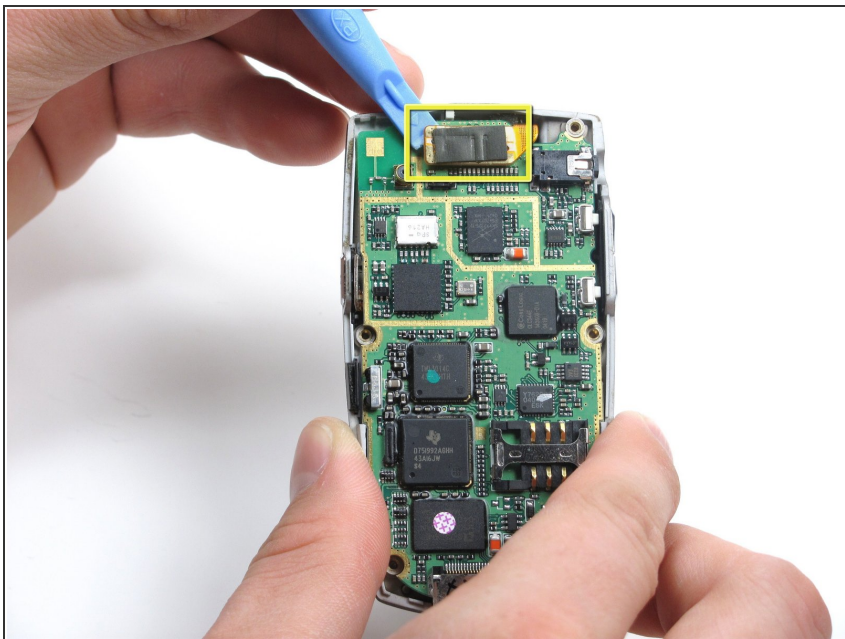
- Use a spudger to disconnect antenna wire.

## Step 6



- Use the iPod opening tool to pop out the logic board.

## Step 7



- Use the iPod opening tool to disconnect the main ribbon.

## Step 8



- Once the ribbon is detached, remove the logic board and replace if necessary.

To reassemble your device, follow these instructions in reverse order.