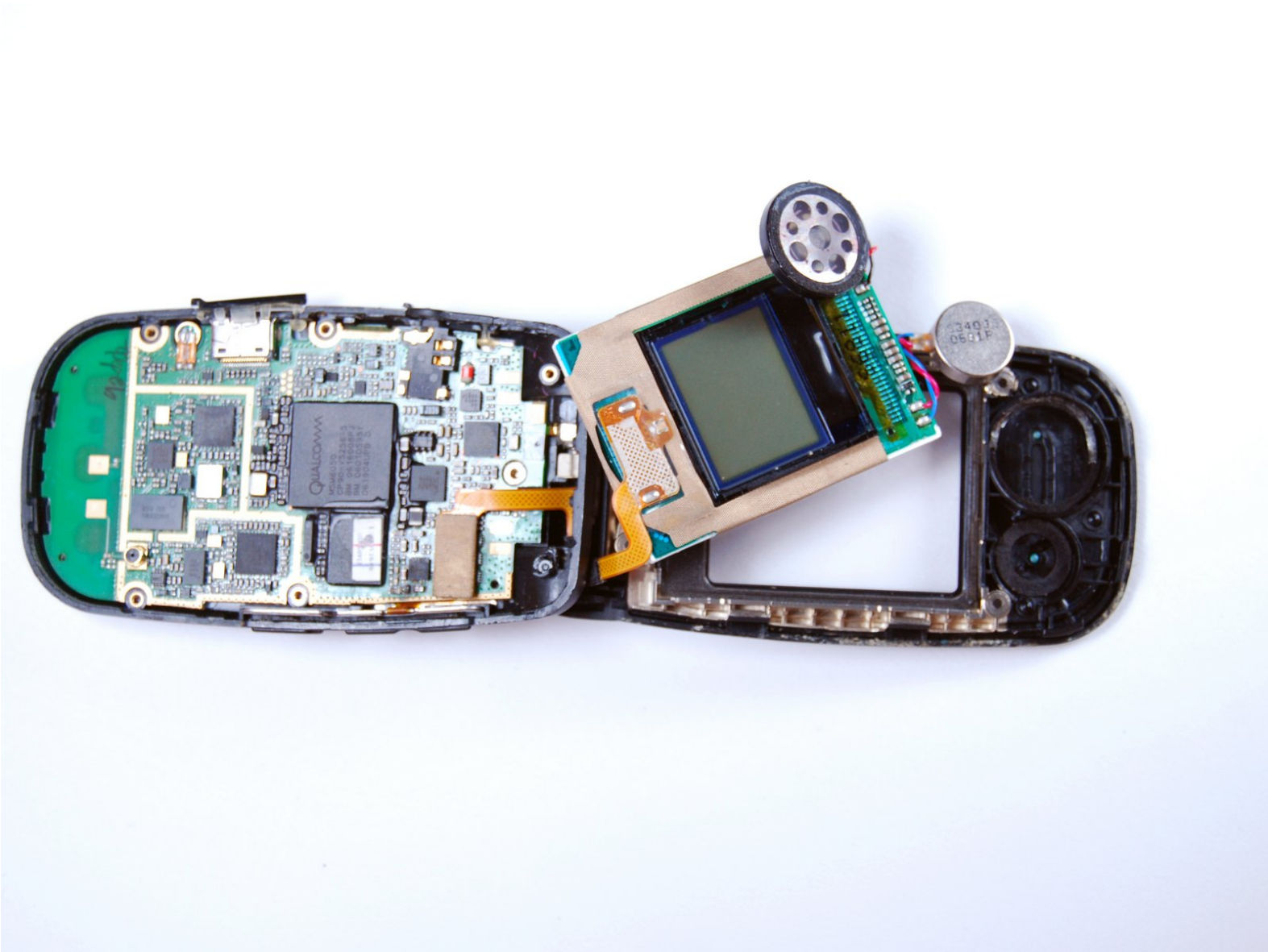




# LG LX150 Speakers Replacement

Written By: Harry Black



---

## INTRODUCTION

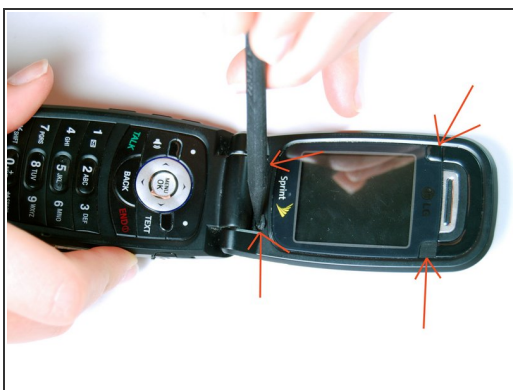
Use this guide to remove the speakers from the device.



### TOOLS:

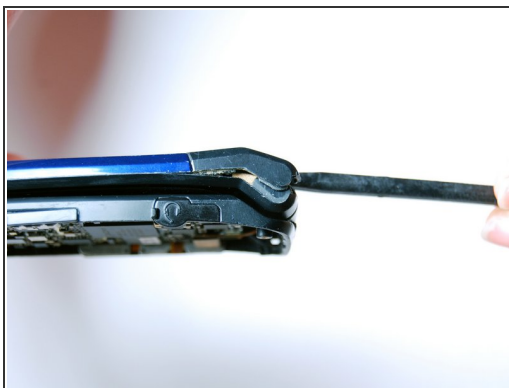
- [Spudger](#) (1)
-

## Step 1 — Front Cover



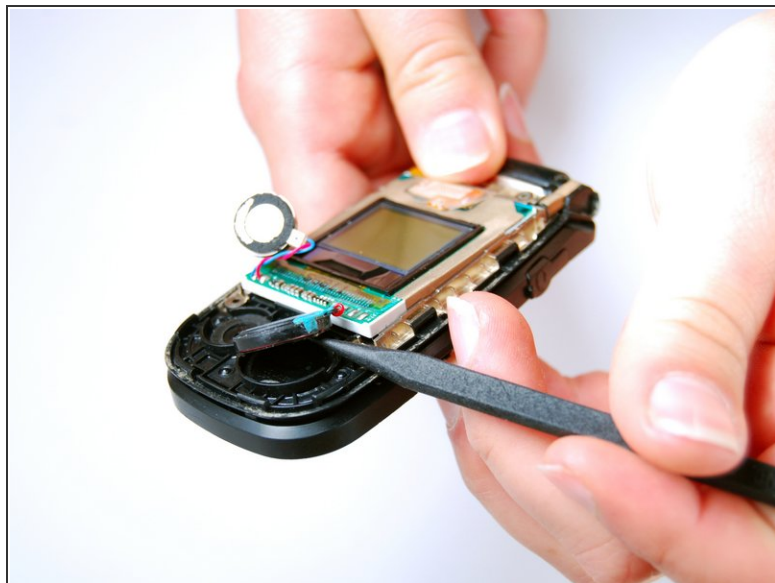
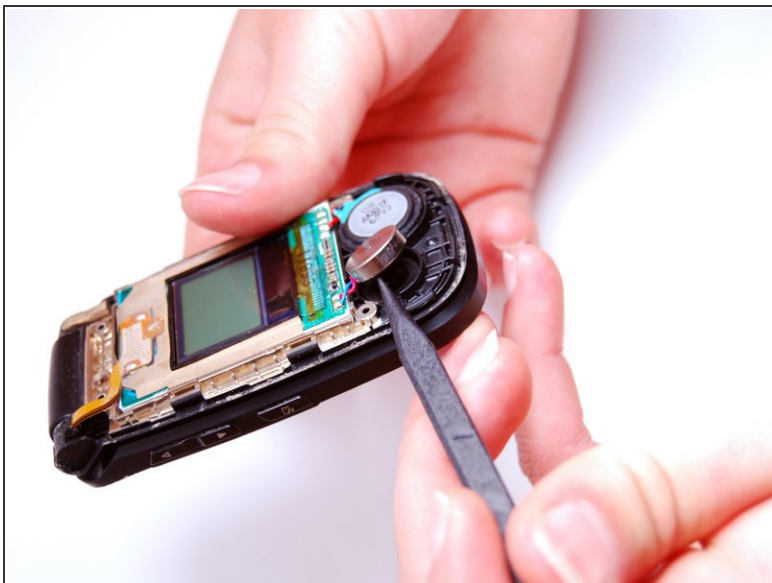
- Use the spudger to pry out the indicated rubber squares.
- Use the #0 Phillips screwdriver to take out the revealed screws.

## Step 2



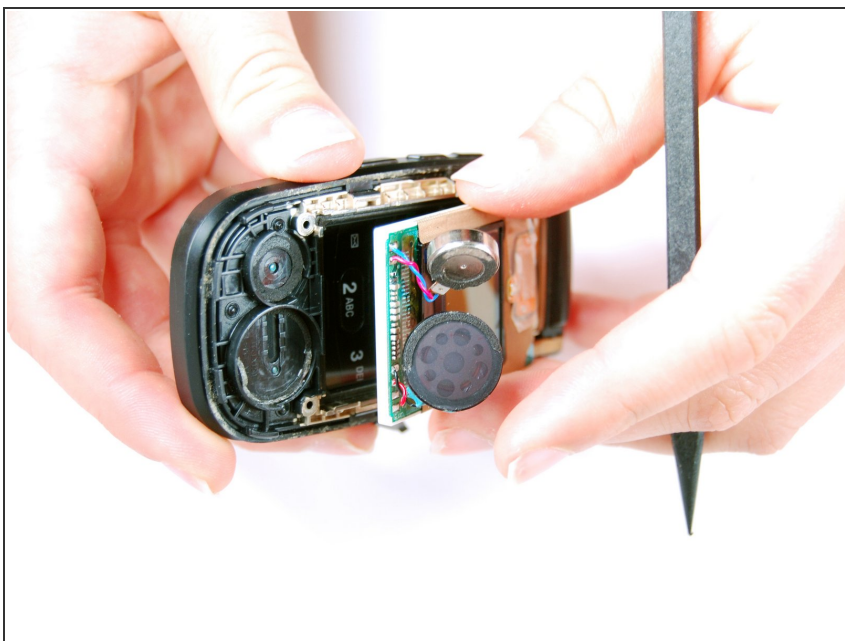
- Carefully lodge the spudger between the face plate and the hinge mechanism.
- Gently pry the face plate until it releases from place holders.

## Step 3 — Speakers



- Using a spudger, detach the speakers from their place holders.

## Step 4



- Using the spudger, pry between the speaker circuit board and base to detach with ease.

To reassemble your device, follow these instructions in reverse order.