



LG Lucid 4G SIM Card Replacement

This guide will teach you how to remove and replace the SIM card of your LG Lucid 4G phone.

Written By: Margaret Huck



INTRODUCTION

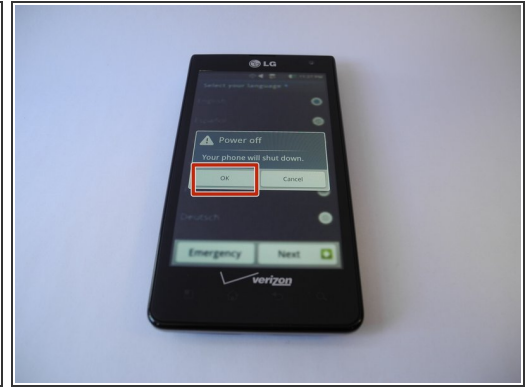
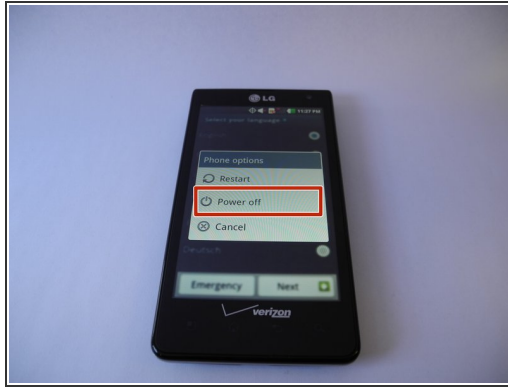
In order to remove the SIM card, you need to remove the battery of this phone first. This guide will help you do so safely and effectively.



TOOLS:

- [iFixit Opening Tools](#) (1)
-

Step 1 — Battery



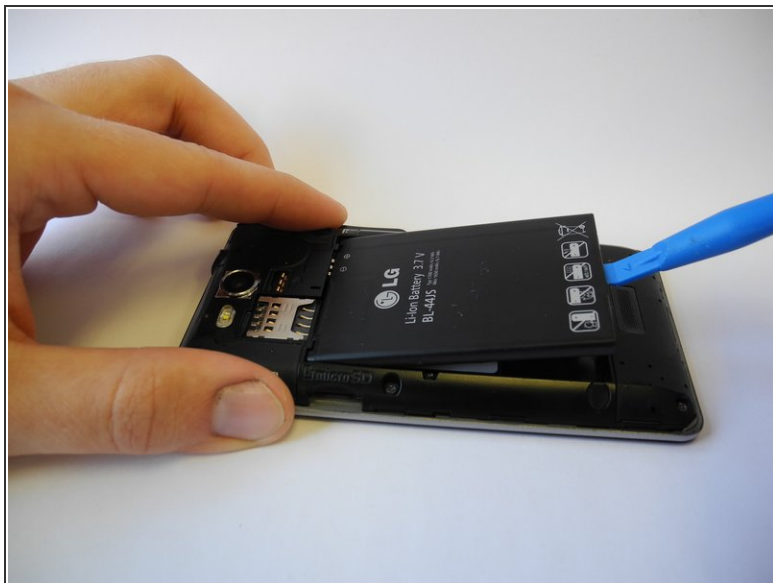
- Turn off the phone by pressing the power button, then press "Power Off", then press "OK" when notified that your phone will shut down.

Step 2



- Flip the phone so that its back plate is facing upward.
- Use your fingernail or prying tool to lift the back plate of the phone open by using the notch at the bottom.

Step 3



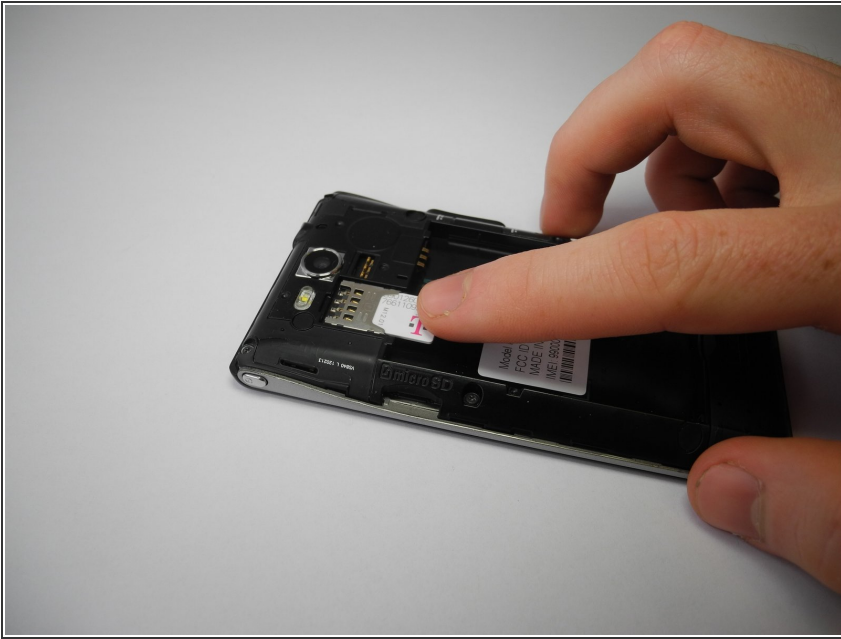
- Using the notch located near the bottom center, remove the battery with a prying tool or your fingernail.

Step 4 — SIM Card



- After you have cleaned the battery area, locate the SIM card slot.

Step 5



- Using your finger, carefully remove the SIM card from its slot by moving it toward the battery area.

To reassemble your device, follow these instructions in reverse order.