



LG Neon GT 365 Case Replacement

Use this guide to replace the case of the phone.

Written By: kristie



INTRODUCTION

This guide explains how to replace the Case of a LG Neon GT 365 phone



TOOLS:

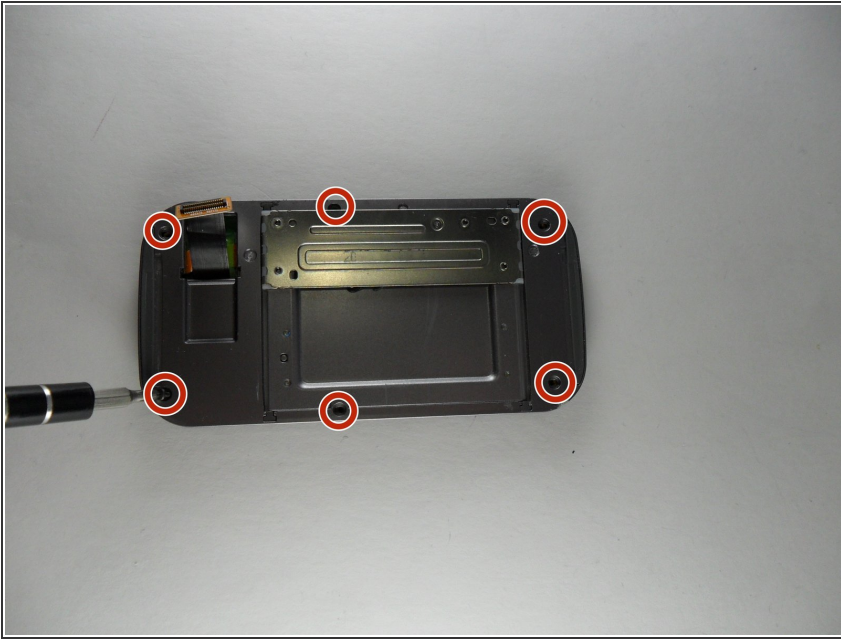
- [iFixit Opening Tools](#) (1)
 - [64 Bit Driver Kit](#) (1)
-

Step 1 — Case



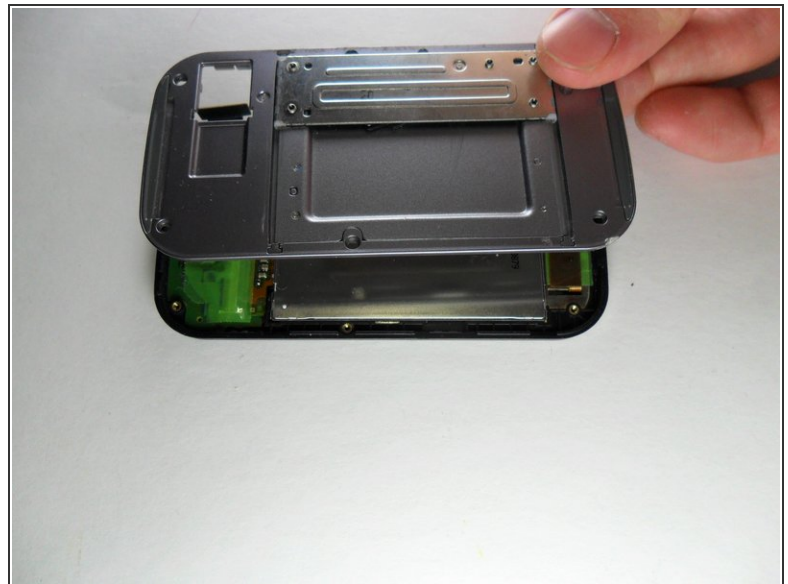
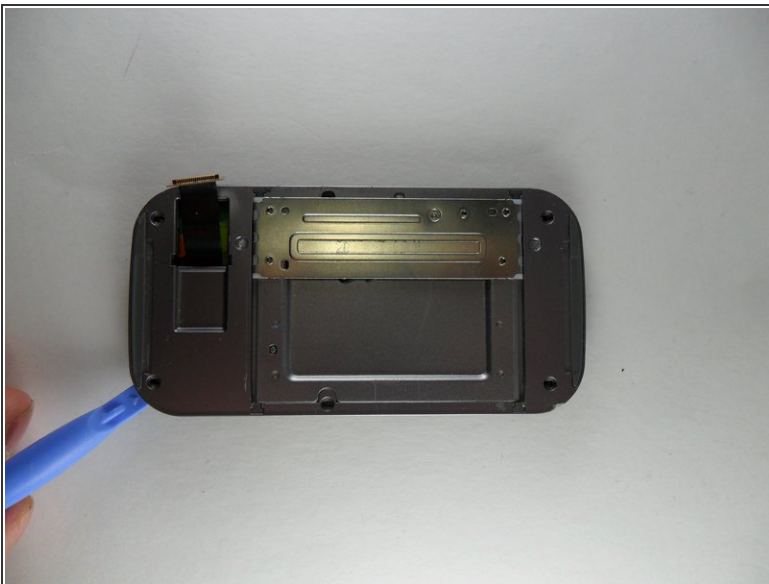
- Remove the back cover of the phone by pushing the rectangular button located on the back top-side of the phone.

Step 2



- Use the appropriate screw driver head and remove the six black screws as shown in the picture. A screw may be covered by the slide spring. Move the slide spring to the other side to access that screw.

Step 3



- Use the plastic opening tool to go around the seem and slowly pull off slide spring assembly.

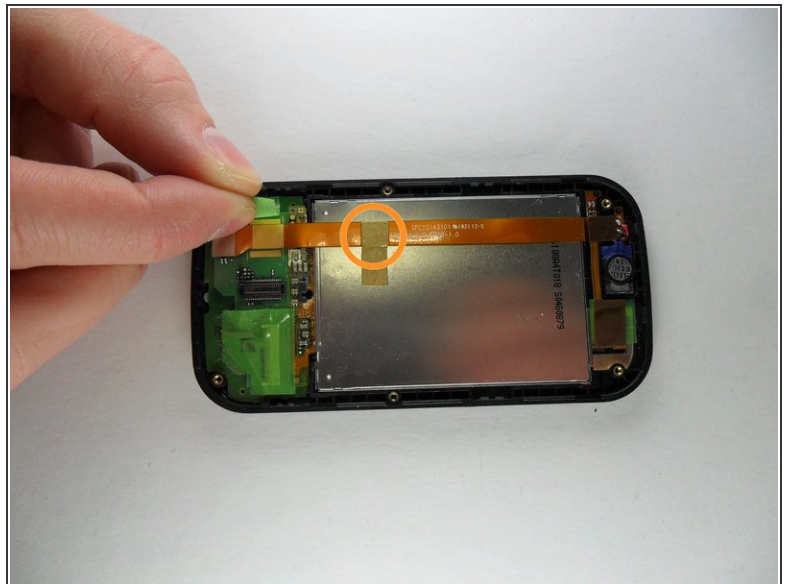
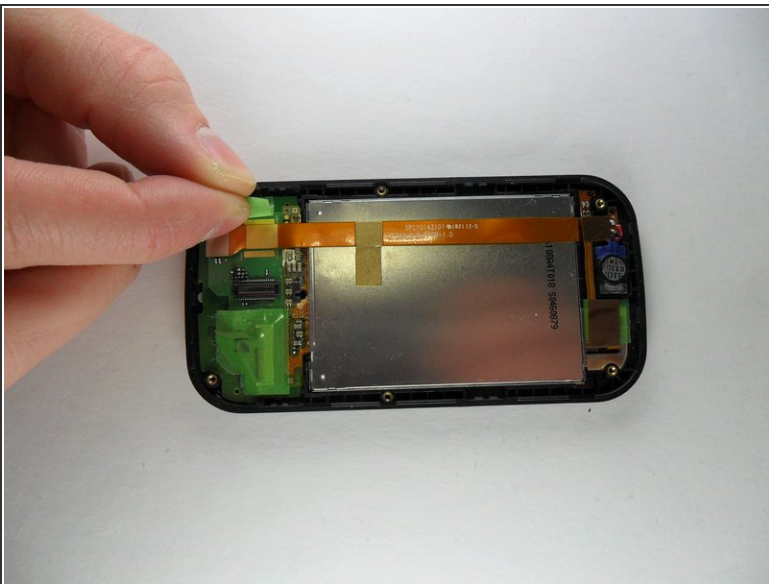
⚠ Make sure the ribbon connector does not get caught on other parts of the phone.

Step 4



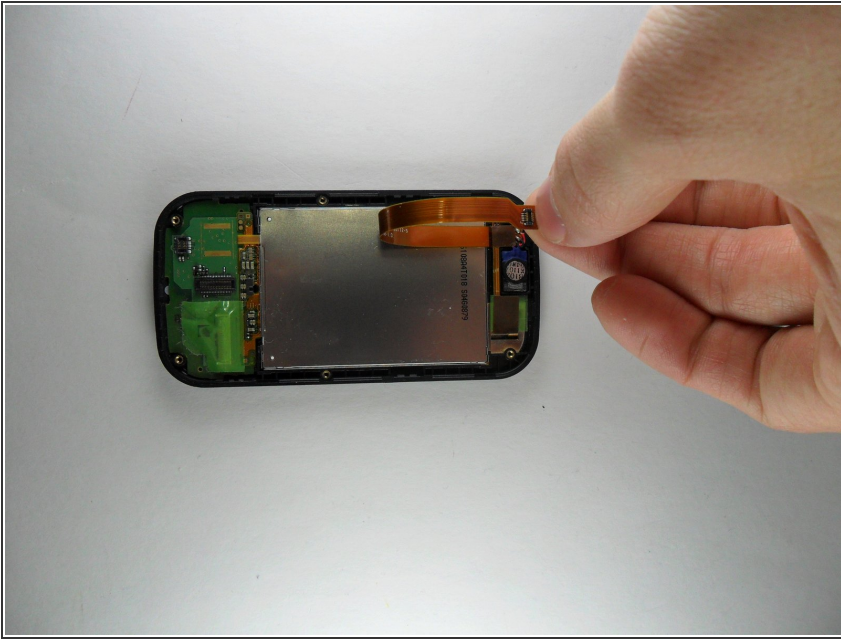
- Remove the connector ribbon located near the bottom of the phone by pulling gently on the ribbon.

Step 5



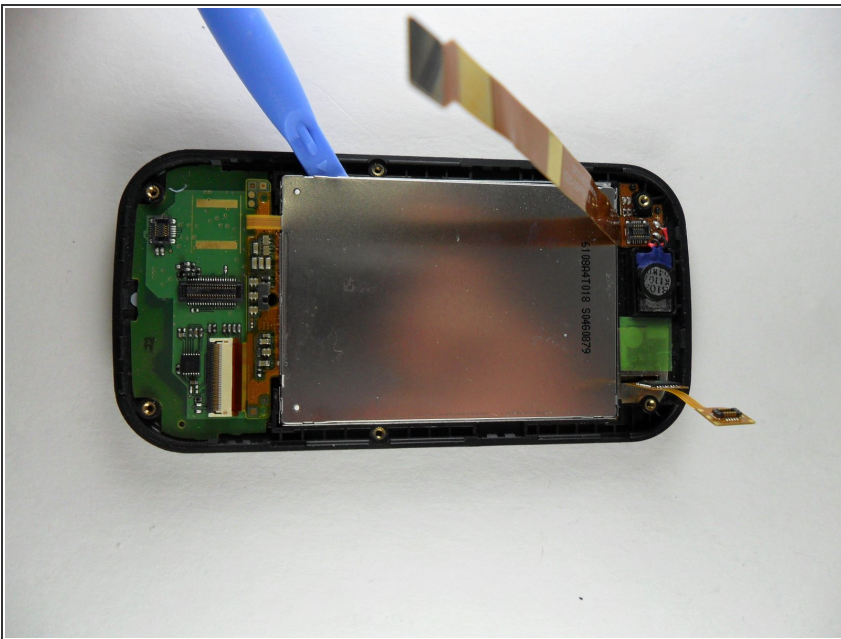
- Carefully, peel off the two green pieces of tape then the gold tape.

Step 6



- Disconnect the copper colored ribbon. It is fine to leave the copper ribbon attached to the top of the phone.

Step 7



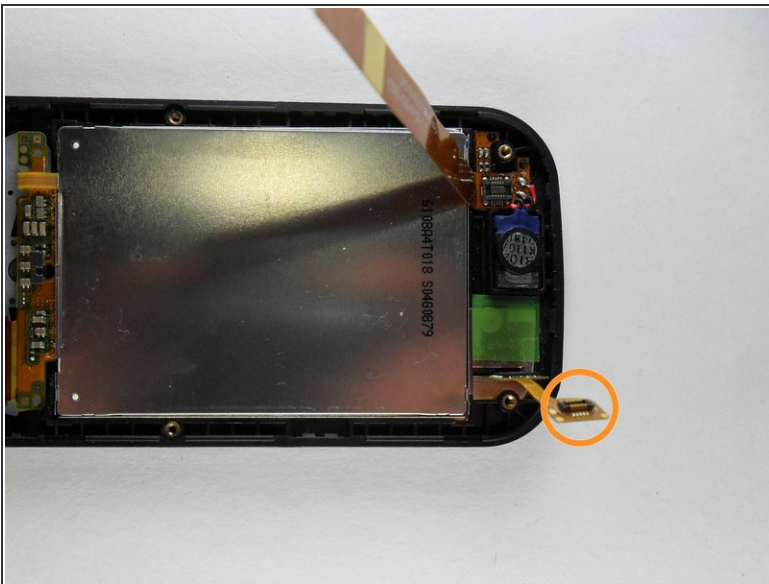
- Use the plastic opening tool and go around the silver screen and begin to lift it up.
- Once the silver screen has been lifted up slightly, slide the bottom half of the green circuit board located below the screen off of the phone. Then continue popping the screen out.

Step 8



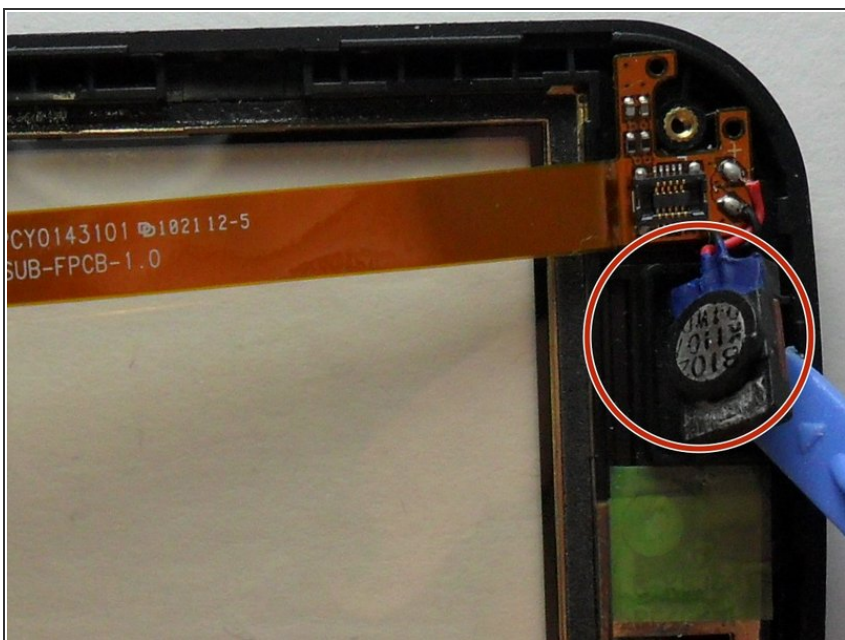
- Once the silver screen has been lifted up slightly, slide the bottom half of the green circuit board located below the screen off of the phone.

Step 9



- Disconnect left side of this ribbon.
- By disconnecting the left side of that ribbon, the phone's screen can be removed from the outer shell.

Step 10



- Use the plastic opening tool to remove that speaker out of the groove.
- Use the plastic opening tool to remove the copper colored plate that the speaker and ribbon is attached to out of the phone.

Step 11



- Peel the rubber front keypad out of the case.

Step 12



- At this point, all of removable phone components has been taken out. With the new case, follow the steps in reverse to reassemble.

To reassemble your device, follow these instructions in reverse order.