



# LG Notebook LGC40 A410 Battery Replacement

Shows how to remove and replace the notebook battery

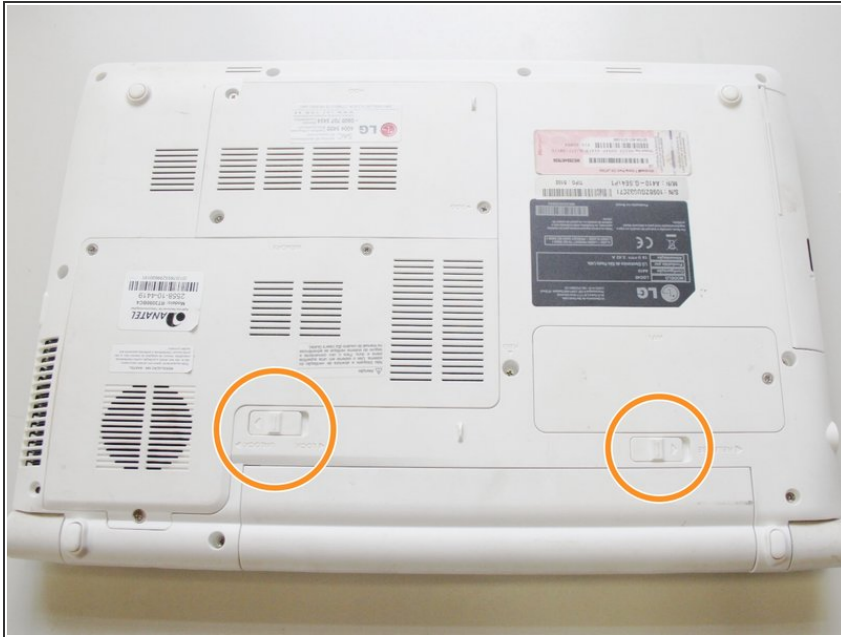
Written By: Claudio Felix



# INTRODUCTION

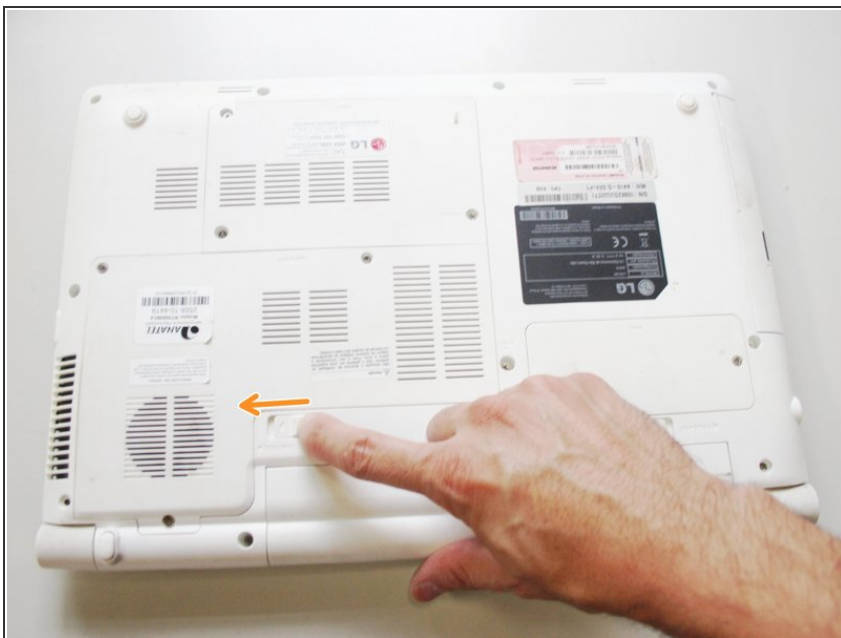
Shows how to remove and replace the notebook battery

## Step 1 — Locate the keys to unlock and release the battery



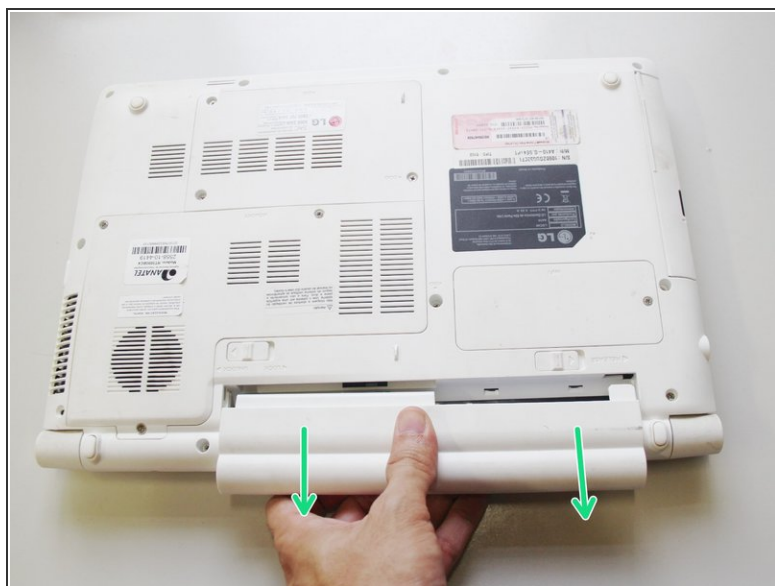
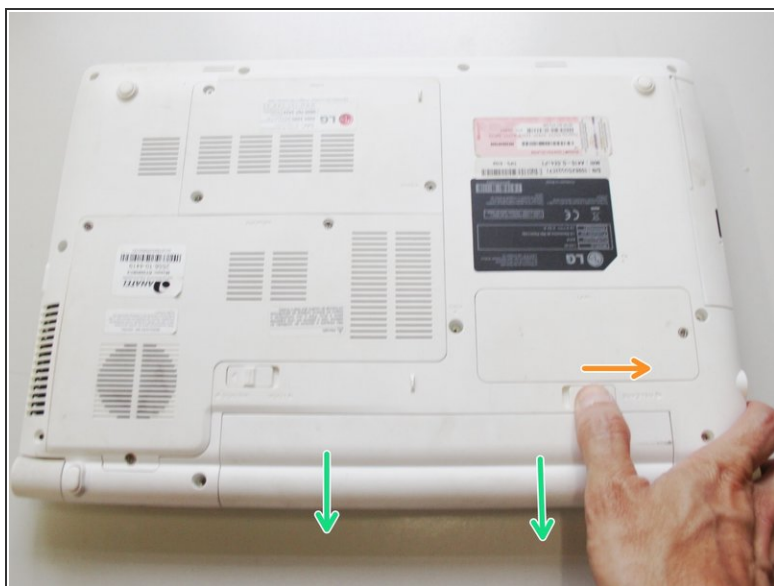
- Put the notebook upside down, preferably on top of a soft surface so any movement doesn't scratch the top cover.
- Locate the keys to unlock and release the battery

## Step 2 — Unlock the battery



- Slide the unlock key in the indicated direction to unlock the battery

### Step 3 — Release and remove the battery



- Slide and hold the release key in the indicated direction
- Pull out the battery

To reassemble your device, follow these instructions in reverse order.