



LG Optimus 3D Screen Replacement

This guide will show you how to replace the screen on your phone. This includes either a faulty LCD or a broken front panel.

Written By: Dale Pearson



INTRODUCTION

The LCD portion of the screen is what actually creates the image on the phone. The digitizer is contained in the glass panel on the front of the phone, and is what detects the user's touch.

TOOLS:

- [Heat Gun](#) (1)
 - [Phillips #00 Screwdriver](#) (1)
 - [Tweezers](#) (1)
 - [iFixit Opening Tools](#) (1)
 - [Spudger](#) (1)
-

Step 1 — Back Cover Removal



- Pry the back cover off of the phone with your fingernail. There is a notch located at the bottom of the phone for improved leverage.

Step 2 — Battery Removal



- The battery is the large black rectangle towards the bottom half of the phone.
- There is a semi-circular notch at the bottom edge of the battery. Press against and up on the battery to pop it out.

Step 3 — Screw Removal



- Remove 9 screws from the phone. The locations of these screws are circled in the picture.
- 5.5mm length PH00 screws
- 4mm length PH00 screws

Step 4 — Bottom Cover Removal



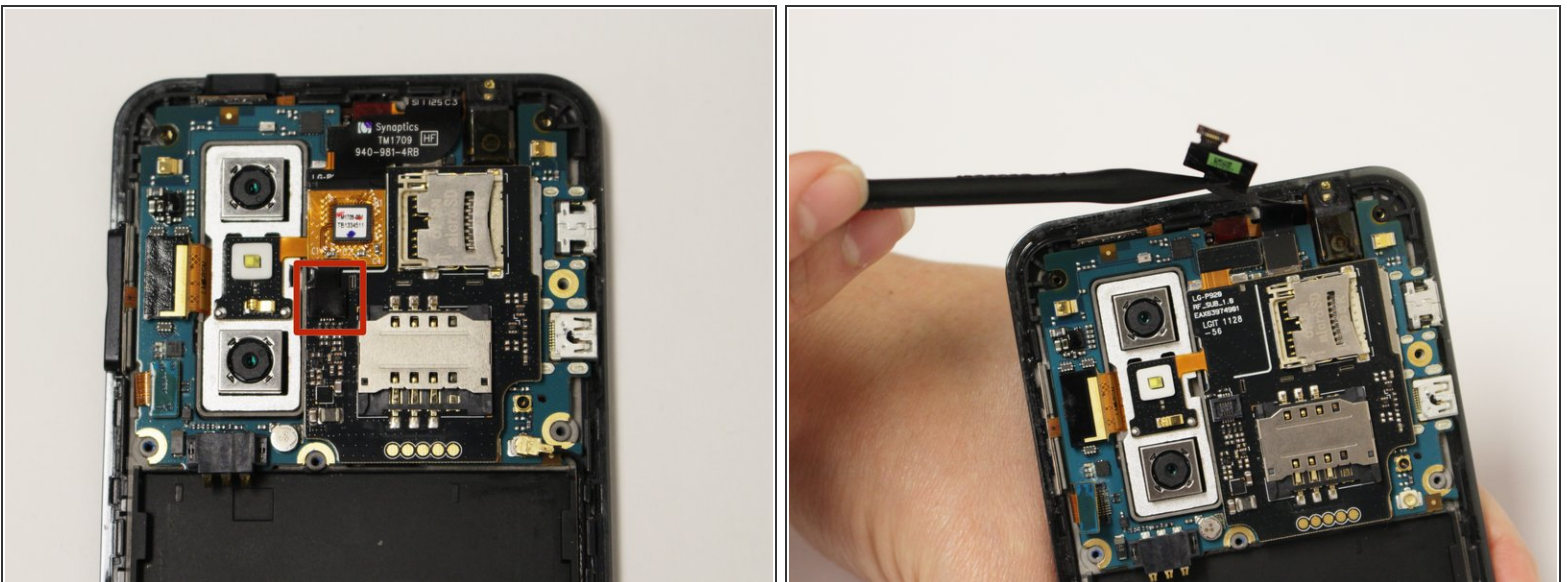
- Gently pull down on the bottom cover to remove it.

Step 5 — Mid-Cover Bezel Removal



- Using a plastic opening tool, gently pry around the perimeter of the device.
- ⚠ The ribbons behind the buttons and ports are very delicate. Make sure you do not run your plastic opening tool too deep into the bezel, as you could damage them.
- The button covers rest under the Mid-Cover Bezel. Remove them and set aside.

Step 6 — Ribbon Cable Disconnection



- Using a spudger or plastic opening tool, gently disconnect the ribbon cable attached to the black SIM card board.

Step 7 — Adhesive Loosening



- Use a hair-dryer on high, or a heat-gun on low to heat the device and loosen the adhesive which holds down the SD/SIM Card Board.
 - Evenly heat the device in short intervals for about one minute.
- ⚠ Do not heat the device for more than 30 seconds at a time to prevent over-heating.

Step 8 — SD/SIM Card Board Removal



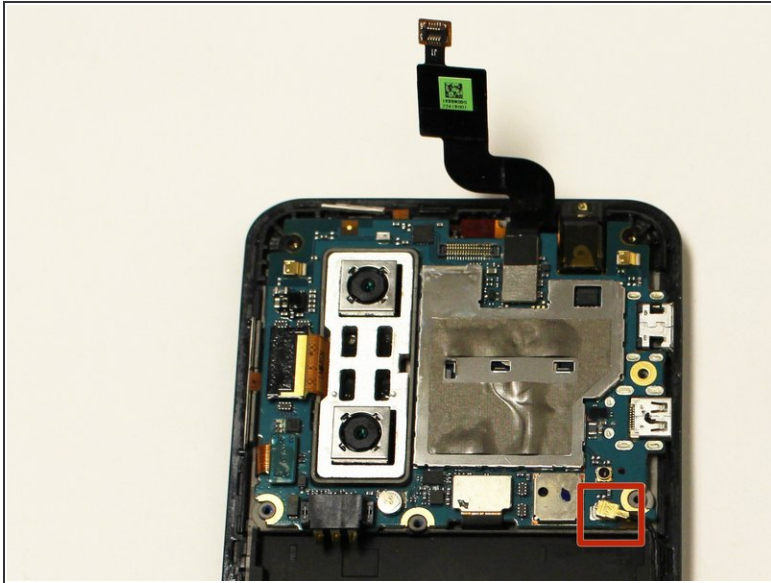
- Gently pry the board up to release it from the now soft adhesive. Make sure you pry up the little tab connected to the camera unit as well.
- If the board is too difficult to separate than more heating may be required.

Step 9 — Disconnect Ribbon Cables



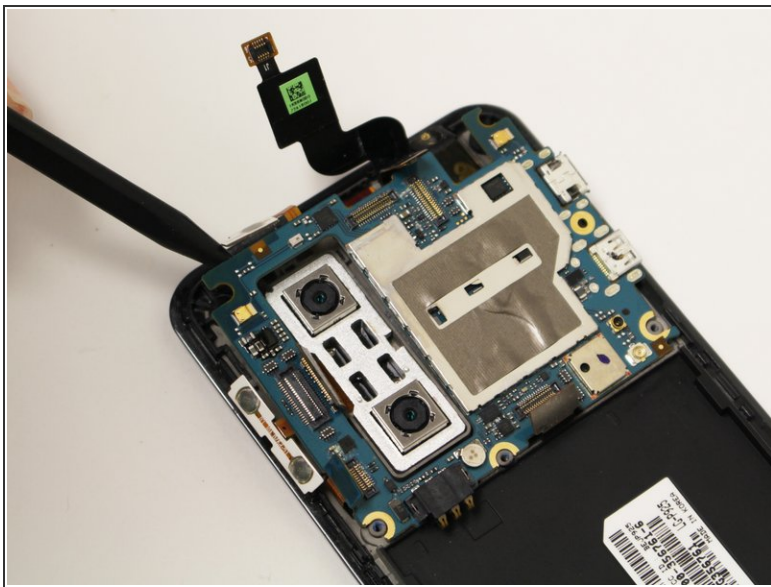
- Using a spudger or plastic opening tool, gently lift the ribbon cables connected to the motherboard.
- The button tabs, highlighted in orange, are held in with a light adhesive. Gently lift them out of the body of the phone with a spudger.

Step 10 — Disconnect Antenna



- Remove the antenna cable by disconnecting both ends.
- One end connects to the motherboard and the other connects near bottom of the phone.

Step 11 — Remove Motherboard



- Using a spudger gently lift the motherboard assembly out of the case.
- ⓘ Make sure the motherboard does not get snagged on the camera's ribbon cable.

Step 12 — Ribbon Cable Disconnection



- Using the plastic opening tool disconnect the ribbon cable connected to the headphone jack assembly.

Step 13 — Headphone Jack Removal



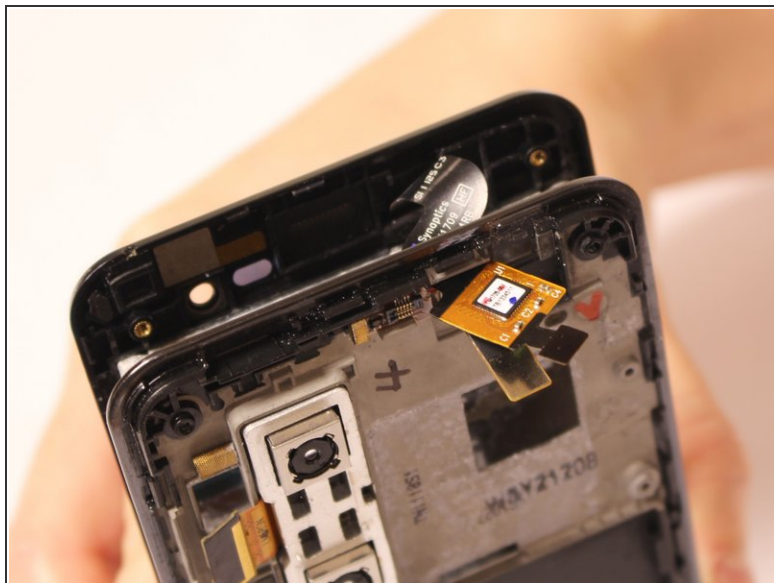
- Separate the Headphone Jack from the body of the phone. It should pop off relatively easily.

Step 14 — Front Bezel Removal



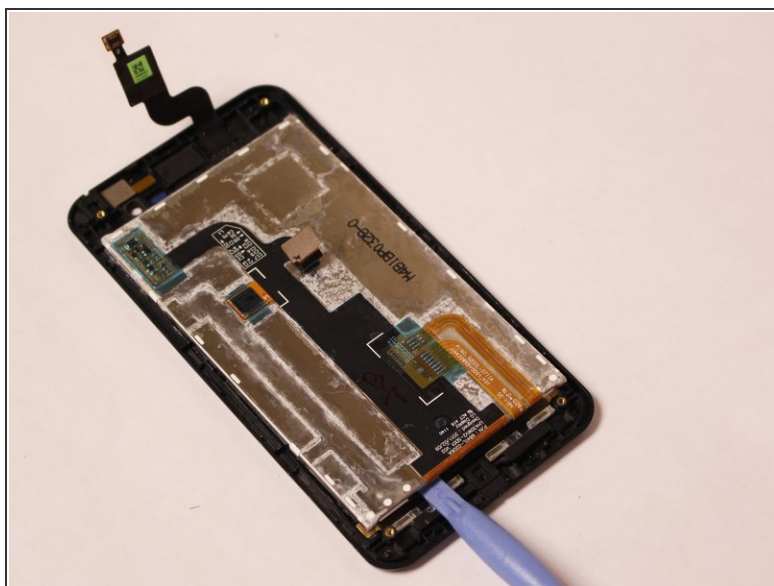
- Using a pry tool, carefully remove the front bezel of the phone.
- ⓘ There are many clips holding it together, so take your time and be patient.
- ⚠ Do not poke too far into the phone while prying, as you may damage the LCD from the side.

Step 15 — Pull Ribbon Cable End Through



- There is a ribbon cable coming from the front portion of the phone that fits through a slot in the back.
- Pull this ribbon cable through the slot to fully separate the halves.

Step 16 — LCD Removal

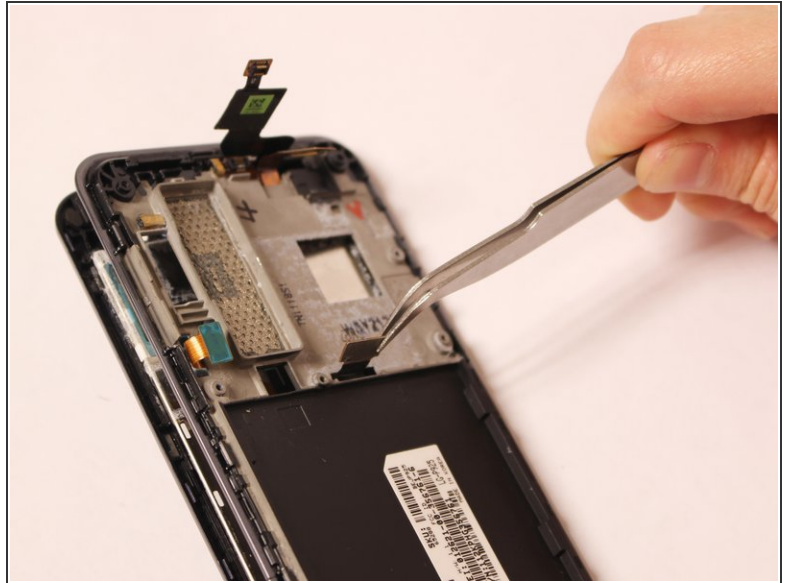


- Gently pry the LCD from the phone half.

⚠ Don't touch the front of the LCD panel or the back of the digitizer (the clear panel).

⚠ If the glass on your phone is broken, be careful to avoid getting cut by any shards that may fall apart.

Step 17 — Note on Reassembly



- ✦ When you are putting the front and back portions of the phone back together, make sure you don't forget to pull the LCD ribbon cable through the corresponding slot to connect back to the motherboard.

To reassemble your device, follow these instructions in reverse order.