



# LG Optimus Disassembly

This is how to disassemble a LG Optimus

Written By: Logan



---

## INTRODUCTION

This is how to disassemble a LG Optimus

---

### TOOLS:

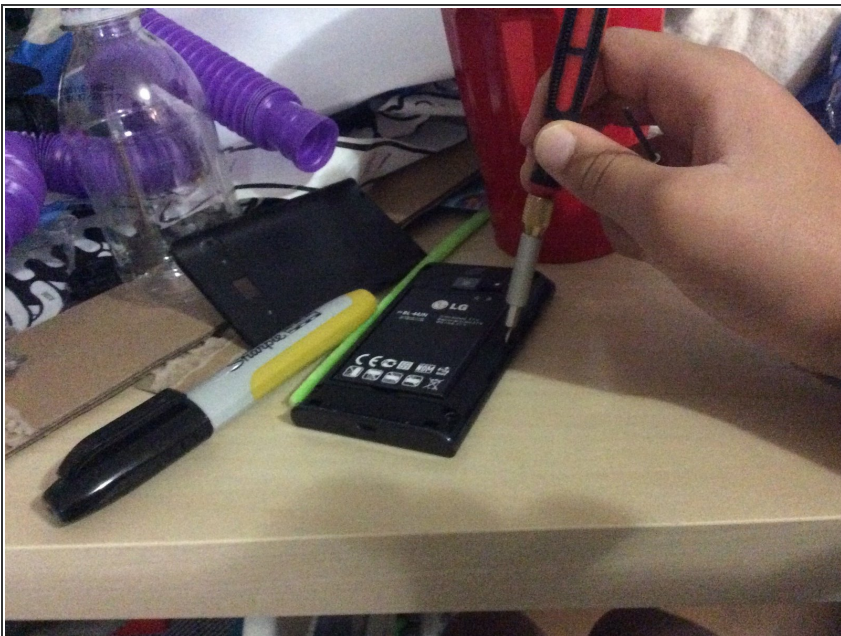
- [Essential Electronics Toolkit \(1\)](#)
-

## Step 1 — LG Optimus Disassembly



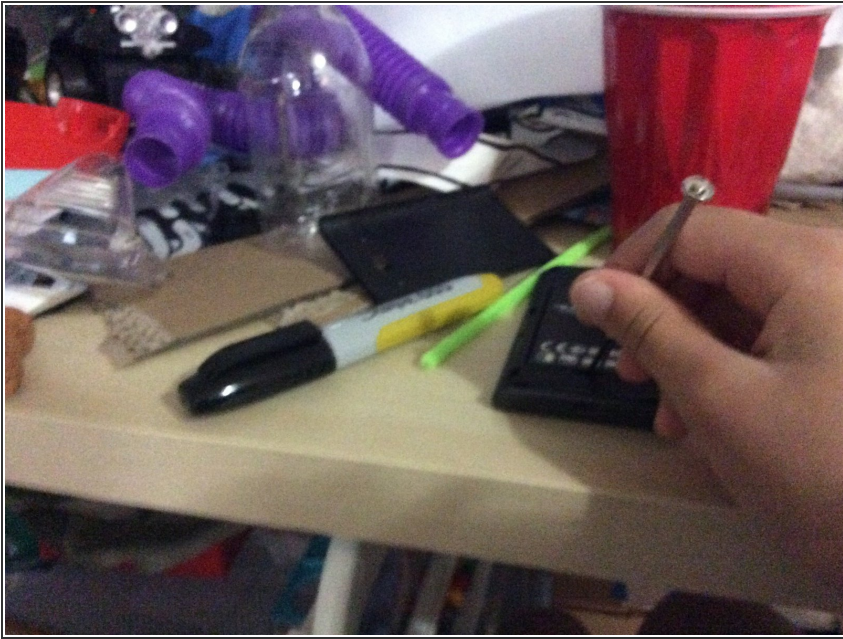
- Use your prying tool to open the battery compartment.

## Step 2



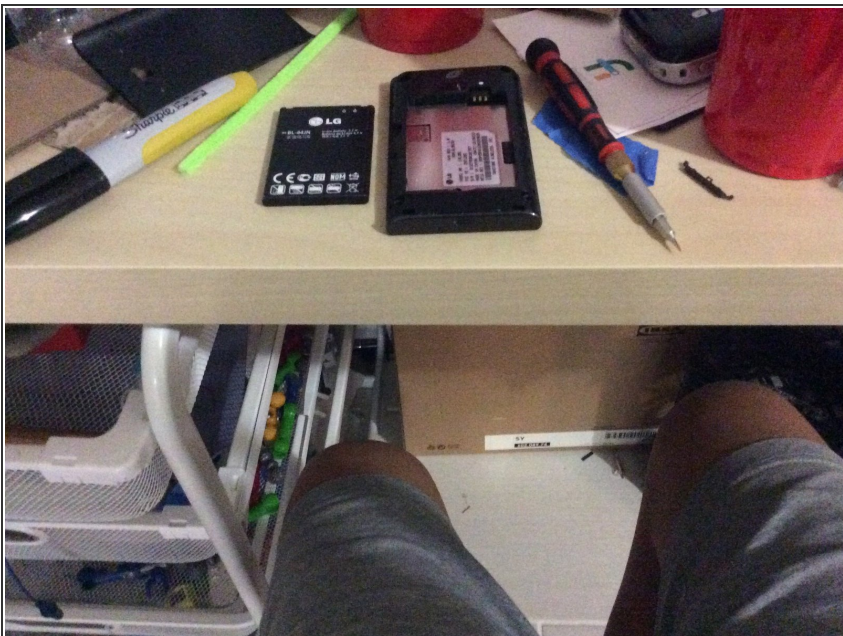
- Take out 6 screws.

### Step 3



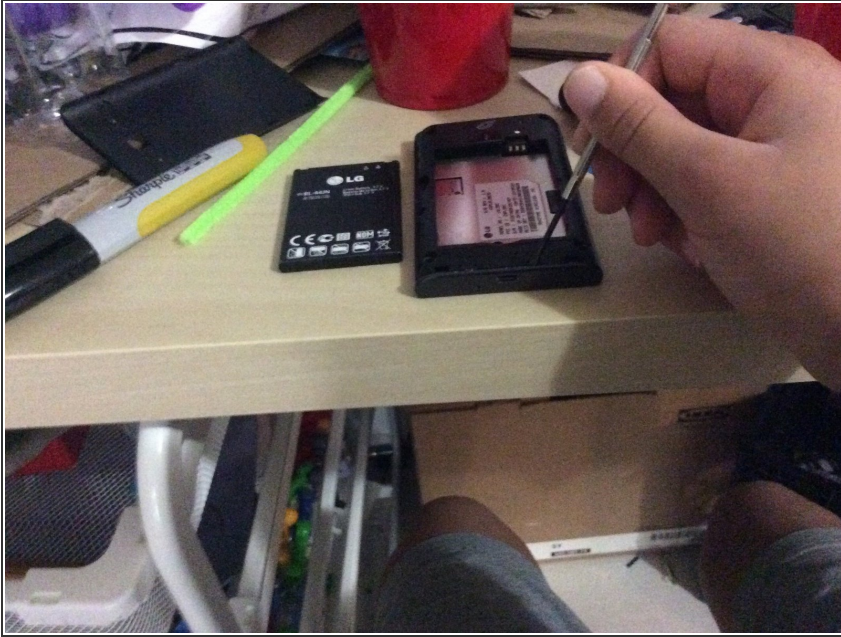
- Pry out the battery carefully.

### Step 4



- Put the battery somewhere safe away from sharp things and baby's.

## Step 5



- Pry the phone open.

## Step 6



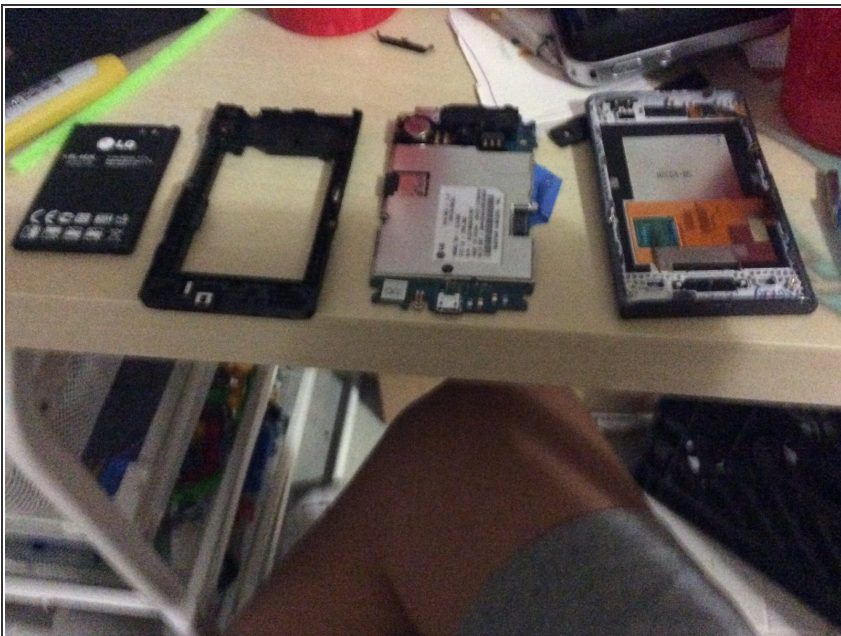
- Put the motherboard cover away from the battery.

## Step 7



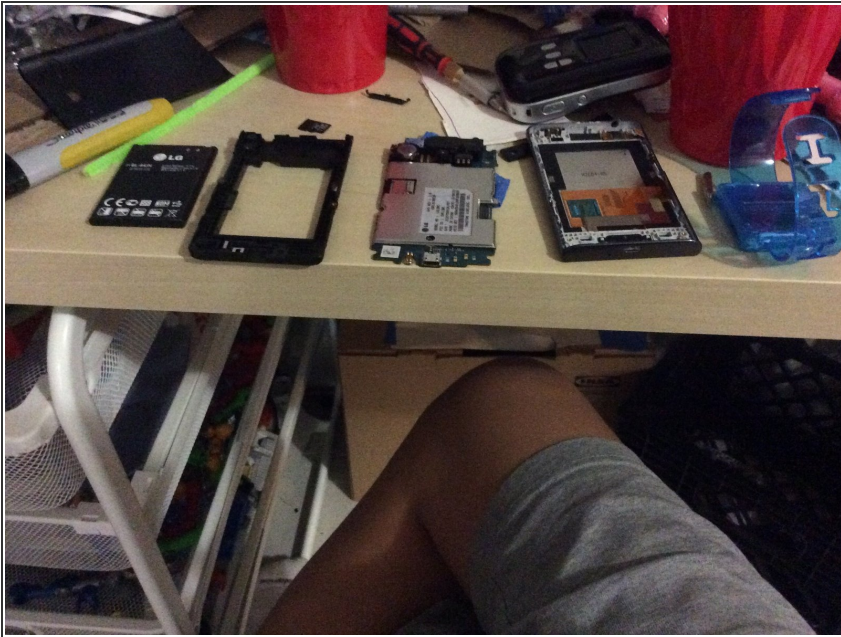
- Disconnect the 2 cables from the motherboard.

## Step 8



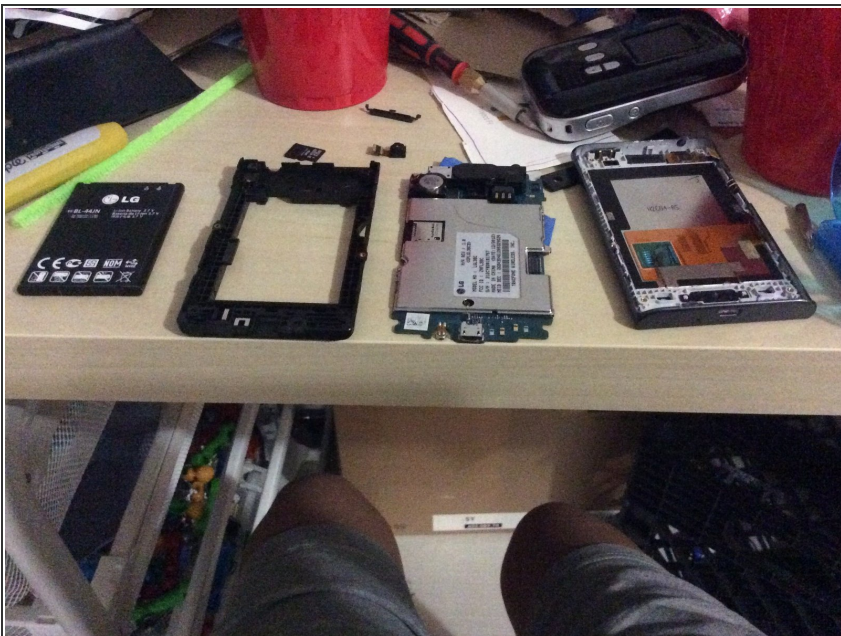
- Put the motherboard somewhere safe.

## Step 9



- Take out the SD card.

## Step 10



- Disconnect the rear facing camera then you are done.

To reassemble your device, follow these instructions in reverse order.