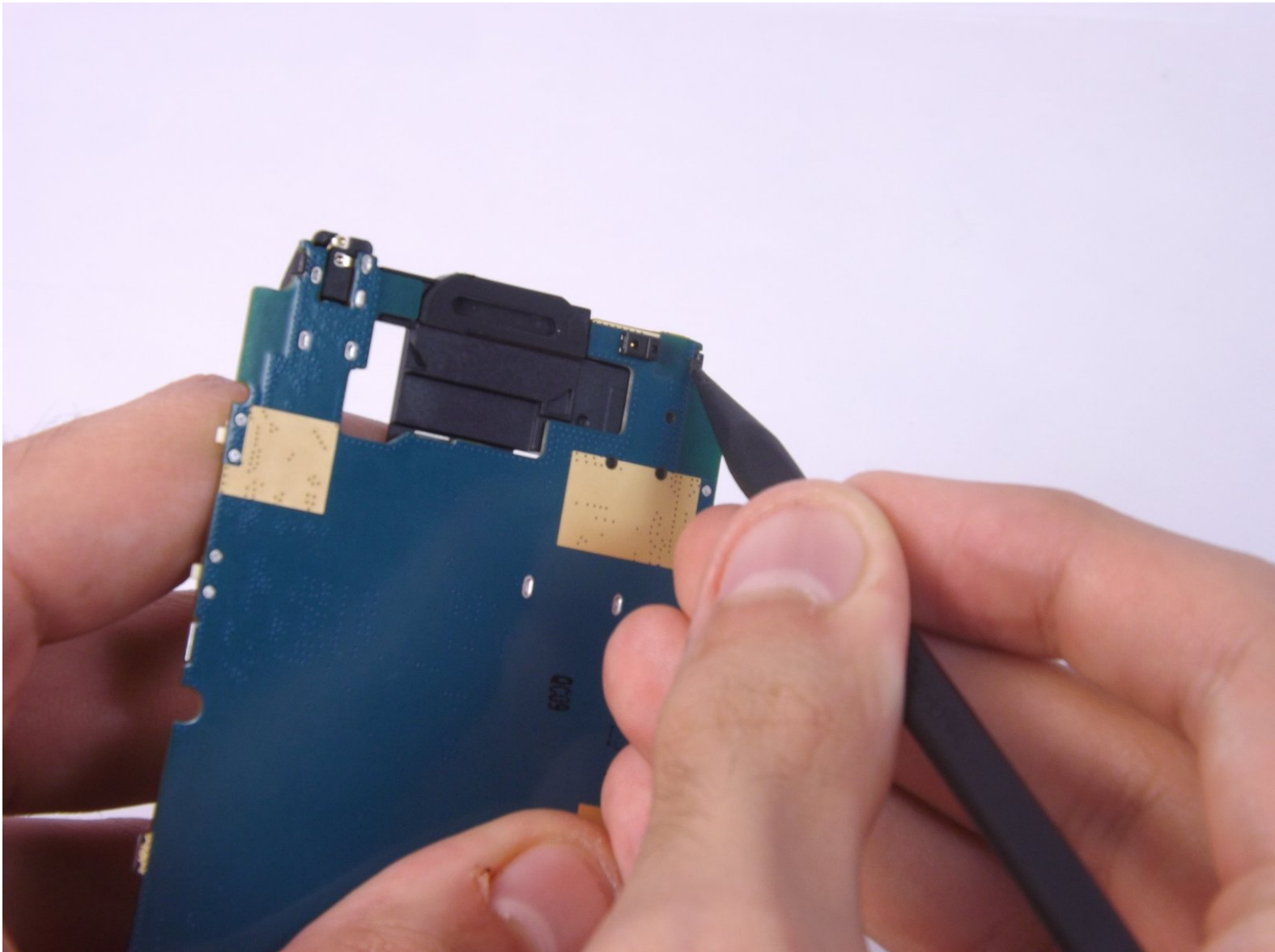




LG Optimus Dynamic II L39C Camera Replacement

Replace a damaged camera.

Written By: Stephanie Reyes



INTRODUCTION

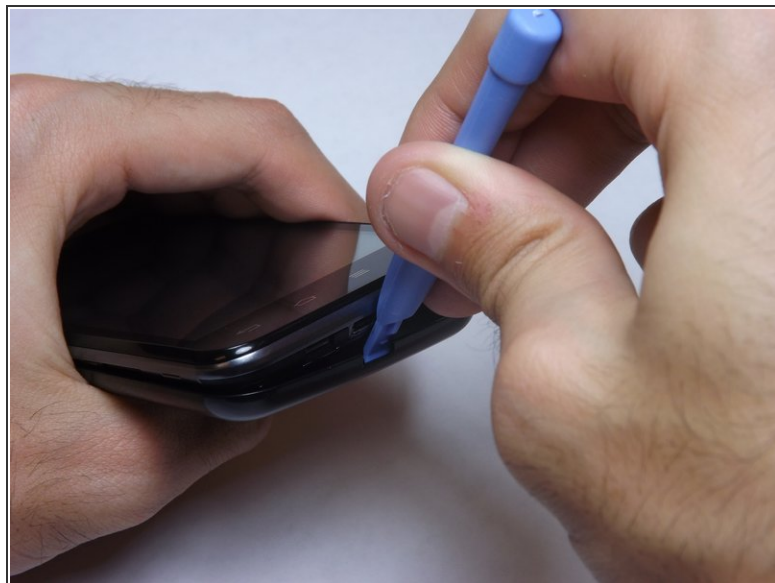
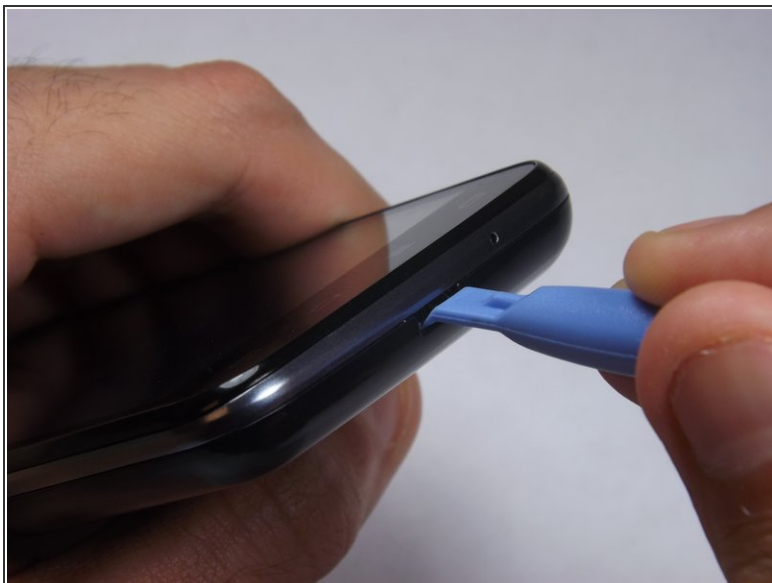
For changing a broken camera.




TOOLS:

- [Phillips #000 Screwdriver](#) (1)
 - [iFixit Opening Tools](#) (1)
 - [Spudger](#) (1)
-

Step 1 — Remove the back case



 Make sure not to push the tool into the USB port. Doing so may cause damage to your phone.

- Hold the blue plastic opening tool at the edge of the USB opening. Push down and pry the case off the phone gently.

Step 2 — Remove the Battery



- Lift the battery out of the phone and replace with your new one.

Step 3 — Remove the SD Card



- Grab the end of the SD Card and pull it out of the phone.

Step 4 — Remove the screws from the midframe



- Use the PH #000 screwdriver to remove the six screws from the midframe

Step 5 — Remove the midframe



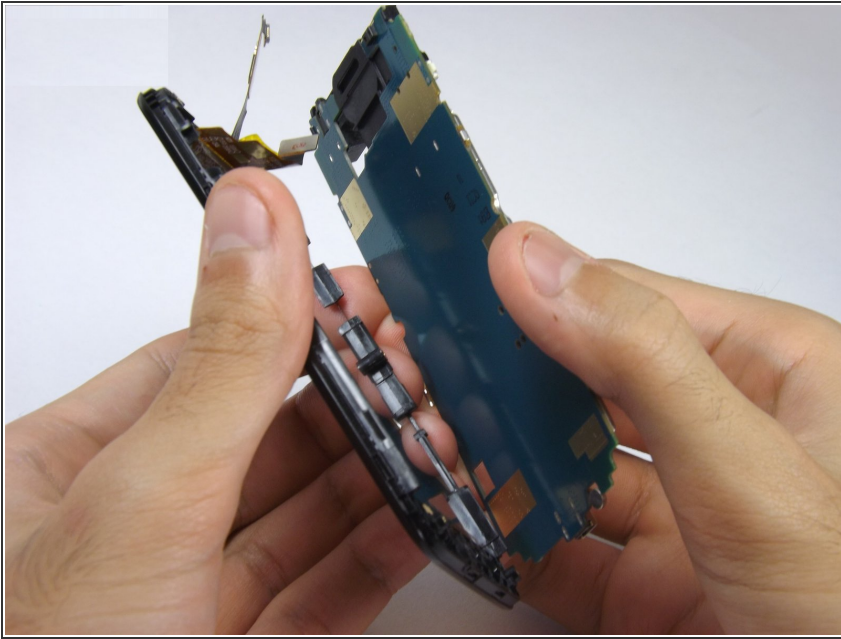
- Using the plastic opening tool, work gently to go around the perimeter of the phone and remove the midframe.

Step 6 — Disconnect the screen from the motherboard



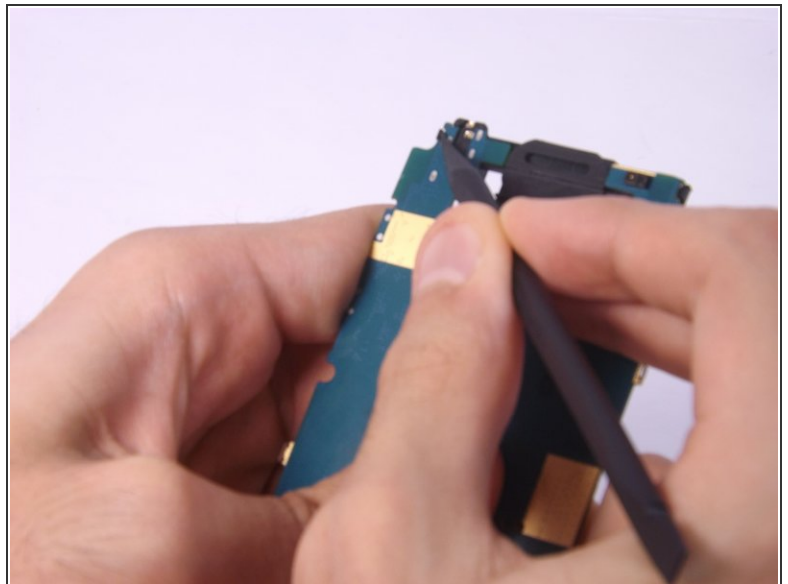
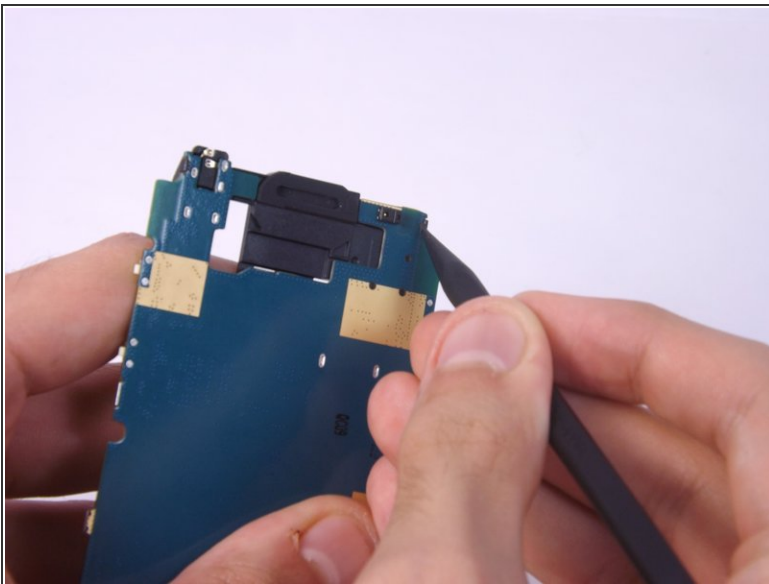
- Use the plastic opening tool to disconnect the small orange tab from the motherboard.
- Next disconnect the silver tab slightly above where the orange tab was.

Step 7 — Separate the screen and motherboard



- Gently feed the orange and silver tabbed ribbons through the hole in the motherboard and the screen will be free.

Step 8 — Detach tabs to separate the camera



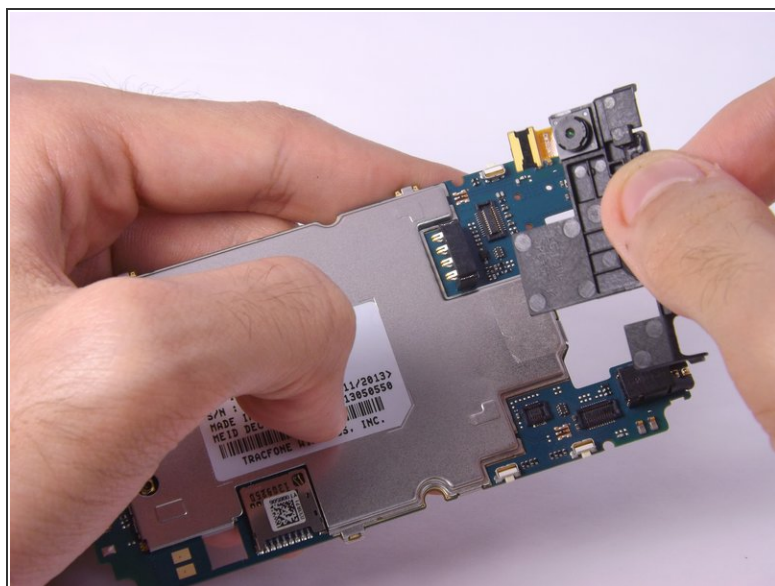
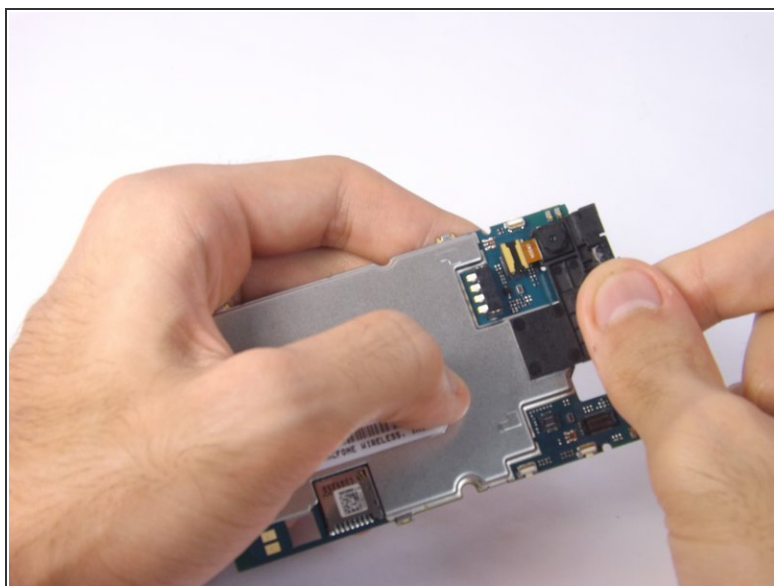
- Using the spudger, push the black tabs on the sides of the motherboard off carefully.
 - ⓘ They should snap off easily.

Step 9 — Separate orange tab



- Turn the phone over and pull up the orange tab connected to the camera.

Step 10 — Separate the camera from the motherboard



- You should be able to remove the camera easily with your fingers.

To reassemble your device, follow these instructions in reverse order.